

Student

Leopold Street

Loughborough

4 Bed Terraced House • LE11 5DW • £110 pppw • £400 Deposit Per Person





Leopold Street, Loughborough

STUDENT property. FOUR double bedrooms. Located in the GOLDEN TRIANGLE, Fully FURNISHED. Side access to low maintenance rear garden. Clean and Smart. Double glazed and centrally heated. Just along from the PAGET ARMS. BILLS INCLUDED. 2024 - 2025 Academic year.

Lounge

The hub of the home including furniture and television. Access to the Kitchen keeps the home social.

Kitchen

A practical and fully equipped galley Kitchen. Includes all the appliances you'll need.

Four Bedrooms

All the bedrooms in this house are good sized double rooms fully furnished. The rooms are all decorated neutrally and are double glazed and centrally heated.

Shower Room

Located on the first floor, this modern refitted three piece suite includes shower and is fully tiled.

Garden

A simple moderately sized garden to the rear.

Parking

On street parking available with permit.

Utilities

Bills Included.

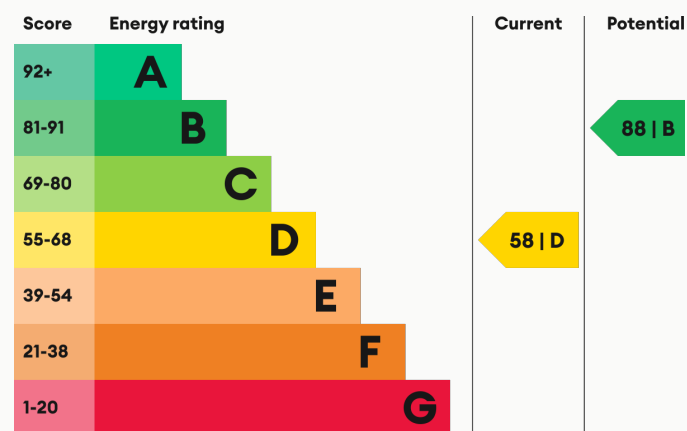
Heating

Gas-fired central heating.

Glazing

Modern, good quality, uPVC double glazing.

Energy Performance



We aim to make our particulars both accurate and reliable. However they are not guaranteed; nor do they form part of an offer or contract. If you require clarification on any points then please contact us, especially if you are traveling some distance to view. All measurements are to widest point.



Lounge



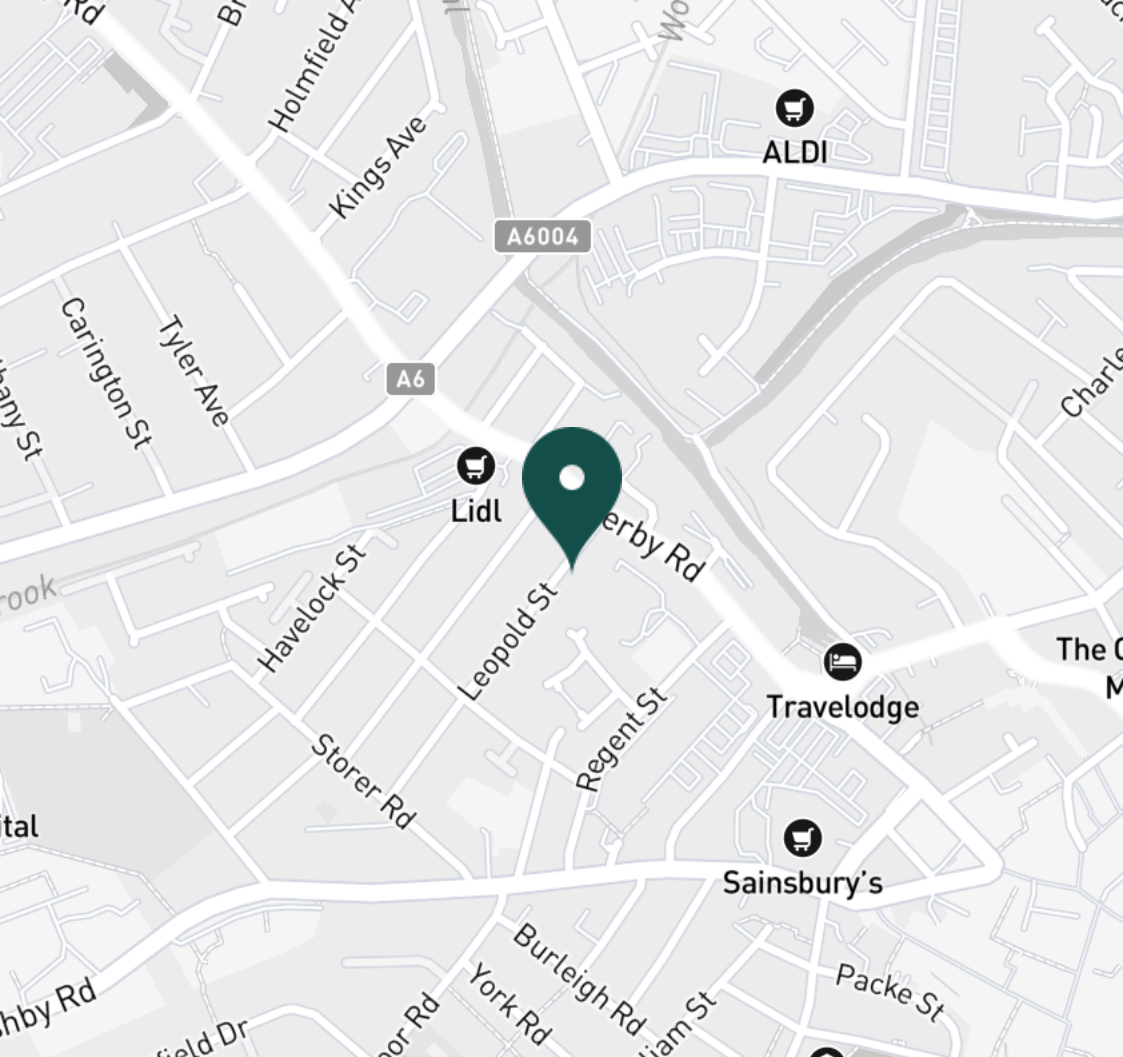
Kitchen



Kitchen



Kitchen



SUPERMARKETS

Lidl Loughborough	0.2 mi
Tesco Superstore Loughborough	0.3 mi
Sainsburys Loughborough	0.5 mi
Aldi Loughborough	0.6 mi
Marks & Spencer	0.7 mi

GYMS

Anytime Fitness Loughborough	0.3 mi
PureGym Loughborough	0.4 mi
Dynamite Gym Ltd	0.6 mi
CrossFit Loughborough	0.7 mi
Loughborough University Pool	0.9 mi

TRAIN STATIONS

Loughborough	1.1 mi
Barrow upon Soar	4.3 mi
Sileby	6.1 mi
East Midlands Parkway	9.6 mi
Syston	11.0 mi

NURSERY SCHOOLS

Busy Bees in Loughborough	0.2 mi
Kingscliffe Day Nursery	0.4 mi
Babblebrooke Day Nursery	0.4 mi
Small World Nursery	0.6 mi
Cobden Childrens Centre	0.8 mi

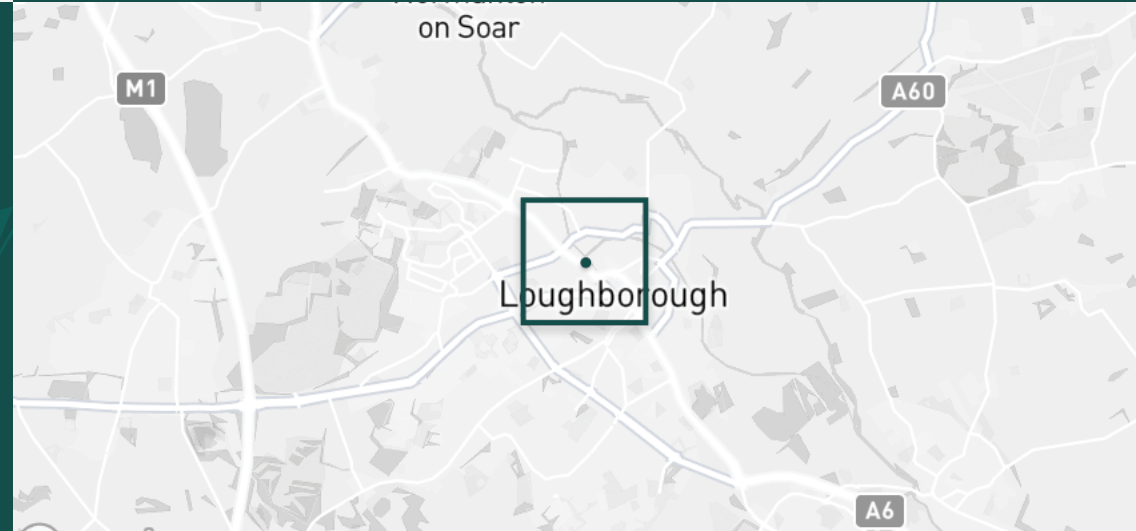
PRIMARY SCHOOLS

St Marys Catholic PS	0.4 mi
Loughborough CE PS	0.7 mi
Rendell Primary School	0.7 mi
Cobden PS	0.9 mi
Robert Bakewell PS	1.0 mi

HIGH SCHOOLS

Limehurst Academy	0.5 mi
RNIB College Loughborough	0.6 mi
Loughborough College	1.0 mi
Lboro Uni School Of The Arts	1.0 mi
The Garendon High Sch	1.3 mi

Discover
Loughborough

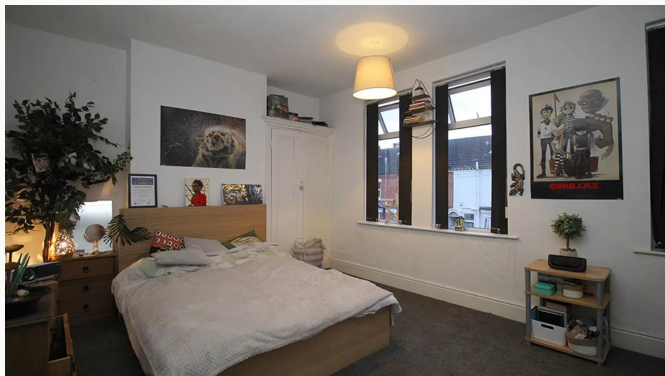


- ✓ Four Double Bedrooms
- ✓ Fully Furnished
- ✓ Golden Triangle Location
- ✓ Bills Included
- ✓ Spacious Accomodation
- ✓ Student Property





Bedroom



Bedroom



Bedroom



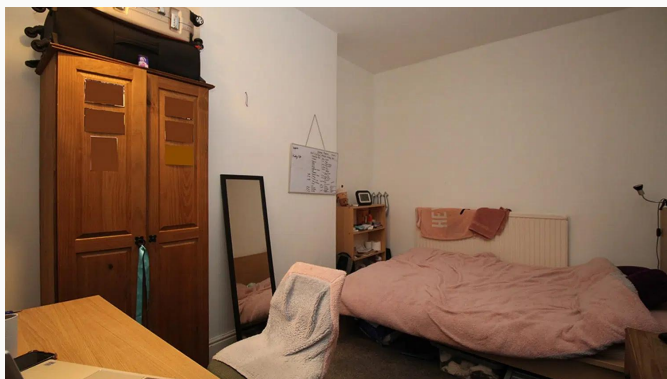
Bedroom



Bedroom



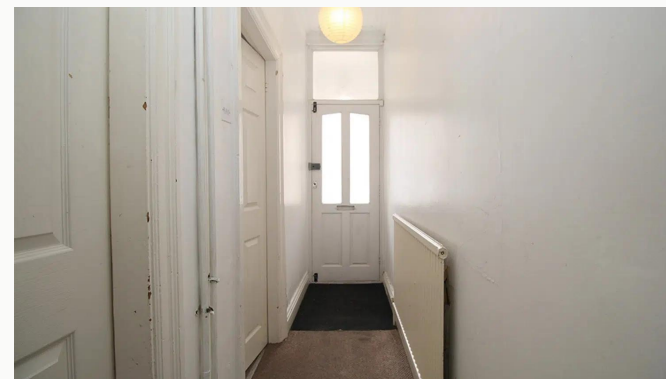
Bedroom



Bedroom



Shower Room



Hallway



Garden



Garden

Available
From 07/07/2024

Comes
Furnished

Bedrooms
4

Receptions
1

Bathrooms
1

Parking
With permit

Postcode
LE11 5DW

Rent
£110 pppw

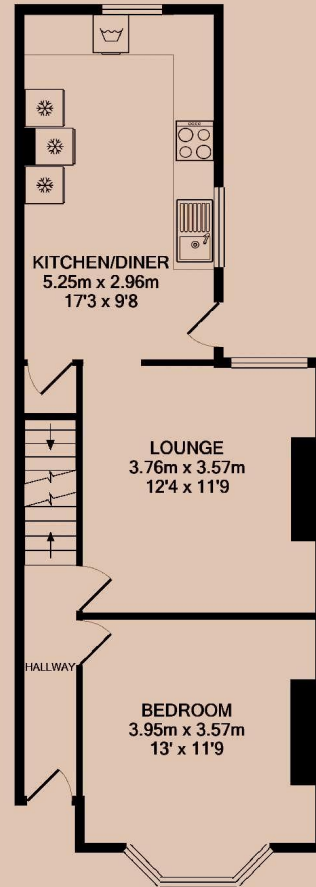
Deposit
£1,600

EPC
58 | D

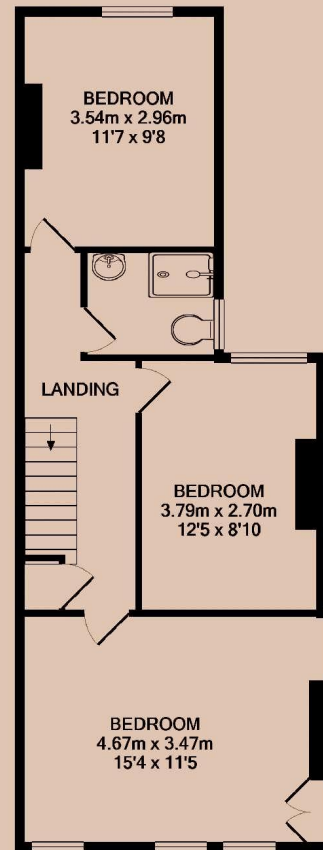
Council Tax Band
B

ID
#7450

Updated
25/04/2024



GROUND FLOOR



1ST FLOOR

Have a property like this? Let's work together.

Design and marketing are at the heart of our approach. With most people now looking for property online, we can get our clients' properties in front of as many people as the most prominent national agents. Where we differ is in the quality of our work. We create stunning digital particulars that highlight the individual attributes of every property we market, with videos and floor plans as standard.



OUR OFFICE
7 Biggin Street
Loughborough, LE11 1UA

CONTACT US
01509 320 320
let@huntleys.net



Huntleys

