

Student

Cotswold Close

Loughborough

6 Bed Detached House • LE11 3AN • £142 pppw • £200 Deposit Per Person



Cotswold Close, Loughborough

50% OFF RENT FOR JULY! Contemporary 6 double bedroom student property directly opposite the university campus and just a short walk to the town. The property has a gorgeous kitchen and living area complete with breakfast bar. Furnished and decorated through out to a great specification. **BILLS INCLUDED.** Other perks include 200Mbps Broadband; a great enclosed rear garden; double glazing; gas central heating and driveway parking. 2026 - 2027 Academic Year.

Lounge 3.7m (12'2) x 2.5m (8'2)

Spacious lounge with oversized sofas, flat screen TV and patio doors overlooking the rear garden. The open plan layout to the kitchen and Breakfast bar makes this a great social space.

Kitchen 7.5m (24'7) x 3m (9'10)

Stunning gloss white kitchen complete with American style fridge freezer and breakfast bar overlooking the lounge / TV area. All the kitchen appliances you need are included.

Bedroom One 5.2m (17'1) x 3.6m (11'10)

Located on the ground floor at the front of the house this room benefits from a large bay window. The room comes with all the furnishings shown in the photos. (Red)

Bedroom Two 3.8m (12'6) x 3m (9'10)

Centrally located on the ground floor this room comes furnished with everything shown in the photos. (Blue)

Bedroom Three 3.6m (11'10) x 2.3m (7'7)

With its own front door and en suite this room is ideal for those wanting a quieter space. (Turquoise)

En suite 1.6m (5'3) x 1.2m (3'11)

Contemporary shower room with toilet and wash hand basin.

Bedroom Four 3.8m (12'6) x 3m (9'10)

Fully furnished with fitted wardrobes and wood effect laminate flooring this room feels light and airy. (Cream)

Bedroom Five 4.4m (14'5) x 3.6m (11'10)

Again complete with everything you see this room has a great shape. (Purple)

Bedroom Six 3.2m (10'6) x 3.1m (10'2)

A comfortable sized double bedroom complete with all the furnishings shown and fitted wardrobe.

Bathroom 2.5m (8'2) x 2.4m (7'10)

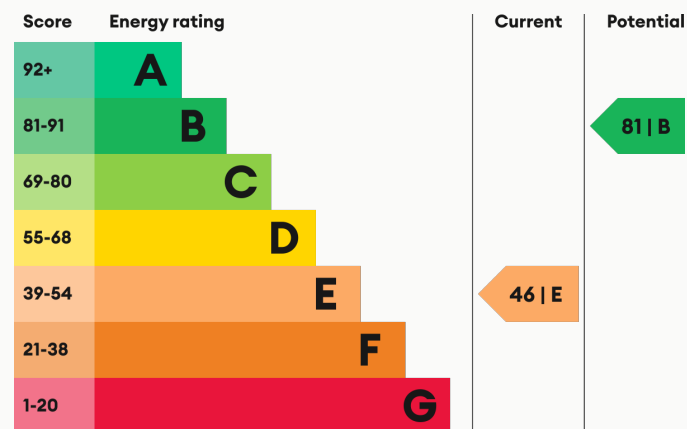
Contemporary three piece bathroom suite complete with electric shower over the bath and heated towel rail.

Garden

Private and low maintenance rear garden with raised patio, decking and a lockable shed. Great for BBQs in the summer.

For more information about this property, visit our website huntleys.net.

Energy Performance



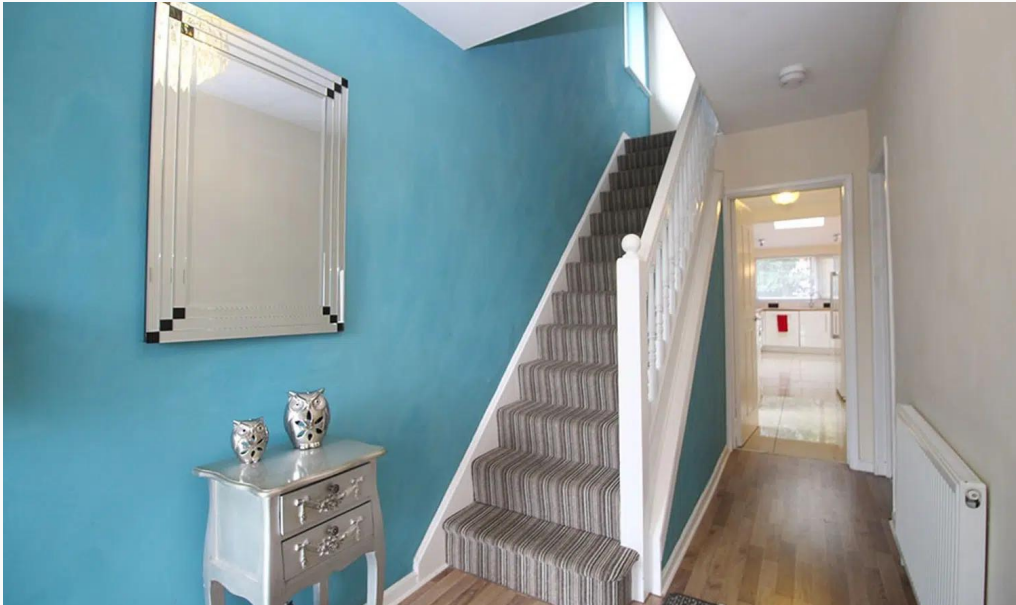
We aim to make our particulars both accurate and reliable. However they are not guaranteed; nor do they form part of an offer or contract. If you require clarification on any points then please contact us, especially if you are traveling some distance to view. All measurements are to widest point.



Lounge and Kitchen



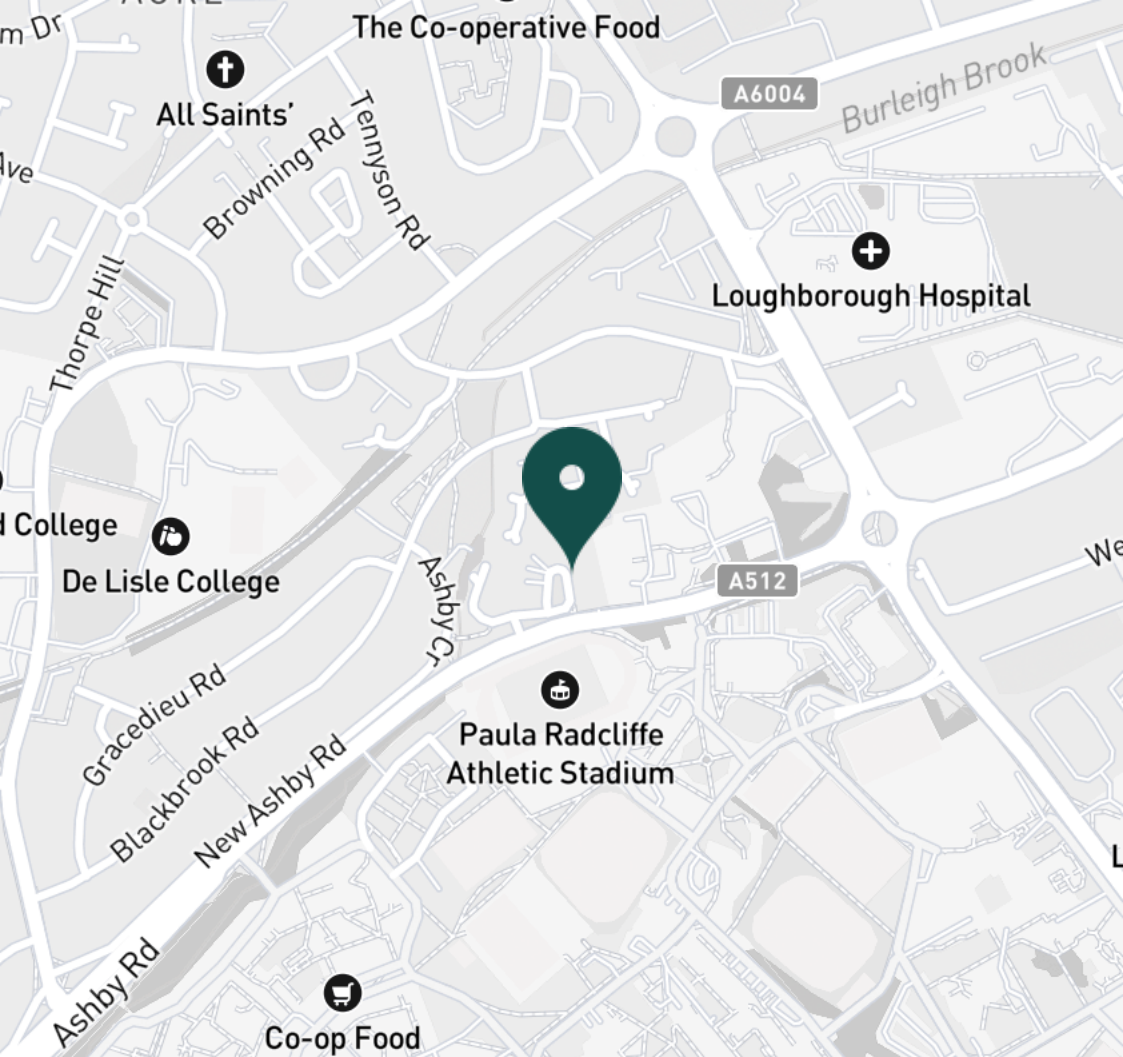
Kitchen



Entrance hall



Downstairs toilet



SUPERMARKETS

Co-op Food Knightthorpe Rd	0.8 mi
Lidl Loughborough	1.0 mi
Sainsburys Loughborough	1.1 mi
Tesco Superstore Loughborough	1.2 mi
Marks & Spencer	1.2 mi

GYMS

Loughborough University Pool	0.6 mi
Loughborough Sport	0.7 mi
Radmoor Centre	0.7 mi
Anytime Fitness Loughborough	1.1 mi
Holywell Fitness Centre	1.1 mi

TRAIN STATIONS

Loughborough	2.0 mi
Barrow upon Soar	4.6 mi
Sileby	6.4 mi
East Midlands Parkway	10.9 mi
Syston	11.3 mi

NURSERY SCHOOLS

Little House Day Nursery	0.5 mi
Kingscliffe Day Nursery	0.7 mi
Loughborough Campus Nursery	0.7 mi
Busy Bees in Loughborough	0.8 mi
Charnwood College Playgroup	1.0 mi

PRIMARY SCHOOLS

Booth Wood PS	0.7 mi
Ashmount Sch	0.8 mi
St Marys Catholic PS	0.8 mi
Thorpe Acre Junior Sch	1.1 mi
Mountfields Lodge Sch	1.1 mi

HIGH SCHOOLS

Loughborough College	0.7 mi
Lboro Uni School Of The Arts	0.7 mi
Ashmount Sch	0.8 mi
De Lisle Catholic Science C	0.8 mi
The Garendon High Sch	0.9 mi

Discover
Loughborough



- ✓ Bills included
- ✓ Right by the University
- ✓ 200Mbps Broadband
- ✓ 6 Double Bedrooms
- ✓ Fully Furnished
- ✓ Great Living area





Bedroom



Bedroom



Bedroom



Bedroom



Bathroom



Bathroom



Bedroom



Bedroom



Bedroom



Landing



Bedroom



Bedroom



Bedroom



En suite

Available
From 01/07/2026

Comes
Furnished

Bedrooms
6

Receptions
1

Bathrooms
2

Parking
Driveway

Postcode
LE11 3AN

Rent
£142 pppw

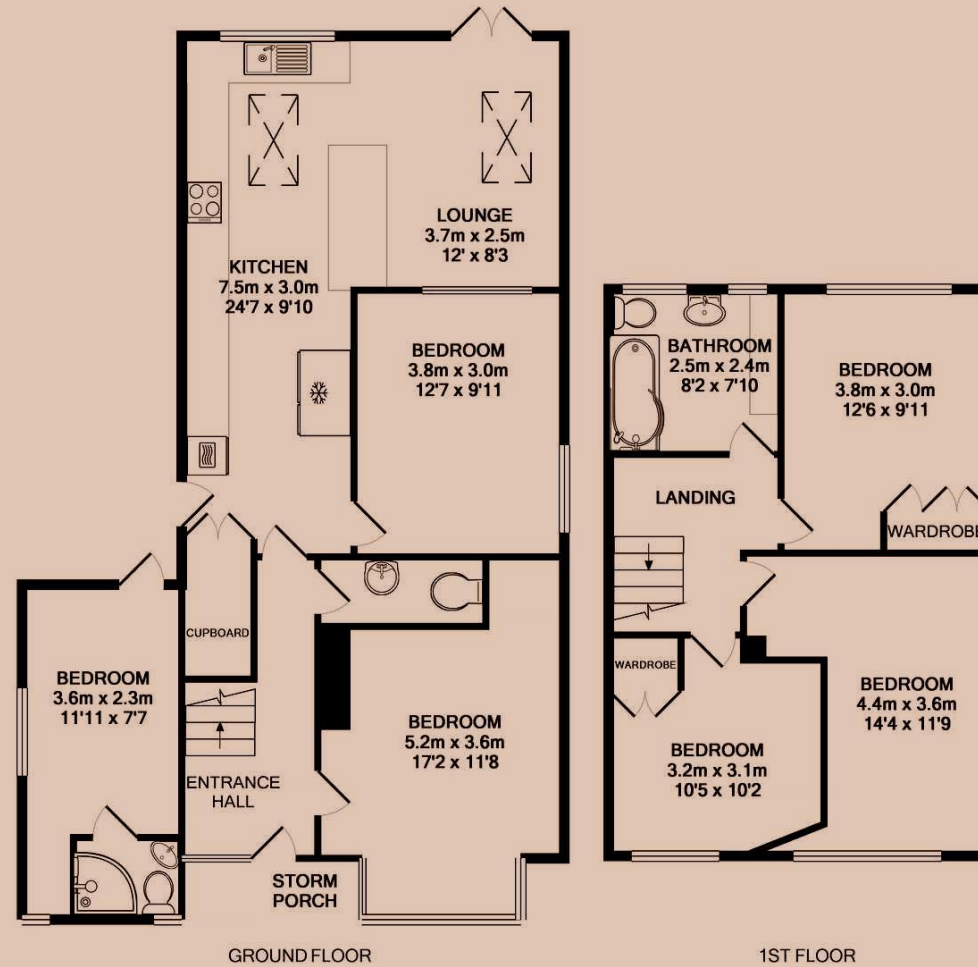
Deposit
£1,200

EPC
46 | E

Council Tax Band
D

ID
#472

Updated
12/05/2026



Have a property like this? Let's work together.

Design and marketing are at the heart of our approach. With most people now looking for property online, we can get our clients' properties in front of as many people as the most prominent national agents. Where we differ is in the quality of our work. We create stunning digital particulars that highlight the individual attributes of every property we market, with videos and floor plans as standard.



OUR OFFICE
7 Biggin Street
Loughborough, LE11 1UA

CONTACT US
01509 320 320
let@huntleys.net



Huntleys

