

A photograph of a living room interior. The room has white walls and light-colored wooden flooring. In the center, there is a white fireplace with a dark opening. To the left, a round wooden table is partially visible, with a wooden chair featuring a spindle back and a patterned seat cushion in front of it. To the right of the fireplace, two wooden chairs with vertical slat backs and white seat cushions are positioned. A white cylindrical pendant light hangs from the ceiling. In the background, there are two white doors. A dark coffee table is partially visible in the foreground.

Old Ashby Road

Loughborough

1 Bed 1st Floor Apartment • LE11 4PG • £890 pcm • £1,020 Deposit



Old Ashby Road, Loughborough

Now available to let in Loughborough. A first-floor, furnished, one-bedroom apartment. This apartment comes with a double bedroom, sizeable lounge, modern kitchen, and bathroom. To the front of the property is a garden. Furniture and appliances pictured included.

Lounge

A sizeable lounge, large enough to also be used as a diner. This living area comes with the furniture pictured. Fireplace is for decoration only.

Kitchen

A modern L-shaped kitchen, including a washing machine, fridge/freezer, oven and hob.

Bedroom

A double bedroom including furniture pictured.

Bathroom

A modern bathroom, including a bath, sink, toilet and shower above the bath.

Garden

Situated to the front of the property, a garden of mostly lawn area. Path is shared access for the ground floor apartment.

Parking

On street parking available on nearby roads.

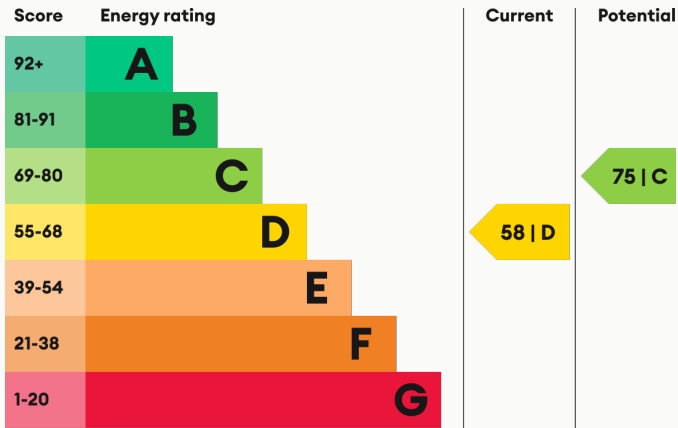
Heating

Gas-fired central heating.

Glazing

Modern, good quality, uPVC double glazing.

Energy Performance



We aim to make our particulars both accurate and reliable. However they are not guaranteed; nor do they form part of an offer or contract. If you require clarification on any points then please contact us, especially if you are traveling some distance to view. All measurements are to widest point.



Lounge



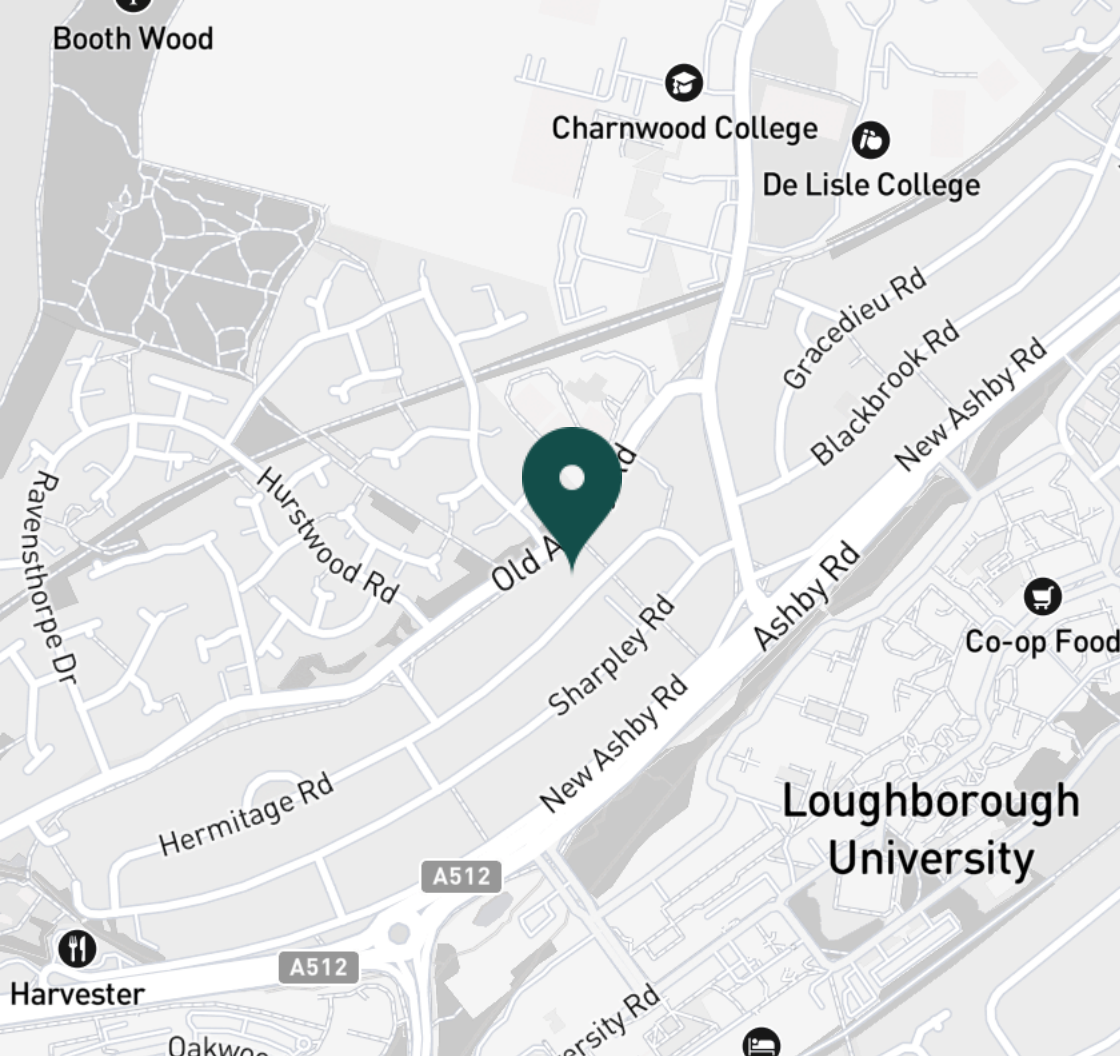
Lounge



Kitchen



Kitchen



SUPERMARKETS

Co-op Food Knightthorpe Rd	0.9 mi
Morrisons Loughborough	1.5 mi
Lidl Loughborough	1.6 mi
Sainsburys Loughborough	1.7 mi
Aldi Loughborough	1.8 mi

GYMS

Holywell Fitness Centre	0.9 mi
Burleigh Springs Leisure Club	1.0 mi
Loughborough University Pool	1.2 mi
Loughborough Sport	1.3 mi
Radmoor Centre	1.3 mi

TRAIN STATIONS

Loughborough	2.6 mi
Barrow upon Soar	5.1 mi
Sileby	7.0 mi
East Midlands Parkway	10.3 mi
Syston	11.3 mi

NURSERY SCHOOLS

Charnwood College Playgroup	0.5 mi
Little House Day Nursery	0.9 mi
Kingscliffe Day Nursery	1.3 mi
Loughborough Campus Nursery	1.4 mi
Busy Bees in Loughborough	1.4 mi

PRIMARY SCHOOLS

Booth Wood PS	0.2 mi
Ashmount Sch	0.3 mi
Thorpe Acre Junior Sch	0.6 mi
St Marys Catholic PS	1.5 mi
Stonebow County PS	1.5 mi

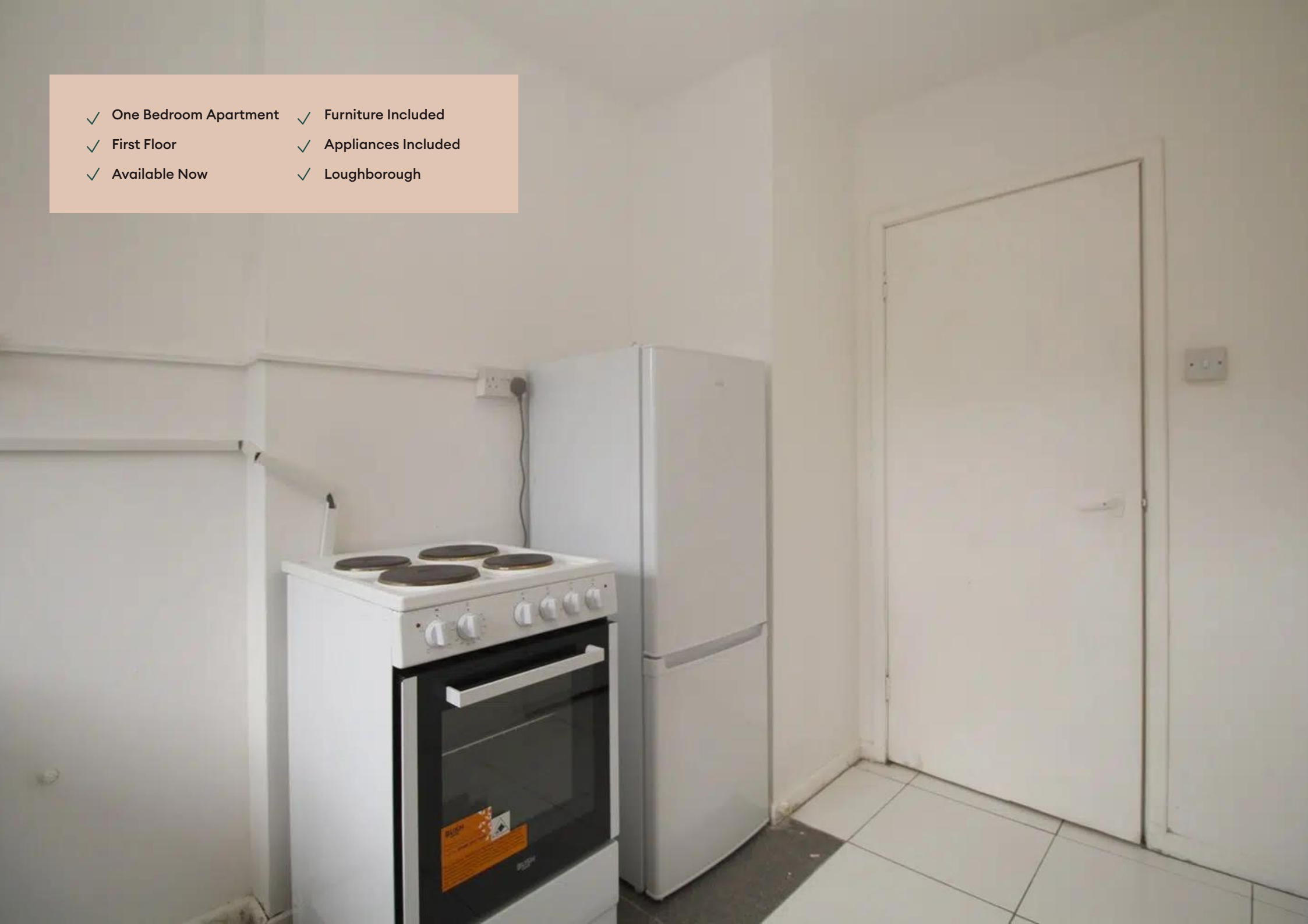
HIGH SCHOOLS

Ashmount Sch	0.3 mi
De Lisle Catholic Science C	0.4 mi
The Garendon High Sch	0.4 mi
Charnwood College	0.5 mi
Loughborough College	1.3 mi

Discover
Loughborough



- ✓ One Bedroom Apartment
- ✓ Furniture Included
- ✓ First Floor
- ✓ Appliances Included
- ✓ Available Now
- ✓ Loughborough





Kitchen



Bedroom



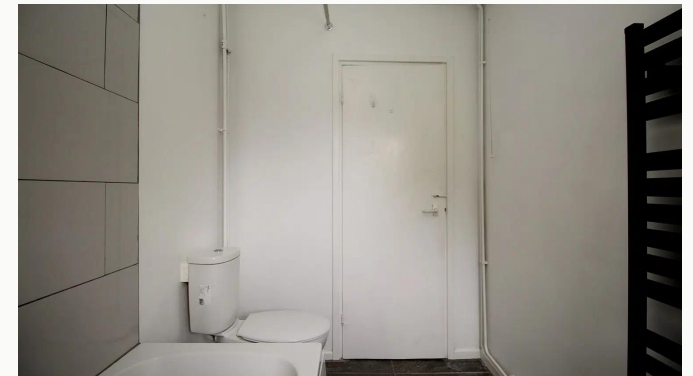
Bedroom



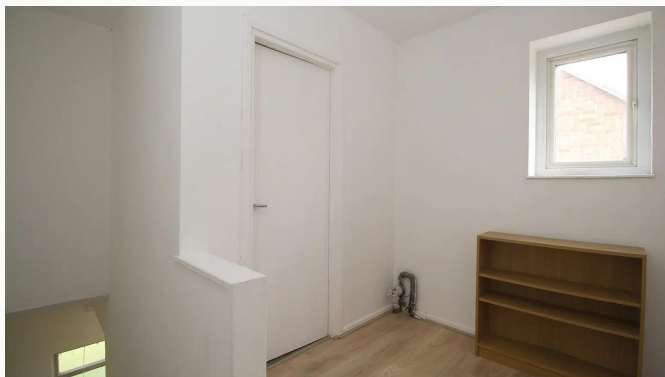
Bedroom



Bathroom



Bathroom



Landing



Landing



Entrance



Garden



Garden

Available
From 30/07/2025

Comes
Furnished

Bedrooms
1

Receptions
1

Bathrooms
1

Parking
On Street

Postcode
LE11 4PG

Rent
£890 pcm

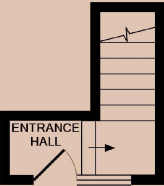
Deposit
£1,020

EPC
58 | D

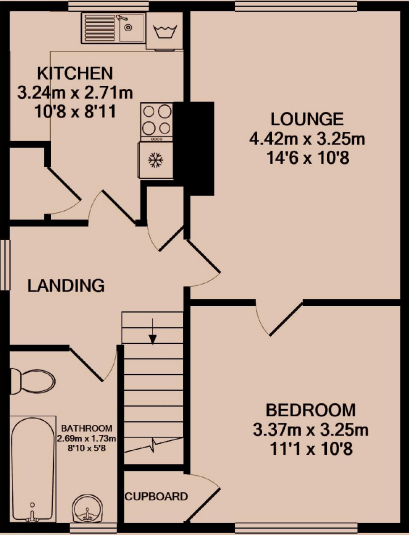
Council Tax Band
A

ID
#17399

Updated
30/07/2025



ENTRANCE FLOOR



GROUND FLOOR

Have a property like this? Let's work together.

Design and marketing are at the heart of our approach. With most people now looking for property online, we can get our clients' properties in front of as many people as the most prominent national agents. Where we differ is in the quality of our work. We create stunning digital particulars that highlight the individual attributes of every property we market, with videos and floor plans as standard.



OUR OFFICE
7 Biggin Street
Loughborough, LE11 1UA

CONTACT US
01509 320 320
let@huntleys.net

