

The image shows a bright, modern living room. On the left, there is a dark wood front door with a semi-circular window and a brass handle, set within an arched doorway. The room features light-colored wood-look laminate flooring and white walls. A large square skylight is positioned in the ceiling. In the center-right, a white fireplace surround houses a black electric fire. To the right of the fireplace, there are three electrical outlets and a light switch on the wall. A doorway in the background leads to a staircase.

Burder Street
Loughborough

2 Bed Terraced House • LE11 1JJ • £1,000 pcm • £1,150 Deposit



Burder Street, Loughborough

This well-presented Victorian terrace home is conveniently situated within walking distance of both Loughborough town centre and the train station. Two double bedrooms, both upstairs and downstairs washrooms, two reception rooms, kitchen and low maintenance garden.

Lounge 3.7m (12'2) x 3.5m (11'6)

Situated at the front of the house this large room has a large window and recessed shelving.

Dining Room 5m (16'5) x 3.5m (11'6)

Offering views to the rear this is a good sized room with, radiator, under stairs storage cupboard, door to kitchen and first floor.

Kitchen 3.8m (12'6) x 1.9m (6'3)

A modern kitchen with wall and base units, roll top work surface with inset sink and drainer, fridge-freezer, oven and gas hob. Double glazed door and window to garden.

Bathroom 1.9m (6'3) x 1.64m (5'5)

A modern three-piece suite comprising of a panelled bath with wall mounted electric shower, toilet, wash hand basin, frosted window to the rear and tiled walls.

Master bedroom 4.2m (13'9) x 3.9m (12'10)

Situated to the front of the property with a large bay window keeping this room light. Ample space for wardrobes and a cupboard over the stairs provides additional storage.

Bedroom Two 3.9m (12'10) x 2.9m (9'6)

A good sized double bedroom with a double-glazed window overlooking the garden, carpeted.

Shower room 2.7m (8'10) x 1.9m (6'3)

A modern three-piece shower suite comprising of an electric shower, toilet, wash hand basin, frosted window to the rear and part tiled walls.

Garden

Small garden to rear.

Parking

On street parking with residents permit.

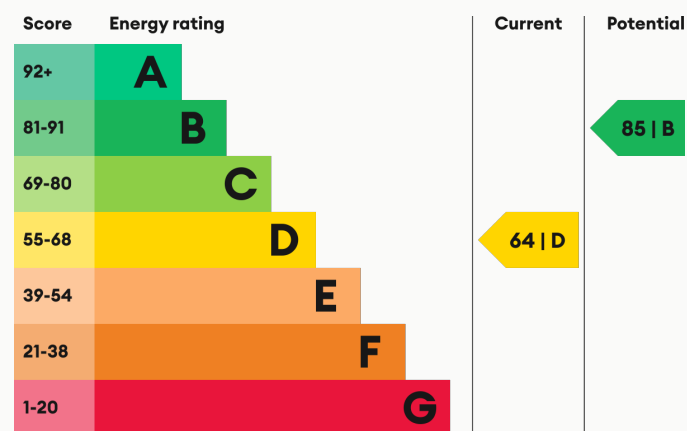
Heating

Gas fired central heating.

Glazing

Modern, good quality, uPVC double glazing.

Energy Performance



We aim to make our particulars both accurate and reliable. However they are not guaranteed; nor do they form part of an offer or contract. If you require clarification on any points then please contact us, especially if you are traveling some distance to view. All measurements are to widest point.



Living Area



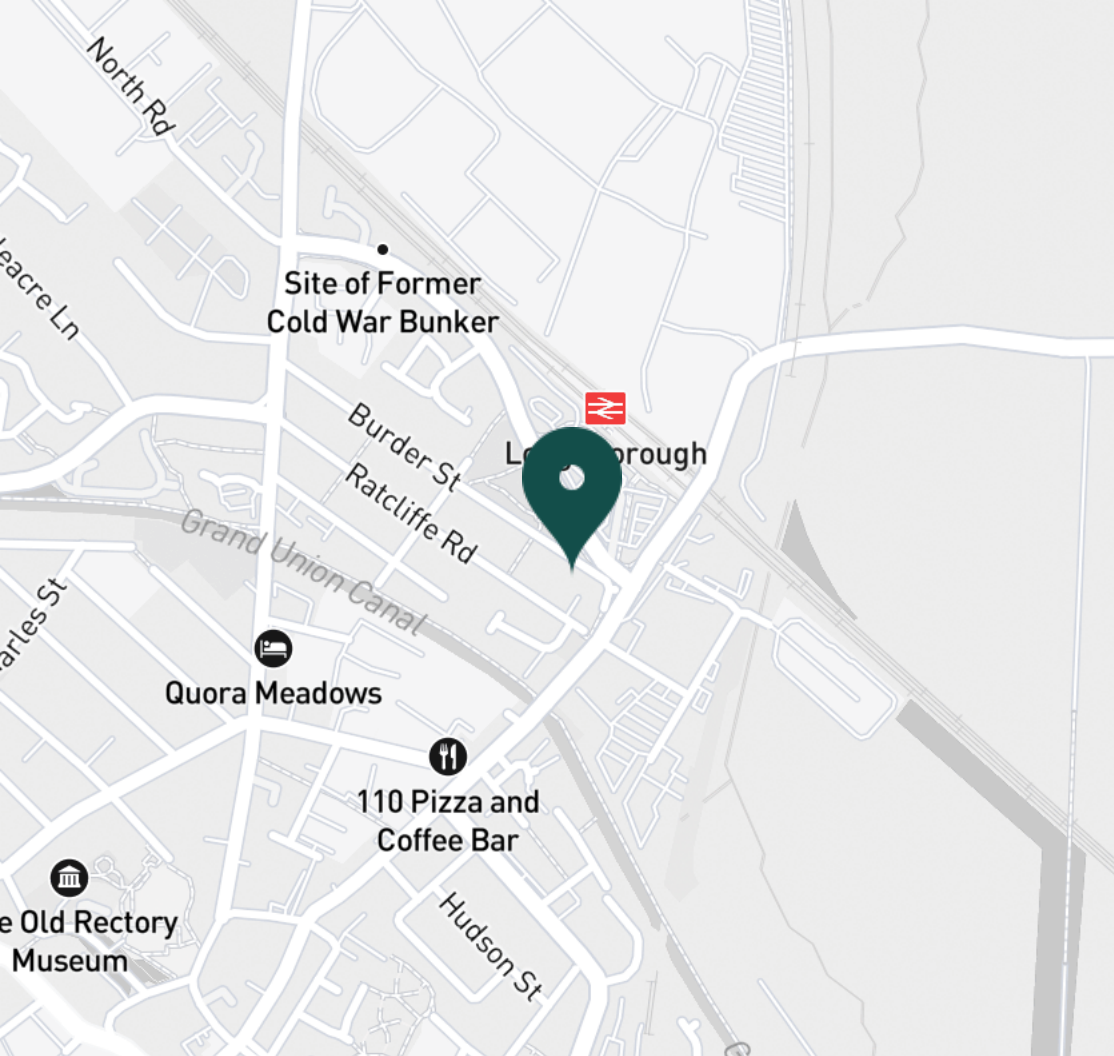
Living Area



Living Area



Living Area



SUPERMARKETS

Aldi Loughborough	0.7 mi
Tesco Superstore Loughborough	0.9 mi
Marks & Spencer	1.0 mi
Lidl Loughborough	1.1 mi
Sainsburys Loughborough	1.2 mi

GYMS

CrossFit Loughborough	0.4 mi
PureGym Loughborough	0.7 mi
Anytime Fitness Loughborough	0.9 mi
Dynamite Gym Ltd	1.2 mi
NPC Performance Centre	1.4 mi

TRAIN STATIONS

Loughborough	0.6 mi
Barrow upon Soar	4.5 mi
Sileby	6.3 mi
East Midlands Parkway	10.4 mi
Syston	11.3 mi

NURSERY SCHOOLS

Babblebrooke Day Nursery	0.8 mi
Cobden Childrens Centre	0.9 mi
Small World Nursery	1.1 mi
Lime Tree Nursery	1.2 mi
Busy Bees in Loughborough	1.4 mi

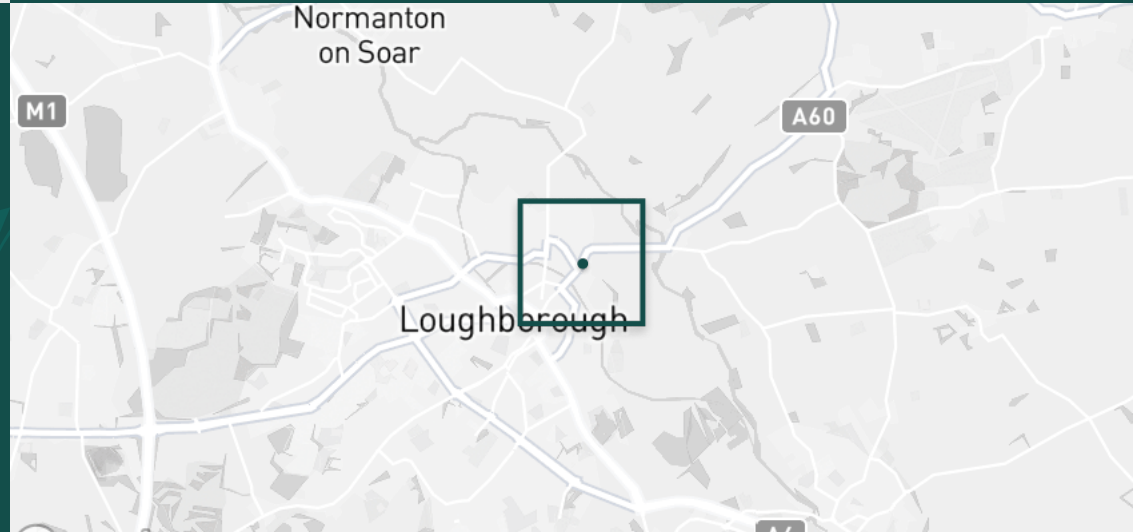
PRIMARY SCHOOLS

Rendell Primary School	0.6 mi
Cobden PS	1.3 mi
Fairfield Preparatory Sch	1.3 mi
St Marys Catholic PS	1.4 mi
Loughborough CE PS	1.5 mi

HIGH SCHOOLS

Limehurst Academy	0.7 mi
RNIB College Loughborough	1.6 mi
Loughborough Grammar Sch	1.7 mi
Loughborough High Sch	1.7 mi
Our Lady's Convent Sch	1.8 mi

Discover
Loughborough



- ✓ Two Double Bedrooms
- ✓ Two washrooms
- ✓ Well Presented
- ✓ Rear garden
- ✓ Close to station
- ✓ Walk to town





Dining Room



Dining Room



Dining Room



Kitchen



Kitchen



Kitchen



Master Bedroom



Master Bedroom



Master Bedroom



Master Bedroom



Bedroom Two



Bedroom Two



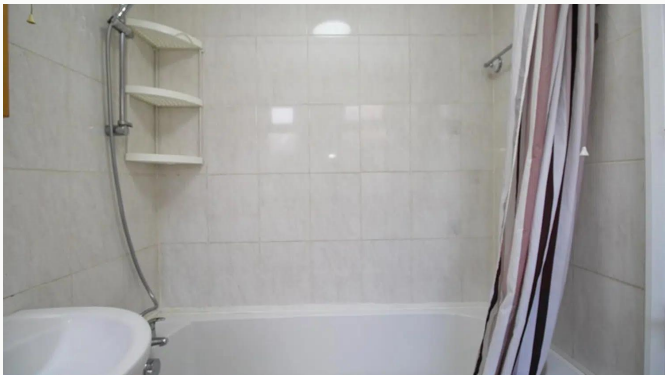
Bedroom Two



Bedroom Two



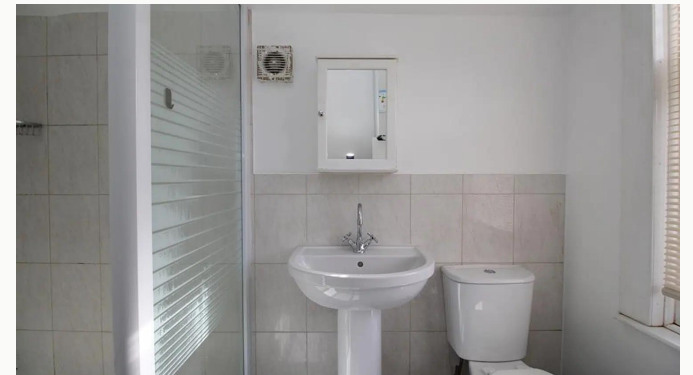
Downstairs Bathroom



Downstairs Bathroom



Shower Room



Shower Room



Shower Room



Garden



Garden

Available
From 18/01/2025

Comes
Unfurnished

Bedrooms
2

Receptions
2

Bathrooms
2

Parking
With permit

Postcode
LE11 1JJ

Rent
£1,000 pcm

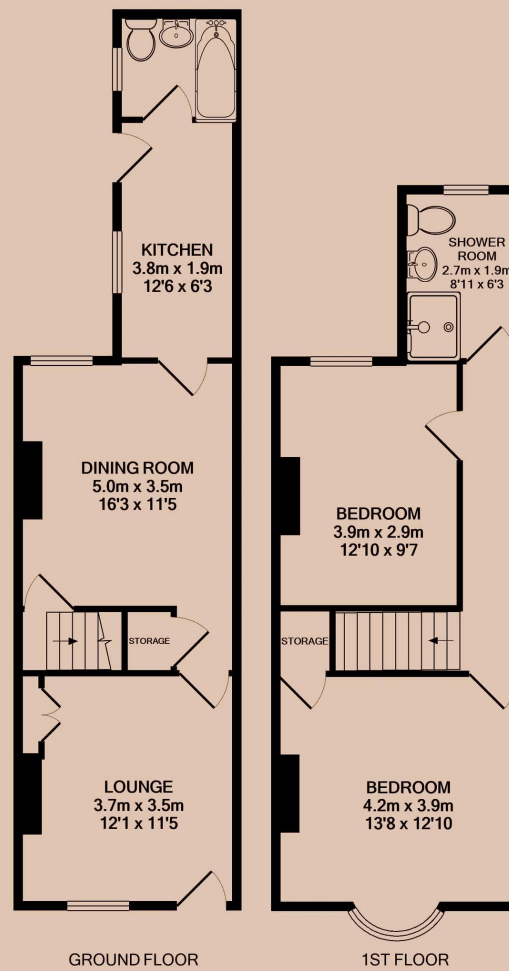
Deposit
£1,150

EPC
64 | D

Council Tax Band
B

ID
#946

Updated
18/01/2025



Have a property like this? Let's work together.

Design and marketing are at the heart of our approach. With most people now looking for property online, we can get our clients' properties in front of as many people as the most prominent national agents. Where we differ is in the quality of our work. We create stunning digital particulars that highlight the individual attributes of every property we market, with videos and floor plans as standard.



OUR OFFICE
7 Biggin Street
Loughborough, LE11 1UA

CONTACT US
01509 320 320
let@huntleys.net

