



Latimer Street

Anstey

1 Bed Ground Floor Apartment • LE7 7AW • £925 pcm • £1,060 Deposit



Energy Performance

TBC

Latimer Street, Anstey

Developed by SOLUS Homes and situated in the heart of Anstey, Leicestershire. This brand new, ground-floor apartment is soon available to let. This property comprises a large living space, open to the contemporary kitchen, a double bedroom with built-in wardrobe, and a smart three-piece bathroom. Underfloor heating throughout, with individual room control. Intruder alarm fitted. Brand new kitchen appliances included. Allocated parking for one car. All photographs and video tour are of actual apartment.

Lounge / Diner

The hub of the home, an open living space, large enough to be used as both lounge and diner. Multiple large windows allow for natural light. Open to the kitchen.

Kitchen

A brand new L-shaped kitchen, open to the living area. Boasting a ceramic brick-tiled splashback and quartz worktop, this contemporary kitchen comes equipped with an integrated dishwasher, washer/dryer, fridge/freezer, oven, and induction hob.

The Bedroom

A sizeable double bedroom, including a built-in wardrobe. This bedroom also comes with underfloor heating with individual heating control.

Bathroom

This beautiful three piece bathroom comes complete with a "rain shower" over the bath, heated towel rail, shaving point and underfloor heating. Classic, brick-bond tiling completes the look.

Parking

Allocated parking for one car, available within the development car park.

Underfloor Heating

Gas-fired, underfloor central heating. Complete with individual room control.

Glazing

Modern, good quality, uPVC double glazing.

We aim to make our particulars both accurate and reliable. However they are not guaranteed; nor do they form part of an offer or contract. If you require clarification on any points then please contact us, especially if you are traveling some distance to view. All measurements are to widest point.



Lounge



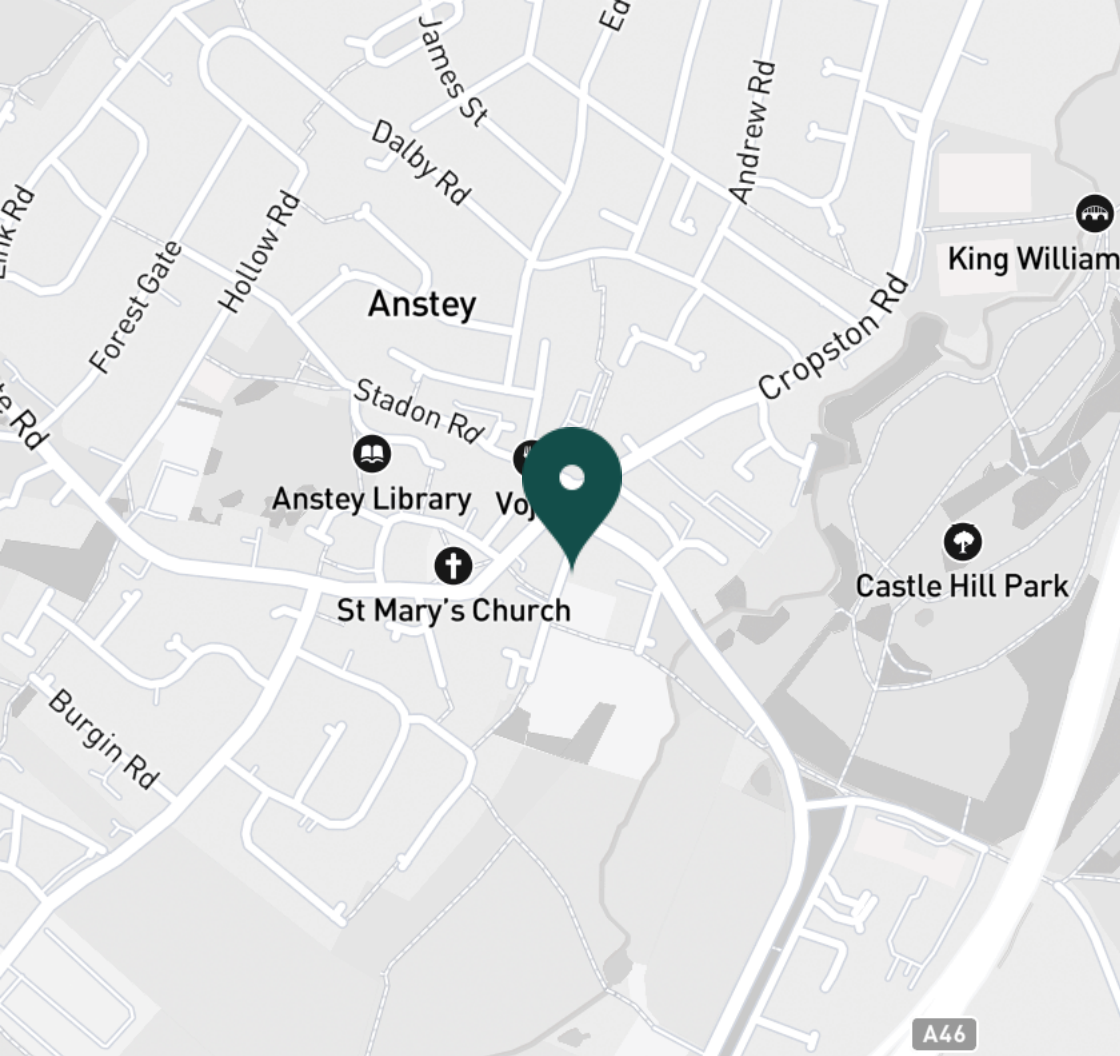
Kitchen / Lounge



Kitchen / Lounge



Kitchen / Lounge



Discover
Anstey

SUPERMARKETS

| | |
|---------------------------|--------|
| Tesco Extra Beaumont Leys | 1.6 mi |
| Co-op Food Groby | 2.7 mi |
| Co-op Food Laundon Way | 2.7 mi |
| Co-op Food Glenfield | 3.3 mi |
| Aldi Abbey Ln | 3.4 mi |

TRAIN STATIONS

| | |
|---------------|--------|
| South Wigston | 2.9 mi |
| Leicester | 4.8 mi |
| Syston | 6.4 mi |
| Sileby | 8.8 mi |
| Narborough | 9.2 mi |

PRIMARY SCHOOLS

| | |
|------------------------|--------|
| Richard Hill CE PS | 2.1 mi |
| Elizabeth Woodville PS | 2.7 mi |
| Woodstock PS | 2.8 mi |
| Lady Jane Grey PS | 2.8 mi |
| Groby Martinshaw PS | 3.2 mi |

GYMS

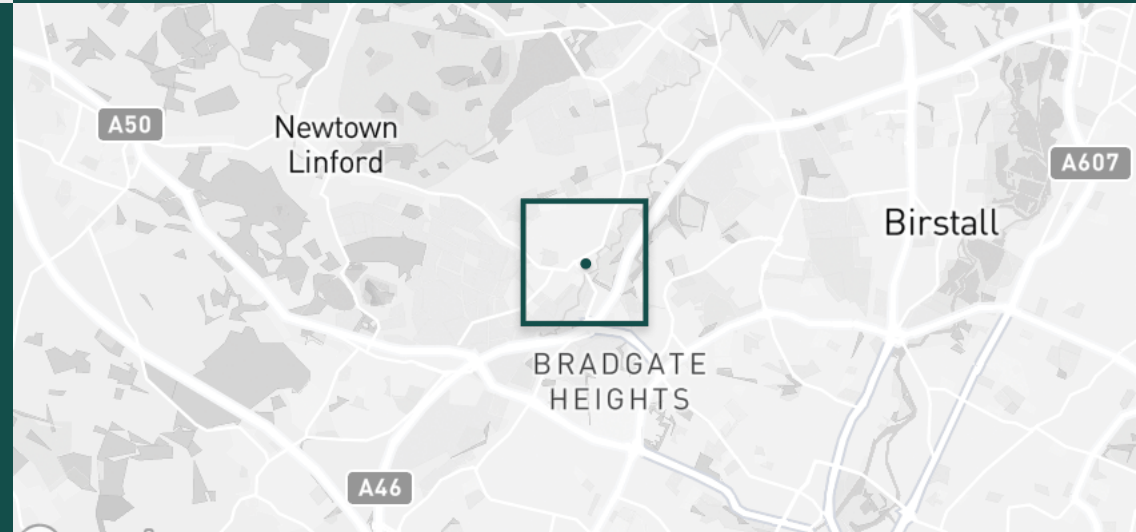
| | |
|------------------------------|--------|
| Progress Works Gym Glenfield | 1.9 mi |
| Hot Bodys Gym Ltd | 3.8 mi |
| DW Gym Group | 4.2 mi |
| The Warehouse Gym | 5.2 mi |
| Fosse Fitness 365 | 5.7 mi |

NURSERY SCHOOLS

| | |
|------------------------------|--------|
| Lilliput Montessori | 0.0 mi |
| Cropston PreSch | 1.7 mi |
| Thurcaston Early Learning PS | 1.9 mi |
| Curious Kittens Childcare | 2.0 mi |
| Mes Enfants | 2.0 mi |

HIGH SCHOOLS

| | |
|---------------------------------|--------|
| Babington Community College | 2.0 mi |
| English Martyrs Catholic School | 2.3 mi |
| Brookvale Groby Learning Campus | 3.5 mi |
| Rushey Mead Academy | 4.6 mi |
| The Roundhill Academy | 6.4 mi |



- ✓ Brand New
- ✓ High-spec Apartment
- ✓ Appliances Included
- ✓ Allocated Parking
- ✓ Anstey Village Centre
- ✓ Ground Floor

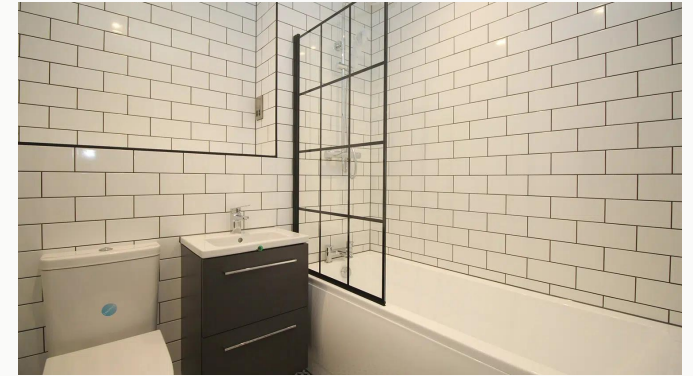




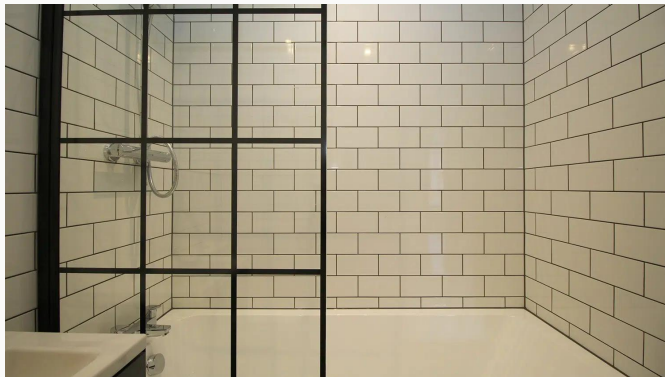
Appliances



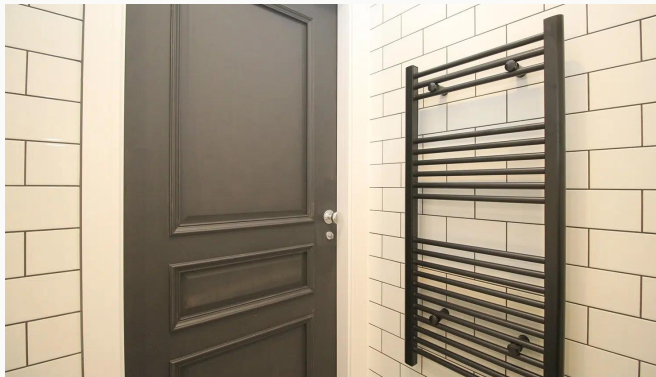
Kitchen



Bathroom



Bathroom



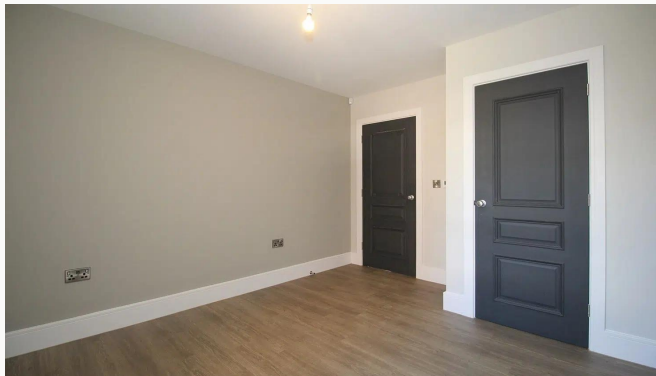
Bathroom



Bedroom



Bedroom



Bedroom



Bathroom



Bedroom



Entrance



Car Park

LATIMER APARTMENTS

ANSTEY LE7 7AW

OPEN PLAN KITCHEN / LIVING AREA
1 PARKING SPACE PER APARTMENT

INTERNAL DOORS / WINDOWS
Bespoke paneled timber doors throughout.
High-quality brushed chrome ironmongery.
Antracite windows

LIGHTING & ELECTRICAL
LED spot lights to kitchen areas.
LED downlights to kitchen units.
Sockets and lighting switch plates finished in chrome.
Data and TV points in all living rooms and bedrooms.
All apartments wired for SKY Q & BT to all living areas.

HEATING AND COOLING
Underfloor heating throughout all apartments, complete with individual room control.

SECURITY
Intruder alarm to ground floor apartments only.

KITCHEN SPECIFICATION
Bespoke charcoal grey designer kitchen with quartz worktop.
Ceramic back-splashed splash back.
Undermount sink.
Lamona electric oven (single in 1 bed & double in 2 beds)
Lamona induction hobbs
Lamona integrated washer dryer
Lamona integrated dishwasher
Lamona integrated fridge/freezer.

FLOORS
Luxury vinyl tile to hallway, living room, kitchen and bedroom.
Ceramic tiling to all bathrooms.

BATHROOM AND EN-SUITE
Under floor heating with Ceramic designer floor tiles.
White ceramic brick tiles to wall & shower areas.
White enamel basin with wall-hung vanity unit.
Chrome mixer taps & wall-mounted shower.
Close coupled VIC with soft-close seat and dual-flush plate.
White enamel top mounted bath.
Antracite towel rail with heated wall panel.
Chrome shower door.

Information

Available
From 15/08/2025

Comes
Unfurnished

Bedrooms
1

Receptions
1

Bathrooms
1

Parking
Allocated

Postcode
LE7 7AW

Rent
£925 pcm

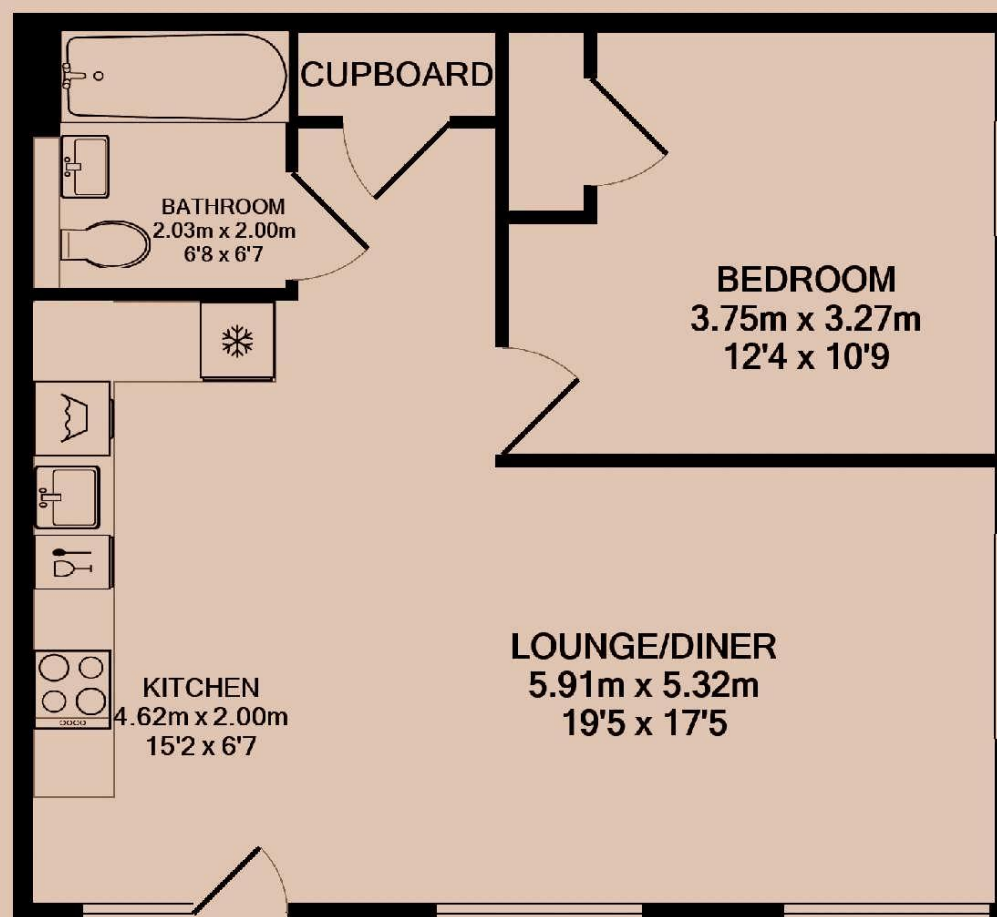
Deposit
£1,060

EPC
Ordered

Council Tax Band
Ask Agent

ID
#16946

Updated
26/06/2025



Have a property like this? Let's work together.

Design and marketing are at the heart of our approach. With most people now looking for property online, we can get our clients' properties in front of as many people as the most prominent national agents. Where we differ is in the quality of our work. We create stunning digital particulars that highlight the individual attributes of every property we market, with videos and floor plans as standard.



OUR OFFICE
7 Biggin Street
Loughborough, LE11 1UA

CONTACT US
01509 320 320
let@huntleys.net

