



Ratcliffe Road
Loughborough

1 Bed Terraced House • LE11 1LF • £750 pcm • £860 Deposit



Ratcliffe Road, Loughborough

Available Now! A newly refurbished one-bedroom ground floor flat, presented in excellent condition throughout and available for immediate occupation. The property boasts a modern three-piece bathroom suite featuring a walk-in shower, alongside a smart fitted kitchen including a fridge, washing machine, electric hob and oven. To the rear of the property is a street-facing; spacious double bedroom.

Lounge

A sizeable lounge area, featuring an electric fireplace, sofa, television and cupboard space.

Kitchen

A newly fitted smart kitchen, featuring a washing machine, small fridge and electric hob and oven.

Master Bedroom

A sizeable double bedroom, situated to the front of the property, featuring LED lighting and aircon and heating unit.

Bathroom

A newly installed, contemporary bathroom suite featuring a wash hand basin, WC and walk-in shower.

Garden

A quaint, low-maintenance garden situated to the front of the property.

Parking

Parking Permit.

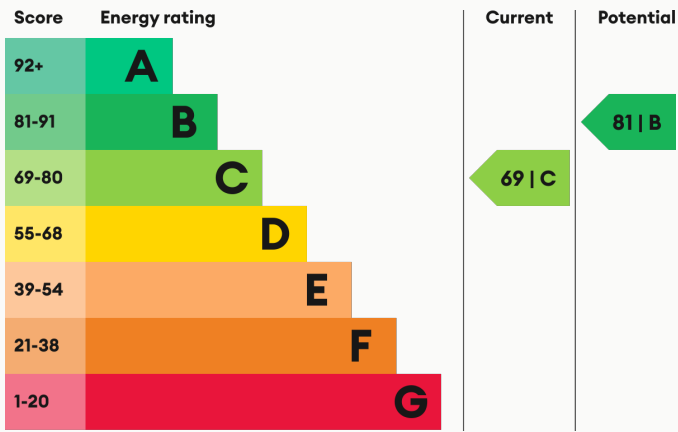
Heating

Aircon and Heating Unit.

Glazing

Modern, good quality, uPVC double glazing.

Energy Performance



We aim to make our particulars both accurate and reliable. However they are not guaranteed; nor do they form part of an offer or contract. If you require clarification on any points then please contact us, especially if you are traveling some distance to view. All measurements are to widest point.



Lounge



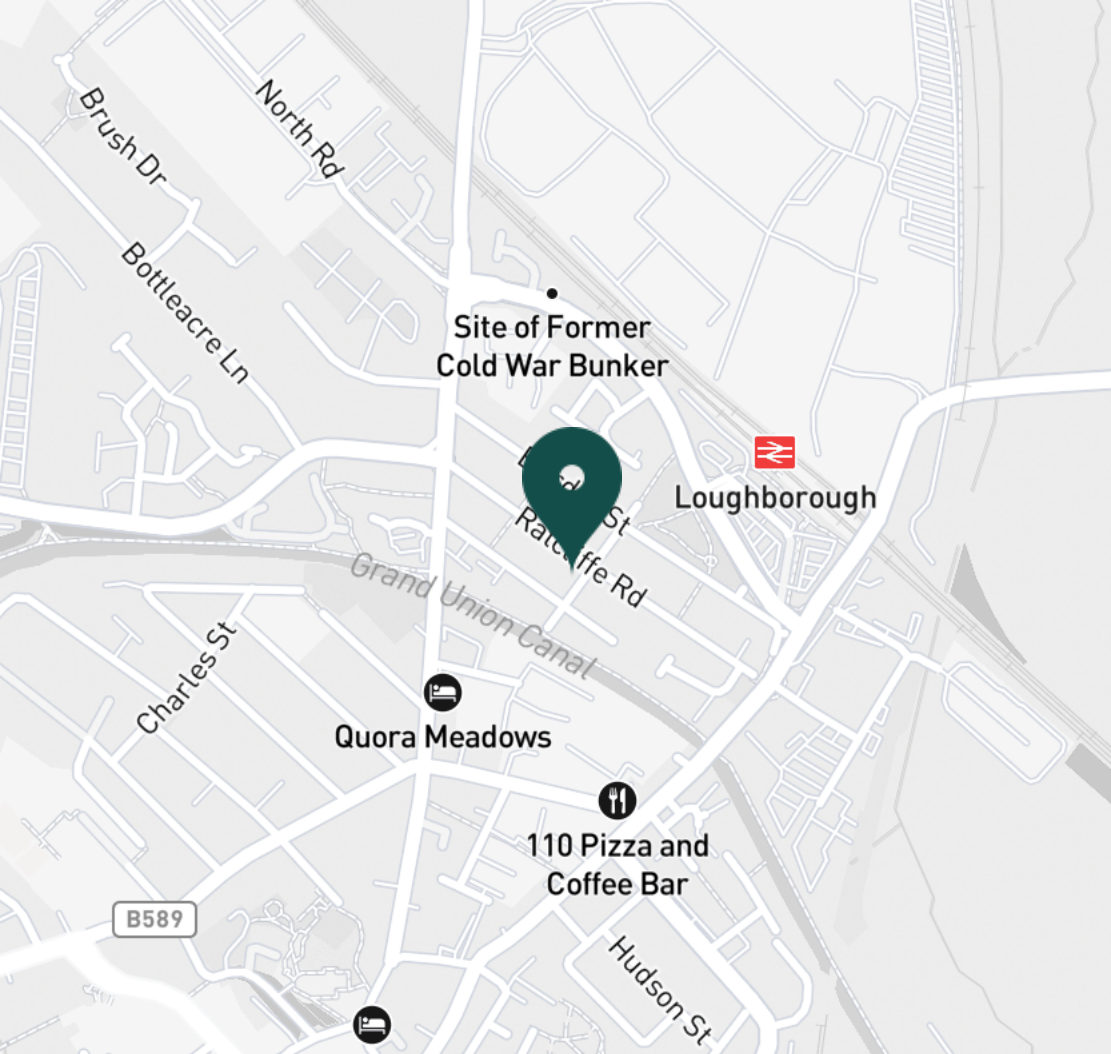
Kitchen



Kitchen



Bathroom



SUPERMARKETS

Aldi Loughborough	0.5 mi
Tesco Superstore Loughborough	0.8 mi
Marks & Spencer	0.9 mi
Lidl Loughborough	0.9 mi
Sainsburys Loughborough	1.1 mi

GYMS

CrossFit Loughborough	0.3 mi
PureGym Loughborough	0.6 mi
Anytime Fitness Loughborough	0.7 mi
Dynamite Gym Ltd	1.0 mi
NPC Performance Centre	1.2 mi

TRAIN STATIONS

Loughborough	0.5 mi
Barrow upon Soar	4.3 mi
Sileby	6.2 mi
East Midlands Parkway	10.2 mi
Syston	10.5 mi

NURSERY SCHOOLS

Babblebrooke Day Nursery	0.6 mi
Cobden Childrens Centre	0.8 mi
Small World Nursery	1.0 mi
Lime Tree Nursery	1.1 mi
Busy Bees in Loughborough	1.2 mi

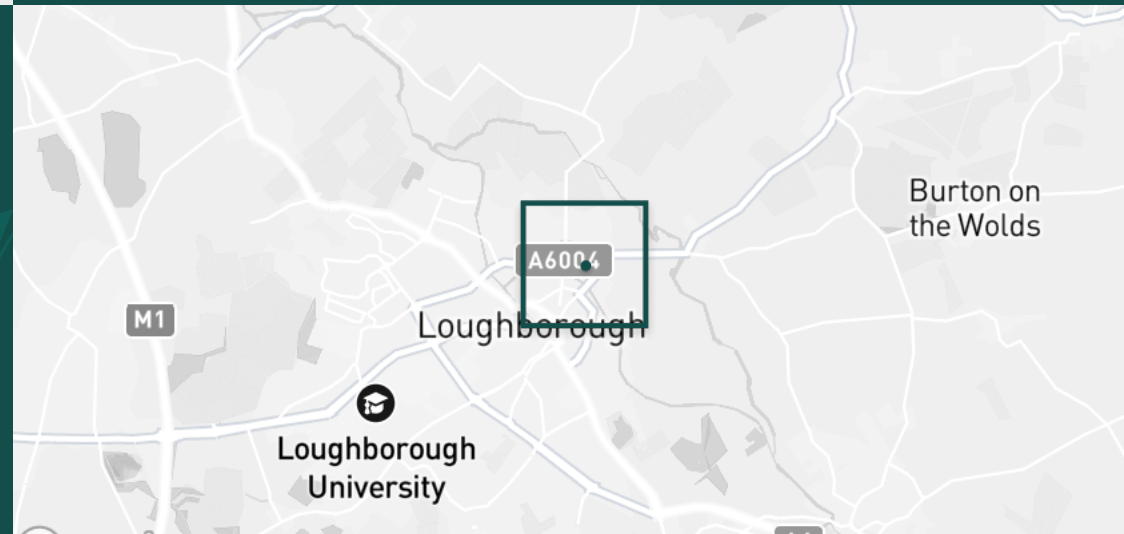
PRIMARY SCHOOLS

Rendell Primary School	0.4 mi
Cobden PS	1.0 mi
Fairfield Preparatory Sch	1.2 mi
St Marys Catholic PS	1.2 mi
Loughborough CE PS	1.4 mi

HIGH SCHOOLS

Limehurst Academy	0.5 mi
RNIB College Loughborough	1.5 mi
Our Lady's Convent Sch	1.5 mi
Loughborough High Sch	1.6 mi
The Garendon High Sch	1.9 mi

Discover
Loughborough



- ✓ Recently Refurbished
- ✓ Excellent Condition
- ✓ Close to Town Centre
- ✓ Available Now
- ✓ Loughborough
- ✓ Modern Decoration

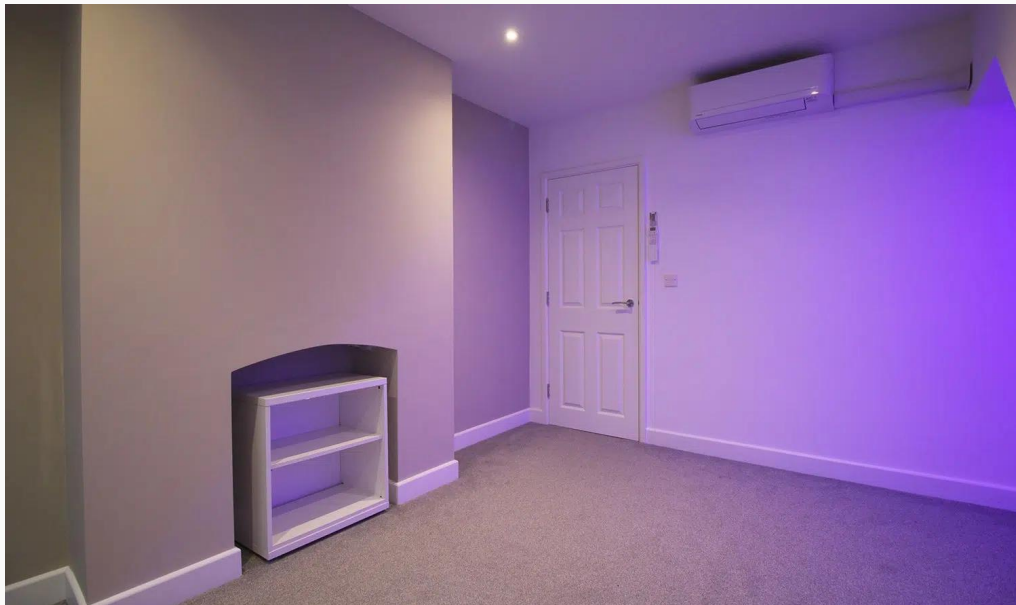




Master Bedroom



Master Bedroom



Master Bedroom



Front of House

Available
From 09/02/2026

Rent
£750 pcm

Comes
Unfurnished

Deposit
£860

Bedrooms
1

EPC
69 | C

Receptions
1

Council Tax Band
A

Bathrooms
1

ID
#18837

Parking
With permit

Updated
09/02/2026

Postcode
LE11 1LF



Have a property like this? Let's work together.

Design and marketing are at the heart of our approach. With most people now looking for property online, we can get our clients' properties in front of as many people as the most prominent national agents. Where we differ is in the quality of our work. We create stunning digital particulars that highlight the individual attributes of every property we market, with videos and floor plans as standard.



OUR OFFICE
7 Biggin Street
Loughborough, LE11 1UA

CONTACT US
01509 320 320
let@huntleys.net

