



St Andrew Close
Gotham, Nottingham

4 Bed Semi-Detached House • NG11 0JE • £1,300 pcm • £1,500 Deposit



St Andrew Close, Gotham, Nottingham

Soon available to let in Gotham, Nottinghamshire. A semi-detached, four-bedroom house presented in fantastic condition. This property comes with four bedrooms, lounge, kitchen, dining room, utility room, bathroom, and shower room. To the rear of the property is an extended garden overlooking the countryside. Driveway parking available to the front of the property and in front of the utility. This property also comes with some furniture pictured, and necessary appliances.

Lounge

Set to the front of the property overlooking St Andrew Close. This neutral living room comes with some furniture pictured and a feature electric fireplace.

Dining Room

A second reception room, currently being used as the diner. This room has French doors giving access to, and views of the garden. This room also gives access to the downstairs shower room. Some furniture pictured included.

Kitchen

A contemporary U-shaped kitchen within the middle of the home. This kitchen comes equipped with a fridge/freezer, dishwasher, oven, and hob.

Utility

A practical utility room including a sink, and washing machine. This room has external access to both the garden and the driveway.

Master Bedroom

Set on the first floor, a double bedroom overlooking the rear garden. Some furniture pictured included.

Bedroom Two

A second double bedroom set on the first floor, overlooking St Andrew Close. Some furniture pictured included.

Bedroom Three

A third bedroom on the first floor.

Bedroom Four

This double bedroom is set on the ground floor. French doors give access to, and views of the rear garden.

Bathroom

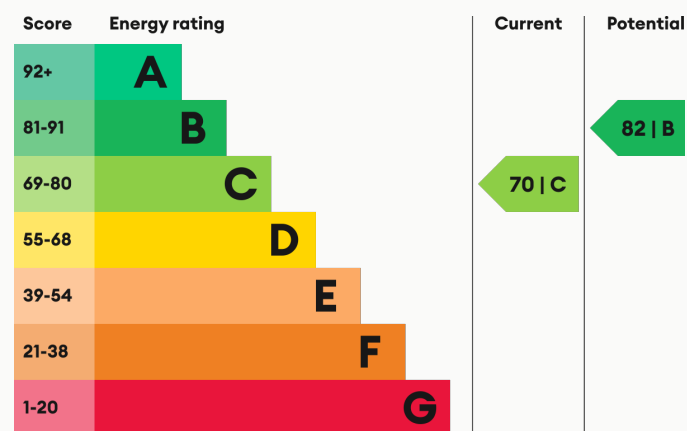
Set on the first floor, a three piece bathroom including a bath, sink, toilet, and shower above the bath.

Shower Room

Located on the ground floor, accessed via the diner. A three piece shower room including a walk-in shower, sink, and toilet.

For more information about this property, visit our website huntleys.net.

Energy Performance



We aim to make our particulars both accurate and reliable. However they are not guaranteed; nor do they form part of an offer or contract. If you require clarification on any points then please contact us, especially if you are traveling some distance to view. All measurements are to widest point.



Lounge



Lounge



Lounge



Lounge



SUPERMARKETS

Morrisons Clifton	3.1 mi
Co-op Food East Leake	3.3 mi
Co-op Food Kegworth	4.6 mi
Sainsburys Castle Bridge Rd	6.7 mi
Asda West Bridgford	7.7 mi

GYMS

CFN Gym	3.7 mi
Roko Health Club Nottingham	5.1 mi
LivingWell Health Club East Midlands	6.3 mi
The Lenton Centre	6.7 mi
Castle Gym	7.0 mi

TRAIN STATIONS

East Midlands Parkway	4.6 mi
Nottingham	7.1 mi
Loughborough	7.8 mi
Beeston	8.1 mi
Long Eaton	10.4 mi

NURSERY SCHOOLS

Lantern Lane P and N	3.2 mi
The Honey Bee Day Nursery	3.3 mi
East Leake Day Nursery & PS	3.9 mi
Costock Playgroup	4.4 mi
Handkerchief Day Nursery	6.2 mi

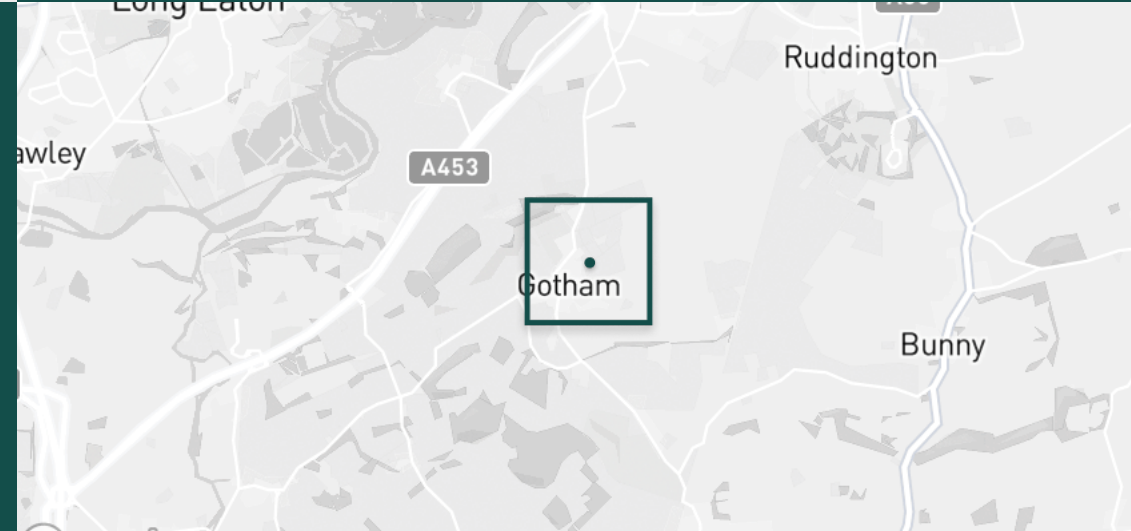
PRIMARY SCHOOLS

Kegworth Primary School	4.8 mi
Sutton Bonington PS	5.3 mi
Long Whatton CE PS	7.9 mi
Rendell Primary School	7.9 mi
Hemington PS	8.6 mi

HIGH SCHOOLS

East Leak Academy	3.2 mi
Limehurst Academy	8.0 mi
Our Lady's Convent Sch	9.0 mi
Loughborough Grammar Sch	9.1 mi
Loughborough High Sch	9.2 mi

Discover
Gotham, Nottingham



- ✓ Large Garden
- ✓ Part Furnished
- ✓ Countryside Views
- ✓ Two Washrooms
- ✓ Pets Considered
- ✓ Appliances Included





Kitchen



Kitchen



Dining Room



Dining Room



Dining Room



Utility



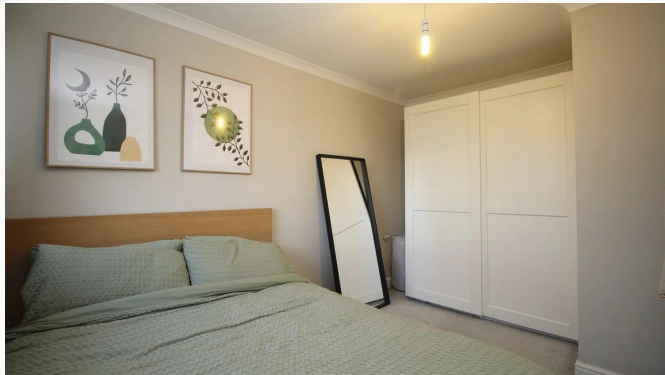
Utility



Utility



Master Bedroom



Master Bedroom



Master Bedroom



Bedroom Two



Bedroom Two



Bedroom Two



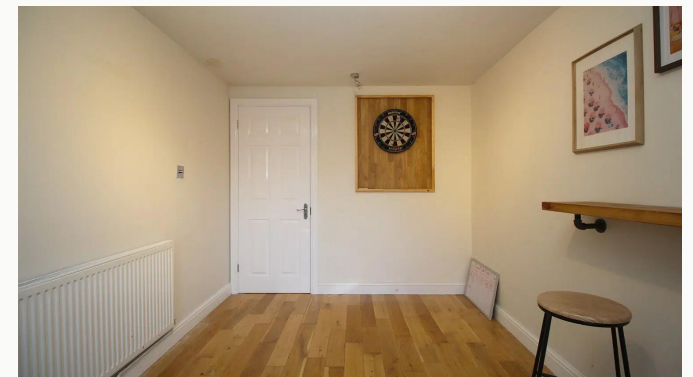
Bedroom Three



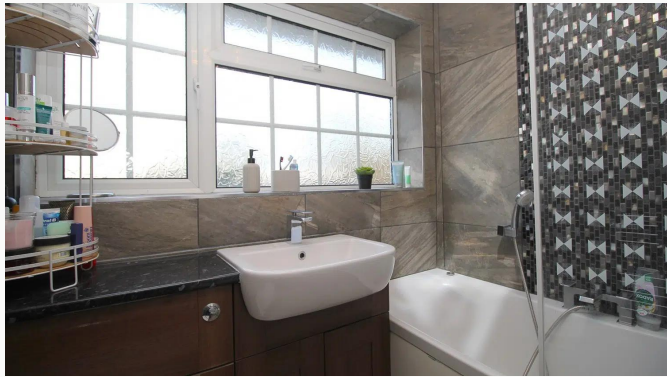
Bedroom Three



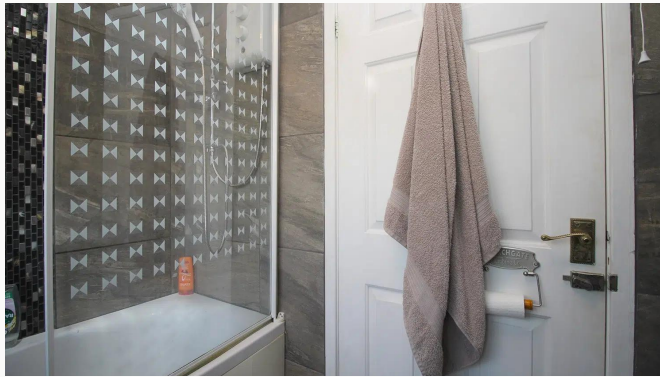
Bedroom Four



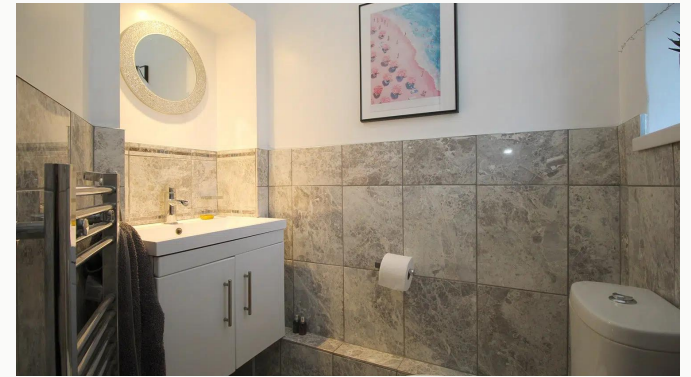
Bedroom Four



Bathroom



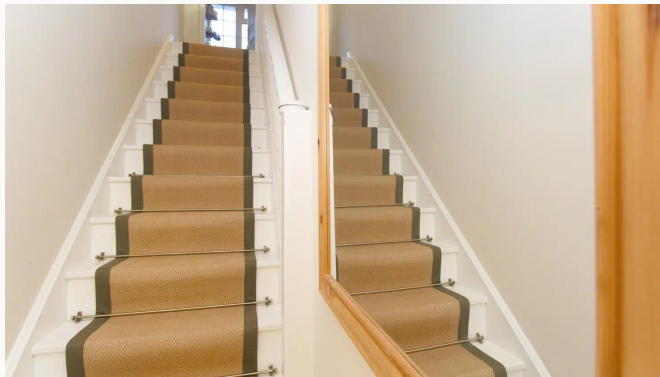
Bathroom



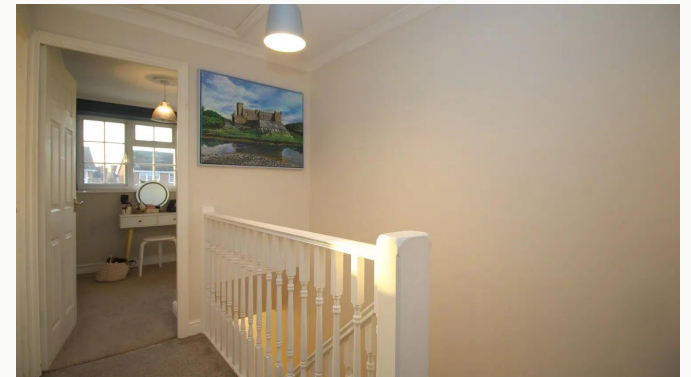
Shower Room



Shower Room



Stairway



Landing



Garden



Garden



Garden



Garden



Garden



St Andrew Close

Available
From 27/01/2025

Comes
Part Furnished

Bedrooms
4

Receptions
2

Bathrooms
2

Parking
Driveway

Postcode
NG11 0JE

Rent
£1,300 pcm

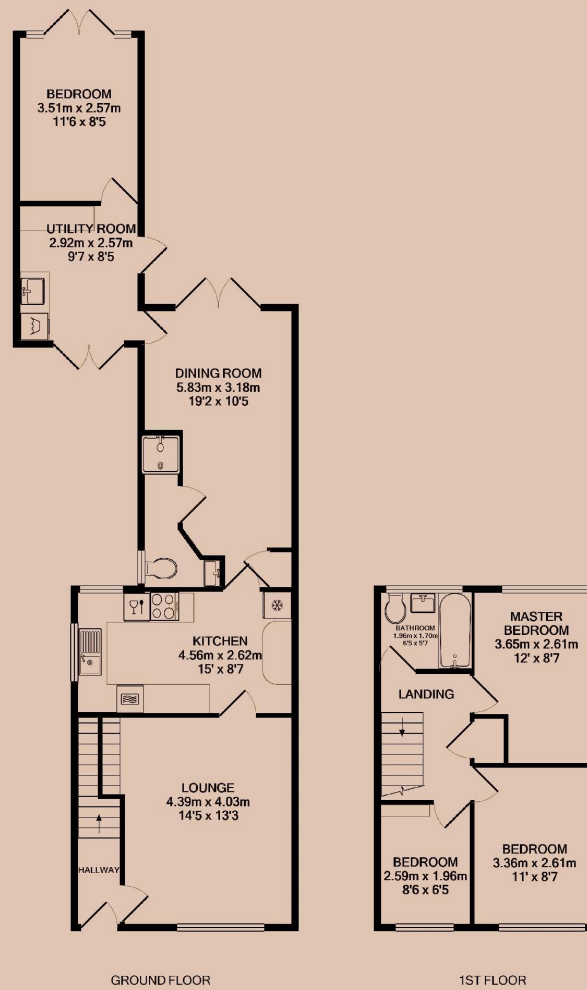
Deposit
£1,500

EPC
70 | C

Council Tax Band
C

ID
#15559

Updated
06/01/2025



Have a property like this? Let's work together.

Design and marketing are at the heart of our approach. With most people now looking for property online, we can get our clients' properties in front of as many people as the most prominent national agents. Where we differ is in the quality of our work. We create stunning digital particulars that highlight the individual attributes of every property we market, with videos and floor plans as standard.



OUR OFFICE
7 Biggin Street
Loughborough, LE11 1UA

CONTACT US
01509 320 320
let@huntleys.net



Huntleys

