



**1 Bed House Share to rent, Selbourne Street, Loughborough, LE11 1BS**

**£500/pcm (£115/pw) + £570 deposit [ EPC: E ] • Apply online •**



Bedroom

## Selbourne Street, Loughborough, LE11 1BS

A large, furnished, double BEDROOM in a SHARED HOUSE. Includes a stylish and furnished kitchen with appliances, spacious communal lounge and two shower rooms. A sizeable garden to the rear and non-restricted on street parking to the front. Bills included. Close to town centre and University. Now available to let.

**Communal Lounge** 4.58m (15'0) x 3.61m (11'10)

A spacious living room, including two sofas and a coffee table, the social hub of the property.

**Communal Kitchen** 3.97m (13'0) x 2.12m (6'11)

A modern kitchen situated to the rear of the property. This kitchen includes a fridge/freezer, washing machine and two cookers and hobs.

**Bedroom** 5.26m (17'3) x 4.58m (15'0)

The largest bedroom in the property, covering the entire top floor. This room includes a double bed and mattress, wardrobe, sink and counter.

**Shower Room** 2.12m (6'11) x 1.92m (6'4)

A shared wash room, situated at the rear of the property on the first floor. This room includes a walk in shower, toilet and sink.

### Please note

We aim to make our particulars both accurate and reliable. However, they are not guaranteed, nor do they form part of an offer or contract. Please get in touch with us if you require any clarification, especially if you are travelling some distance to view. All measurements are to the widest point.

**Shower Room** 2.18m (7'2) x 1.09m (3'7)

A second shared wash room, situated next to the other shower room. This room also includes a walk in shower, toilet and sink.

### Garden

A spacious garden to the rear, accessed via the kitchen external door.

### Parking

Non-restricted on street parking available to the front of the property.

### Heating

Gas-fired central heating.

### Glazing

Modern, good quality, uPVC double glazing.





Bedroom



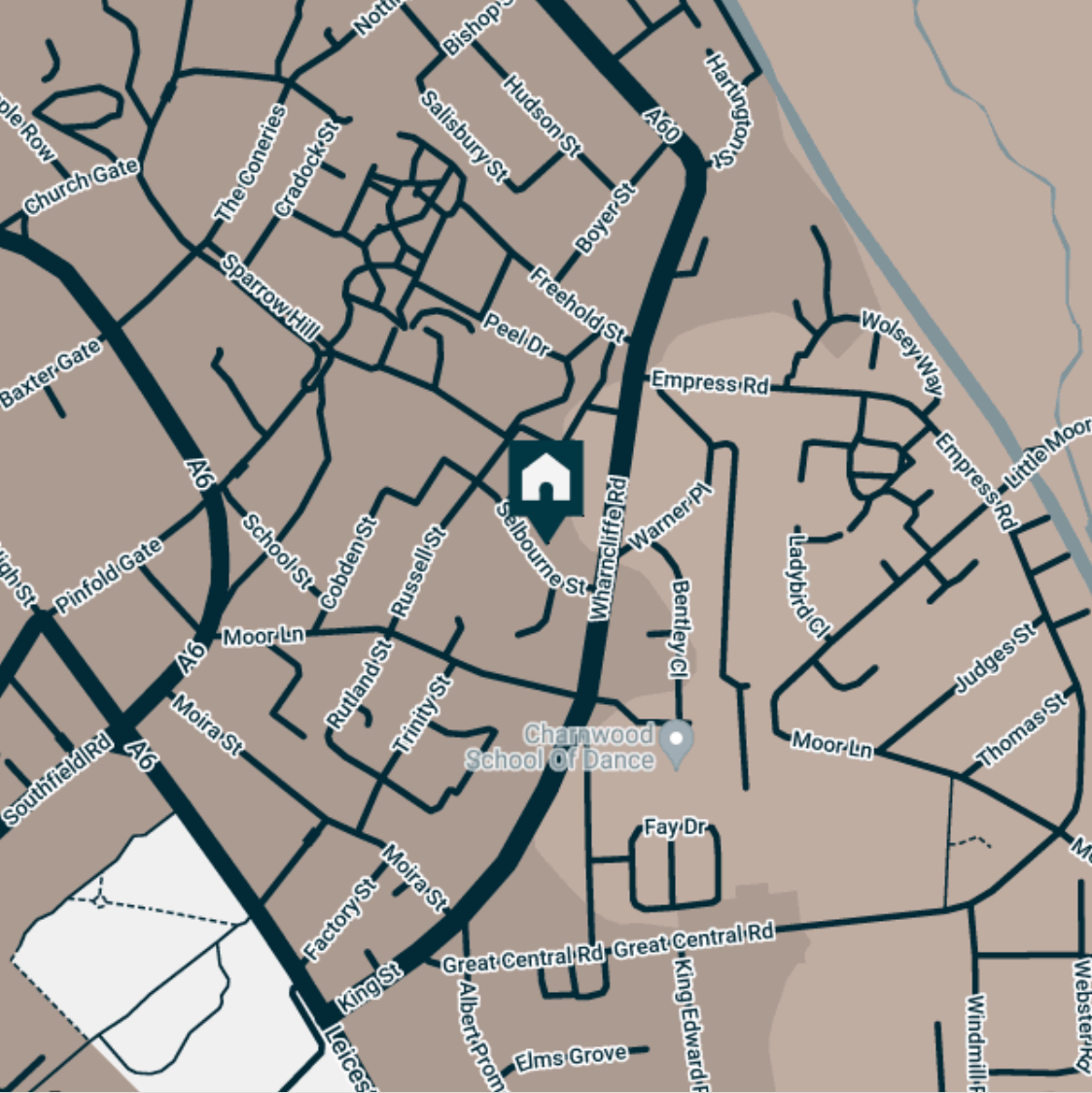
Bedroom



Bedroom



Communal Lounge



**Supermarkets**

Marks & Spencer	0.4 mi.
Tesco Superstore Loughborough	0.5 mi.
Sainsburys Loughborough	0.5 mi.
Lidl Loughborough	0.8 mi.
Aldi Loughborough	0.8 mi.

**Gyms**

Dynamite Gym Ltd	0.2 mi.
Fit4Less	0.3 mi.
Jim Play	0.3 mi.
NPC Performance Centre	0.3 mi.
PureGym Loughborough	0.4 mi.

**Train Stations**

Loughborough	0.5 mi.
Barrow upon Soar	2.7 mi.
Sileby	4.6 mi.
East Midlands Parkway	6.9 mi.
Syston	7.2 mi.

**Nursery Schools**

Cobden Childrens Centre	0.1 mi.
Lime Tree Nursery	0.2 mi.
Westwards Nursery	0.5 mi.
Babblebrooke Day Nursery	0.5 mi.
Small World Nursery	0.5 mi.

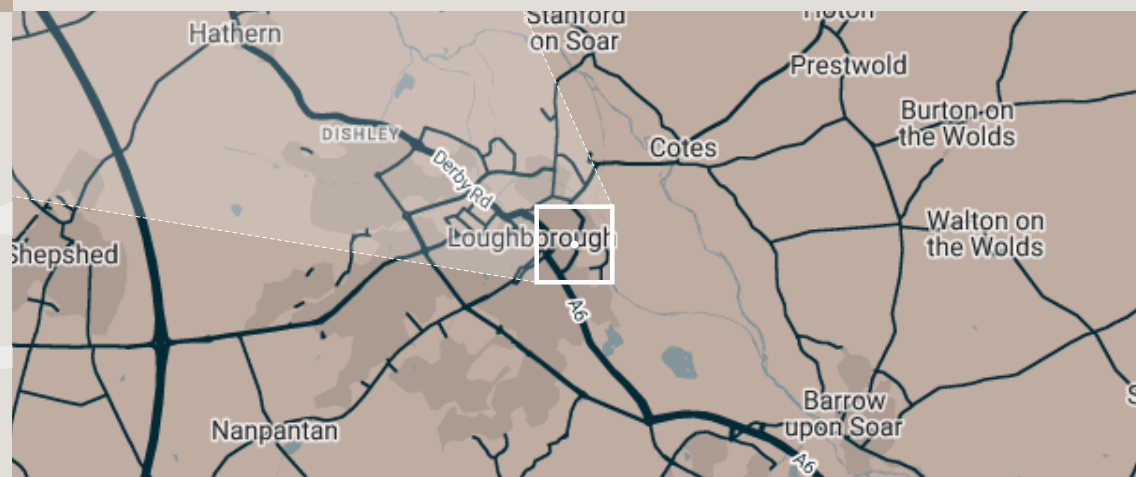
**Primary Schools**

Cobden Primary Sch	0.1 mi.
Fairfield Preparatory Sch	0.3 mi.
Our Lady's Convent Sch	0.5 mi.
Rendell Primary Sch	0.5 mi.
Loughborough Grammar Sch	0.5 mi.

**High Schools**

Our Lady's Convent Sch	0.5 mi.
Limehurst Academy	0.5 mi.
Loughborough Grammar Sch	0.5 mi.
Loughborough High Sch	0.5 mi.
RNIB College Loughborough	0.8 mi.

Discover  
Loughborough





## Features

- ✓ House Share
- ✓ Close to University
- ✓ Appliances Included
- ✓ Close to Town Centre
- ✓ Bills Included
- ✓ Available Now







Communal Lounge



Communal Lounge



Communal Kitchen



Communal Kitchen



Communal Kitchen



Shower Room



Shower Room



Landing



Selbourne Street

**Available**

Now

**Rent**

£500/pcm

**Comes**

Furnished

**Deposit**

£570

**Bedrooms**

1

**EPC**

E (40)

**Receptions**

1

**Council tax**

Band B

**Bathrooms**

2

**ID**

#9695

**Parking**

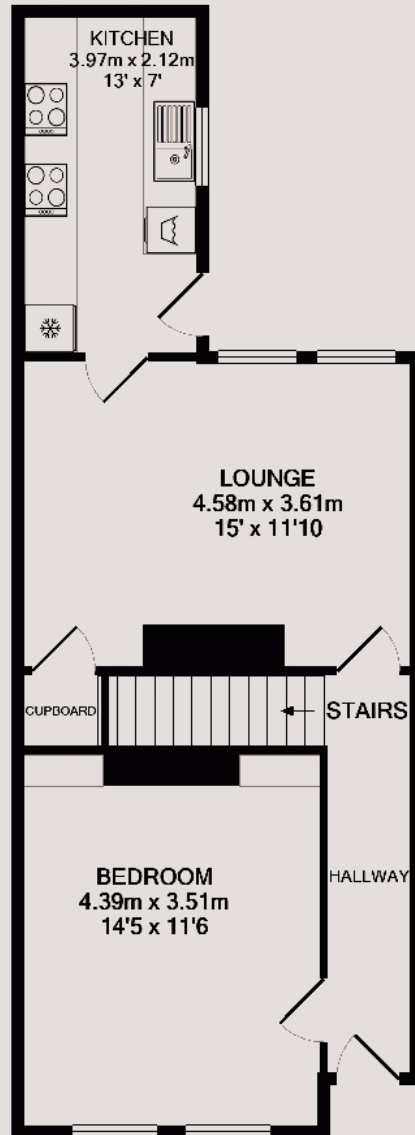
With permit

**Updated**

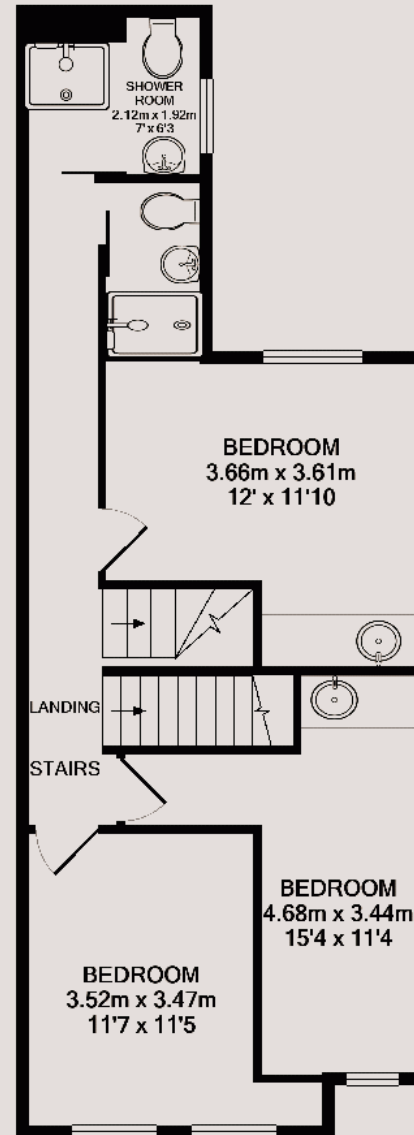
2 December 2022

**Postcode**

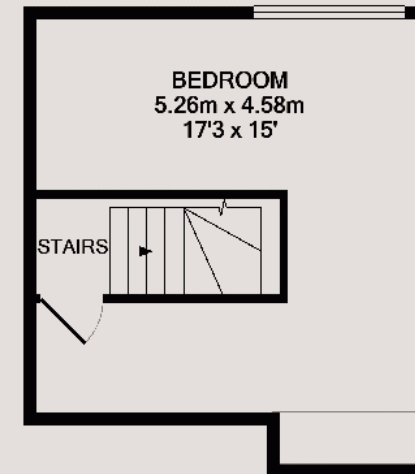
LE11 1BS



GROUND FLOOR



1ST FLOOR



2ND FLOOR





## Have a property like this? Let's work together

Design and marketing are at the heart of our approach. With most people now looking for property online, we can get our clients' properties in front of as many people as the most prominent national agents. Where we differ is in the quality of our work. We create stunning digital particulars that highlight the individual attributes of every property we market, with videos and floor plans as standard.

**Need a tenant? Ready to switch agents? Want to find out more? Call us between 9 am and 6 pm on 01509 320 320 or scan the link to find out more.**



**OUR OFFICE**

7 Biggin Street  
Loughborough, LE11 1UA

**CONTACT US**

01509 320 320  
Let@Huntleys.net

