

A three-story white building with a red brick chimney and ground-floor shops. The building is located on a street corner. The ground floor has two shops: 'FRINGE' and 'BARBERS'. The building has several windows and a small sign that says 'FENNEL STREET'. There are some bushes and a green utility box in the foreground.

# *Rectory Place*

Loughborough

1 Bed 1st Floor Apartment • LE11 1UW • £700 pcm • £800 Deposit



## Rectory Place, Loughborough

Positioned within the town centre of Loughborough. An unfurnished, one bedroom, duplex apartment. This property comes with a Lounge, open to the kitchen, double bedroom and shower room. Now available to let.

### Lounge

Open to the kitchen, a bright and neutral living area.

### Kitchen

A new and modern L-shaped kitchen, open to the lounge. This kitchen comes with a fridge, washing machine, oven, and hob.

### Bedroom

Set on the first floor, a double bedroom including built-in storage.

### Shower Room

Set on the first floor, a three piece shower room, including a walk-in shower, sink, and toilet.

### Parking

Parking available on nearby streets. Will require an application for a parking permit.

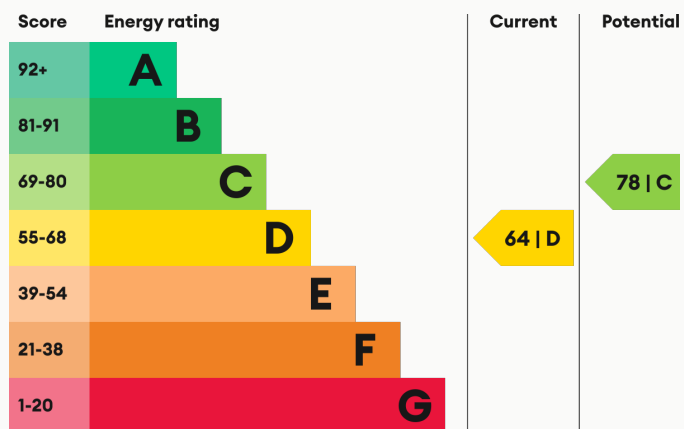
### Heating

Gas-fired central heating.

### Glazing

Modern, good quality, uPVC double glazing.

### Energy Performance



We aim to make our particulars both accurate and reliable. However they are not guaranteed; nor do they form part of an offer or contract. If you require clarification on any points then please contact us, especially if you are traveling some distance to view. All measurements are to widest point.



Lounge / Kitchen



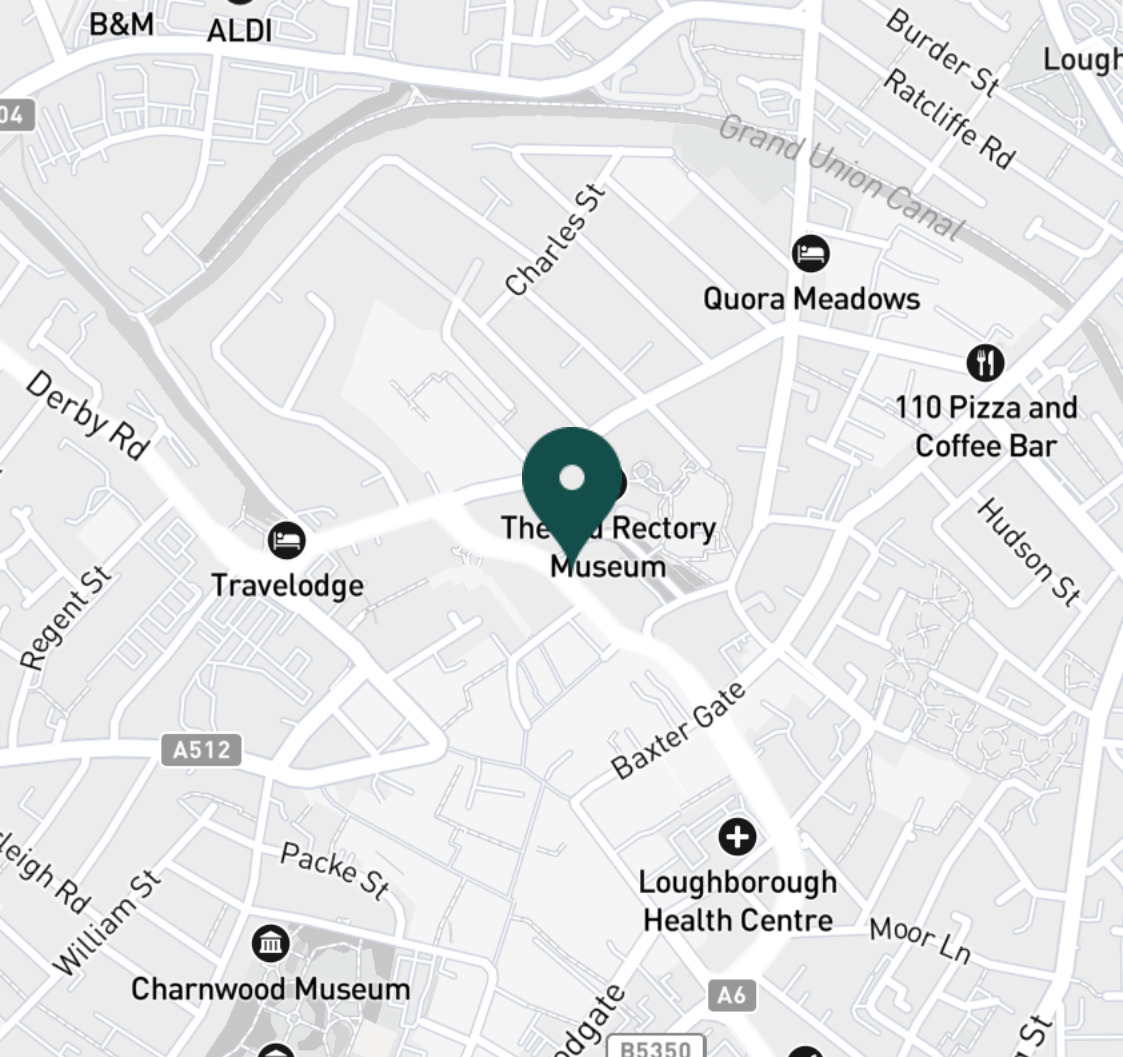
Lounge / Kitchen



Lounge / Kitchen



Lounge / Kitchen



#### SUPERMARKETS

Tesco Superstore Loughborough	0.3 mi
Marks & Spencer	0.4 mi
Lidl Loughborough	0.6 mi
Sainsburys Loughborough	0.6 mi
Aldi Loughborough	0.9 mi

#### GYMS

PureGym Loughborough	0.0 mi
Anytime Fitness Loughborough	0.3 mi
Dynamite Gym Ltd	0.5 mi
CrossFit Loughborough	0.5 mi
NPC Performance Centre	0.9 mi

#### TRAIN STATIONS

Loughborough	1.0 mi
Barrow upon Soar	3.9 mi
Sileby	5.7 mi
East Midlands Parkway	10.0 mi
Syston	10.6 mi

#### NURSERY SCHOOLS

Babblebrooke Day Nursery	0.2 mi
Cobden Childrens Centre	0.4 mi
Small World Nursery	0.5 mi
Lime Tree Nursery	0.6 mi
Kingscliffe Day Nursery	0.7 mi

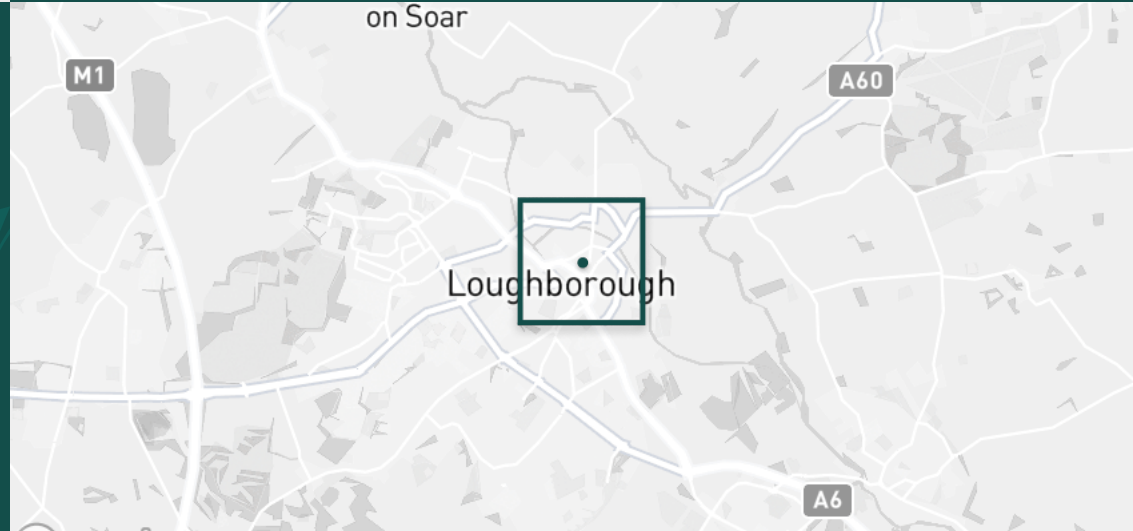
#### PRIMARY SCHOOLS

Cobden PS	0.5 mi
Rendell Primary School	0.5 mi
St Marys Catholic PS	0.6 mi
Fairfield Preparatory Sch	0.6 mi
Loughborough CE PS	0.9 mi

#### HIGH SCHOOLS

Limehurst Academy	0.2 mi
RNIB College Loughborough	1.0 mi
Our Lady's Convent Sch	1.0 mi
Loughborough Grammar Sch	1.0 mi
Loughborough High Sch	1.0 mi

Discover  
*Loughborough*





Kitchen



Kitchen



Bedroom



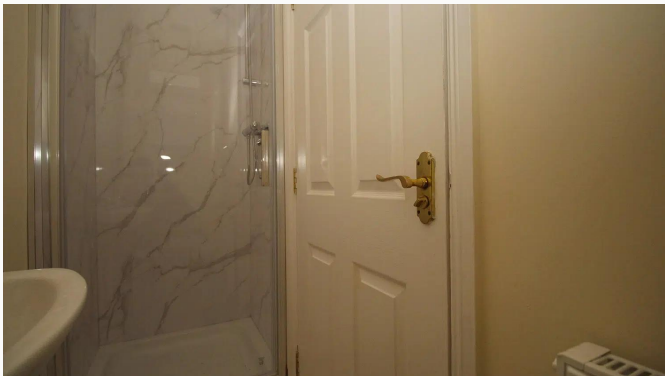
Bedroom



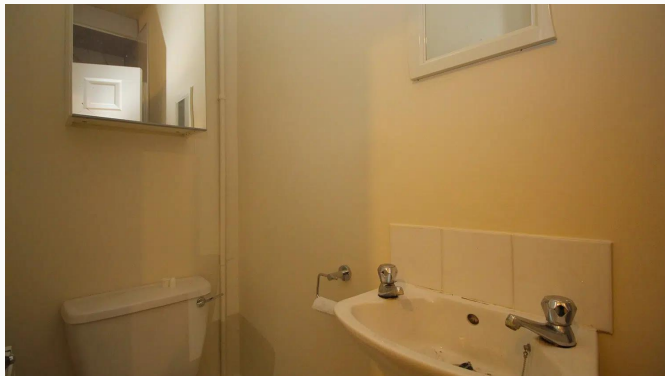
Bedroom



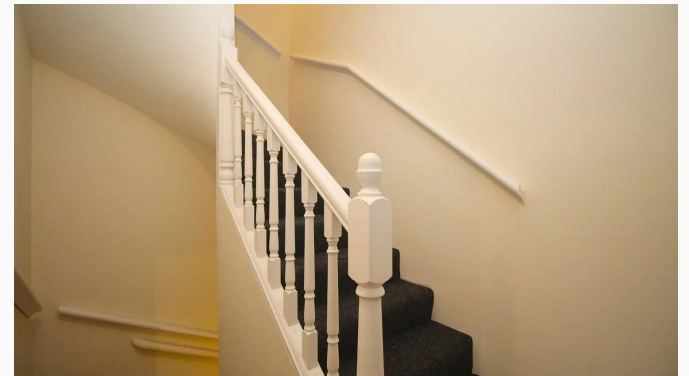
Bedroom



Shower Room



Shower Room



Landing

**Available**  
From 06/11/2024

**Comes**  
Unfurnished

**Bedrooms**  
1

**Receptions**  
1

**Bathrooms**  
1

**Parking**  
With permit

**Postcode**  
LE11 1UW

**Rent**  
£700 pcm

**Deposit**  
£800

**EPC**  
64 | D

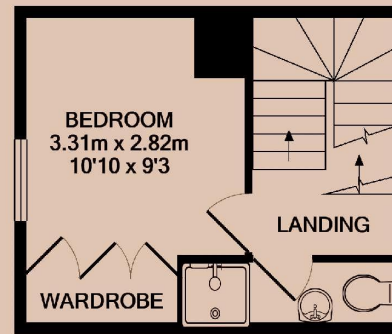
**Council Tax Band**  
A

**ID**  
#15219

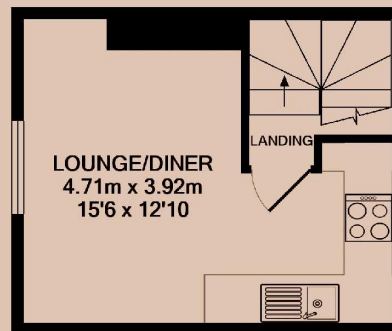
**Updated**  
06/11/2024



GROUND FLOOR



1ST FLOOR



2ND FLOOR

# *Have a property like this? Let's work together.*

Design and marketing are at the heart of our approach. With most people now looking for property online, we can get our clients' properties in front of as many people as the most prominent national agents. Where we differ is in the quality of our work. We create stunning digital particulars that highlight the individual attributes of every property we market, with videos and floor plans as standard.



**OUR OFFICE**  
7 Biggin Street  
Loughborough, LE11 1UA

**CONTACT US**  
01509 320 320  
let@huntleys.net



# Huntleys

