

Student

Sovereign Court

Loughborough

2 Bed 2nd Floor Apartment • LE11 2TL • £107 pppw • £300 Deposit Per Person



Sovereign Court, Loughborough

A TWO BEDROOM ground floor apartment for STUDENTS. Situated close to the TOWN CENTRE and the UNIVERSITY. This property comes FULLY FURNISHED with kitchen APPLIANCES. Available for the 2026 - 2027 academic year. Sorry, bills are not included.

Lounge

Open to the kitchen/diner, a sizeable lounge including main furniture.

Kitchen / Diner

A modern L-shaped kitchen large enough to be used as a diner too, open to the lounge. This kitchen comes with appliances pictured, as well as a table and chairs.

Master Bedroom

The larger of the two bedrooms. A double bedroom, including main furniture.

Bedroom Two

A second double bedroom, including main furniture.

Bathroom

A neutral three piece bathroom, including a bath, sink, toilet, and shower above the bath.

Parking

No allocated parking, occupiers must make their own parking arrangements with town car parks or nearby streets.

Utilities

Sorry, bills not included.

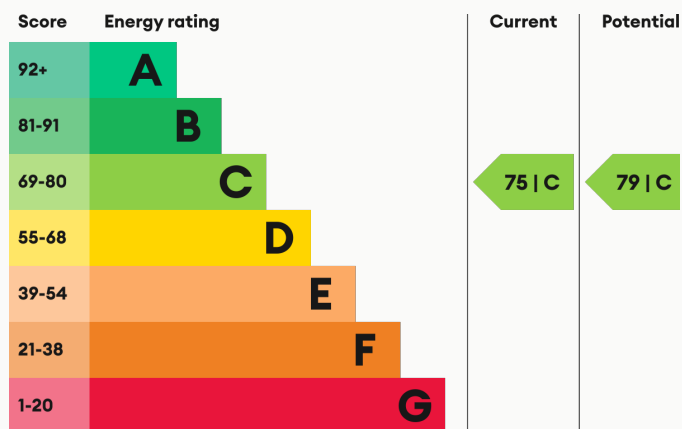
Heating

Gas-fired central heating.

Glazing

Modern, good quality, uPVC double glazing.

Energy Performance



We aim to make our particulars both accurate and reliable. However they are not guaranteed; nor do they form part of an offer or contract. If you require clarification on any points then please contact us, especially if you are traveling some distance to view. All measurements are to widest point.



Kitchen - Diner



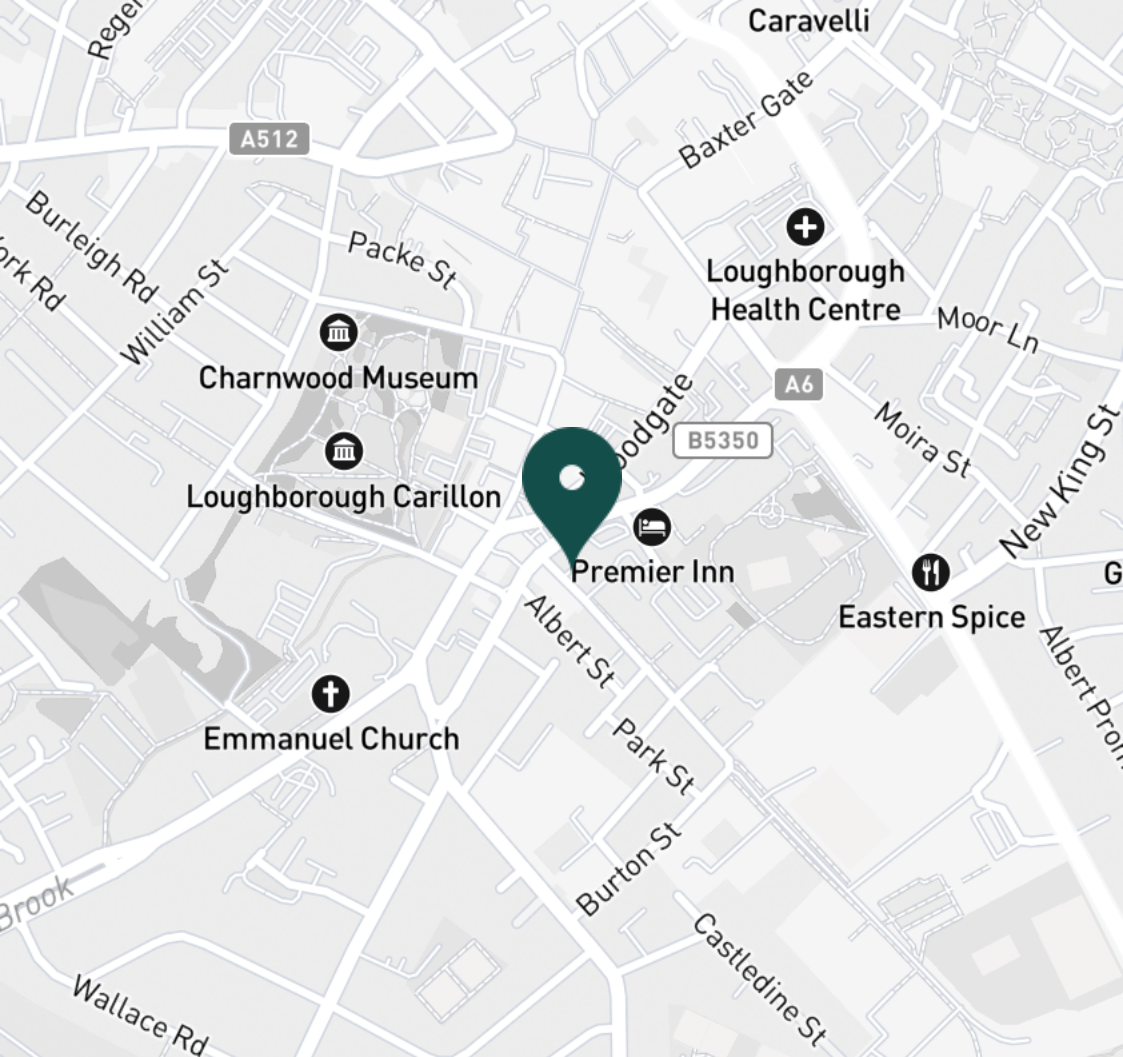
Lounge



Lounge



Kitchen



SUPERMARKETS

Sainsburys Loughborough	0.8 mi
Tesco Superstore Loughborough	0.8 mi
Marks & Spencer	0.8 mi
Tesco Extra Loughborough	1.1 mi
Lidl Loughborough	1.2 mi

GYMS

Fit4Less	0.4 mi
Dynamite Gym Ltd	0.5 mi
Anytime Fitness Loughborough	0.9 mi
PureGym Loughborough	1.0 mi
Radmoor Centre	1.0 mi

TRAIN STATIONS

Loughborough	1.4 mi
Barrow upon Soar	3.8 mi
Sileby	5.7 mi
Syston	10.0 mi
South Wigston	10.9 mi

NURSERY SCHOOLS

Westwards Nursery	0.2 mi
Emmanuel PS	0.3 mi
Parkside PS	0.6 mi
Small World Nursery	0.7 mi
Busy Bees in Loughborough	0.8 mi

PRIMARY SCHOOLS

Loughborough High Sch	0.3 mi
Our Lady's Convent Sch	0.4 mi
Sacred Heart Catholic PS	0.7 mi
Loughborough CE PS	0.8 mi
Mountfields Lodge Sch	0.8 mi

HIGH SCHOOLS

Loughborough High Sch	0.3 mi
Our Lady's Convent Sch	0.4 mi
RNIB College Loughborough	0.9 mi
Loughborough College	1.0 mi
Loughborough Grammar Sch	1.0 mi

Discover
Loughborough



- ✓ Ground Floor Apartment
- ✓ For Students
- ✓ Furnished
- ✓ Close to University
- ✓ Close to Town
- ✓ 2026 - 2027 Academic Year





Master Bedroom



Bedroom Two



Bedroom Two



Bathroom



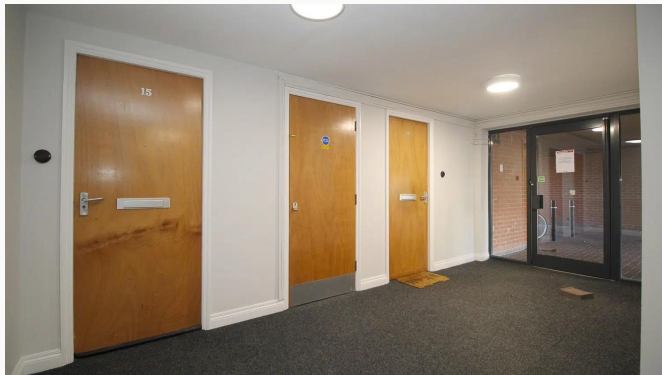
Hallway



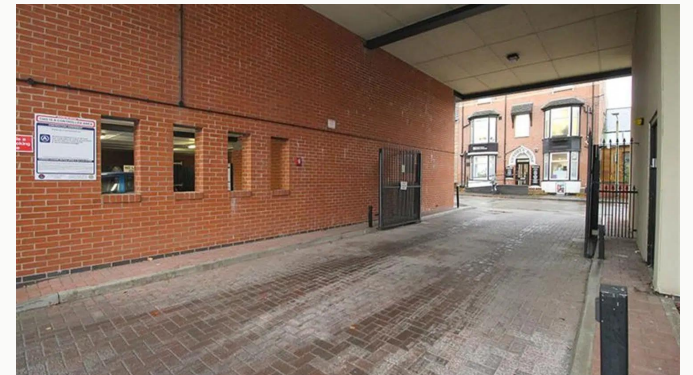
Hallway



Sovereign Court



Block Entrance



Sovereign Court

Available
From 01/07/2026

Comes
Furnished

Bedrooms
2

Receptions
1

Bathrooms
1

Parking
Ask Agent

Postcode
LE11 2TL

Rent
£107 pppw

Deposit
£600

EPC
75 | C

Council Tax Band
B

ID
#18262

Updated
20/02/2026



Have a property like this? Let's work together.

Design and marketing are at the heart of our approach. With most people now looking for property online, we can get our clients' properties in front of as many people as the most prominent national agents. Where we differ is in the quality of our work. We create stunning digital particulars that highlight the individual attributes of every property we market, with videos and floor plans as standard.



OUR OFFICE
7 Biggin Street
Loughborough, LE11 1UA

CONTACT US
01509 320 320
let@huntleys.net

