



Chestnut Place

Barrow-Upon-Soar

2 Bed 2nd Floor Apartment • LE12 8GW • £775 pcm • £890 Deposit



Chestnut Place, Barrow-Upon-Soar

Now available to let in Barrow-Upon-Soar. A two-bedroom, second floor apartment presented in excellent condition. This unfurnished apartment comes with two bedrooms, sizeable lounge and kitchen. Included is allocated parking within Chestnut Place car park.

Lounge

A neutral and sizeable lounge overlooking the block car park.

Kitchen

A practical U-shaped kitchen including a built-in breakfast bar/dining table. This kitchen also comes equipped with a fridge, freezer, washing machines, oven, and hob.

Master Bedroom

The larger of the two bedrooms. This double bedroom comes with a built-in wardrobe for storage.

Bedroom Two

A second bedroom, that could also be used as a study.

Bathroom

A three piece modern bathroom, including a bath, sink, toilet and shower above the bath.

Parking

Allocated parking available for one car within the block car park. Further parking available on nearby roads.

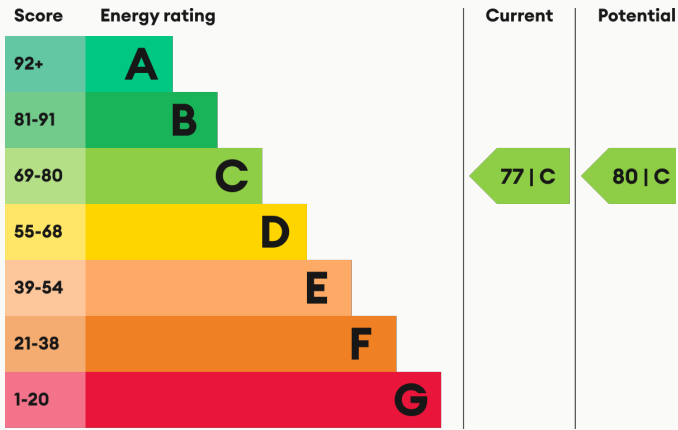
Heating

Electric heaters throughout.

Glazing

Modern, good quality, uPVC double glazing.

Energy Performance



We aim to make our particulars both accurate and reliable. However they are not guaranteed; nor do they form part of an offer or contract. If you require clarification on any points then please contact us, especially if you are traveling some distance to view. All measurements are to widest point.



Lounge



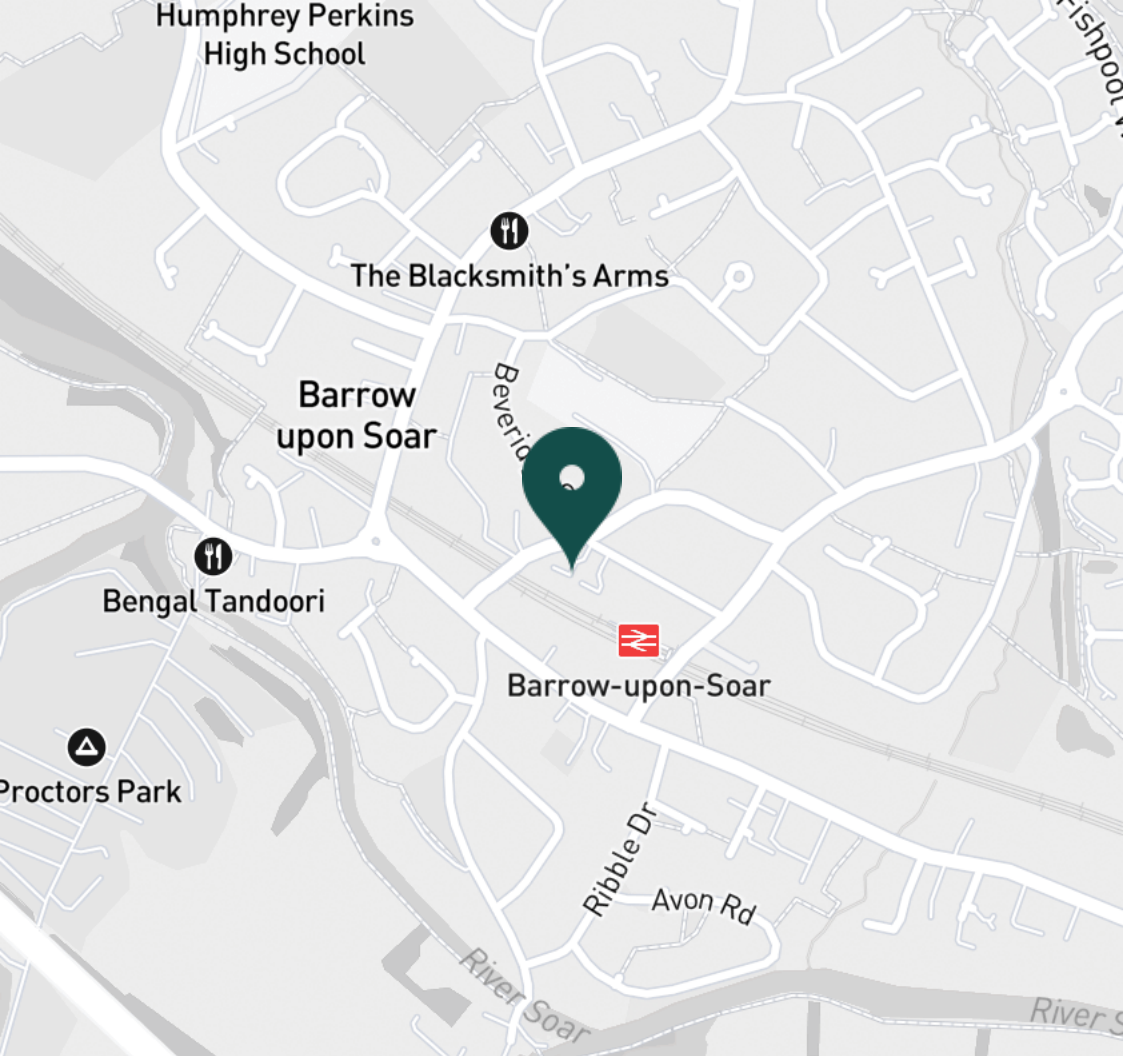
Lounge



Lounge



Kitchen



SUPERMARKETS

| | |
|-------------------------------|--------|
| Co-op Food Barrow Upon Soar | 0.3 mi |
| Co-op Food Quorn | 2.2 mi |
| Waitrose Mountsorrel | 2.6 mi |
| Tesco Extra Loughborough | 3.4 mi |
| Tesco Superstore Loughborough | 4.4 mi |

GYMS

| | |
|------------------------------|--------|
| Physfit Gyms | 2.1 mi |
| Total Fitness Centre | 2.2 mi |
| Rosemary Conley Fitness Club | 2.4 mi |
| Quorn Grange Hotel | 2.6 mi |
| Onestep fitness | 2.9 mi |

TRAIN STATIONS

| | |
|------------------|--------|
| Barrow upon Soar | 0.2 mi |
| Sileby | 2.3 mi |
| Loughborough | 3.8 mi |
| Syston | 7.7 mi |
| South Wigston | 8.6 mi |

NURSERY SCHOOLS

| | |
|-----------------------|--------|
| Sileby Littlestars PS | 2.3 mi |
| Peter Pan Playgroup | 2.3 mi |
| Quorn Nursery School | 2.3 mi |
| Radmoor Nursery | 2.4 mi |
| Radmoor Nursery | 2.4 mi |

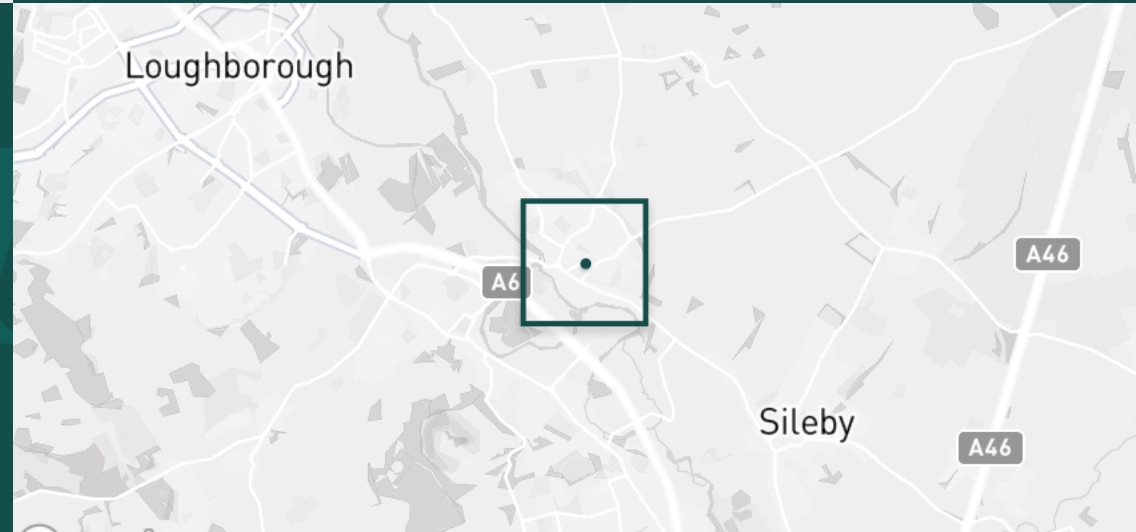
PRIMARY SCHOOLS

| | |
|------------------------------|--------|
| Hall Orchard CE PS | 0.1 mi |
| St Bartholomew's CE PS | 2.3 mi |
| Redlands Community PS | 2.4 mi |
| Burton-on-the-Wolds PS | 2.6 mi |
| Christ Church & St Peters CE | 2.9 mi |

HIGH SCHOOLS

| | |
|---------------------------|--------|
| Humphrey Perkins High Sch | 0.6 mi |
| Rawlins Academy | 2.3 mi |
| Loughborough Grammar Sch | 3.6 mi |
| Loughborough High Sch | 3.6 mi |
| Our Lady's Convent Sch | 3.8 mi |

Discover
Barrow-Upon-Soar



- ✓ Excellent Condition
- ✓ Available Now
- ✓ Two Bedrooms
- ✓ Appliances Included
- ✓ Village Location
- ✓ Allocated Parking





Kitchen



Kitchen



Master Bedroom



Master Bedroom



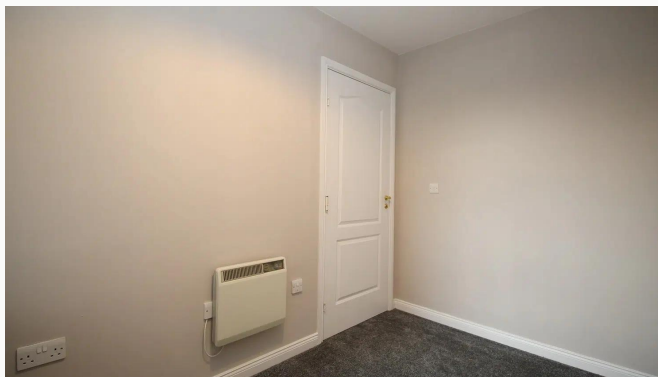
Master Bedroom



Master Bedroom



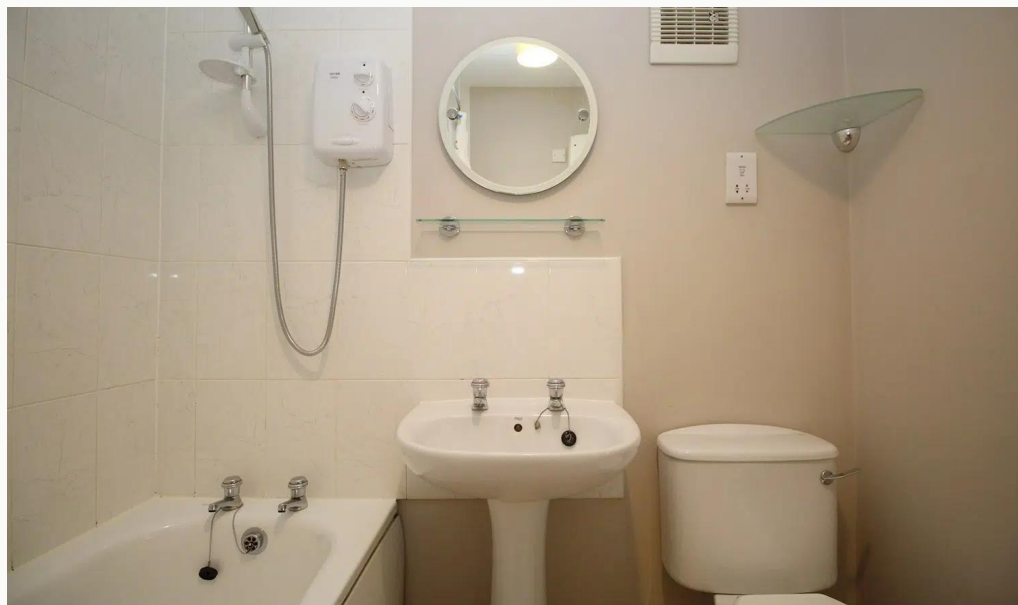
Bedroom Two



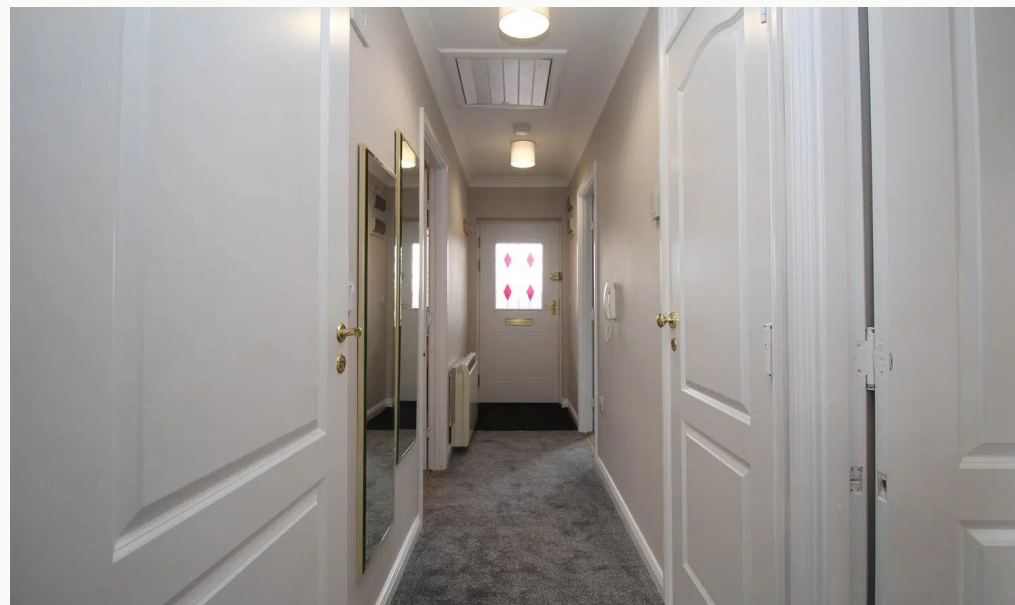
Bedroom Two



Bathroom



Bathroom



Hallway



Entrance



Car Park



Chestnut Place



Chestnut Place

Available
From 14/04/2025

Comes
Unfurnished

Bedrooms
2

Receptions
1

Bathrooms
1

Parking
Allocated

Postcode
LE12 8GW

Rent
£775 pcm

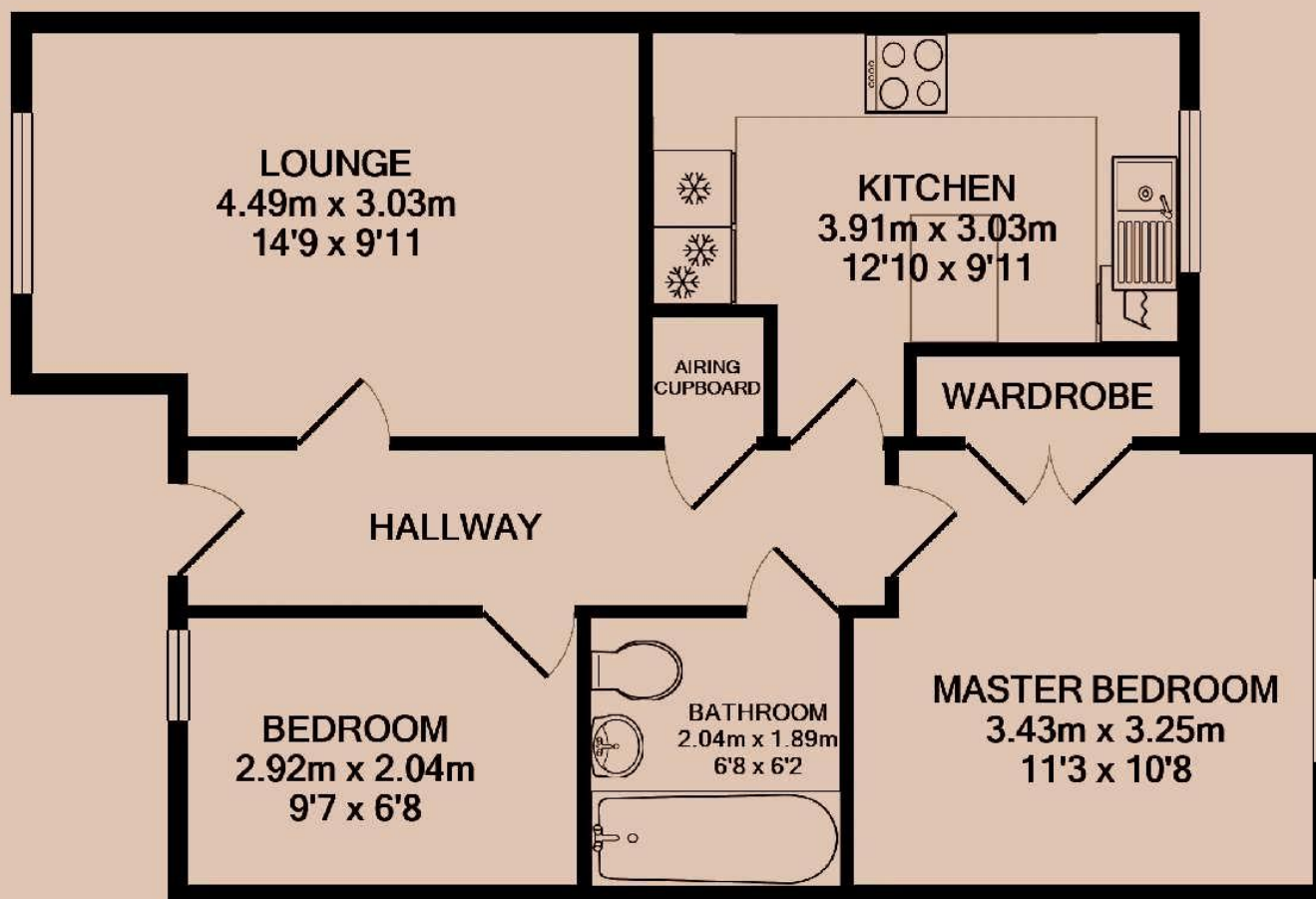
Deposit
£890

EPC
77 | C

Council Tax Band
B

ID
#16326

Updated
14/04/2025



Have a property like this? Let's work together.

Design and marketing are at the heart of our approach. With most people now looking for property online, we can get our clients' properties in front of as many people as the most prominent national agents. Where we differ is in the quality of our work. We create stunning digital particulars that highlight the individual attributes of every property we market, with videos and floor plans as standard.



OUR OFFICE
7 Biggin Street
Loughborough, LE11 1UA

CONTACT US
01509 320 320
let@huntleys.net

