



Highland Drive
Loughborough

3 Bed Terraced Townhouse • LE11 2HT • £1,100 pcm • £1,260 Deposit



Highland Drive, Loughborough

From the five-star homebuilder William Davis, this like new property is ready for occupation. The spacious kitchen has gas hob. Its Master bedroom features an en-suite and fitted wardrobe. A further two double bedrooms and an elegant bathroom, complemented by a downstairs cloakroom and garage. The first floor lounge makes for a great living area.

Living and Dining room 4.3m (14'1) x 3.5m (11'6)

Situated on the first floor with both windows and a Juliet style balcony to the front of the property. This room has a bright modern feel.

Kitchen + Breakfast room 4.2m (13'9) x 2.5m (8'2)

A beautiful contemporary kitchen. Stainless steel integrated oven, gas hob and extractor hood. A fridge freezer is also hidden away behind the gloss white cabinets. Spotlights and modern flooring complete the look.

Master bedroom 4.2m (13'9) x 3.5m (11'6)

A great size master room, situated on the top floor, with fitted wardrobes, and an en suite shower room.

Bedroom Two 3.5m (11'6) x 2.6m (8'6)

A good size double room with views to the rear. Situated on the top floor.

Bedroom Three 3.5m (11'6) x 2.6m (8'6)

This room runs the full width of the house with French doors to the rear affording views of the garden.

Bathroom 2.5m (8'2) x 2.3m (7'7)

A centrally located family bathroom with three-piece bathroom complete with shower over the bath, heated towel rail and smart tiling.

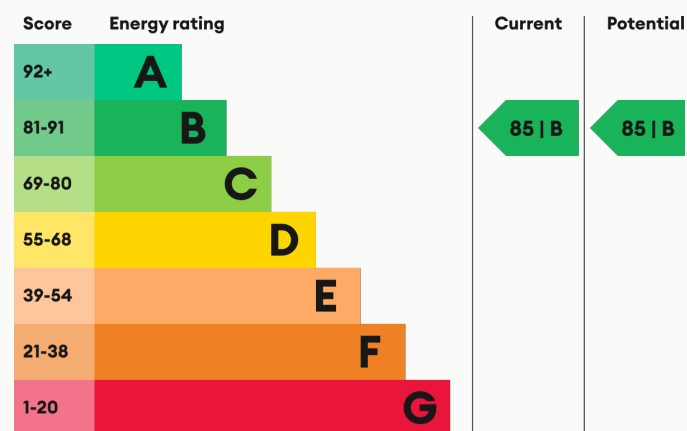
Heating

Gas fired central heating.

Glazing

Modern, good quality, uPVC double glazing.

Energy Performance



We aim to make our particulars both accurate and reliable. However they are not guaranteed; nor do they form part of an offer or contract. If you require clarification on any points then please contact us, especially if you are traveling some distance to view. All measurements are to widest point.



Kitchen



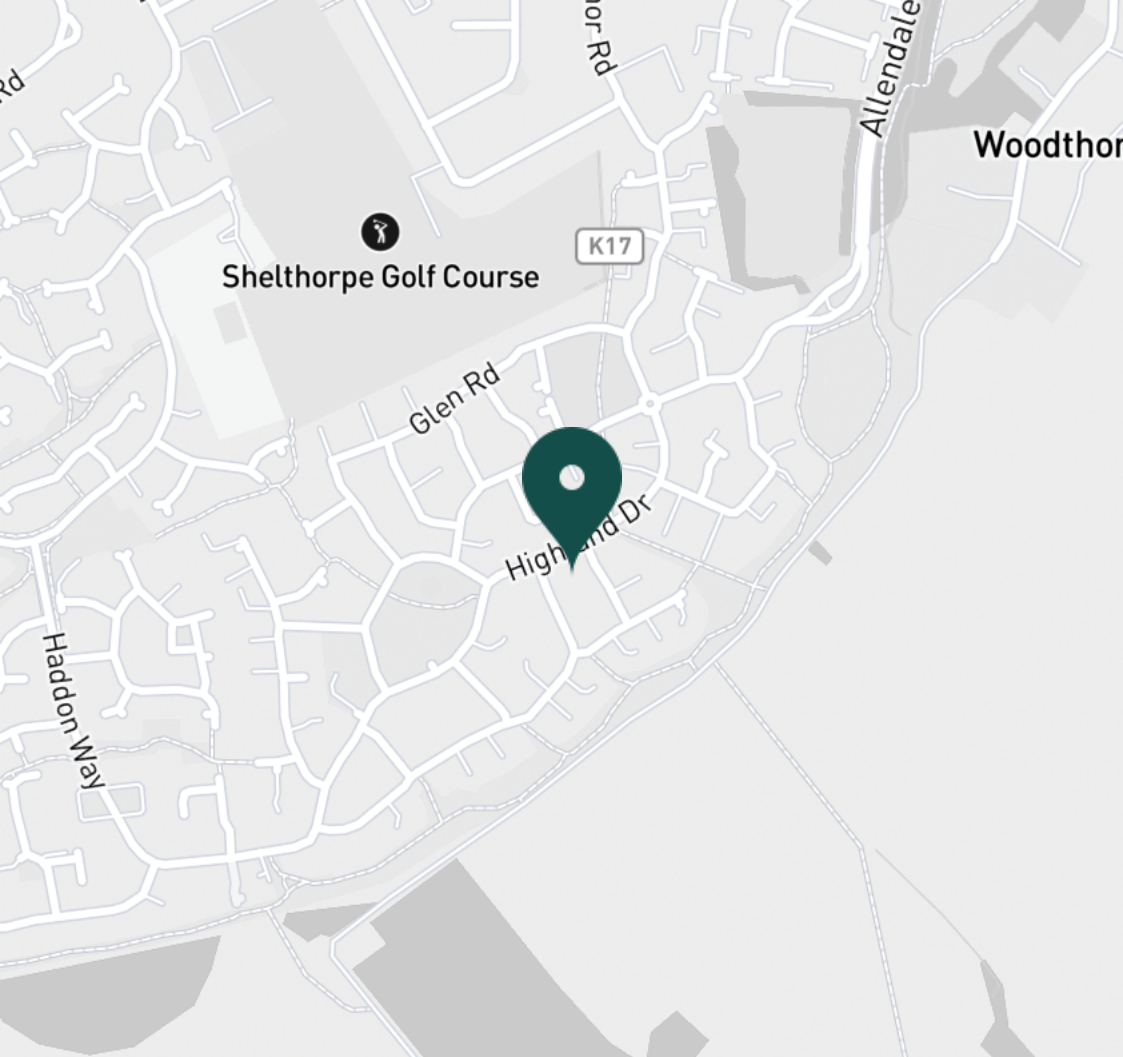
Ground Floor Bedroom



Ground Floor Bedroom



Ground Floor Toilet



SUPERMARKETS

Tesco Extra Loughborough	1.4 mi
Co-op Food Quorn	1.9 mi
Sainsburys Loughborough	2.4 mi
Tesco Superstore Loughborough	2.5 mi
Marks & Spencer	2.5 mi

GYMS

Fit4Less	2.0 mi
Radmoor Centre	2.2 mi
Dynamite Gym Ltd	2.3 mi
Loughborough University Pool	2.3 mi
Rosemary Conley Fitness Club	2.4 mi

TRAIN STATIONS

Barrow upon Soar	3.2 mi
Loughborough	3.6 mi
Sileby	5.0 mi
Syston	9.1 mi
South Wigston	10.3 mi

NURSERY SCHOOLS

Parkside PS	1.5 mi
Shelthorpe Childrens Centre	1.5 mi
Westwards Nursery	1.7 mi
Quorn Nursery School	2.1 mi
Emmanuel PS	2.1 mi

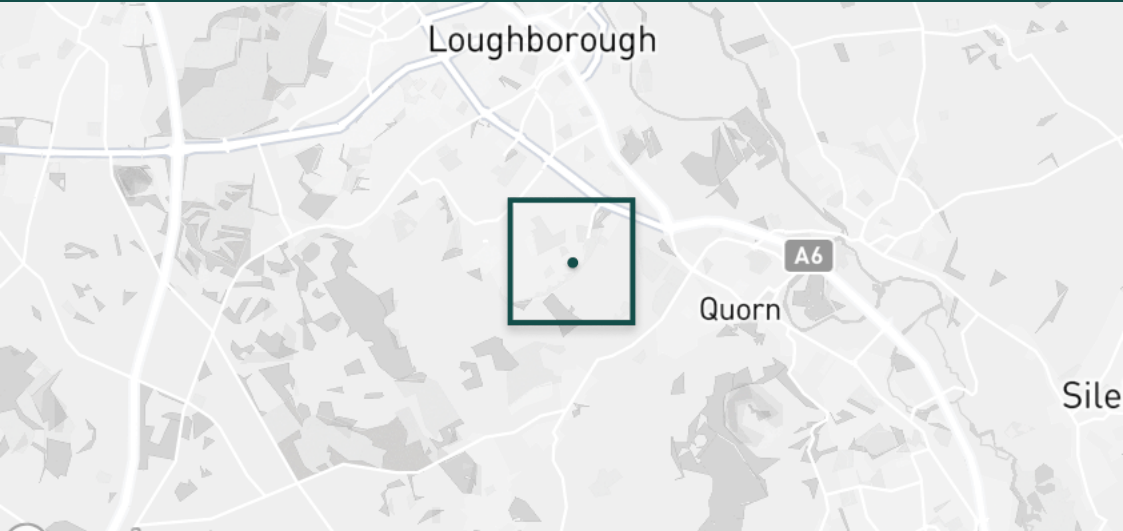
PRIMARY SCHOOLS

Outwoods Edge PS	1.0 mi
Beacon Primary Academy	1.5 mi
Sacred Heart Catholic PS	1.6 mi
Our Lady's Convent Sch	1.7 mi
Mountfields Lodge Sch	1.9 mi

HIGH SCHOOLS

Woodbrook Vale	1.0 mi
Our Lady's Convent Sch	1.7 mi
Rawlins Academy	2.0 mi
Loughborough Grammar Sch	2.1 mi
Loughborough College	2.2 mi

Discover
Loughborough





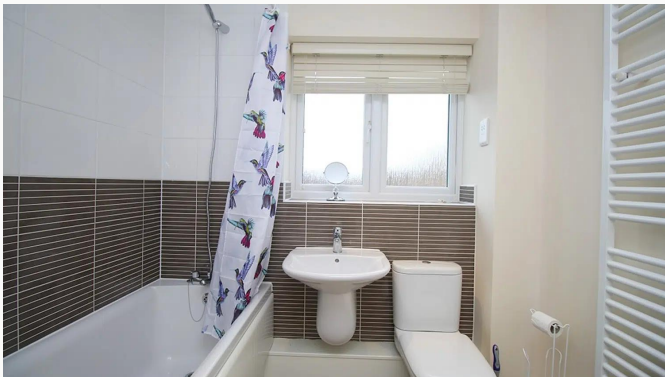
Living Area



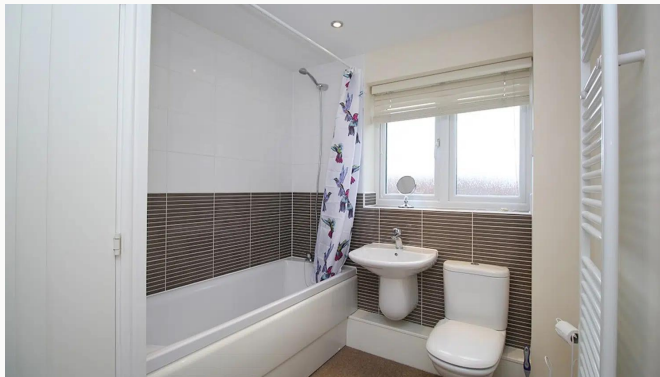
Living Area



Living Area



Bathroom



Bathroom



Master Bedroom



Master Bedroom



Master Bedroom



Ensuite



Ensuite



Bedroom



Bedroom



Bedroom



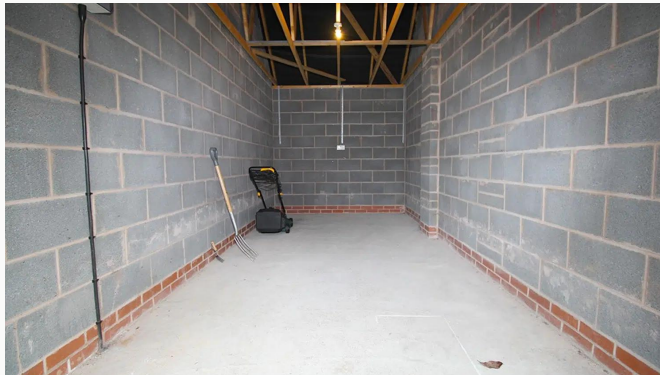
Bedroom



Landing



Garden



Garage



Highland Drive

Available
From 02/11/2024

Comes
Unfurnished

Bedrooms
3

Receptions
1

Bathrooms
1

Parking
Driveway

Postcode
LE11 2HT

Rent
£1,100 pcm

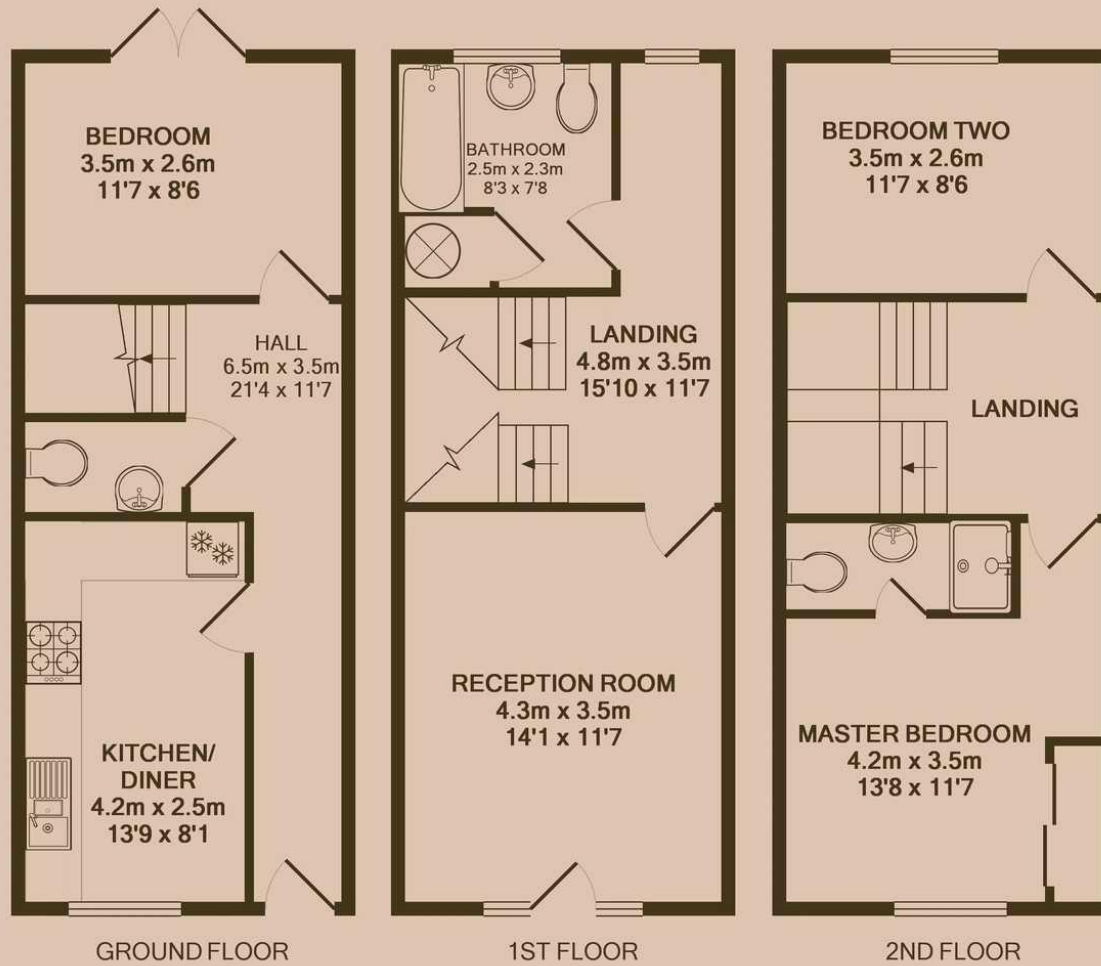
Deposit
£1,260

EPC
85 | B

Council Tax Band
D

ID
#2224

Updated
10/10/2024



Have a property like this? Let's work together.

Design and marketing are at the heart of our approach. With most people now looking for property online, we can get our clients' properties in front of as many people as the most prominent national agents. Where we differ is in the quality of our work. We create stunning digital particulars that highlight the individual attributes of every property we market, with videos and floor plans as standard.



OUR OFFICE
7 Biggin Street
Loughborough, LE11 1UA

CONTACT US
01509 320 320
let@huntleys.net



Huntleys

