



Murdoch Rise
Loughborough

3 Bed Semi-Detached House • LE11 5YL • £1,100 pcm • £1,260 Deposit



Murdoch Rise, Loughborough

A well presented three bedroom semi-detached family home situated on a quiet cul-de-sac. The property benefits from an open plan lounge / diner with patio doors affording views of the gated garden. It has three bedrooms, two reception rooms and a galley kitchen. This smart modern house is a great choice for families. Windows and external doors were replaced in December 2025.

Kitchen 3.21m (10'6) x 2.43m (8')

A galley style kitchen which includes electric oven and gas hob with extractor hood, fridge freezer and space for washing machine. This well arranged space provides a practical cooking area. There is also a pantry under the stairs and door to the rear garden.

Lounge 3.68m (12'1) x 3.68m (12'1)

A contemporary decorated, spacious and light lounge. Open plan to the dining room. Available with or without the furniture pictured.

Dining room 3.32m (10'11) x 3m (9'10)

Open plan to the lounge with glazed patio doors affording views of the garden. Available with or without the furniture pictured.

Master Bedroom 3.7m (12'2) x 3.03m (9'11)

A large double bedroom overlooking the front of the property.

Bedroom Two 3.21m (10'6) x 2.9m (9'6)

A well proportioned double bedroom overlooking the rear garden.

Bedroom Three 2.7m (8'10) x 2.45m (8'0)

A single bedroom with a cupboard over the stairs.

Bathroom 2.3m (7'7) x 2.05m (6'9)

Situated on the first floor this four piece family bathroom comes complete with a large corner bath and separate shower.

Garden

A well presented and gated rear garden. Part paved with the rest laid to lawn.

Garage

Clean, dry with both power and lighting.

Parking

Parking on drive for up to three cars, in tandem, with further parking available on road, without restriction.

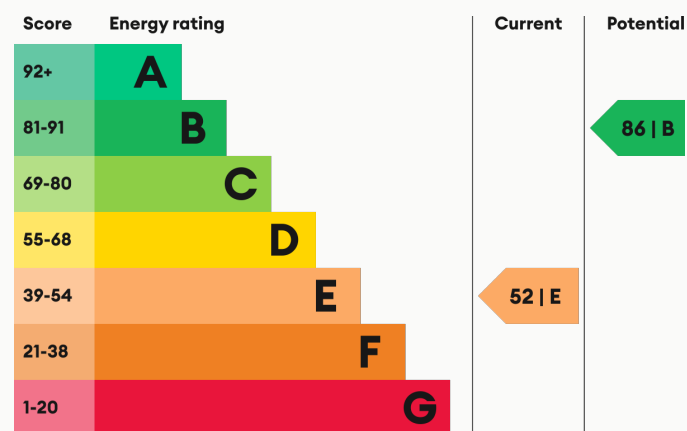
Central Heating

Gas fired central heating.

Glazing

Full Upvc double glazing.

Energy Performance



We aim to make our particulars both accurate and reliable. However they are not guaranteed; nor do they form part of an offer or contract. If you require clarification on any points then please contact us, especially if you are traveling some distance to view. All measurements are to widest point.



Lounge



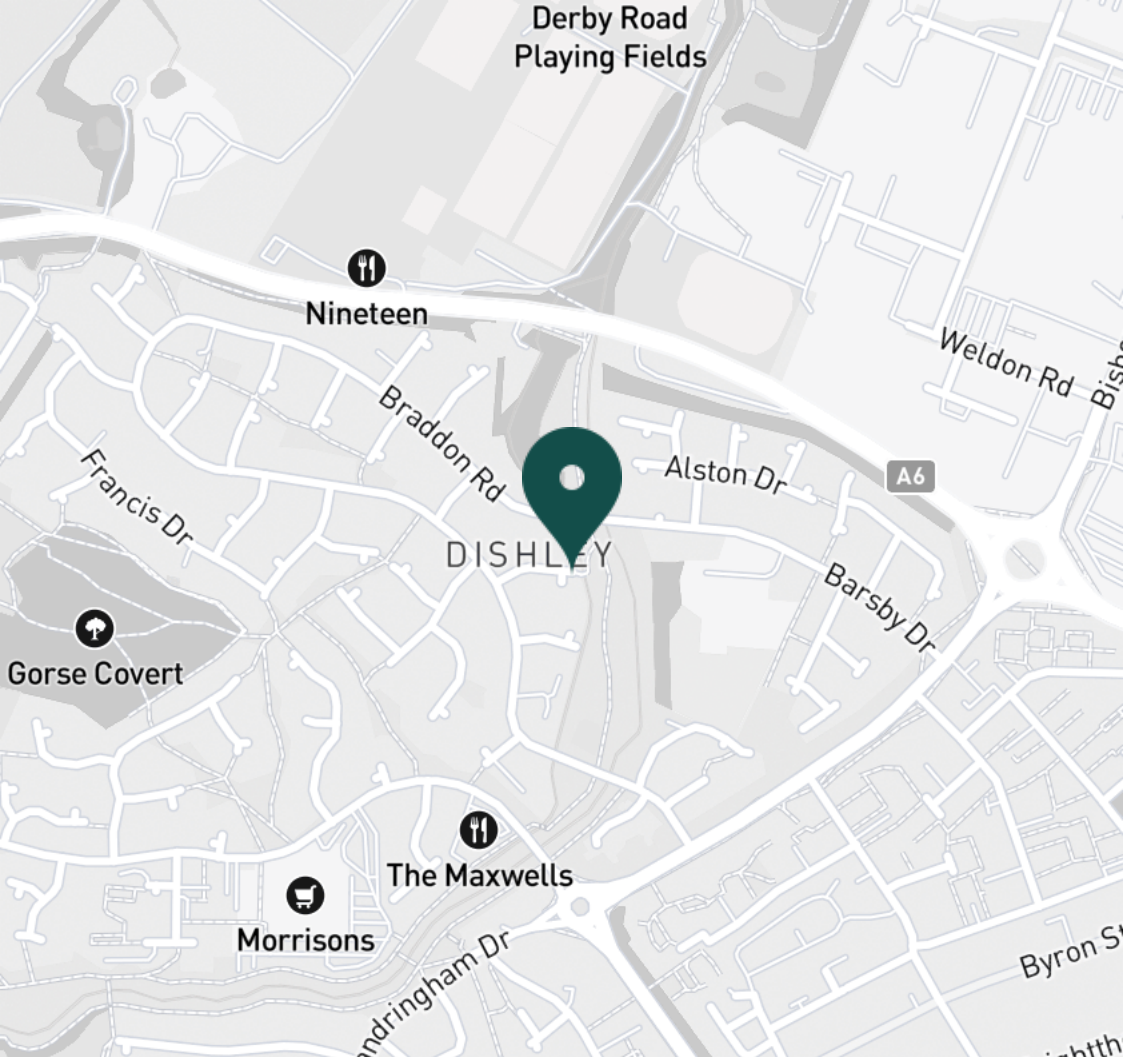
Dining room



Kitchen



Kitchen



SUPERMARKETS

Co-op Food Knightthorpe Rd	0.6 mi
Morrisons Loughborough	0.7 mi
Lidl Loughborough	1.3 mi
Aldi Loughborough	1.5 mi
Tesco Superstore Loughborough	1.6 mi

GYMS

Loughborough University Pool	1.3 mi
Loughborough Sport	1.4 mi
Radmoor Centre	1.4 mi
Anytime Fitness Loughborough	1.6 mi
PureGym Loughborough	1.7 mi

TRAIN STATIONS

Loughborough	2.3 mi
Barrow upon Soar	5.2 mi
Sileby	7.1 mi
East Midlands Parkway	9.4 mi
Syston	11.4 mi

NURSERY SCHOOLS

Robert Bakewell Playgroup	0.4 mi
Little House Day Nursery	1.0 mi
Kingscliffe Day Nursery	1.4 mi
Loughborough Campus Nursery	1.4 mi
Charnwood College Playgroup	1.5 mi

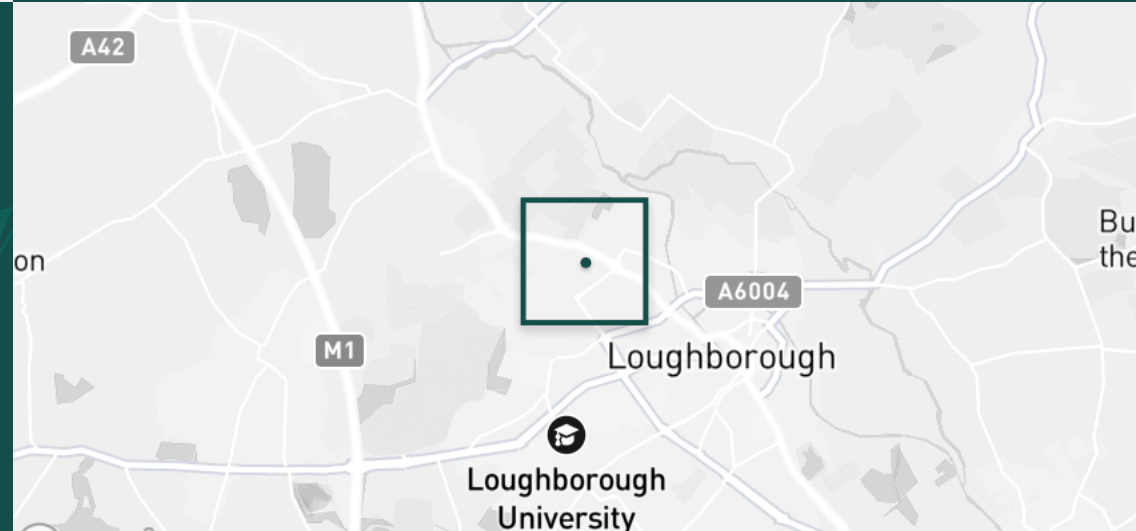
PRIMARY SCHOOLS

Robert Bakewell PS	0.4 mi
Thorpe Acre Junior Sch	1.2 mi
Stonebow County PS	1.3 mi
Ashmount Sch	1.5 mi
St Marys Catholic PS	1.5 mi

HIGH SCHOOLS

The Garendon High Sch	1.3 mi
De Lisle Catholic Science C	1.3 mi
Loughborough College	1.4 mi
Lboro Uni School Of The Arts	1.4 mi
Charnwood College	1.5 mi

Discover
Loughborough





Master Bedroom



Master Bedroom



Bedroom Two



Bedroom Two



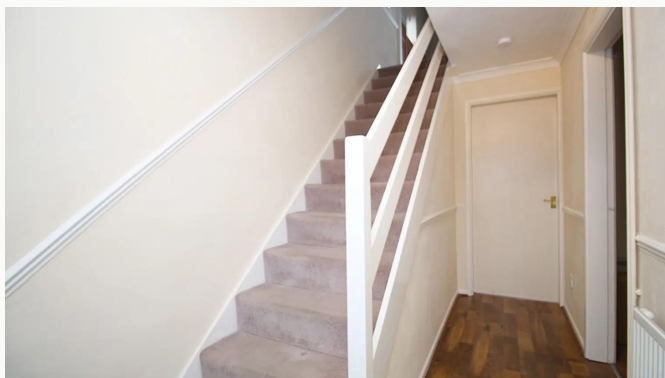
View



Bathroom



Bathroom



Entrance Hall



Bedroom Three



Garden and patio



Garage



Murdoch Rise



Street scene



Area

Available
From 09/03/2026

Comes
Unfurnished

Bedrooms
3

Receptions
2

Bathrooms
1

Parking
Off road

Postcode
LE11 5YL

Rent
£1,100 pcm

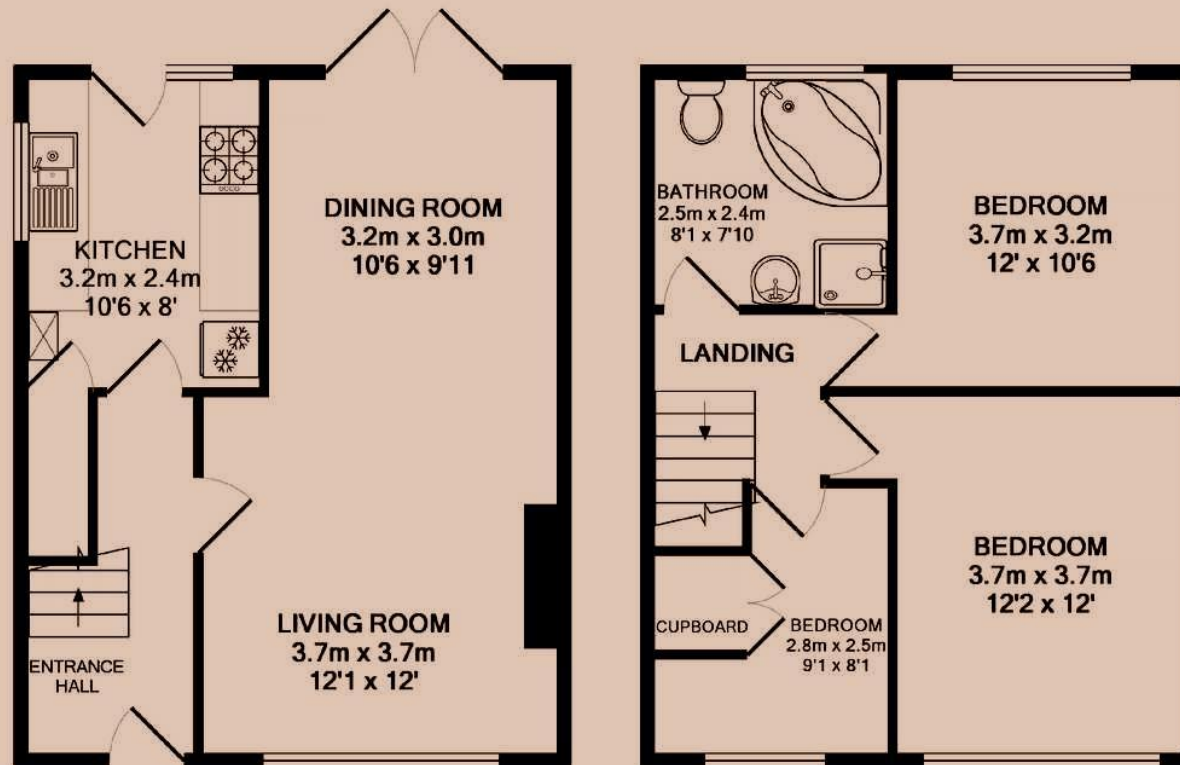
Deposit
£1,260

EPC
52 | E

Council Tax Band
C

ID
#167

Updated
19/03/2026



GROUND FLOOR

1ST FLOOR

Have a property like this? Let's work together.

Design and marketing are at the heart of our approach. With most people now looking for property online, we can get our clients' properties in front of as many people as the most prominent national agents. Where we differ is in the quality of our work. We create stunning digital particulars that highlight the individual attributes of every property we market, with videos and floor plans as standard.



OUR OFFICE
7 Biggin Street
Loughborough, LE11 1UA

CONTACT US
01509 320 320
let@huntleys.net

