



# *Glebe Close*

## Mountsorrel

2 Bed Terraced House • LE12 7JZ • £900 pcm • £1,030 Deposit





## Glebe Close, Mountsorrel

Presented in fantastic condition, a terraced, two-bedroom house situated on a quiet cul-de-sac in Mountsorrel. This property comes with a cosy lounge, practical U-shaped kitchen, two bedrooms and modern bathroom. To the rear is a pleasant garden. To the front of the house is a driveway for parking. Appliances included. Furniture optional. Now available to let.

### Lounge

A sizeable and neutral lounge set at the front of the property. Open staircase gives access to the first floor. Some furniture included, TV not included.

### Kitchen

A U-shaped kitchen in great condition. A washing machine, dishwasher, fridge/freezer, cooker, and hob included. A breakfast bar and stools included. Overlooking and gives access to the rear garden.

### Master Bedroom

Overlooking Glebe Close, this double bedroom comes with furniture pictured and built-in storage.

### Bedroom Two

A second bedroom on the first floor, overlooking the rear garden.

### Bathroom

A newly refurbished bathroom, includes a bath, sink, toilet, and shower above the bath.

### Garden

Set to the rear of the house and accessed via the kitchen. This garden is mostly made up of lawn area.

### Parking

Driveway parking available to the front of the house.

### Heating

Gas-fired central heating.

### Glazing

Modern, good quality, uPVC double glazing.

### Energy Performance

Score	Energy rating	Current	Potential
92+	A		
81-91	B		89   B
69-80	C		
55-68	D	57   D	
39-54	E		
21-38	F		
1-20	G		

We aim to make our particulars both accurate and reliable. However they are not guaranteed; nor do they form part of an offer or contract. If you require clarification on any points then please contact us, especially if you are traveling some distance to view. All measurements are to widest point.





Lounge



Lounge

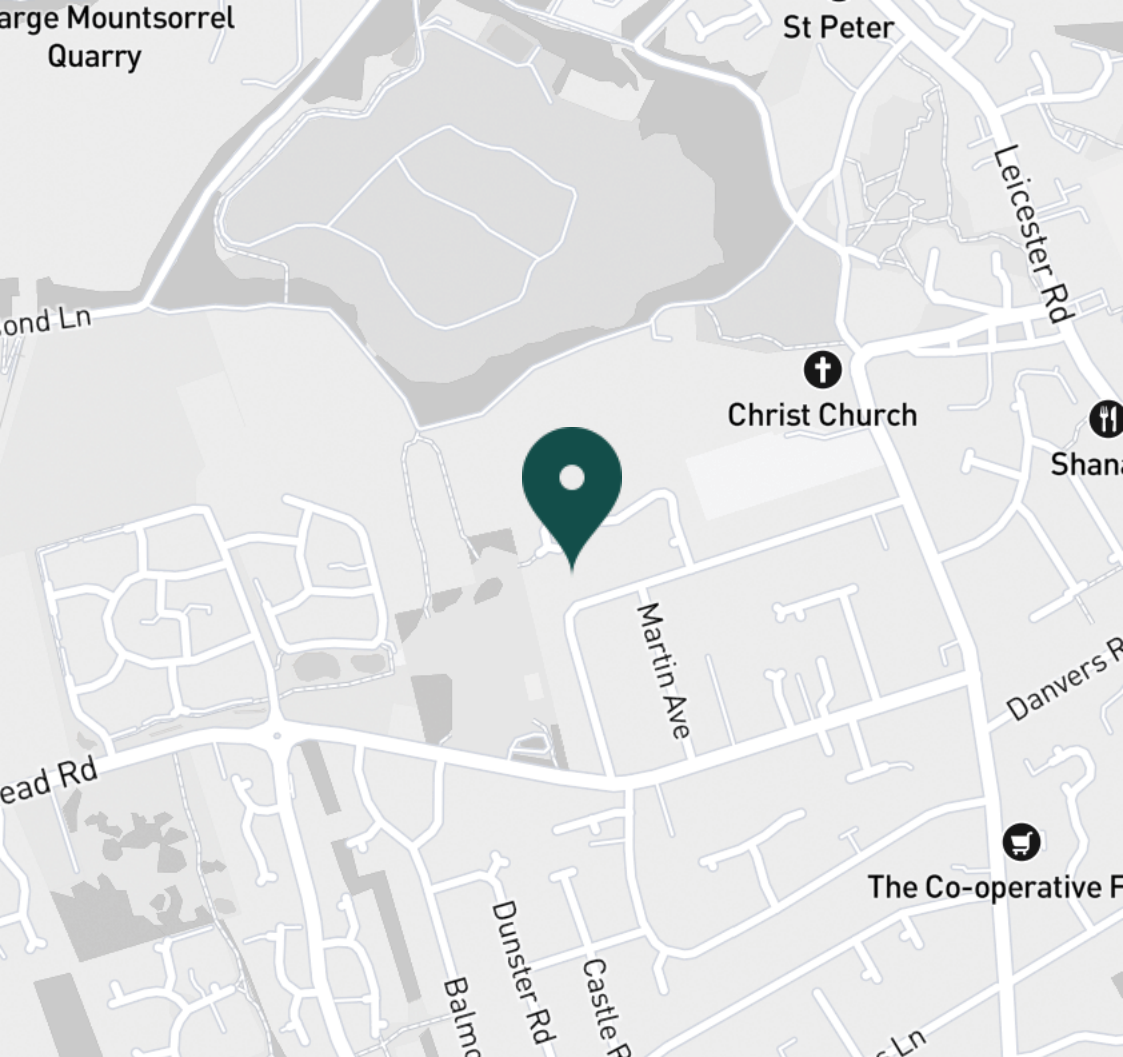


Lounge



Kitchen





#### SUPERMARKETS

Waitrose Mountsorrel	1.7 mi
Co-op Food Quorn	2.6 mi
Co-op Food Barrow Upon Soar	3.3 mi
Co-op Food Birstall	4.6 mi
Tesco Extra Loughborough	5.0 mi

#### GYMS

Onestep fitness	0.7 mi
bofitness	0.8 mi
Soar Valley Leisure Centre	1.1 mi
Quorn Grange Hotel	2.1 mi
Total Fitness Centre	2.3 mi

#### TRAIN STATIONS

Sileby	2.4 mi
Barrow upon Soar	3.3 mi
Syston	5.8 mi
Loughborough	6.1 mi
South Wigston	6.7 mi

#### NURSERY SCHOOLS

Castle View Day Nursery	0.9 mi
Rothley Park Kindergarten	1.2 mi
Quorn Grange Day Nursey	2.2 mi
Sileby Littlestars PS	2.4 mi
Peter Pan Playgroup	2.4 mi

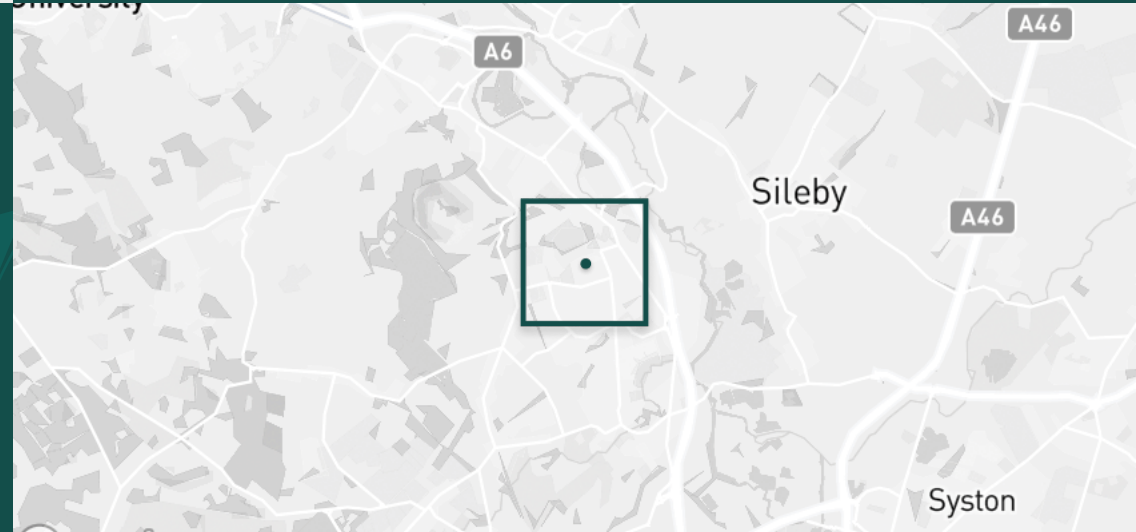
#### PRIMARY SCHOOLS

Christ Church & St Peters CE	0.4 mi
Rothley CE PS	1.9 mi
Redlands Community PS	2.5 mi
St Leonard's CE PS	2.6 mi
Newtown Linford PS	2.6 mi

#### HIGH SCHOOLS

Rawlins Academy	2.5 mi
Humphrey Perkins High Sch	3.7 mi
Loughborough Grammar Sch	5.1 mi
Loughborough High Sch	5.2 mi
Our Lady's Convent Sch	5.3 mi

Discover  
*Mountsorrel*





- ✓ Furniture Optional
- ✓ Appliances Included
- ✓ Available Now
- ✓ Excellent Condition
- ✓ Quiet Location
- ✓ Mountsorrel







Kitchen



Kitchen



Kitchen



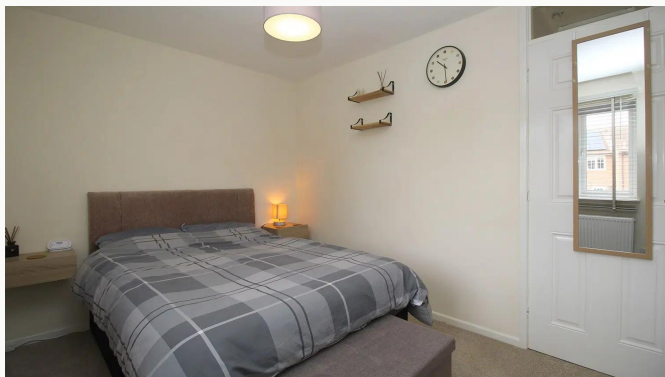
Master Bedroom



Master Bedroom



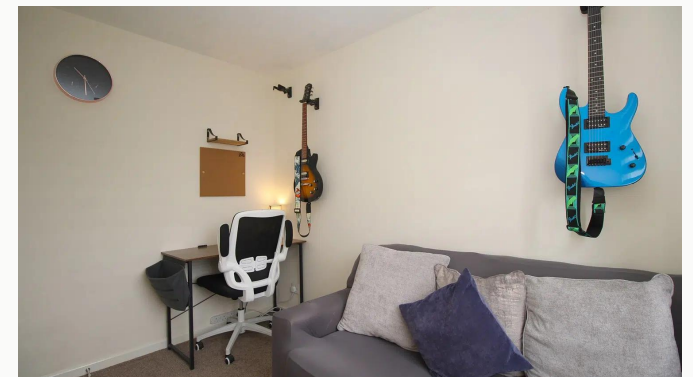
Master Bedroom



Master Bedroom



Bedroom Two



Bedroom Two





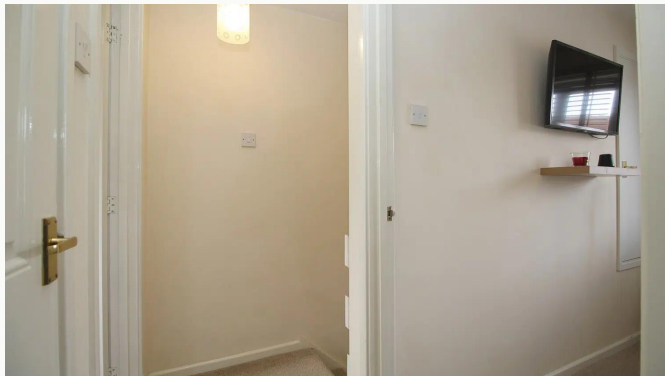
Bedroom Two



Bathroom



Bathroom



Landing



Garden



Garden



Garden



Garden



Entrance



**Available**  
From 28/07/2025

**Comes**  
Opt. Furnished

**Bedrooms**  
2

**Receptions**  
1

**Bathrooms**  
1

**Parking**  
Driveway

**Postcode**  
LE12 7JZ

**Rent**  
£900 pcm

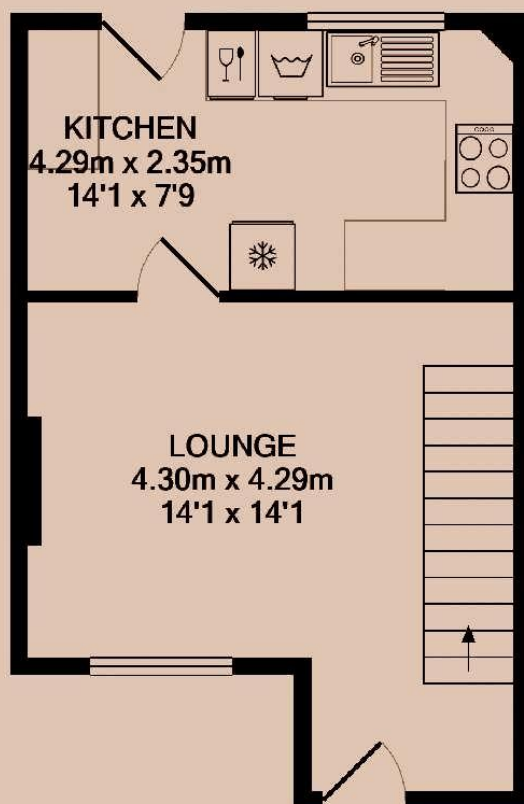
**Deposit**  
£1,030

**EPC**  
57 | D

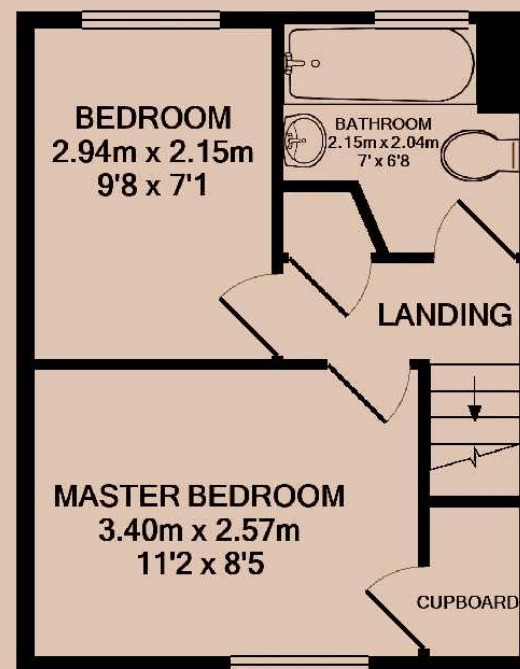
**Council Tax Band**  
B

**ID**  
#17240

**Updated**  
28/07/2025



GROUND FLOOR



1ST FLOOR



# *Have a property like this? Let's work together.*

Design and marketing are at the heart of our approach. With most people now looking for property online, we can get our clients' properties in front of as many people as the most prominent national agents. Where we differ is in the quality of our work. We create stunning digital particulars that highlight the individual attributes of every property we market, with videos and floor plans as standard.



**OUR OFFICE**  
7 Biggin Street  
Loughborough, LE11 1UA

**CONTACT US**  
01509 320 320  
let@huntleys.net

