



Schofield Road
Loughborough

1 Bed Room In A Shared House • LE11 4QH • £675 pcm • £770 Deposit



Schofield Road, Loughborough

A BEDROOM with an ENSUITE shower room. This room is presented in fantastic condition, as the property has recently been renovated throughout. The furniture and 4k TV pictured is included. The contemporary, shared kitchen comes with all necessary appliances. Sizeable garden to the rear of the property. Driveway parking available. Bills/Utilities INCLUDED. Available now.

The Bedroom

A double bedroom, fully refurbished, with new furniture, and 4k TV, set on the ground floor. Access to a contemporary ensuite shower room. One of six bedrooms at this property. Noted as "Bedroom One" on the floorplan.

Kitchen

A brand new extended, communal kitchen. This kitchen includes two ovens and two hobs, fridge/freezer, dishwasher, washing machine, and tumble dryer. Other smaller appliances are also available for residents use.

Ensuite

This bedroom comes with private access to the three piece shower room. This brand new washroom comes with a walk-in shower, sink, and toilet.

Garden

A good sized communal garden situated to the rear of the garde, for the residents use.

Parking

Communal driveway parking available for multiple cars.

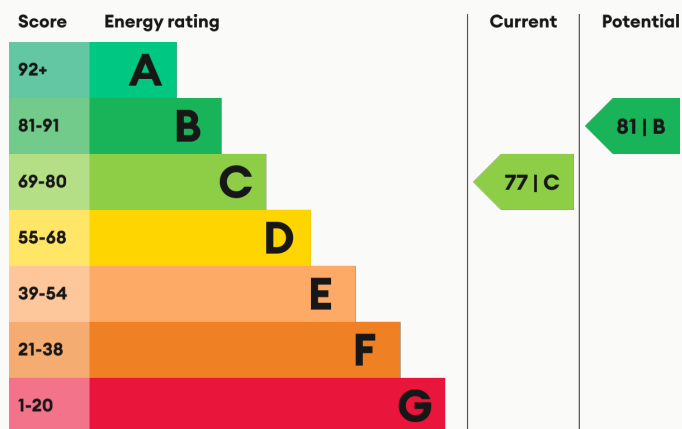
Heating

Gas-fired central heating.

Glazing

Modern, good quality, uPVC double glazing.

Energy Performance



We aim to make our particulars both accurate and reliable. However they are not guaranteed; nor do they form part of an offer or contract. If you require clarification on any points then please contact us, especially if you are traveling some distance to view. All measurements are to widest point.



Bedroom



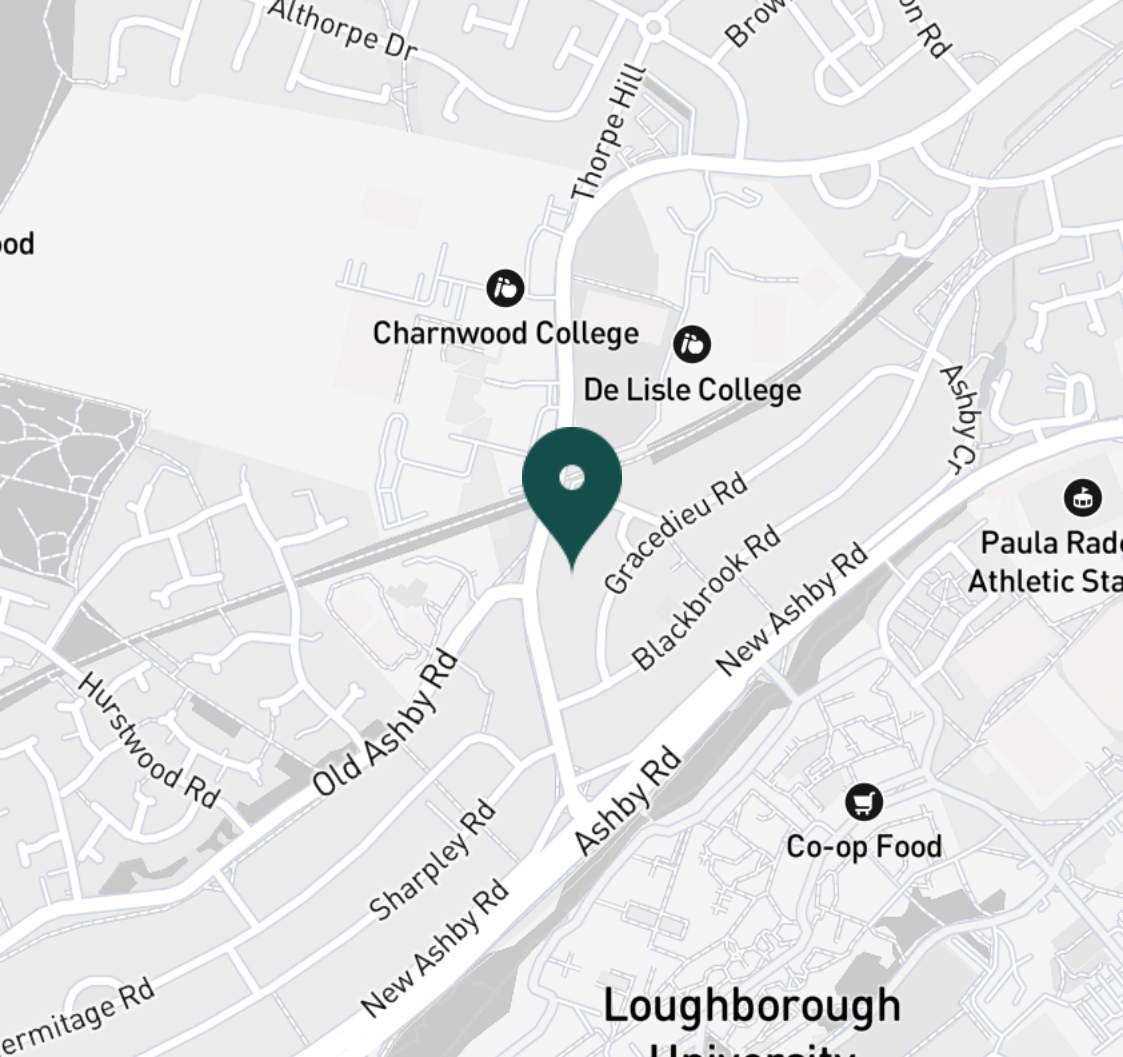
Bedroom



Ensuite



Ensuite



SUPERMARKETS

Co-op Food Knightthorpe Rd	0.7 mi
Morrisons Loughborough	1.3 mi
Lidl Loughborough	1.4 mi
Sainsburys Loughborough	1.6 mi
Aldi Loughborough	1.6 mi

GYMS

Holywell Fitness Centre	0.8 mi
Burleigh Springs Leisure Club	0.9 mi
Loughborough University Pool	1.1 mi
Loughborough Sport	1.2 mi
Radmoor Centre	1.2 mi

TRAIN STATIONS

Loughborough	2.4 mi
Barrow upon Soar	5.0 mi
Sileby	6.9 mi
East Midlands Parkway	10.6 mi
Syston	11.2 mi

NURSERY SCHOOLS

Charnwood College Playgroup	0.3 mi
Little House Day Nursery	0.7 mi
Kingscliffe Day Nursery	1.2 mi
Loughborough Campus Nursery	1.2 mi
Busy Bees in Loughborough	1.3 mi

PRIMARY SCHOOLS

Booth Wood PS	0.1 mi
Ashmount Sch	0.1 mi
Thorpe Acre Junior Sch	0.4 mi
St Marys Catholic PS	1.3 mi
Stonebow County PS	1.4 mi

HIGH SCHOOLS

Ashmount Sch	0.1 mi
De Lisle Catholic Science C	0.2 mi
The Garendon High Sch	0.2 mi
Charnwood College	0.3 mi
Loughborough College	1.2 mi

Discover
Loughborough



- ✓ Ensuite
- ✓ Room in a Shared House
- ✓ Refurbished Room
- ✓ Furnished
- ✓ Available Now
- ✓ **BILLS INCLUDED**





Kitchen



Kitchen



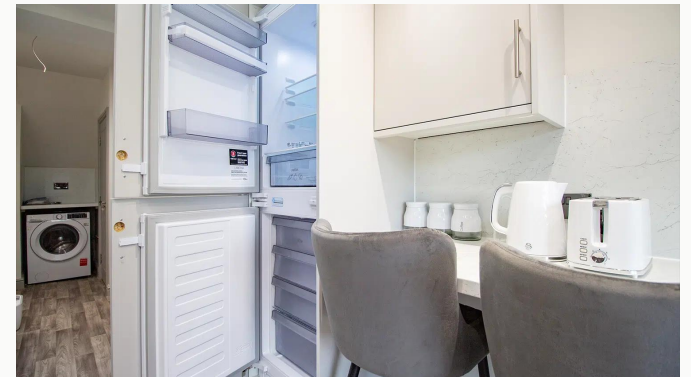
Kitchen



Kitchen



Kitchen



Kitchen



Kitchen



Kitchen



Kitchen



Kitchen



Garden



Garden



Garden



Garden



Driveway

Available
From 07/05/2026

Comes
Furnished

Bedrooms
1

Receptions
0

Bathrooms
1

Parking
Driveway

Postcode
LE11 4QH

Rent
£675 pcm

Deposit
£770

EPC
77 | C

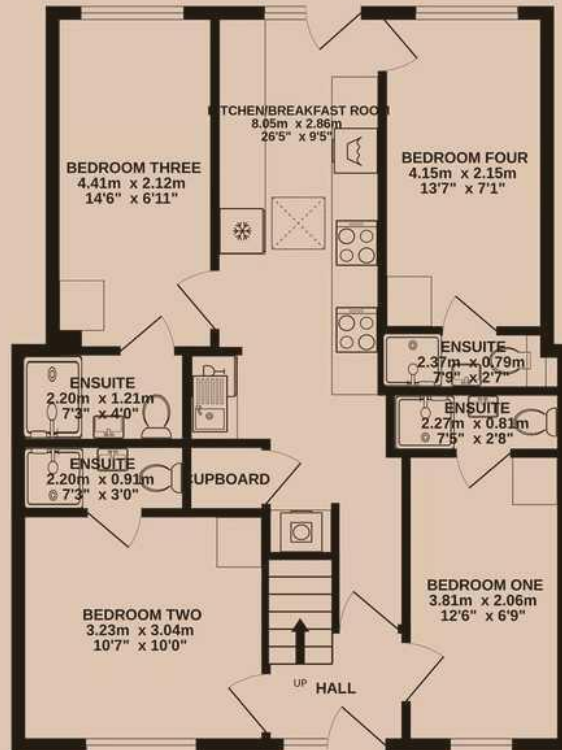
Council Tax Band
B

ID
#19590

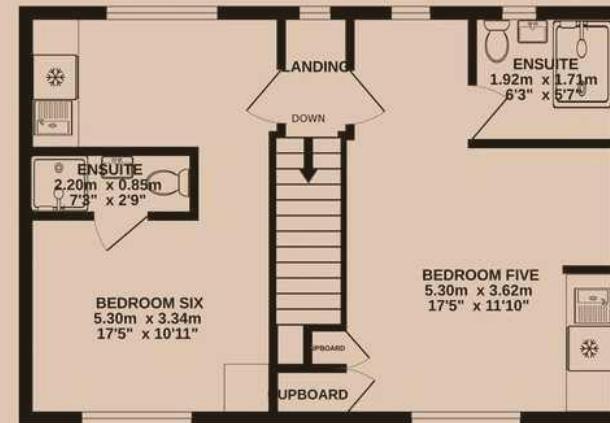
Updated
16/05/2026



GROUND FLOOR
65.0 sq.m. (700 sq.ft.) approx.



1ST FLOOR
41.0 sq.m. (441 sq.ft.) approx.



Have a property like this? Let's work together.

Design and marketing are at the heart of our approach. With most people now looking for property online, we can get our clients' properties in front of as many people as the most prominent national agents. Where we differ is in the quality of our work. We create stunning digital particulars that highlight the individual attributes of every property we market, with videos and floor plans as standard.



OUR OFFICE
7 Biggin Street
Loughborough, LE11 1UA

CONTACT US
01509 320 320
let@huntleys.net



Huntleys

