

An aerial photograph of a modern brick building complex in Loughborough. The building features a prominent rooftop terrace with glass railings, outdoor seating, and two large glass domes. The surrounding area includes other buildings, a tall chimney stack labeled 'THE MILL', and a clear blue sky. The text 'The Wharf Loughborough' is overlaid in a white, elegant serif font.

The Wharf
Loughborough

2 Bed 1st Floor Apartment • LE11 1GN • £1,400 pcm • £1,610 Deposit



The Wharf, Loughborough

Introducing The Wharf, now available to let. Set in the highest specification development that Loughborough has to offer. This premium, FURNISHED, two double-bedroom first-floor apartment is ready for occupation. In the developer's own words, "Residents can enjoy waterside living at its best, with free access to The Wharf's gymnasium, fitness studio, communal office space, rooftop terrace and concierge service. Each apartment comes with allocated parking space(s) and The Wharf offers easy access to Loughborough's town centre and train station. The Waterside Village offers the perfect live, work and play living experience". All photos, video tours & floor plans are of actual apartment available.

Lounge / Diner

Contemporary living area that is open plan to the kitchen and runs the full depth of the apartment. Featured Juliet Balcony overlooking the courtyard. Furniture included.

Kitchen

A Pullman kitchen in charcoal with matching worktop and brick-bond tiling. Hidden away behind the smart cabinets, there are all the integrated appliances, including a fridge-freezer, dual ovens, washer-dryer, easy-clean hob and a dishwasher - open plan to the living area.

Master Bedroom

Elegant and spacious double bedroom with benefits of an ensuite shower room featuring floor-to-ceiling window. Wood effect flooring and exposed brick completes the look. Furniture Included.

Bedroom Two

Generously proportioned second double bedroom, with dimensions almost identical to the Master bedroom. Furniture included.

Bathroom

This beautiful three-piece bathroom comes complete with a "rain shower" head over the bath, heated towel rail and shaving point. Classic, brick-bond tiling completes the look.

Ensuite

A three-piece en-suite shower room with a matching finish to the bathroom, heated towel rail and shaving point. Classic, brick-bond tiling completes the look.

Parking

Allocated parking within The Waterside Village gated car park.

Rooftop Terrace

For The Wharf residents to enjoy a stunning rooftop terrace overlooking Loughborough and the countryside.

Heating

Central heating throughout.

For more information about this property, visit our website huntleys.net.

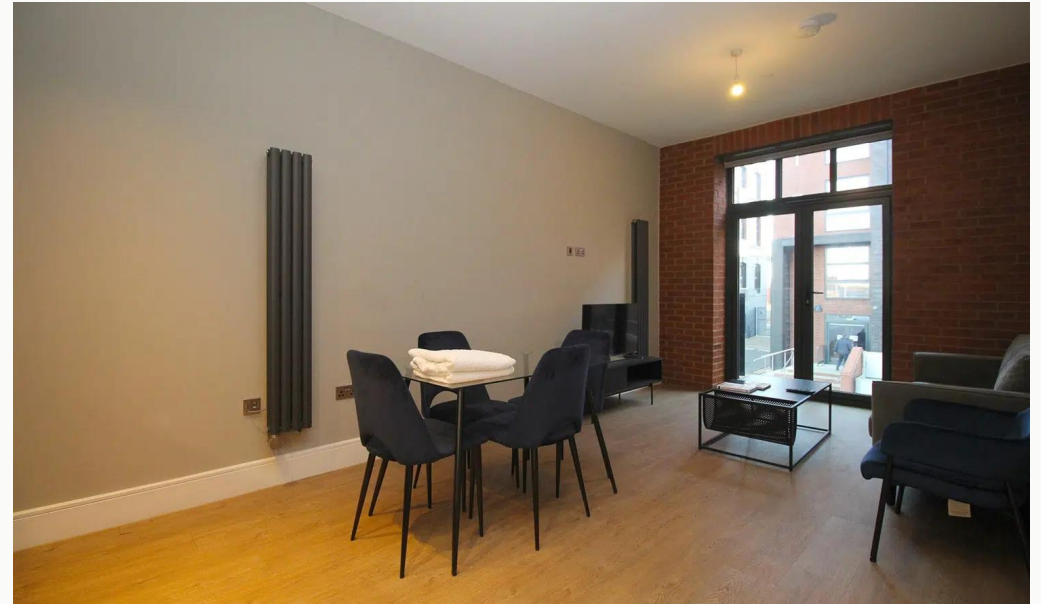
Energy Performance

Score	Energy rating	Current	Potential
92+	A		
81-91	B		
69-80	C	77 C	77 C
55-68	D		
39-54	E		
21-38	F		
1-20	G		

We aim to make our particulars both accurate and reliable. However they are not guaranteed; nor do they form part of an offer or contract. If you require clarification on any points then please contact us, especially if you are traveling some distance to view. All measurements are to widest point.



Lounge / Diner



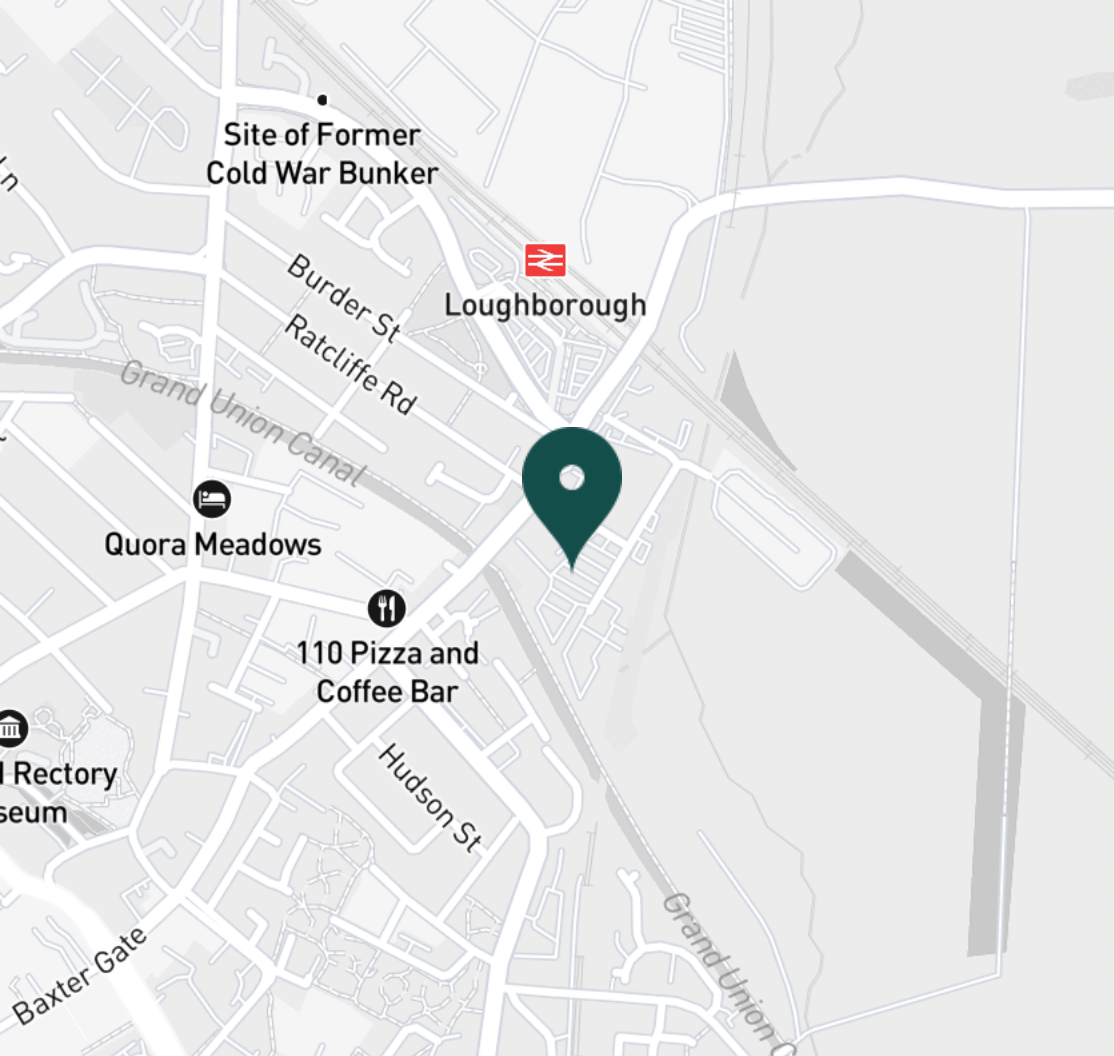
Lounge / Diner



Lounge



Lounge / Diner



SUPERMARKETS

Marks & Spencer	0.7 mi
Tesco Superstore Loughborough	0.8 mi
Aldi Loughborough	1.0 mi
Lidl Loughborough	1.1 mi
Sainsburys Loughborough	1.2 mi

GYMS

CrossFit Loughborough	0.5 mi
PureGym Loughborough	0.7 mi
Anytime Fitness Loughborough	0.8 mi
Dynamite Gym Ltd	0.8 mi
NPC Performance Centre	1.0 mi

TRAIN STATIONS

Loughborough	0.3 mi
Barrow upon Soar	4.1 mi
Sileby	6.0 mi
East Midlands Parkway	10.5 mi
Syston	10.9 mi

NURSERY SCHOOLS

Cobden Childrens Centre	0.6 mi
Babblebrooke Day Nursery	0.7 mi
Lime Tree Nursery	0.8 mi
Small World Nursery	1.1 mi
Westwards Nursery	1.2 mi

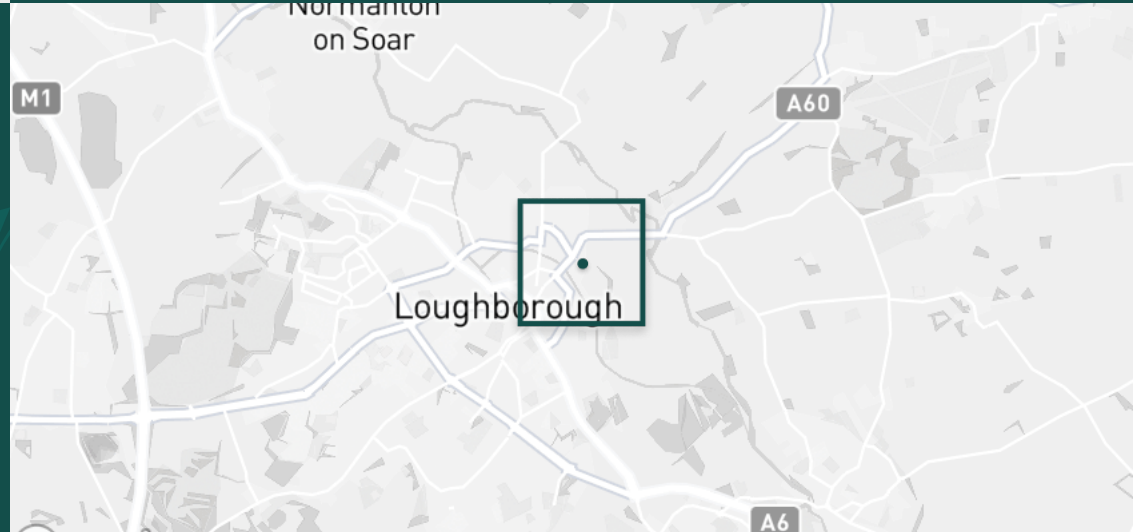
PRIMARY SCHOOLS

Rendell Primary School	0.5 mi
Cobden PS	0.9 mi
Fairfield Preparatory Sch	1.0 mi
St Marys Catholic PS	1.3 mi
Loughborough Grammar Sch	1.3 mi

HIGH SCHOOLS

Limehurst Academy	0.6 mi
Loughborough Grammar Sch	1.3 mi
Our Lady's Convent Sch	1.3 mi
Loughborough High Sch	1.4 mi
RNIB College Loughborough	1.5 mi

Discover
Loughborough



- ✓ Furnished
- ✓ Available Soon
- ✓ High-spec Gymnasium
- ✓ Rooftop Terrace
- ✓ Two Double Bedrooms
- ✓ Allocated Parking





Kitchen



Master Bedroom



Master Bedroom



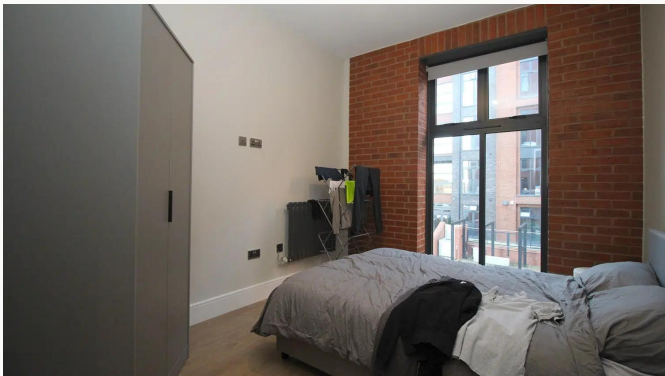
Master Bedroom



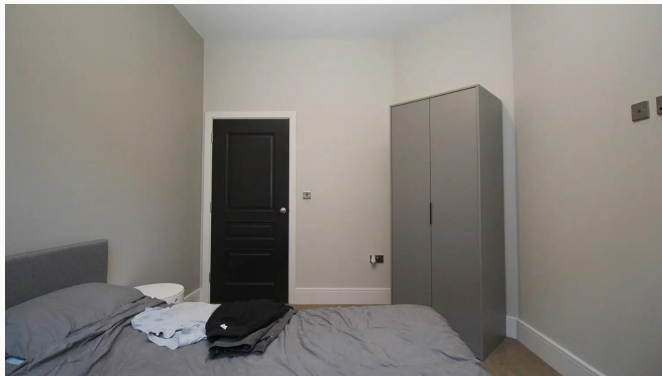
Ensuite



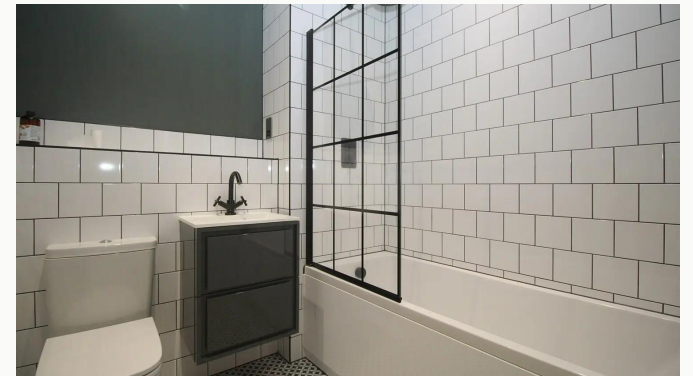
Ensuite



Bedroom Two



Bedroom Two



Bathroom



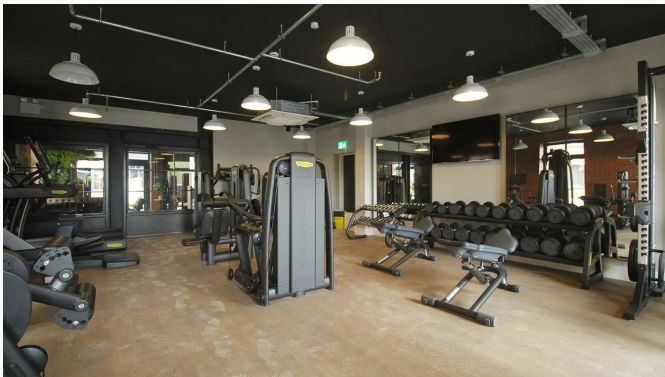
Hallway



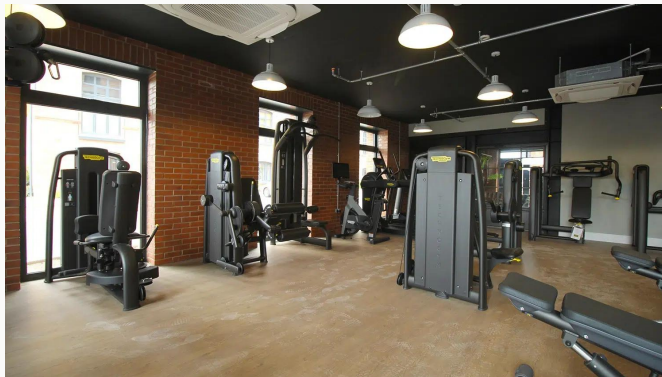
Apartment Entrance



Rooftop Terrace



Gym



Gym



Gym



Gym



Fitness Studio



Fitness Studio



Reception



Reception



Rooftop Terrace



Rooftop Terrace



Canal Terrace



Waterside Village



The Wharf

Available
From 18/02/2025

Comes
Furnished

Bedrooms
2

Receptions
1

Bathrooms
2

Parking
Allocated

Postcode
LE11 1GN

Rent
£1,400 pcm

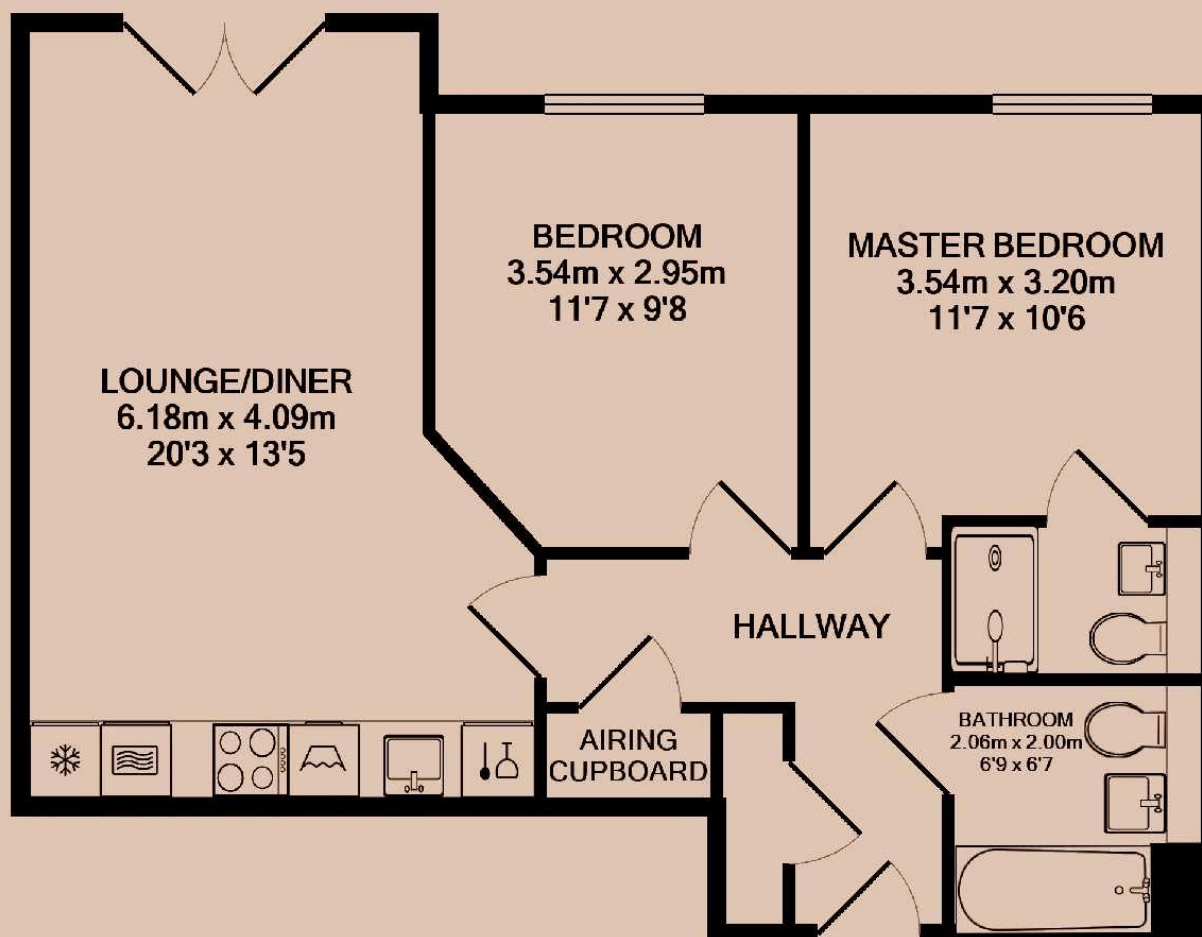
Deposit
£1,610

EPC
77 | C

Council Tax Band
B

ID
#11504

Updated
16/01/2025



Have a property like this? Let's work together.

Design and marketing are at the heart of our approach. With most people now looking for property online, we can get our clients' properties in front of as many people as the most prominent national agents. Where we differ is in the quality of our work. We create stunning digital particulars that highlight the individual attributes of every property we market, with videos and floor plans as standard.



OUR OFFICE
7 Biggin Street
Loughborough, LE11 1UA

CONTACT US
01509 320 320
let@huntleys.net



Huntleys

