



Pulteney Road
Loughborough

3 Bed Semi-Detached House • LE11 2NB • £1,000 pcm • £1,150 Deposit



Pulteney Road, Loughborough

Now available to let in Loughborough. A recently refurbished, unfurnished, three-bedroom, semi-detached house. This property comes with a sizeable lounge, kitchen/diner, three bedrooms, three piece bathroom and a downstairs toilet. To the front of the property is a driveway for multiple cars with access to the garage. To the rear is a good sized garden.

Lounge

A spacious lounge, stretching the full depth of the property. Sliding glass door gives access to the rear garden.

Kitchen / Diner

Also covering the full depth of the property, an L-shaped kitchen, large enough to also be used as a diner. This kitchen comes with a free standing cooker and hob.

Master Bedroom

The larger of the three bedrooms. A double bedroom overlooking the front of the property.

Bedroom Two

A second double bedroom, also overlooking the front of the property.

Bedroom Three

A third bedroom, overlooking the rear garden.

Bathroom

A three piece bathroom set on the first floor. This bathroom comes with a bath, sink, toilet and shower above the bath.

Garage

Set beside the property, a single garage. Accessed via driveway and garden.

Garden

Set to the rear of the property, a sizeable rear garden. Split level garden with patio and lawn area.

Parking

Set to the front of the property, a driveway with space for multiple cars and access to the garage.

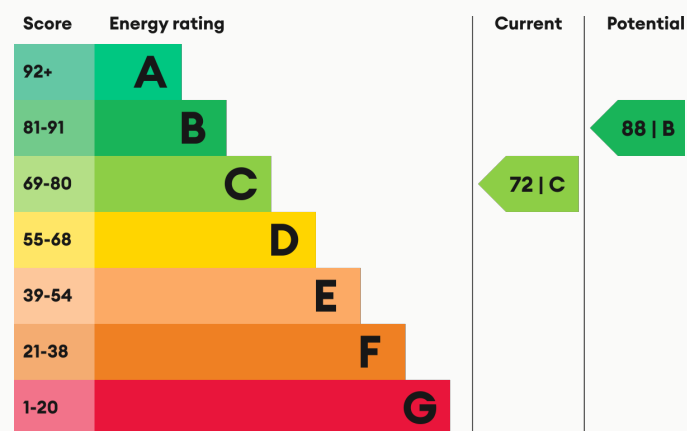
Heating

Gas-fired central heating.

Glazing

Modern, good quality, uPVC double glazing.

Energy Performance



We aim to make our particulars both accurate and reliable. However they are not guaranteed; nor do they form part of an offer or contract. If you require clarification on any points then please contact us, especially if you are traveling some distance to view. All measurements are to widest point.



Lounge



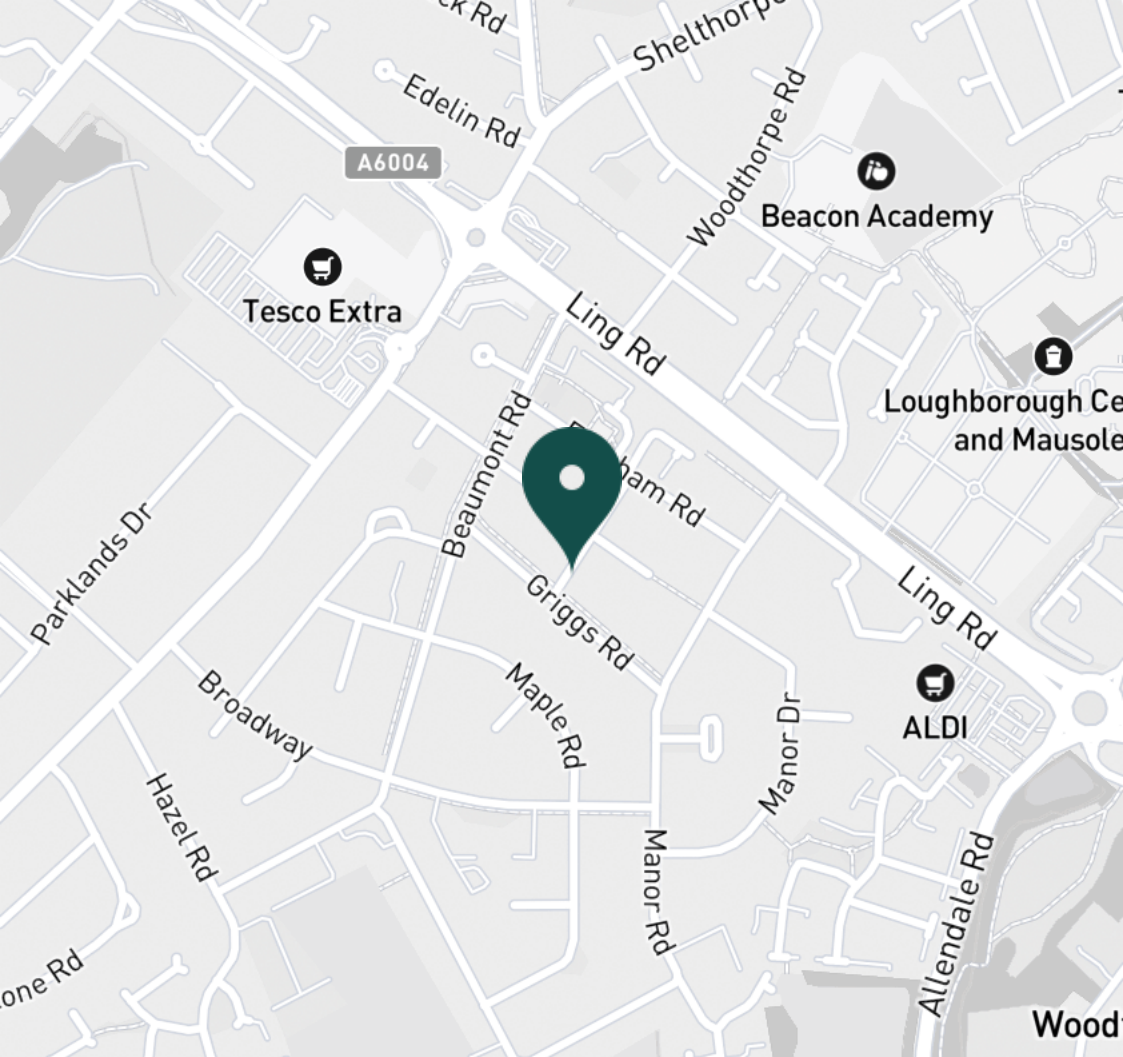
Lounge



Lounge



Kitchen



SUPERMARKETS

Tesco Extra Loughborough	0.4 mi
Sainsburys Loughborough	1.6 mi
Tesco Superstore Loughborough	1.6 mi
Marks & Spencer	1.7 mi
Co-op Food Knightthorpe Rd	2.0 mi

GYMS

Fit4Less	1.3 mi
Radmoor Centre	1.3 mi
NPC Performance Centre	1.4 mi
Dynamite Gym Ltd	1.5 mi
Loughborough University Pool	1.5 mi

TRAIN STATIONS

Loughborough	2.3 mi
Barrow upon Soar	3.4 mi
Sileby	5.2 mi
Syston	10.2 mi
South Wigston	10.4 mi

NURSERY SCHOOLS

Shelthorpe Childrens Centre	0.6 mi
Parkside PS	0.6 mi
Westwards Nursery	0.9 mi
Emmanuel PS	1.3 mi
Lime Tree Nursery	1.3 mi

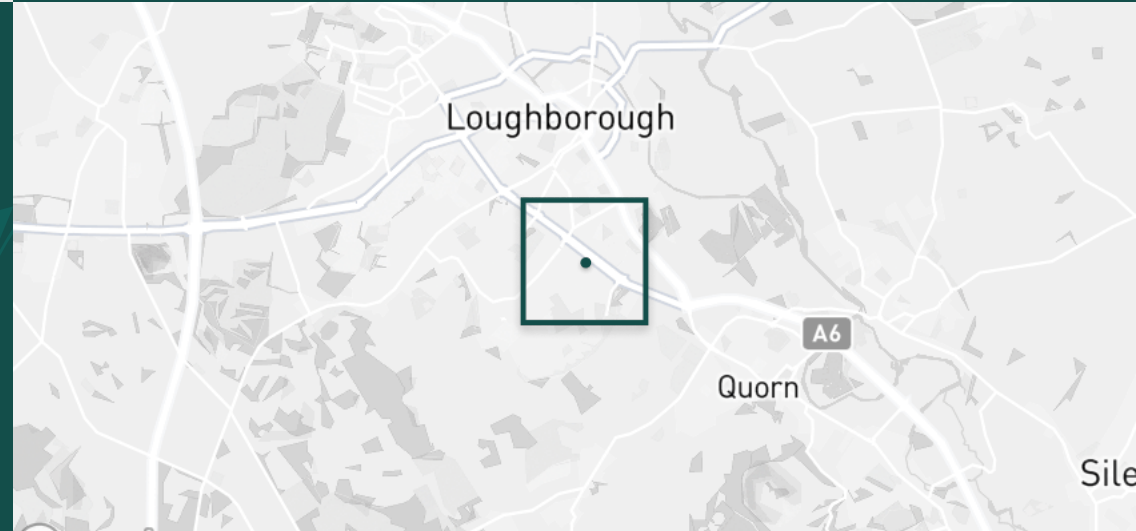
PRIMARY SCHOOLS

Outwoods Edge PS	0.7 mi
Beacon Primary Academy	0.7 mi
Sacred Heart Catholic PS	0.7 mi
Our Lady's Convent Sch	0.9 mi
Mountfields Lodge Sch	1.1 mi

HIGH SCHOOLS

Our Lady's Convent Sch	0.9 mi
Woodbrook Vale	1.1 mi
Loughborough Grammar Sch	1.3 mi
Loughborough College	1.3 mi
Loughborough High Sch	1.3 mi

Discover
Loughborough

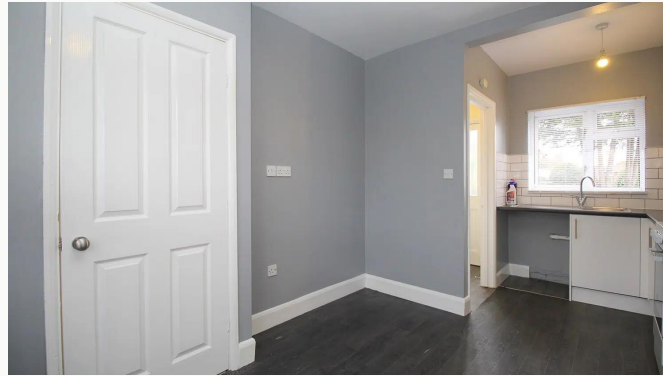


- ✓ Three Bedrooms
- ✓ Available Now
- ✓ Refurbished
- ✓ Garage
- ✓ Unfurnished
- ✓ Garden

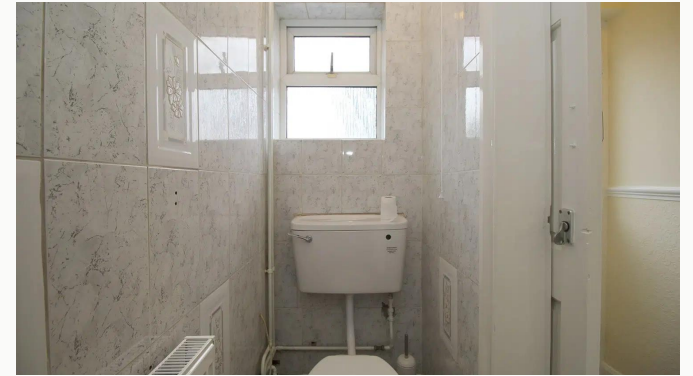




Kitchen



Kitchen



Water Closet



Master Bedroom



Master Bedroom



Master Bedroom



Bedroom Two



Bedroom Two



Bedroom Three



Bedroom Three



Bathroom



Bathroom



Landing



Hallway



Garden



Garden



Garden



Garden



Pulteney Road

Available
From 15/10/2024

Comes
Unfurnished

Bedrooms
3

Receptions
1

Bathrooms
1

Parking
Driveway

Postcode
LE11 2NB

Rent
£1,000 pcm

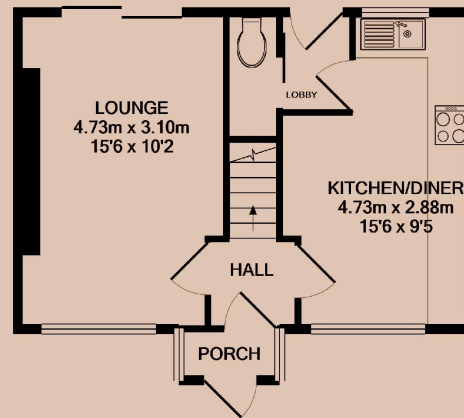
Deposit
£1,150

EPC
72 | C

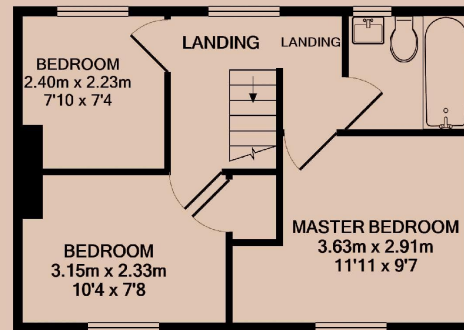
Council Tax Band
B

ID
#13551

Updated
15/10/2024



GROUND FLOOR



1ST FLOOR

Have a property like this? Let's work together.

Design and marketing are at the heart of our approach. With most people now looking for property online, we can get our clients' properties in front of as many people as the most prominent national agents. Where we differ is in the quality of our work. We create stunning digital particulars that highlight the individual attributes of every property we market, with videos and floor plans as standard.



OUR OFFICE
7 Biggin Street
Loughborough, LE11 1UA

CONTACT US
01509 320 320
let@huntleys.net

