

A photograph of a modern kitchen and dining area. In the foreground, a long wooden bar with a light-colored finish is visible, with four black high-backed bar stools with chrome bases. To the left, a kitchen area with light-colored cabinets and a sink is visible. In the background, a window with black frames and blinds is set into a white wall. To the right, a white door is partially visible. The floor is covered in light-colored square tiles. The overall lighting is bright and even.

Cambridge Street

Loughborough

2 Bed Terraced House • LE11 1NN • £940 pcm • £1,080 Deposit



Cambridge Street, Loughborough

A Victorian terraced, part-furnished, two-double-bedroom house soon available to let in Loughborough, and situated close to the town centre. This property comes with a lounge, extended kitchen/diner, two double bedrooms, four-piece bathroom and garden. All photos and video are of actual property.

Lounge

Set to the front of the property, a carpeted and neutral lounge.

Kitchen / Diner

The hub of the home, a contemporary kitchen that can also be used as a breakfast room/diner. This kitchen comes equipped with a fridge/freezer, washing machine, oven and hob.

Master Bedroom

The larger of the two bedrooms. This double bedroom comes with the furniture pictured and additional built-in storage.

Bedroom Two

A second double bedroom, this bedroom over looks the rear garden and also comes with the furniture pictured.

Bathroom

Situated on the first floor, a modern four-piece bathroom including a walk-in-shower, bath, sink and toilet.

Garden

Situated to the rear of the property, a low maintenance garden. One of the outhouses are available for storage. Please note, residents may need access through this garden.

Parking

Parking is available with a permit on Cambridge Street.

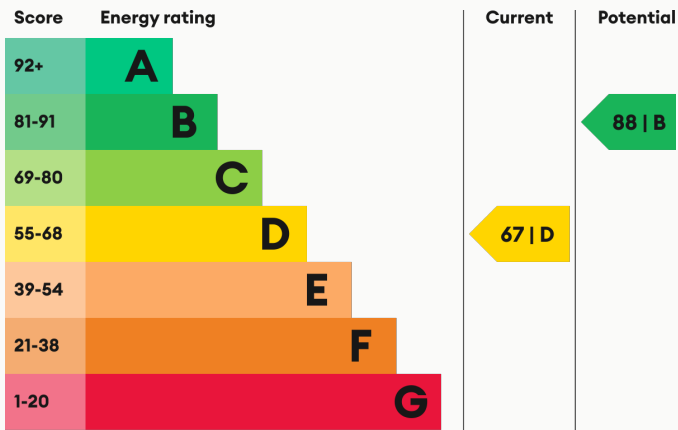
Heating

Gas fired central heating.

Glazing

Modern, good quality, uPVC double glazing.

Energy Performance



We aim to make our particulars both accurate and reliable. However they are not guaranteed; nor do they form part of an offer or contract. If you require clarification on any points then please contact us, especially if you are traveling some distance to view. All measurements are to widest point.



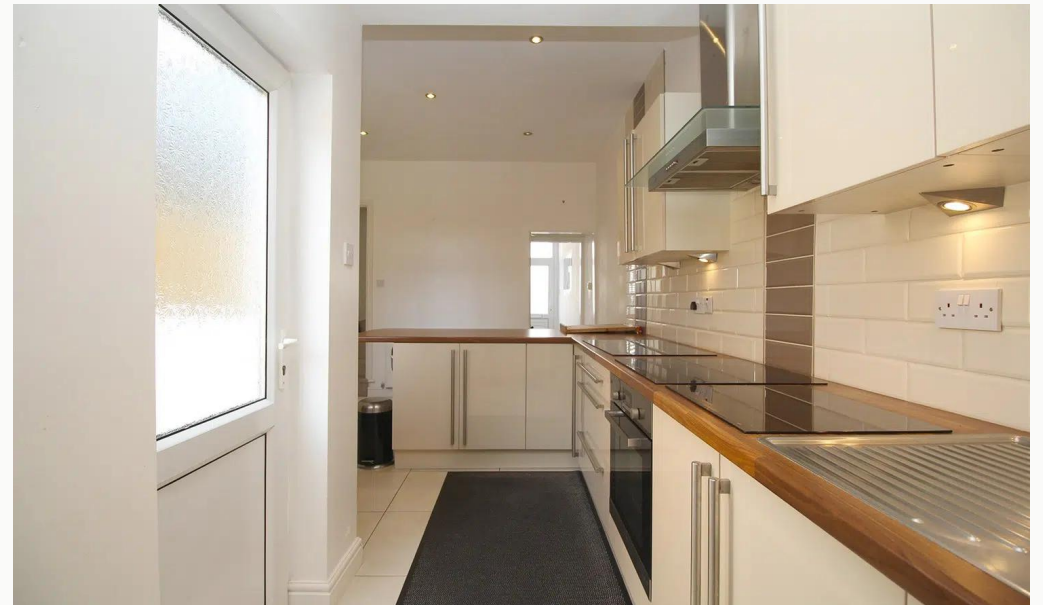
Kitchen / Diner



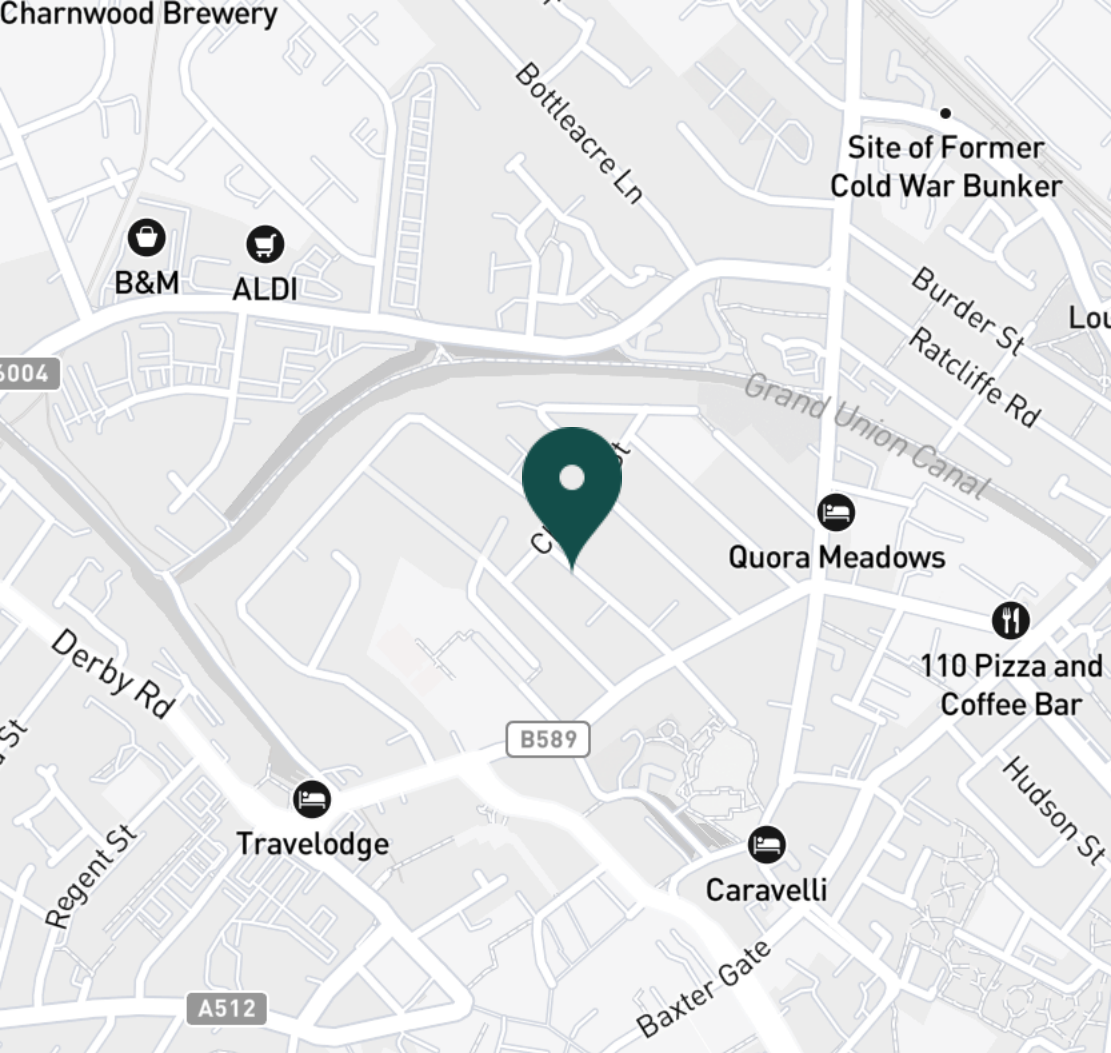
Kitchen



Kitchen



Kitchen



SUPERMARKETS

Tesco Superstore Loughborough	0.5 mi
Lidl Loughborough	0.7 mi
Marks & Spencer	0.8 mi
Sainsburys Loughborough	0.8 mi
Aldi Loughborough	0.8 mi

GYMS

PureGym Loughborough	0.3 mi
CrossFit Loughborough	0.3 mi
Anytime Fitness Loughborough	0.4 mi
Dynamite Gym Ltd	0.8 mi
Fit4Less	1.0 mi

TRAIN STATIONS

Loughborough	0.7 mi
Barrow upon Soar	4.2 mi
Sileby	6.1 mi
East Midlands Parkway	10.1 mi
Syston	11.1 mi

NURSERY SCHOOLS

Babblebrooke Day Nursery	0.3 mi
Cobden Childrens Centre	0.7 mi
Small World Nursery	0.7 mi
Busy Bees in Loughborough	0.9 mi
Kingscliffe Day Nursery	1.0 mi

PRIMARY SCHOOLS

Rendell Primary School	0.3 mi
Cobden PS	0.8 mi
St Marys Catholic PS	0.9 mi
Fairfield Preparatory Sch	1.0 mi
Loughborough CE PS	1.1 mi

HIGH SCHOOLS

Limehurst Academy	0.2 mi
RNIB College Loughborough	1.1 mi
Our Lady's Convent Sch	1.3 mi
Loughborough Grammar Sch	1.5 mi
Loughborough High Sch	1.5 mi

Discover
Loughborough





Lounge



Lounge



Lounge



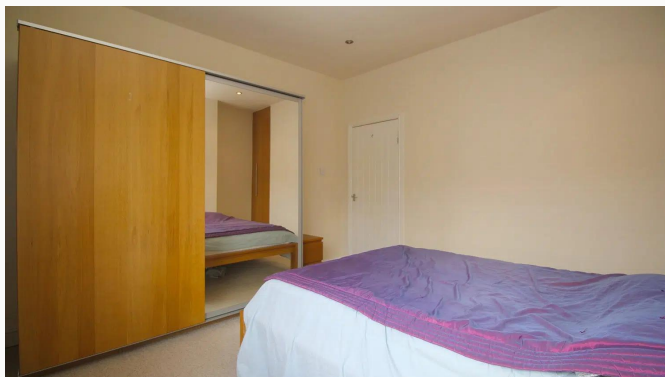
Lounge



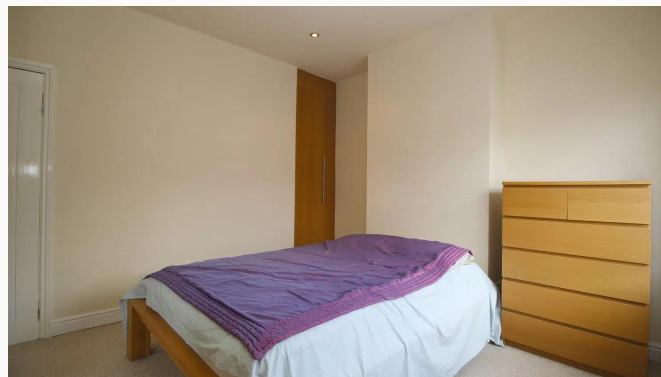
Master Bedroom



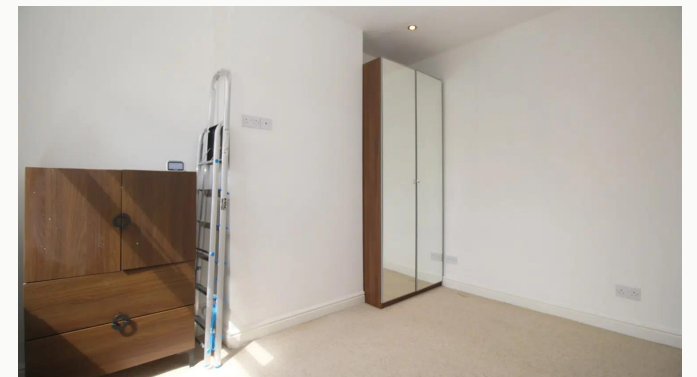
Master Bedroom



Master Bedroom



Master Bedroom



Bedroom Two



Bedroom Two



Bedroom Two



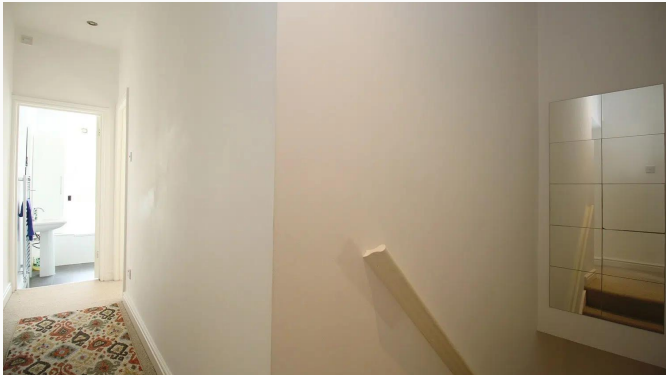
Bathroom



Bathroom



Bathroom



Landing



Garden



Garden



Garden



Entrance



Cambridge Street



Cambridge Street

Available
From 03/07/2025

Rent
£940 pcm

Comes
Part Furnished

Deposit
£1,080

Bedrooms
2

EPC
67 | D

Receptions
1

Council Tax Band
B

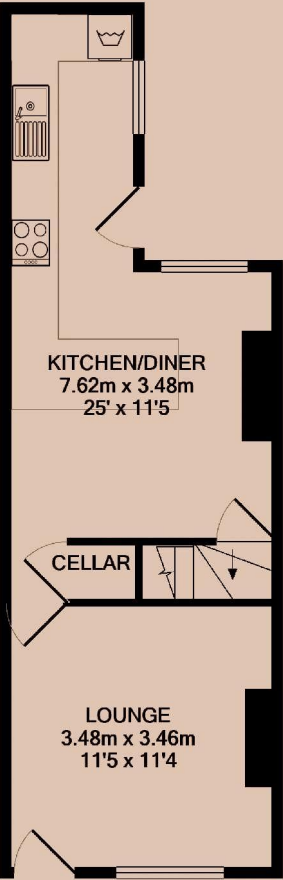
Bathrooms
1

ID
#3917

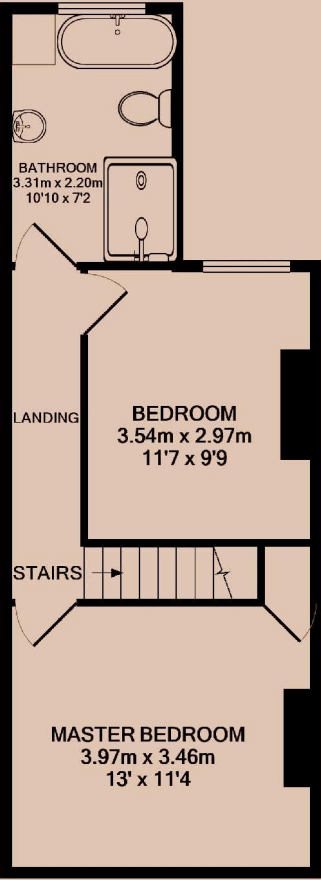
Parking
With permit

Updated
10/06/2025

Postcode
LE11 1NN



GROUND FLOOR



1ST FLOOR

Have a property like this? Let's work together.

Design and marketing are at the heart of our approach. With most people now looking for property online, we can get our clients' properties in front of as many people as the most prominent national agents. Where we differ is in the quality of our work. We create stunning digital particulars that highlight the individual attributes of every property we market, with videos and floor plans as standard.



OUR OFFICE
7 Biggin Street
Loughborough, LE11 1UA

CONTACT US
01509 320 320
let@huntleys.net

