



*Melton Road*  
Barrow-Upon-Soar

2 Bed 1st Floor Apartment • LE12 8NS • £800 pcm • £920 Deposit



## Melton Road, Barrow-Upon-Soar

Presented in great condition, a two bedroom, first-floor apartment set within the sought after village of Barrow-Upon-Soar. This property includes two double bedrooms, open lounge/diner, kitchen and family bathroom. Set back from Melton Road, is allocated parking for this apartment. Available soon.

### Lounge / Diner

An open and bright living space, large enough to be used as a lounge and diner. Open to the kitchen.

### Kitchen

Open to, and accessed via the lounge. A contemporary U-shaped kitchen, including an oven, hob, washing machine, integrated fridge and freezer.

### Master Bedroom

A sizeable double bedroom, the largest of the two, includes a built in wardrobe/cloakroom.

### Bedroom Two

A second double bedroom, situated by the lounge.

### Bathroom

A bright and clean three-piece bathroom, including a bath, sink, toilet and shower above the bath.

### Parking

An allocated space included for one car, with further visitor parking spaces within the same car park.

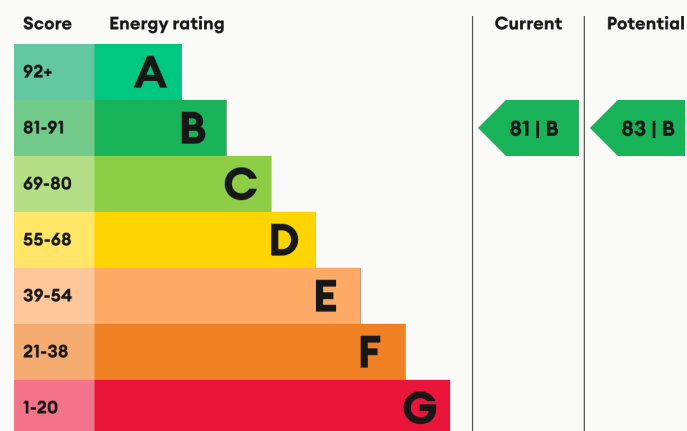
### Heating

Electric storage heating.

### Glazing

Modern, good quality, uPVC double glazing.

### Energy Performance



We aim to make our particulars both accurate and reliable. However they are not guaranteed; nor do they form part of an offer or contract. If you require clarification on any points then please contact us, especially if you are traveling some distance to view. All measurements are to widest point.



Lounge / Diner



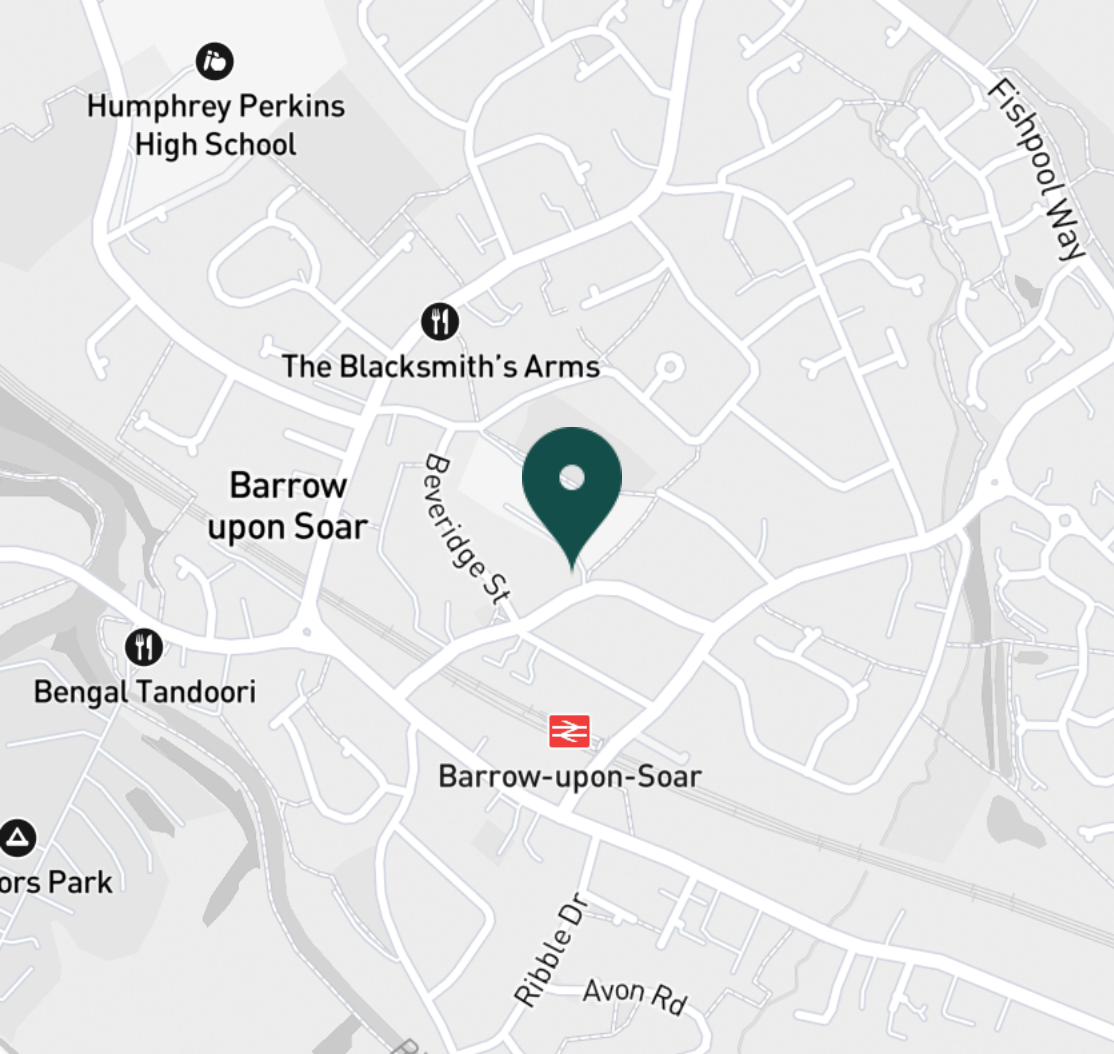
Kitchen



Kitchen



Kitchen



#### SUPERMARKETS

Co-op Food Barrow Upon Soar	0.6 mi
Co-op Food Quorn	2.3 mi
Waitrose Mountsorrel	2.6 mi
Tesco Extra Loughborough	3.5 mi
Marks & Spencer	4.1 mi

#### GYMS

Physfit Gyms	2.1 mi
Total Fitness Centre	2.3 mi
Rosemary Conley Fitness Club	2.7 mi
Onestep fitness	3.0 mi
bofitness	3.2 mi

#### TRAIN STATIONS

Barrow upon Soar	0.2 mi
Sileby	2.3 mi
Loughborough	5.4 mi
Syston	8.4 mi
South Wigston	8.6 mi

#### NURSERY SCHOOLS

Sileby Littlestars PS	2.3 mi
Peter Pan Playgroup	2.3 mi
Quorn Nursery School	2.4 mi
Radmoor Nursery	2.5 mi
Radmoor Nursery	2.5 mi

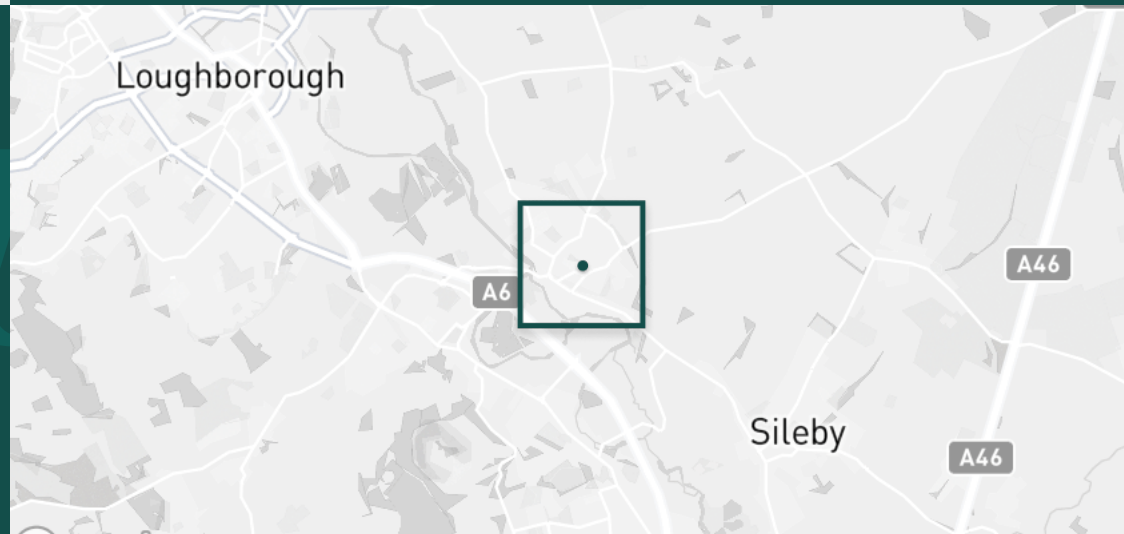
#### PRIMARY SCHOOLS

Hall Orchard CE PS	0.0 mi
St Bartholomew's CE PS	2.4 mi
Redlands Community PS	2.5 mi
Burton-on-the-Wolds PS	2.8 mi
Christ Church & St Peters CE	2.9 mi

#### HIGH SCHOOLS

Humphrey Perkins High Sch	0.9 mi
Rawlins Academy	2.4 mi
Loughborough Grammar Sch	3.6 mi
Loughborough High Sch	3.7 mi
Our Lady's Convent Sch	3.8 mi

Discover  
*Barrow-Upon-Soar*



- ✓ Fantastic Condition
- ✓ Two Double Bedrooms
- ✓ Some Appliances Included
- ✓ Barrow-Upon-Soar
- ✓ Available Soon
- ✓ First Floor





Master Bedroom



Master Bedroom



Master Bedroom



Master Bedroom



Bedroom Two



Bedroom Two



Bedroom Two



Bathroom



Bathroom



Hallway



Entrance



Melton Road



Car Park



Melton Road



**Available**  
From 16/02/2024

**Comes**  
Unfurnished

**Bedrooms**  
2

**Receptions**  
1

**Bathrooms**  
1

**Parking**  
Allocated

**Postcode**  
LE12 8NS

**Rent**  
£800 pcm

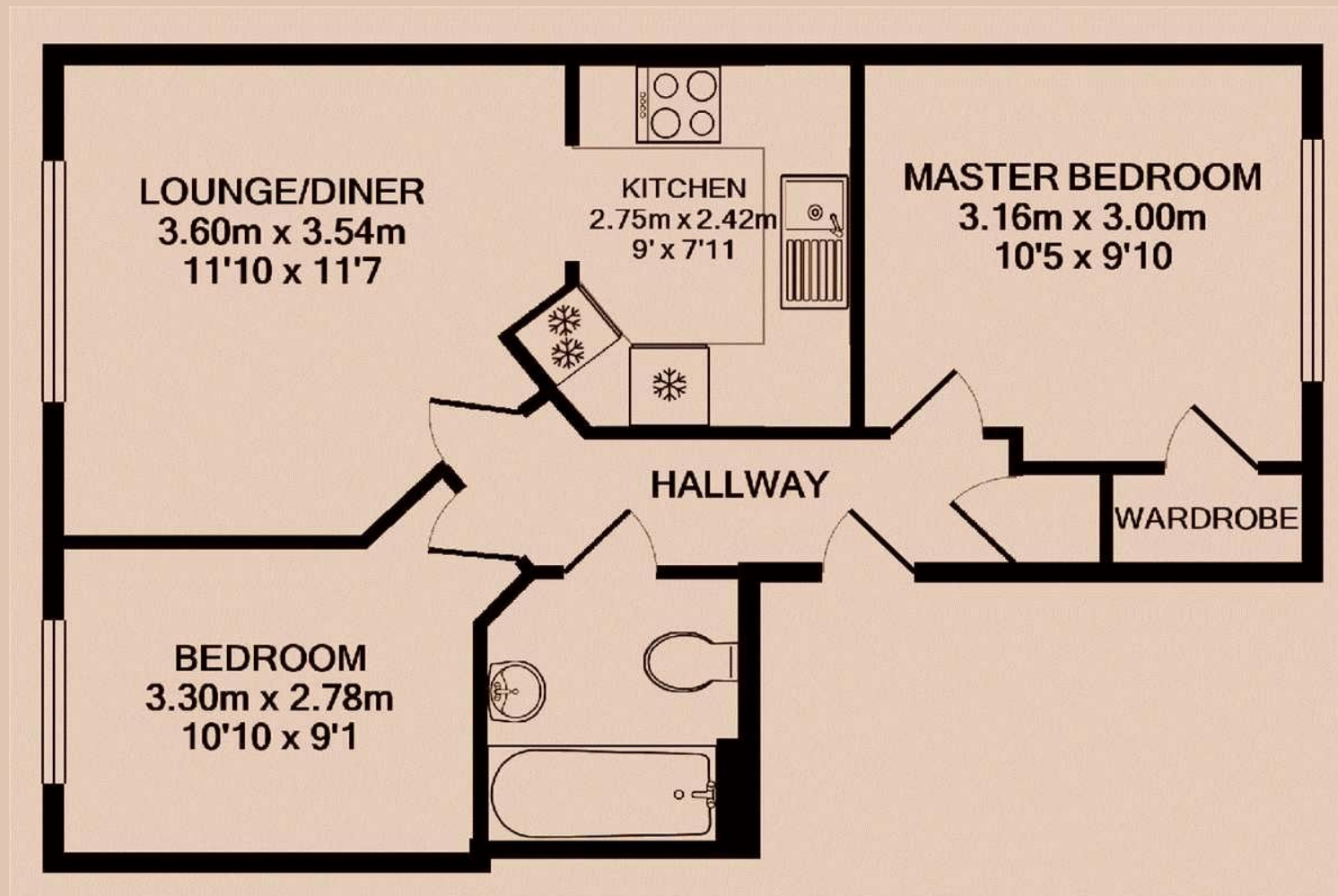
**Deposit**  
£920

**EPC**  
81 | B

**Council Tax Band**  
B

**ID**  
#12744

**Updated**  
23/01/2025



# *Have a property like this? Let's work together.*

Design and marketing are at the heart of our approach. With most people now looking for property online, we can get our clients' properties in front of as many people as the most prominent national agents. Where we differ is in the quality of our work. We create stunning digital particulars that highlight the individual attributes of every property we market, with videos and floor plans as standard.



**OUR OFFICE**  
7 Biggin Street  
Loughborough, LE11 1UA

**CONTACT US**  
01509 320 320  
let@huntleys.net

