

Student

# *Leopold Street*

Loughborough

4 Bed Terraced House • LE11 5DW • £125 pppw • £250 Deposit Per Person



## Leopold Street, Loughborough

STUDENT property. FOUR double bedrooms. TWO Bathrooms. Located in the GOLDEN TRIANGLE, Fully FURNISHED. Side access to low maintenance rear garden. Clean and Smart. Double glazed and centrally heated. Just along from the PAGET ARMS. SOME BILLS INCLUDED. 2026 - 2027 Academic Year.

### Lounge 3.66m (12'0) x 3.44m (11'3)

The hub of the home with smart wood flooring and modern decor. Opens to the Kitchen keeps the home social.

### Kitchen 3.59m (11'9) x 1.95m (6'5)

A practical and fully equipped galley Kitchen. Includes all the appliances you'll need.

### Four Bedrooms

All the bedrooms in this house are good sized double rooms fully furnished with double beds, side tables, desks, chairs, wardrobes and chests of draws. The rooms are all decorated neutrally and are double glazed and centrally heated.

### Bathroom 2.05m (6'9) x 1.78m (5'10)

Located on the ground floor, this modern refitted three piece suite includes bath with electric shower and is fully tiled.

### Shower Room

Situated on the first floor, a sizeable, modern shower room including a walk-in shower, sink and toilet.

### Heating

Gas fired central heating.

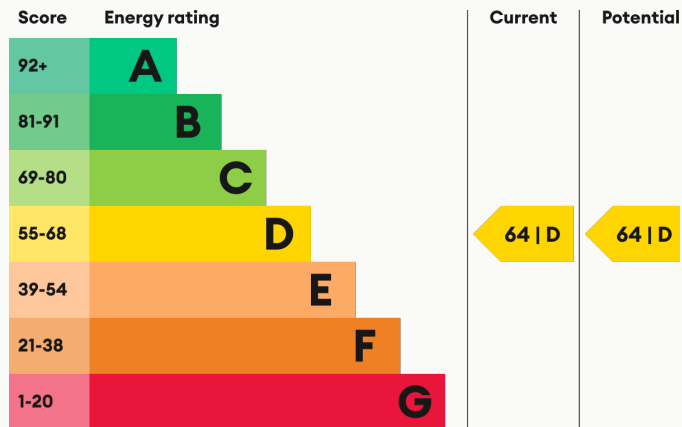
### Utilities

Gas, Electric and Water utilities included only. Sorry, broadband/internet is not included.

### Glazing

Modern, good quality, uPVC double glazing.

### Energy Performance



We aim to make our particulars both accurate and reliable. However they are not guaranteed; nor do they form part of an offer or contract. If you require clarification on any points then please contact us, especially if you are traveling some distance to view. All measurements are to widest point.



Lounge



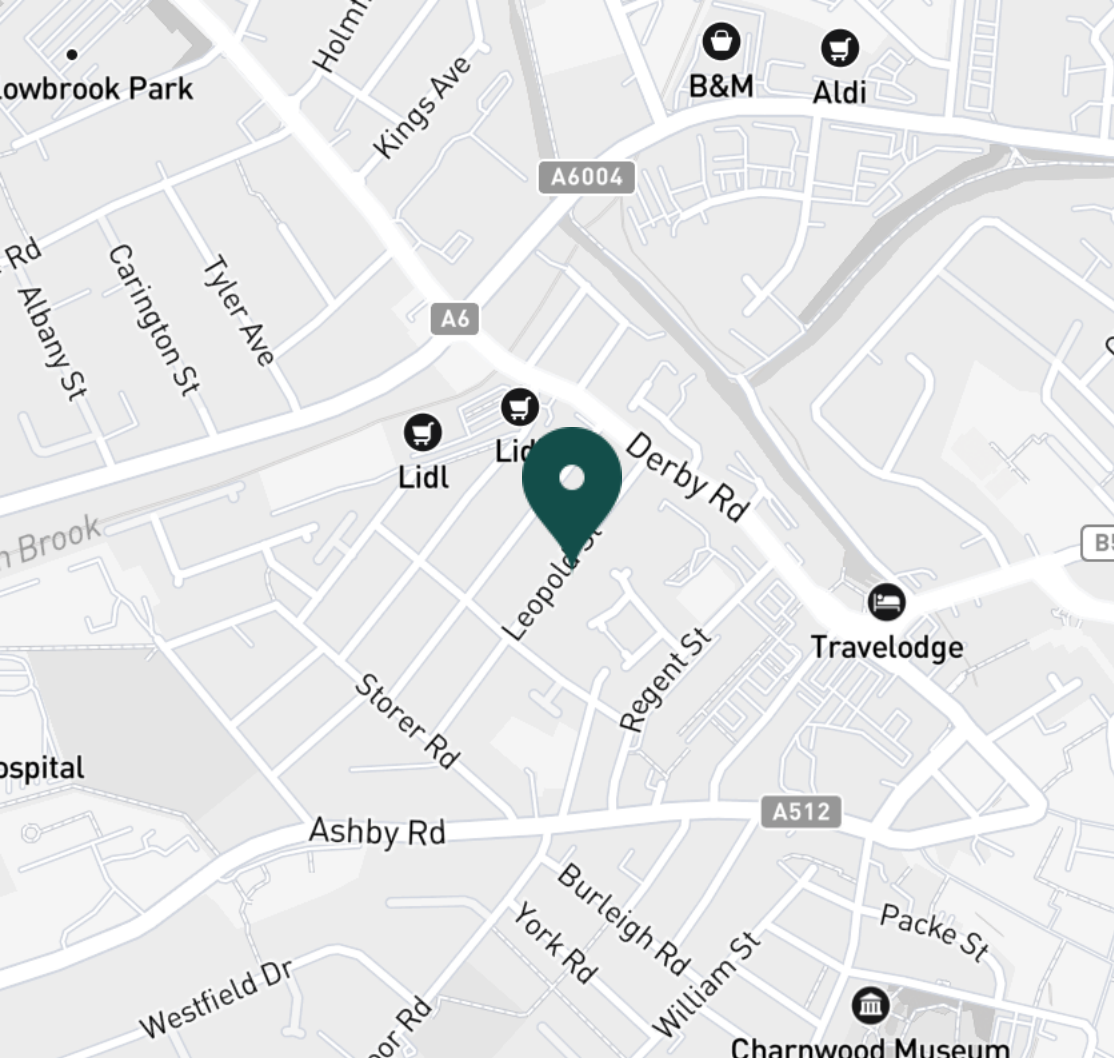
Lounge



Kitchen



Kitchen



#### SUPERMARKETS

|                               |        |
|-------------------------------|--------|
| Lidl Loughborough             | 0.2 mi |
| Tesco Superstore Loughborough | 0.4 mi |
| Sainsburys Loughborough       | 0.5 mi |
| Aldi Loughborough             | 0.6 mi |
| Marks & Spencer               | 0.7 mi |

#### GYMS

|                              |        |
|------------------------------|--------|
| Anytime Fitness Loughborough | 0.3 mi |
| PureGym Loughborough         | 0.5 mi |
| Dynamite Gym Ltd             | 0.6 mi |
| CrossFit Loughborough        | 0.8 mi |
| Loughborough University Pool | 0.9 mi |

#### TRAIN STATIONS

|                       |         |
|-----------------------|---------|
| Loughborough          | 1.2 mi  |
| Barrow upon Soar      | 4.3 mi  |
| Sileby                | 6.2 mi  |
| East Midlands Parkway | 9.6 mi  |
| Syston                | 11.1 mi |

#### NURSERY SCHOOLS

|                           |        |
|---------------------------|--------|
| Busy Bees in Loughborough | 0.2 mi |
| Kingscliffe Day Nursery   | 0.3 mi |
| Babblebrooke Day Nursery  | 0.4 mi |
| Small World Nursery       | 0.5 mi |
| Cobden Childrens Centre   | 0.9 mi |

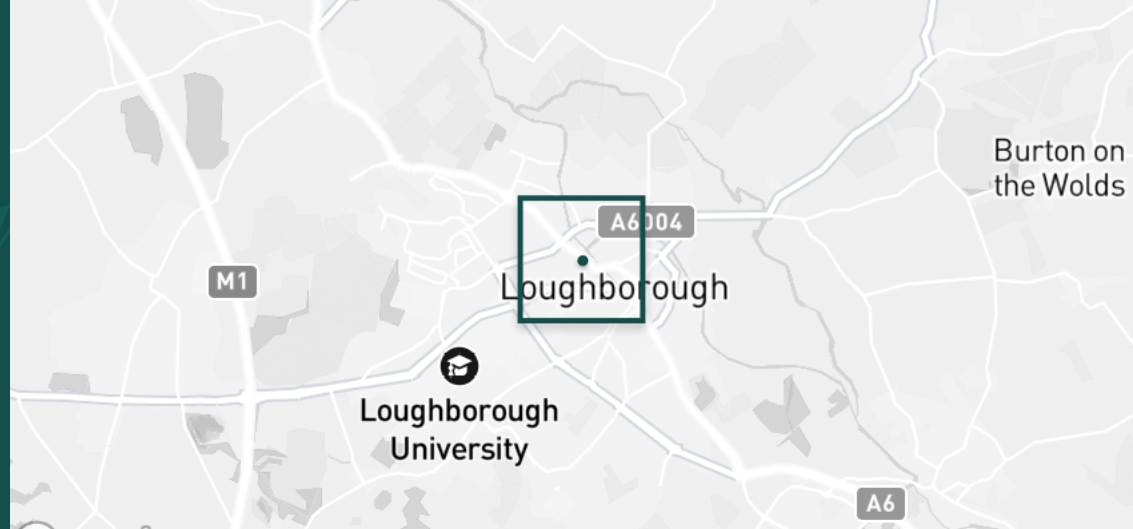
#### PRIMARY SCHOOLS

|                        |        |
|------------------------|--------|
| St Marys Catholic PS   | 0.3 mi |
| Loughborough CE PS     | 0.6 mi |
| Rendell Primary School | 0.8 mi |
| Cobden PS              | 1.0 mi |
| Robert Bakewell PS     | 1.1 mi |

#### HIGH SCHOOLS

|                              |        |
|------------------------------|--------|
| Limehurst Academy            | 0.5 mi |
| RNIB College Loughborough    | 0.5 mi |
| Loughborough College         | 1.0 mi |
| Lboro Uni School Of The Arts | 1.0 mi |
| The Garendon High Sch        | 1.3 mi |

Discover  
*Loughborough*





Kitchen



Kitchen



Bedroom



Bedroom



Bedroom



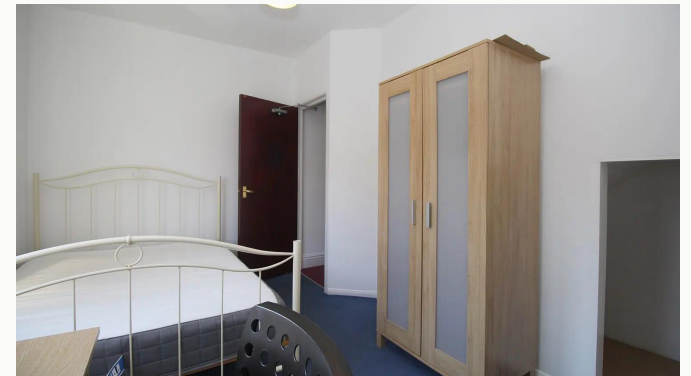
Bedroom



Bedroom



Bedroom



Bedroom



Bedroom



Bedroom



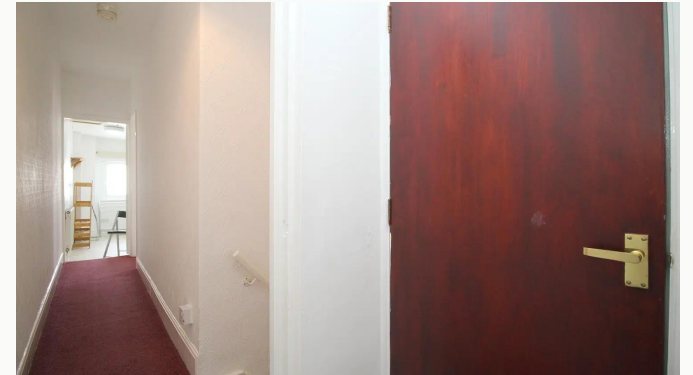
Shower Room



Shower Room



Bathroom



Hallway



Leopold Street



Garden



Garden



Garden



Garden

**Available**  
From 02/09/2025

**Comes**  
Furnished

**Bedrooms**  
4

**Receptions**  
1

**Bathrooms**  
2

**Parking**  
Ask Agent

**Postcode**  
LE11 5DW

**Rent**  
£125 pppw

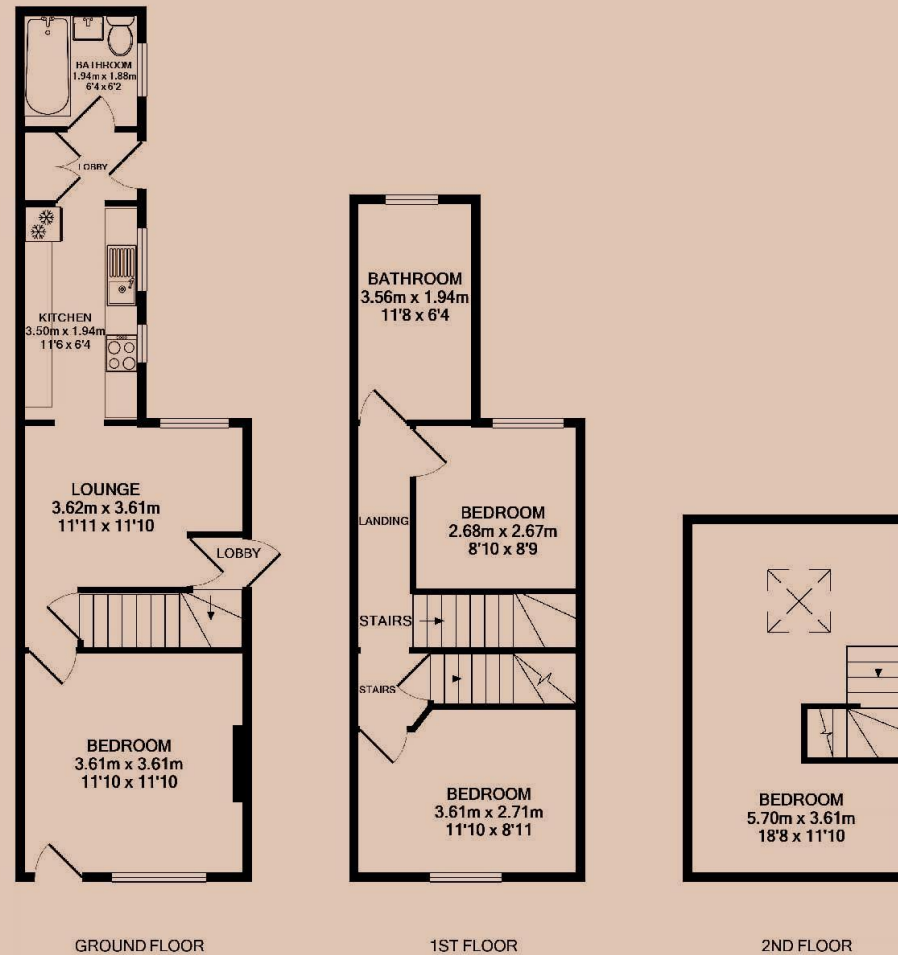
**Deposit**  
£1,000

**EPC**  
64 | D

**Council Tax Band**  
B

**ID**  
#1657

**Updated**  
07/11/2025





# *Have a property like this? Let's work together.*

Design and marketing are at the heart of our approach. With most people now looking for property online, we can get our clients' properties in front of as many people as the most prominent national agents. Where we differ is in the quality of our work. We create stunning digital particulars that highlight the individual attributes of every property we market, with videos and floor plans as standard.



**OUR OFFICE**  
7 Biggin Street  
Loughborough, LE11 1UA

**CONTACT US**  
01509 320 320  
let@huntleys.net

