



Selbourne Street
Loughborough

1 Bed Room In A Shared House • LE11 1BS • £475 pcm • £540 Deposit



Selbourne Street, Loughborough

A furnished, double BEDROOM in a SHARED HOUSE. Includes a stylish and furnished kitchen with appliances, spacious communal lounge and two shower rooms. A sizeable garden to the rear and non-restricted on street parking to the front. Bills included. Close to town centre and University. Now available to let. PLEASE NOTE: Photos and video tour are of a similar room in the same house.

Communal Lounge 4.58m (15'0) x 3.61m (11'10)

A spacious living room, including two sofas and a coffee table, the social hub of the property.

Communal Kitchen 3.97m (13'0) x 2.12m (6'11)

A modern kitchen situated to the rear of the property. This kitchen includes a fridge/freezer, washing machine and two cookers and hobs.

Bedroom 3.66m (12'0) x 3.61m (11'10)

A double bedroom, situated on the first floor. This room includes a double bed and mattress, wardrobe, sink and counter. Please note: the single beds will be replaced by one double bed.

Shower Room 2.12m (6'11) x 1.92m (6'4)

A shared wash room, situated at the rear of the property on the first floor. This room includes a walk in shower, toilet and sink.

Shower Room 2.12m (6'11) x 1.92m (6'4)

A second shared wash room, situated next to the other shower room. This room also includes a walk in shower, toilet and sink.

Parking

Non-restricted on street parking available to the front of the property.

Garden

A spacious garden to the rear, accessed via the kitchen external door.

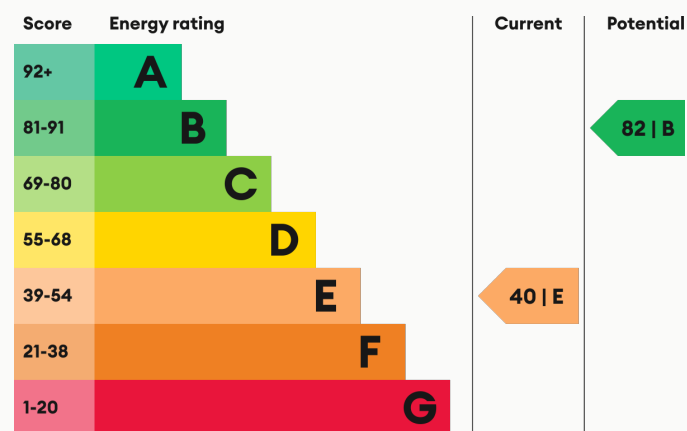
Heating

Gas-fired central heating.

Glazing

Modern, good quality, uPVC double glazing.

Energy Performance



We aim to make our particulars both accurate and reliable. However they are not guaranteed; nor do they form part of an offer or contract. If you require clarification on any points then please contact us, especially if you are traveling some distance to view. All measurements are to widest point.



Bedroom



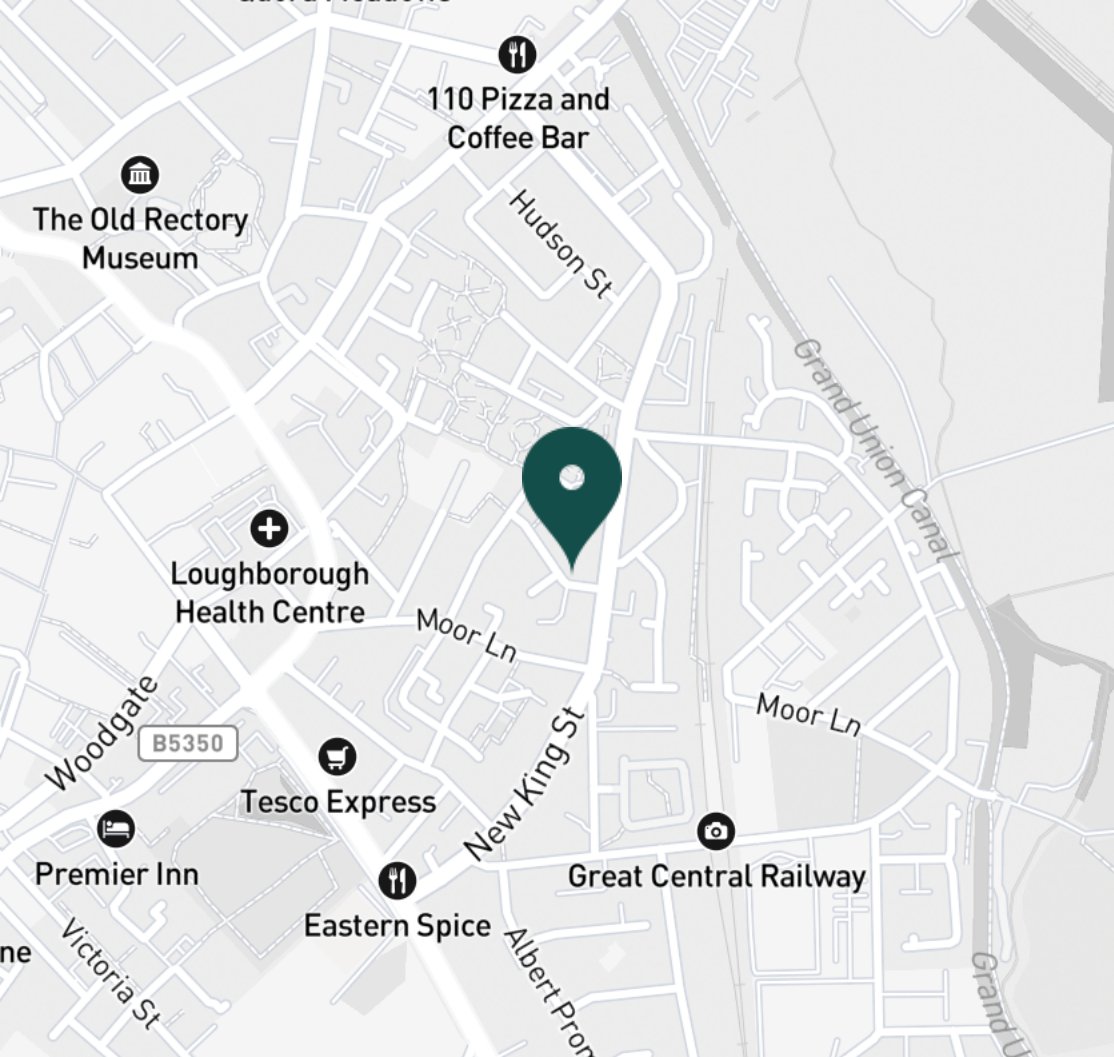
Bedroom



Lounge



Lounge



SUPERMARKETS

Marks & Spencer	0.6 mi
Sainsburys Loughborough	0.8 mi
Tesco Superstore Loughborough	1.1 mi
Aldi Loughborough	1.2 mi
Lidl Loughborough	1.3 mi

GYMS

Dynamite Gym Ltd	0.4 mi
NPC Performance Centre	0.4 mi
PureGym Loughborough	0.6 mi
Fit4Less	0.6 mi
CrossFit Loughborough	0.7 mi

TRAIN STATIONS

Loughborough	0.8 mi
Barrow upon Soar	3.6 mi
Sileby	5.4 mi
Syston	9.5 mi
South Wigston	10.6 mi

NURSERY SCHOOLS

Lime Tree Nursery	0.3 mi
Small World Nursery	0.7 mi
Westwards Nursery	0.7 mi
Emmanuel PS	0.8 mi
Cobden Childrens Centre	0.8 mi

PRIMARY SCHOOLS

Cobden PS	0.3 mi
Fairfield Preparatory Sch	0.4 mi
Rendell Primary School	0.7 mi
Loughborough Grammar Sch	0.8 mi
Loughborough High Sch	0.8 mi

HIGH SCHOOLS

Loughborough Grammar Sch	0.8 mi
Loughborough High Sch	0.8 mi
Limehurst Academy	0.8 mi
Our Lady's Convent Sch	0.9 mi
RNIB College Loughborough	1.2 mi

Discover
Loughborough



- ✓ House Share
- ✓ Bills Included
- ✓ Close to Town Centre
- ✓ Appliances Included
- ✓ Close to University
- ✓ Available Now





Lounge



Kitchen



Kitchen



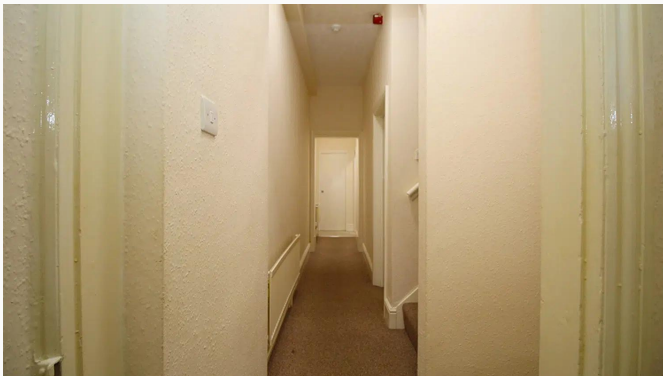
Kitchen



Shower Room



Shower Room



Landing



Selbourne Street



Garden



Garden

Available
From 14/05/2024

Comes
Furnished

Bedrooms
1

Receptions
1

Bathrooms
2

Parking
On Street

Postcode
LE11 1BS

Rent
£475 pcm

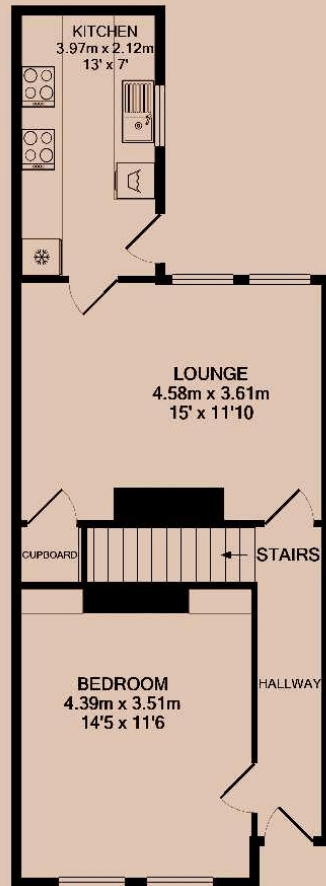
Deposit
£540

EPC
40 | E

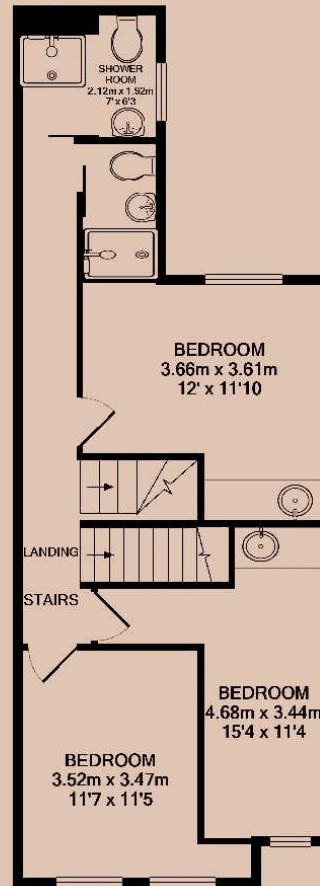
Council Tax Band
B

ID
#11771

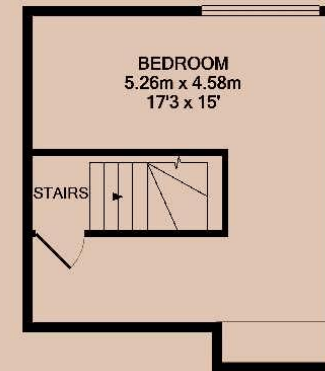
Updated
14/05/2024



GROUND FLOOR



1ST FLOOR



2ND FLOOR

Have a property like this? Let's work together.

Design and marketing are at the heart of our approach. With most people now looking for property online, we can get our clients' properties in front of as many people as the most prominent national agents. Where we differ is in the quality of our work. We create stunning digital particulars that highlight the individual attributes of every property we market, with videos and floor plans as standard.



OUR OFFICE
7 Biggin Street
Loughborough, LE11 1UA

CONTACT US
01509 320 320
let@huntleys.net

