



Villency Court
Loughborough

0 Bed 1st Floor Apartment • LE11 1EB • £700 pcm • £800 Deposit



Villency Court, Loughborough

A contemporary, studio apartment is located in this popular development. Situated on the first floor the apartment is furnished and presented in excellent condition. Its open-plan layout combined with its large feature window makes for a bright and warm space. The apartment is within a short walk of the restaurants and cinema of the new Baxtergate development as well as the mainline station (10 minutes by foot), with buses providing access to the surrounding areas. Secure gated parking for one car is included.

Studio 4.2m (13'10) x 3.35m (11')

Furnished with a fold-away double bed, fitted wardrobe and a corner sofa. Open to the kitchen via a breakfast bar.

Kitchen 4.2m (13'9) x 3.1m (10'2)

Good quality modern kitchen with dark wood style worktop and gloss white cabinets. Includes, dishwasher, fridge freezer, oven, hob and a washing machine. Open-plan to the studio area with breakfast bar, including two bar stools.

Bathroom 2.2m (7'3) x 2m (6'7)

Modern three piece bathroom suite complete with shower over the bath. A fitted mirror, heated towel rail. Tiled flooring completes the look.

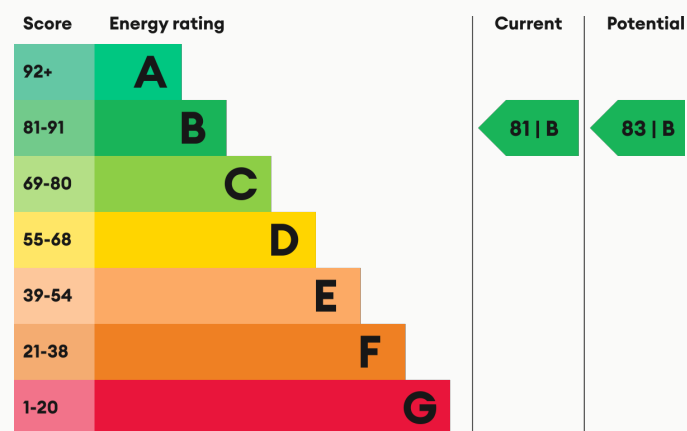
Parking

Secure parking for one car behind the electric gates.

Glazing

Modern, good quality, uPVC double glazing.

Energy Performance



We aim to make our particulars both accurate and reliable. However they are not guaranteed; nor do they form part of an offer or contract. If you require clarification on any points then please contact us, especially if you are traveling some distance to view. All measurements are to widest point.



Kitchen



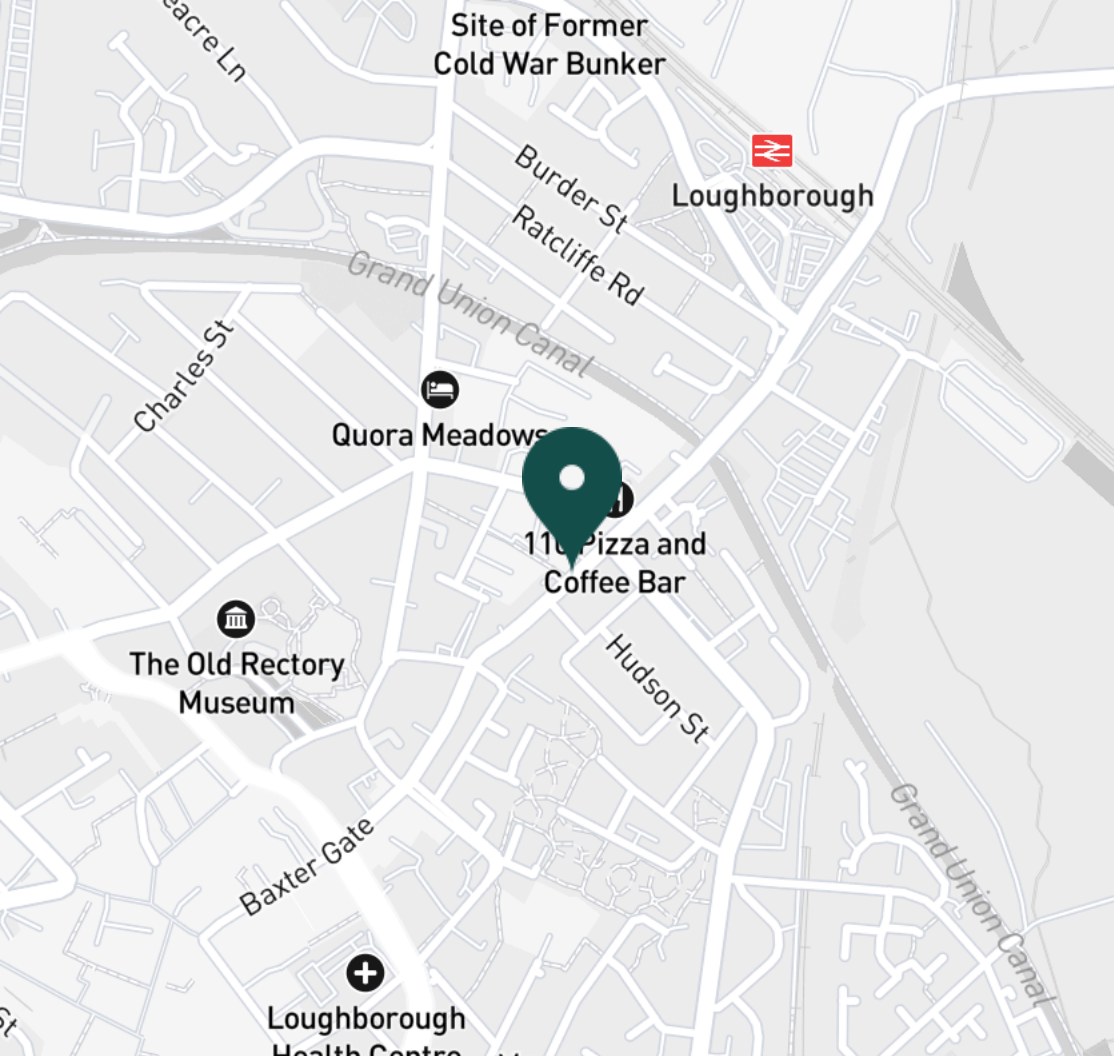
Kitchen



Kitchen



Studio



SUPERMARKETS

Tesco Superstore Loughborough	0.6 mi
Marks & Spencer	0.7 mi
Aldi Loughborough	0.8 mi
Lidl Loughborough	0.9 mi
Sainsburys Loughborough	1.0 mi

GYMS

CrossFit Loughborough	0.2 mi
PureGym Loughborough	0.5 mi
Anytime Fitness Loughborough	0.6 mi
Dynamite Gym Ltd	0.6 mi
NPC Performance Centre	1.0 mi

TRAIN STATIONS

Loughborough	0.5 mi
Barrow upon Soar	4.1 mi
Sileby	5.9 mi
East Midlands Parkway	10.3 mi
Syston	10.9 mi

NURSERY SCHOOLS

Babblebrooke Day Nursery	0.5 mi
Cobden Childrens Centre	0.6 mi
Lime Tree Nursery	0.8 mi
Small World Nursery	0.8 mi
Emmanuel PS	1.0 mi

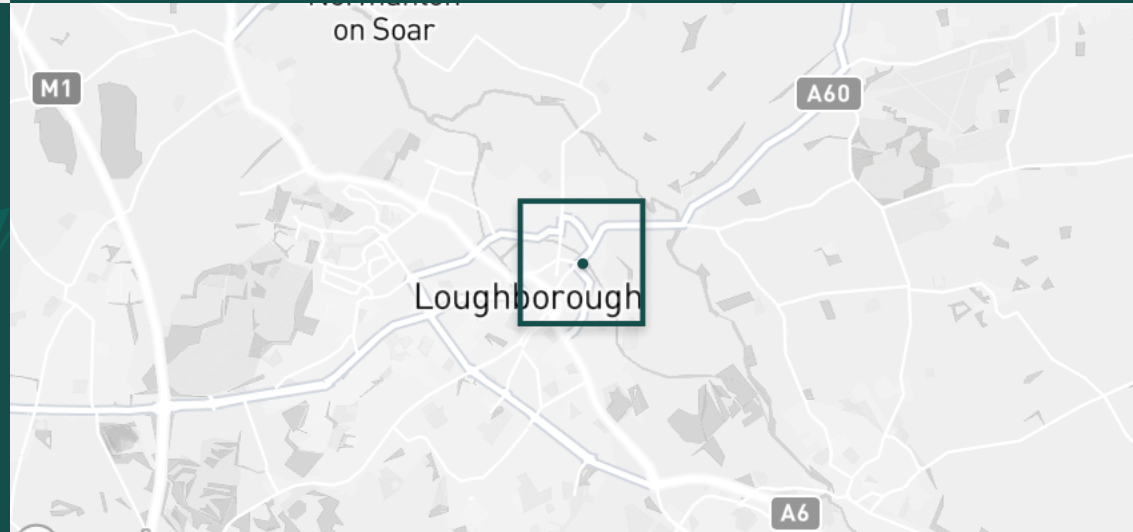
PRIMARY SCHOOLS

Rendell Primary School	0.3 mi
Cobden PS	0.9 mi
Fairfield Preparatory Sch	0.9 mi
St Marys Catholic PS	1.1 mi
Loughborough CE PS	1.3 mi

HIGH SCHOOLS

Limehurst Academy	0.4 mi
Loughborough Grammar Sch	1.3 mi
RNIB College Loughborough	1.3 mi
Loughborough High Sch	1.3 mi
Our Lady's Convent Sch	1.5 mi

Discover
Loughborough

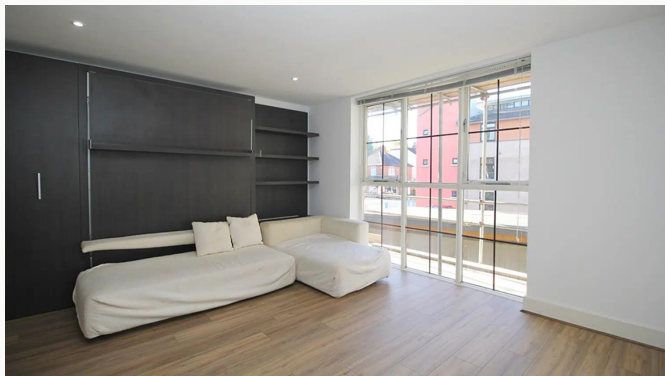


- ✓ Contemporary apartment
- ✓ Central location
- ✓ Furnished to a high standard
- ✓ Secure parking
- ✓ Open plan studio
- ✓ First floor





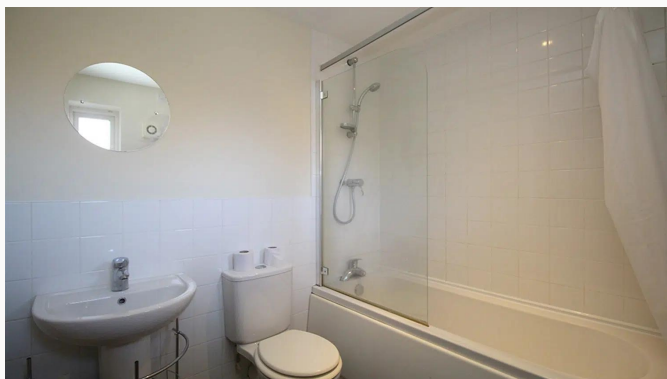
Studio



Studio



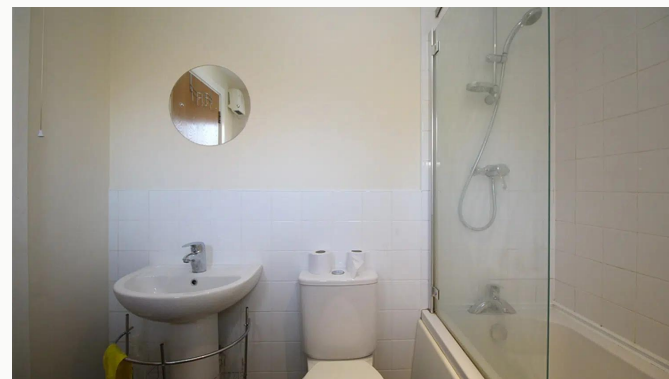
Studio



Bathroom



Bathroom



Bathroom



Entrance Hallway



Villency Court



Car Park

Available
From 09/12/2024

Comes
Furnished

Bedrooms
0

Receptions
1

Bathrooms
1

Parking
Allocated

Postcode
LE11 1EB

Rent
£700 pcm

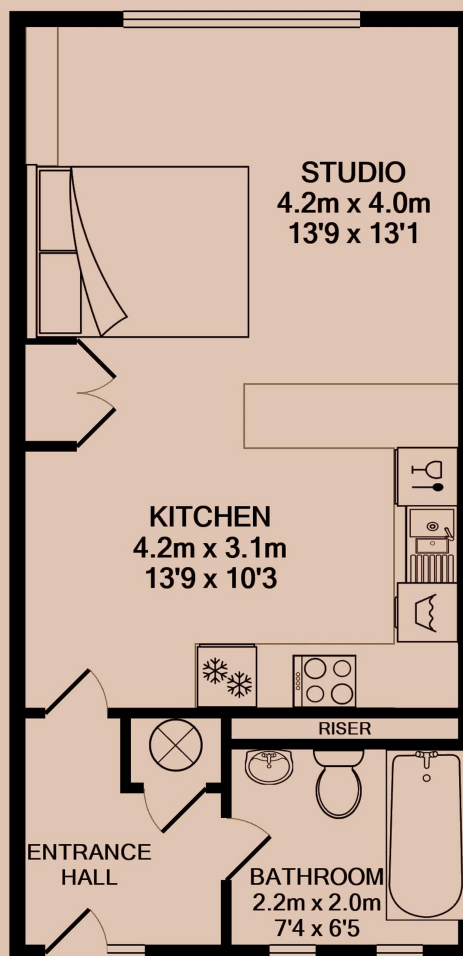
Deposit
£800

EPC
81 | B

Council Tax Band
A

ID
#7059

Updated
26/11/2024



Have a property like this? Let's work together.

Design and marketing are at the heart of our approach. With most people now looking for property online, we can get our clients' properties in front of as many people as the most prominent national agents. Where we differ is in the quality of our work. We create stunning digital particulars that highlight the individual attributes of every property we market, with videos and floor plans as standard.



OUR OFFICE
7 Biggin Street
Loughborough, LE11 1UA

CONTACT US
01509 320 320
let@huntleys.net



Huntleys

