



*The Gate*  
Loughborough

2 Bed Top Floor Apartment • LE11 1GJ • £1,375 pcm • £1,580 Deposit



## *The Gate, Loughborough*

Set in the highest specification development that Loughborough has to offer. This premium, two double bedroom top-floor apartment is soon ready for occupation. In the developers own words "The Gate offers a prestigious collection of luxury apartments with residents gym, residents swimming pool, communal 'hot desk' area and meeting room, parking, daily concierge service. This new 'Waterside Village' offers the perfect live, work and play living experience". All photos are of actual property. Virtual tour available now.

### Lounge / Diner

Contemporary living area that is open plan to the kitchen and runs the full depth of the apartment. Featured floor-to-ceiling window, USB equipped PowerPoints and underfloor heating.

### Kitchen

A Pullman kitchen in charcoal with matching worktop and brick-bond tiling. Hidden away behind the smart cabinets there are all the integrated appliances including a fridge-freezer, dual ovens, washer-dryer, easy-clean hob and a dishwasher. Open plan to the living area.

### Master Bedroom

Elegant and spacious bedroom with benefits of an en-suite shower room featured floor-to-ceiling window, USB equipped PowerPoints and underfloor heating.

### Bedroom Two

Generously proportioned, with dimensions almost identical to the Master bedroom, featured floor-to-ceiling window, USB equipped PowerPoints and underfloor heating.

### Bathroom

This beautiful three-piece bathroom comes complete with a "rain shower" head over the bath, heated towel rail and shaving point. Classic, brick-bond tiling completes the look.

### Ensuite

A three-piece en-suite shower room with a matching finish to the bathroom, heated towel rail and shaving point. Classic, brick-bond tiling completes the look.

### Swimming Pool

A communal swimming pool, available for "The Gate" residents use only.

### Gym

A communal gymnasium, kitted out with high-spec equipment, available for "The Gate" residents.

For more information about this property, visit our website [huntleys.net](http://huntleys.net).

### Energy Performance

Score	Energy rating	Current	Potential
92+	A		
81-91	B	83   B	83   B
69-80	C		
55-68	D		
39-54	E		
21-38	F		
1-20	G		

We aim to make our particulars both accurate and reliable. However they are not guaranteed; nor do they form part of an offer or contract. If you require clarification on any points then please contact us, especially if you are traveling some distance to view. All measurements are to widest point.



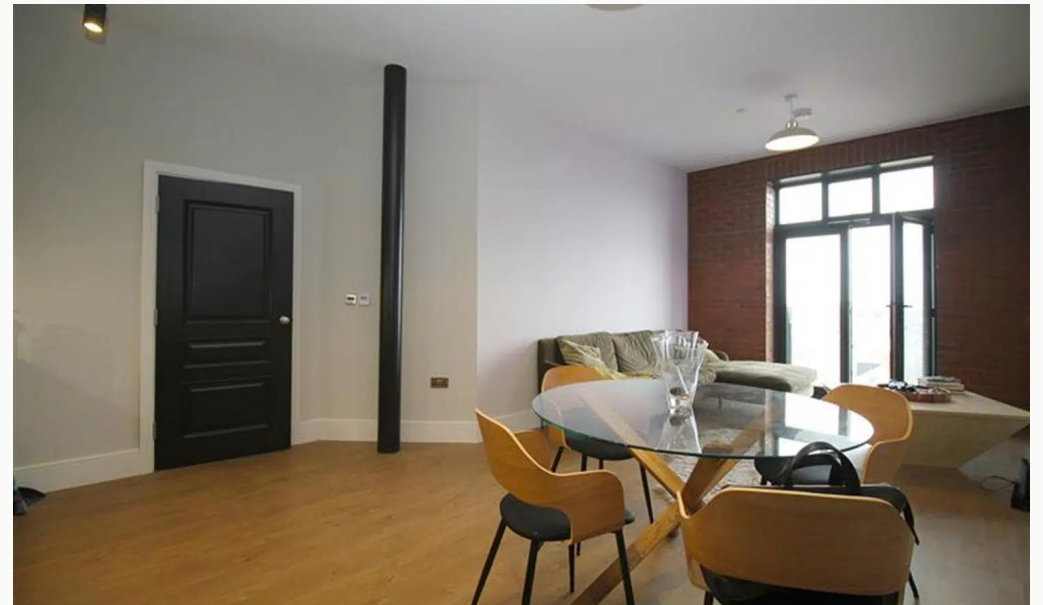
Lounge / Kitchen



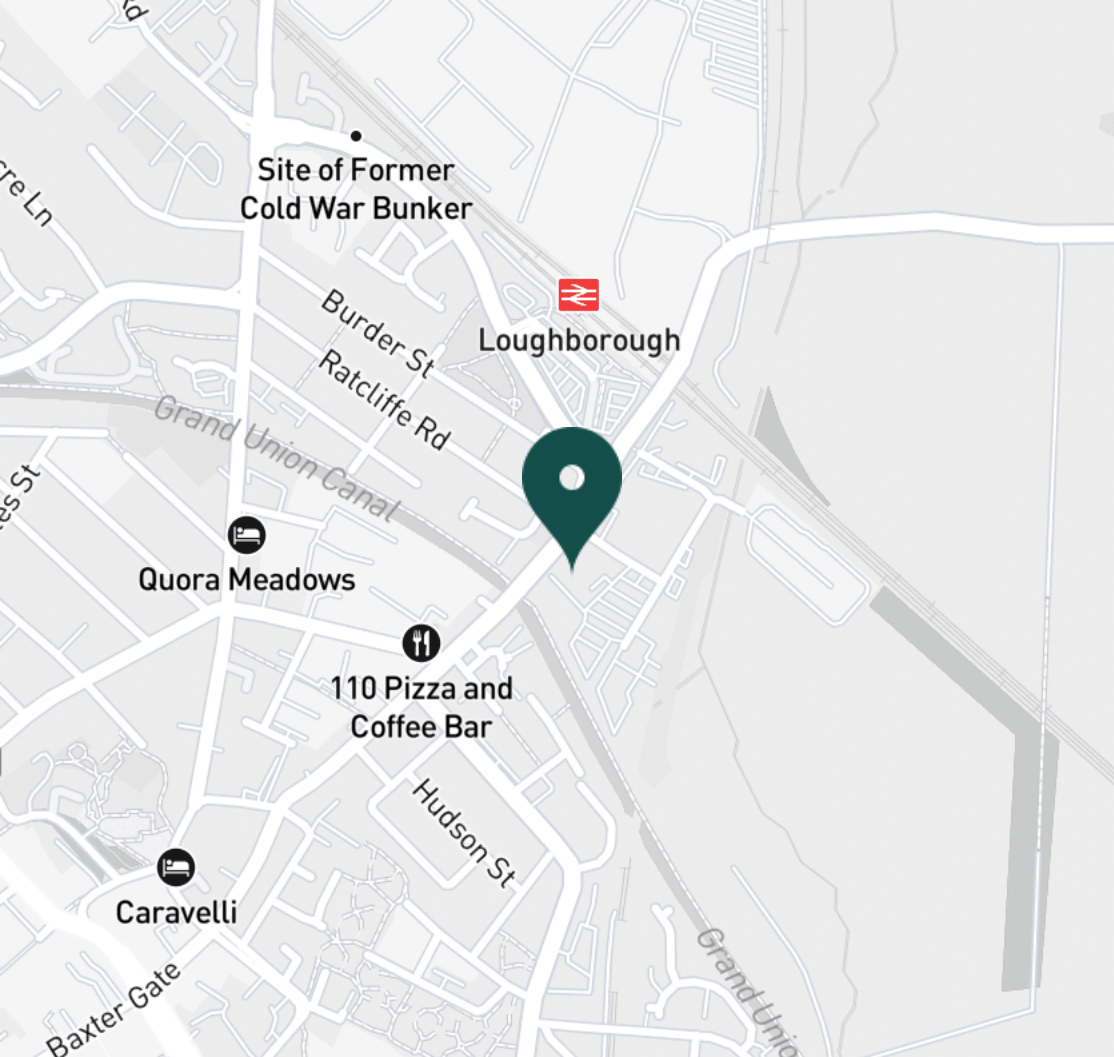
Lounge / Kitchen



Lounge / Kitchen



Lounge / Kitchen



#### SUPERMARKETS

Tesco Superstore Loughborough	0.7 mi
Marks & Spencer	0.8 mi
Aldi Loughborough	0.9 mi
Lidl Loughborough	1.0 mi
Sainsburys Loughborough	1.1 mi

#### GYMS

CrossFit Loughborough	0.4 mi
PureGym Loughborough	0.6 mi
Anytime Fitness Loughborough	0.7 mi
Dynamite Gym Ltd	0.7 mi
NPC Performance Centre	0.9 mi

#### TRAIN STATIONS

Loughborough	0.3 mi
Barrow upon Soar	3.8 mi
Sileby	5.9 mi
Syston	10.2 mi
East Midlands Parkway	10.4 mi

#### NURSERY SCHOOLS

Cobden Childrens Centre	0.5 mi
Babblebrooke Day Nursery	0.6 mi
Lime Tree Nursery	0.7 mi
Small World Nursery	1.0 mi
Emmanuel PS	1.1 mi

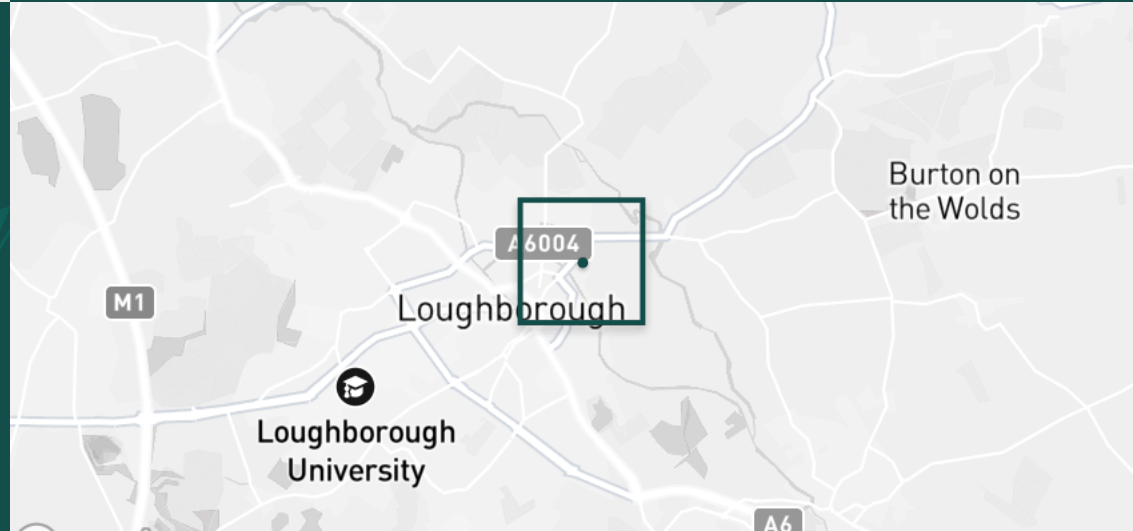
#### PRIMARY SCHOOLS

Rendell Primary School	0.4 mi
Cobden PS	0.7 mi
Fairfield Preparatory Sch	0.9 mi
St Marys Catholic PS	1.0 mi
Our Lady's Convent Sch	1.2 mi

#### HIGH SCHOOLS

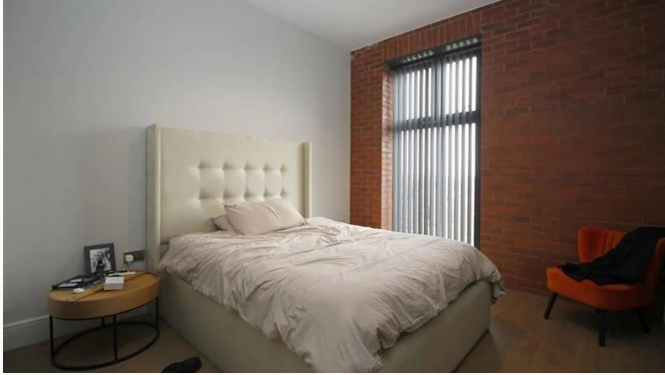
Limehurst Academy	0.5 mi
Our Lady's Convent Sch	1.2 mi
Loughborough High Sch	1.3 mi
RNIB College Loughborough	1.4 mi
Loughborough Grammar Sch	1.6 mi

Discover  
*Loughborough*



- ✓ Swimming Pool
- ✓ Gym
- ✓ Concierge
- ✓ Underfloor Heating
- ✓ Ensuite
- ✓ Top Floor





Master Bedroom



Master Bedroom



Master Bedroom



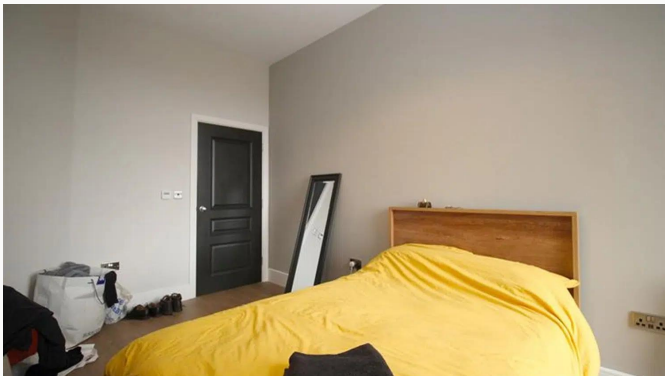
Ensuite



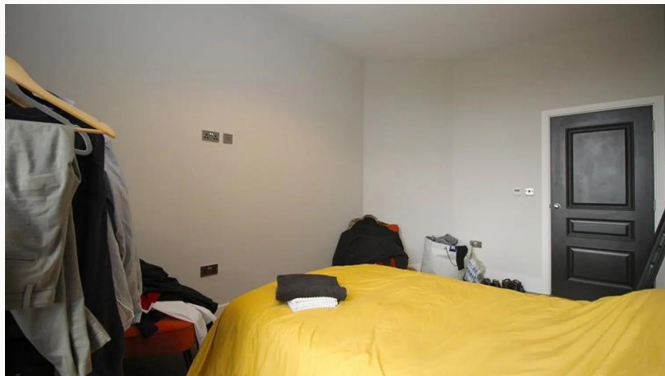
Ensuite



Bedroom Two



Bedroom Two



Bedroom Two



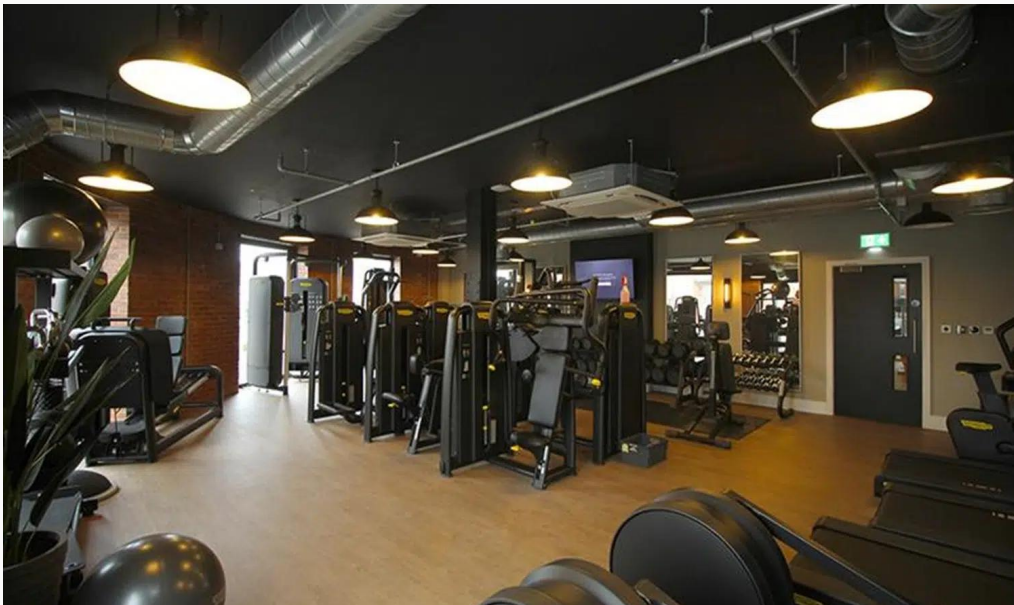
Bathroom



Swimming Pool



Gym



Gym



Gym



Gym



The Gate

**Available**  
From 22/05/2026

**Comes**  
Unfurnished

**Bedrooms**  
2

**Receptions**  
1

**Bathrooms**  
2

**Parking**  
Ask Agent

**Postcode**  
LE11 1GJ

**Rent**  
£1,375 pcm

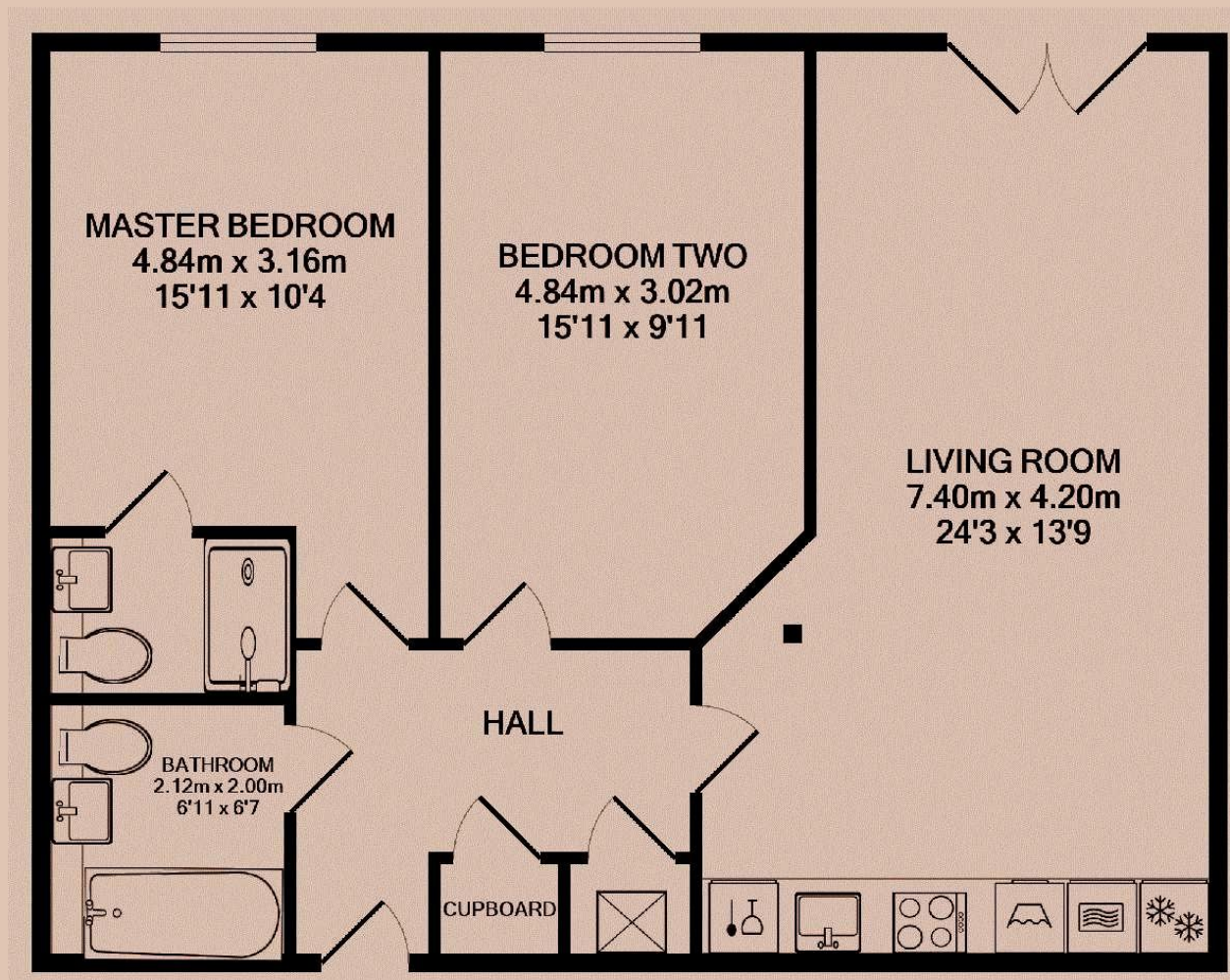
**Deposit**  
£1,580

**EPC**  
83 | B

**Council Tax Band**  
B

**ID**  
#15189

**Updated**  
16/05/2026



# *Have a property like this? Let's work together.*

Design and marketing are at the heart of our approach. With most people now looking for property online, we can get our clients' properties in front of as many people as the most prominent national agents. Where we differ is in the quality of our work. We create stunning digital particulars that highlight the individual attributes of every property we market, with videos and floor plans as standard.



**OUR OFFICE**  
7 Biggin Street  
Loughborough, LE11 1UA

**CONTACT US**  
01509 320 320  
let@huntleys.net

