

A photograph of a detached bungalow on Woodbrook Road, Loughborough. The house is a single-story brick building with a tiled roof and a white front door. It features a large cobblestone driveway where two cars are parked: a dark blue Toyota Aygo with license plate W022 GGY and a blue Citroën C3 with license plate BT6U XYZ. The property is bordered by a brick wall on the left and a brick pillar with the number 24 on the right. The background shows lush green trees under a blue sky with scattered white clouds.

Woodbrook Road

Loughborough

2 Bed Detached Bungalow • LE11 3QD • £1,050 pcm • £1,210 Deposit



Woodbrook Road, Loughborough

Available to let, a spacious, detached, unfurnished two bedroom bungalow, situated in Loughborough. This property comes with a large lounge, sun room, two double bedrooms, kitchen and bathroom. To the rear is a large private garden with shed and single garage. To the front is a sizeable driveway for ample parking space.

Lounge

A large living room situated at the front of the property with two windows to allow for additional natural light.

Sun Room

A beautiful sun room situated at the rear of the property overlooking the rear garden. This room is accessed via the second bedroom/sitting room.

Kitchen

A practical kitchen overlooking the rear garden with external access to the side of the property. Includes an oven, gas hob and fridge/freezer.

Master Bedroom

A large double bedroom situated at the front of the property, includes built in wardrobes that span the length of the room.

Bedroom Two / Sitting Room

A second double bedroom, currently being used as a sitting room. Sun light in the ceiling gives natural light and gives access by folding glass doors to the sun room.

Bathroom

An elegant three piece bathroom including a bath, sink, toilet and shower above the bath.

Water Closet

A quaint water closet situated next to the front entrance, includes toilet and sink.

Parking

A sizeable driveway allowing access to the front and side of the property, with a single garage included.

Garden

A beautiful, large, private garden to the rear of the property. Includes a shed for storage.

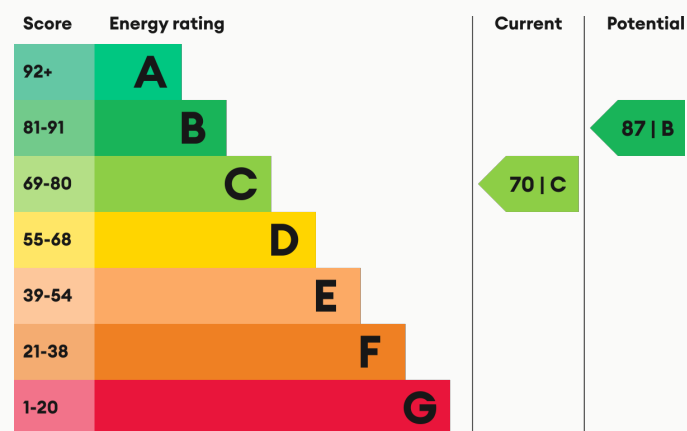
Heating

Gas-fired central heating.

Glazing

Modern, good quality, uPVC double glazing.

Energy Performance



We aim to make our particulars both accurate and reliable. However they are not guaranteed; nor do they form part of an offer or contract. If you require clarification on any points then please contact us, especially if you are traveling some distance to view. All measurements are to widest point.



Kitchen



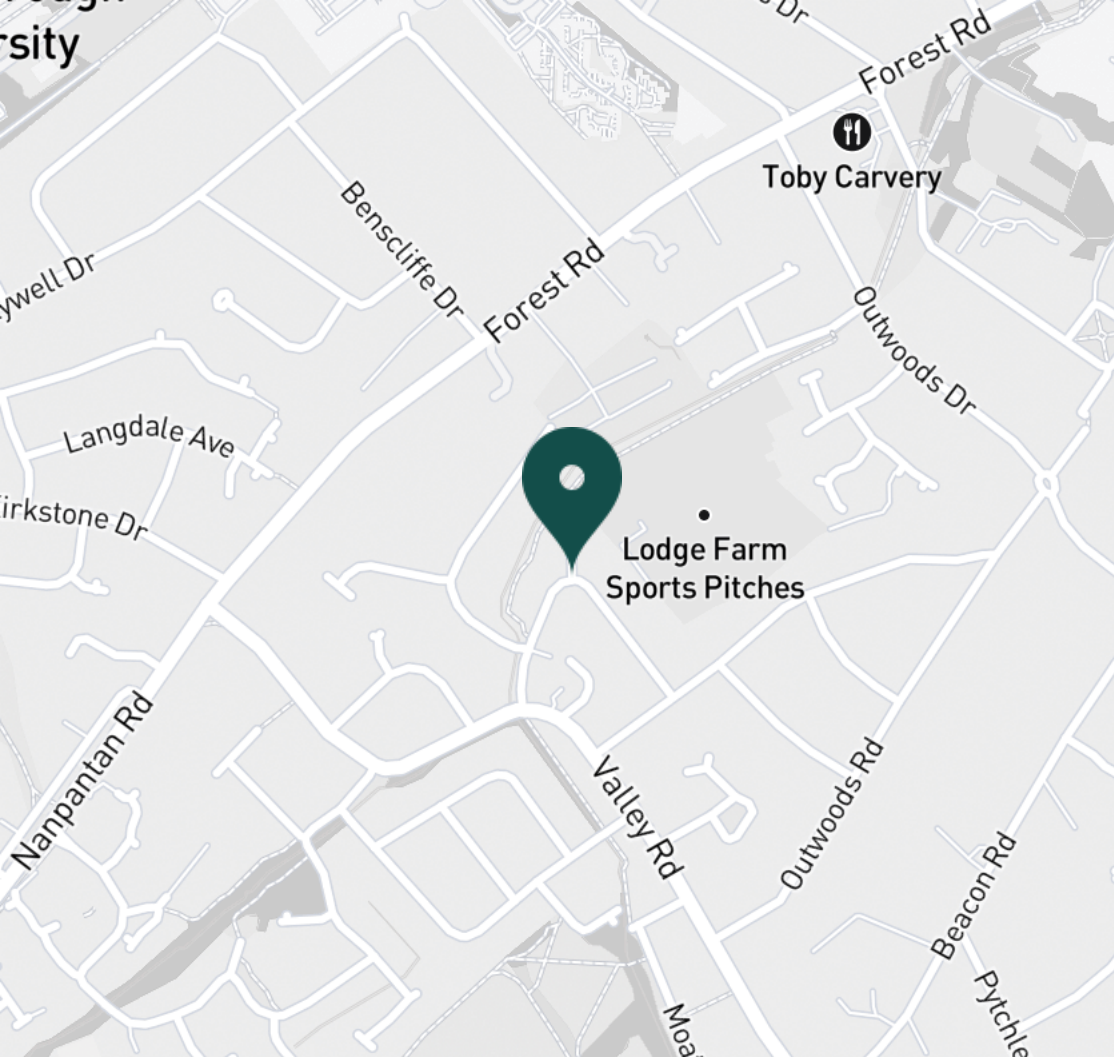
Kitchen



Kitchen



Living Room



SUPERMARKETS

Tesco Extra Loughborough	1.4 mi
Co-op Food Knightthorpe Rd	2.2 mi
Tesco Superstore Loughborough	2.2 mi
Marks & Spencer	2.4 mi
Sainsburys Loughborough	2.4 mi

GYMS

Radmoor Centre	1.5 mi
Loughborough University Pool	1.6 mi
Loughborough Sport	1.7 mi
Fit4Less	1.8 mi
Dynamite Gym Ltd	1.9 mi

TRAIN STATIONS

Loughborough	2.8 mi
Barrow upon Soar	4.4 mi
Sileby	6.3 mi
Syston	10.3 mi
South Wigston	11.5 mi

NURSERY SCHOOLS

Parkside PS	1.1 mi
Nanpantan Nursery School	1.2 mi
Emmanuel PS	1.4 mi
Westwards Nursery	1.5 mi
Shelthorpe Childrens Centre	1.7 mi

PRIMARY SCHOOLS

Holywell PS	0.9 mi
Sacred Heart Catholic PS	0.9 mi
Mountfields Lodge Sch	1.1 mi
Outwoods Edge PS	1.4 mi
Our Lady's Convent Sch	1.5 mi

HIGH SCHOOLS

Woodbrook Vale	0.9 mi
Our Lady's Convent Sch	1.5 mi
Loughborough College	1.5 mi
Lboro Uni School Of The Arts	1.5 mi
Loughborough Grammar Sch	2.3 mi

Discover
Loughborough



- ✓ Bungalow
- ✓ Two Double Bedrooms
- ✓ Sun Room
- ✓ Garage
- ✓ Private Garden
- ✓ Loughborough





Living Room



Living Room



Master Bedroom



Master Bedroom



Bedroom



Bedroom



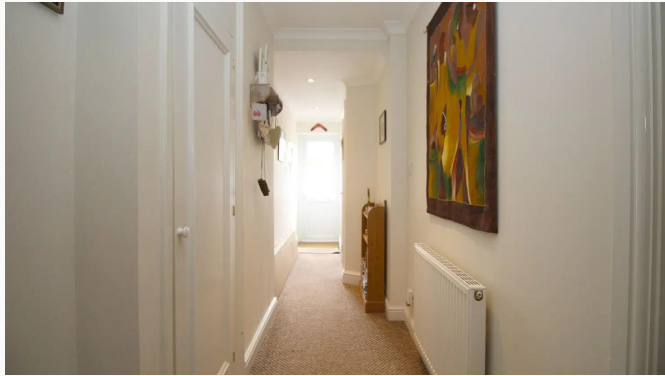
Bedroom



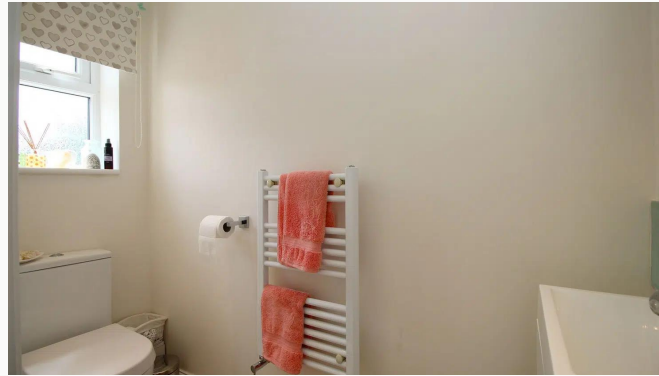
Conservatory



Conservatory



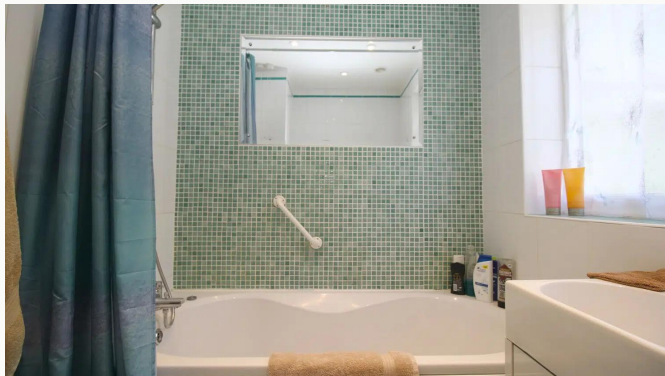
Hallway



W/C



Bathroom



Bathroom



Garden



Garden



Garden



Garage



Woodbrook Road



Woodbrook Road



Woodbrook Road

Available
From 10/03/2026

Comes
Unfurnished

Bedrooms
2

Receptions
1

Bathrooms
1

Parking
Driveway

Postcode
LE11 3QD

Rent
£1,050 pcm

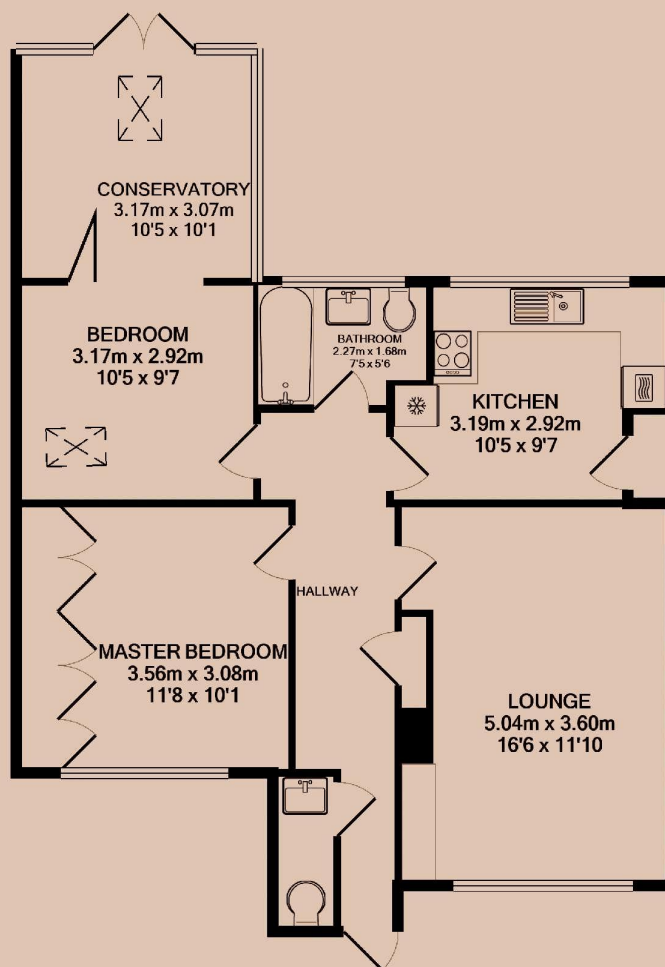
Deposit
£1,210

EPC
70 | C

Council Tax Band
C

ID
#10591

Updated
09/02/2026



Have a property like this? Let's work together.

Design and marketing are at the heart of our approach. With most people now looking for property online, we can get our clients' properties in front of as many people as the most prominent national agents. Where we differ is in the quality of our work. We create stunning digital particulars that highlight the individual attributes of every property we market, with videos and floor plans as standard.



OUR OFFICE
7 Biggin Street
Loughborough, LE11 1UA

CONTACT US
01509 320 320
let@huntleys.net

