



The Mill Loughborough

2 Bed Top Floor Apartment • LE11 1FU • £1,350 pcm • £1,550 Deposit



The Mill, Loughborough

Set in the highest specification development that Loughborough has to offer. This premium, two double bed, fifth floor apartment is ready for occupation. In the developers own words "The Mill offers a prestigious collection of luxury apartments with residents gym, communal 'hot desk' area and meeting room, parking, daily concierge service~. This new 'Waterside Village' offers the perfect live, work and play living experience". Views of the Canal. Underfloor heating throughout. PLEASE NOTE: Photos/video tour are of similar apartment in the same block.

Lounge / Diner

An elegant living space, open to the kitchen, including French doors with a Juliet balcony with top floor views.

Kitchen

A contemporary kitchen in grey with matching worktop. Hidden away behind the smart cabinets there are all the integrated appliances you'll need including fridge freezer, dual oven, washer-dryer, easy clean hob and a dishwasher. Open plan to the dining and living area.

Master Bedroom

A bright double bedroom with large windows. Access to the ensuite shower room.

Bedroom Two

Boasting similar dimensions to the Master Bedroom, this double bedroom also large windows.

Bathroom

This beautiful four piece bathroom comes complete with a separate walk-in "rain shower", heated towel rail, shaving point and underfloor heating. Classic, brick-bond tiling completes the look.

Ensuite

Matching the main bathroom in style, this shower room compliments the Master Bedroom.

Gym

A communal gymnasium with high spec equipment, located within The Mill block for The Mill residents use only.

Parking

Allocated parking for two cars within The Waterside Village car park.

Underfloor Heating

Underfloor central heating throughout.

Glazing

Modern, good quality, uPVC double glazing.

Energy Performance

Score	Energy rating	Current	Potential
92+	A		
81-91	B	85 B	85 B
69-80	C		
55-68	D		
39-54	E		
21-38	F		
1-20	G		

We aim to make our particulars both accurate and reliable. However they are not guaranteed; nor do they form part of an offer or contract. If you require clarification on any points then please contact us, especially if you are traveling some distance to view. All measurements are to widest point.



Lounge / Diner



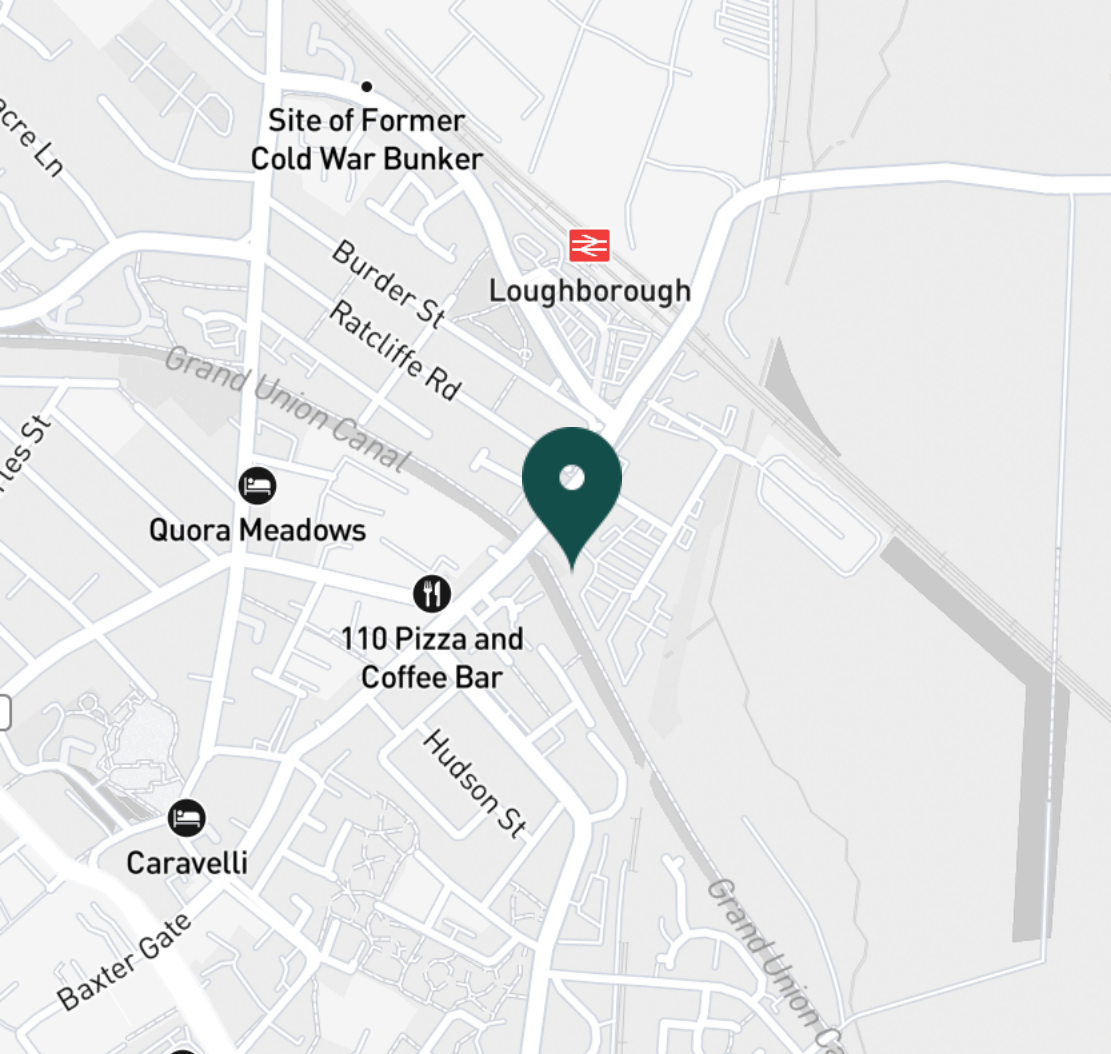
Lounge / Diner



Kitchen



Master Bedroom



SUPERMARKETS

Marks & Spencer	0.8 mi
Tesco Superstore Loughborough	0.9 mi
Aldi Loughborough	1.1 mi
Lidl Loughborough	1.2 mi
Sainsburys Loughborough	1.3 mi

GYMS

CrossFit Loughborough	0.6 mi
PureGym Loughborough	0.8 mi
Anytime Fitness Loughborough	0.9 mi
Dynamite Gym Ltd	0.9 mi
NPC Performance Centre	1.1 mi

TRAIN STATIONS

Loughborough	0.4 mi
Barrow upon Soar	4.2 mi
Sileby	6.1 mi
East Midlands Parkway	10.6 mi
Syston	11.0 mi

NURSERY SCHOOLS

Cobden Childrens Centre	0.7 mi
Babblebrooke Day Nursery	0.8 mi
Lime Tree Nursery	0.9 mi
Small World Nursery	1.2 mi
Emmanuel PS	1.3 mi

PRIMARY SCHOOLS

Rendell Primary School	0.6 mi
Cobden PS	1.0 mi
Fairfield Preparatory Sch	1.1 mi
St Marys Catholic PS	1.4 mi
Loughborough Grammar Sch	1.4 mi

HIGH SCHOOLS

Limehurst Academy	0.7 mi
Loughborough Grammar Sch	1.4 mi
Our Lady's Convent Sch	1.4 mi
Loughborough High Sch	1.4 mi
RNIB College Loughborough	1.6 mi

Discover
Loughborough

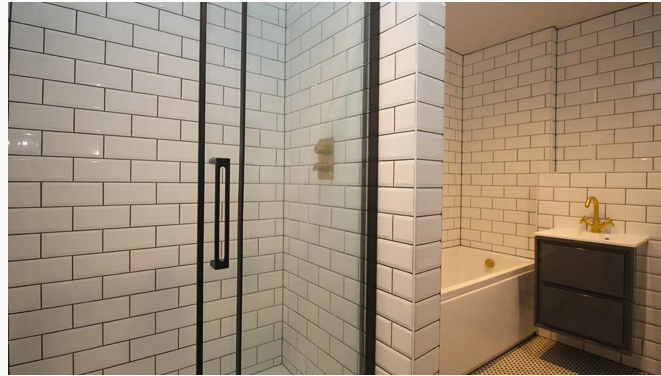


- ✓ Converted Mill
- ✓ Canal Views
- ✓ Two Double Bedrooms
- ✓ Communal Gym
- ✓ Ensuite
- ✓ Concierge

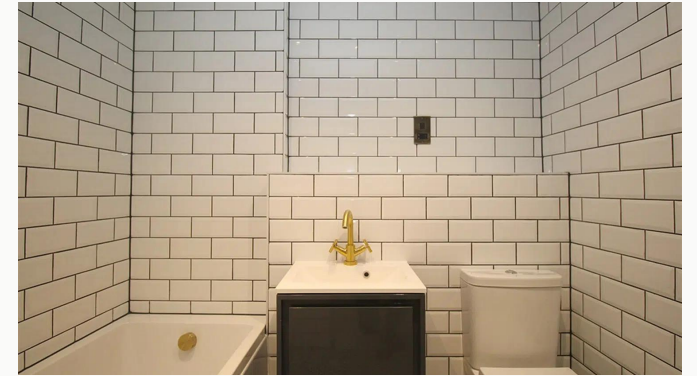




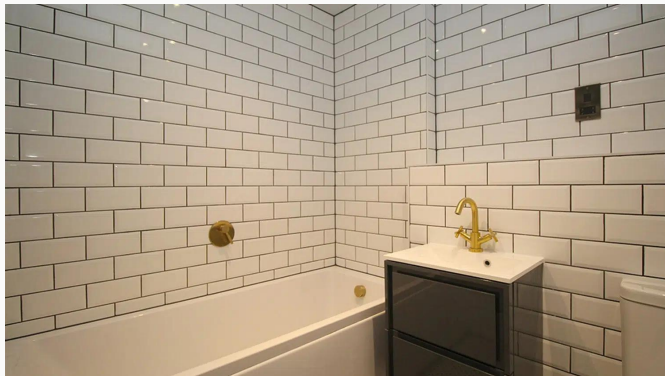
Bedroom Two



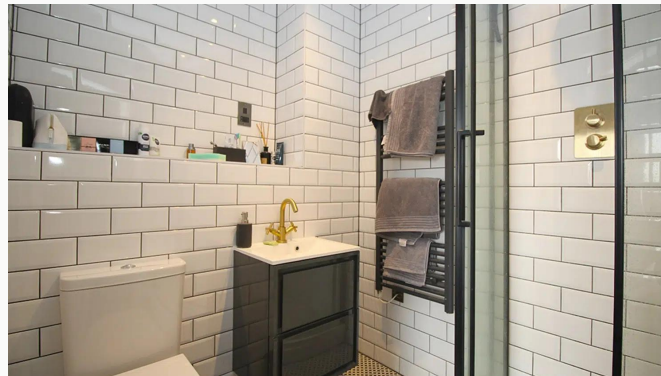
Bathroom



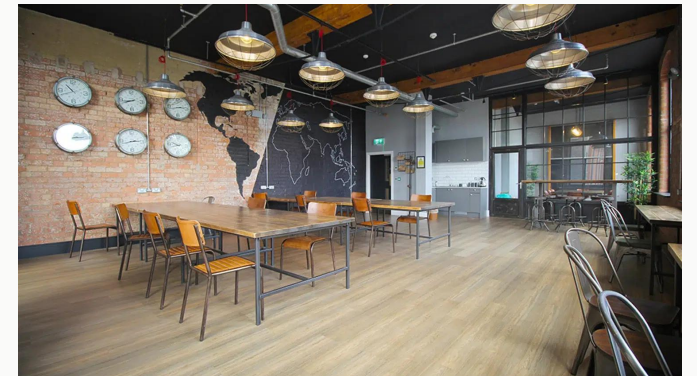
Bathroom



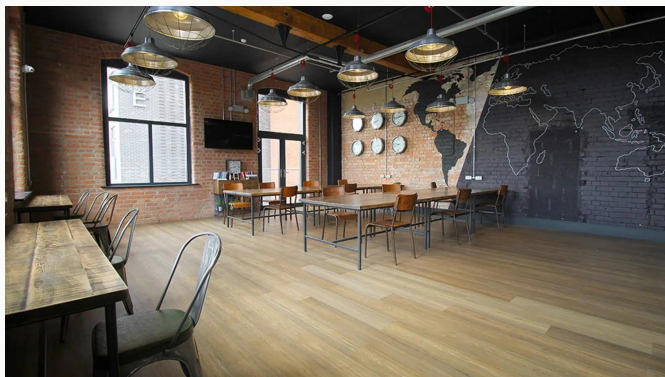
Bathroom



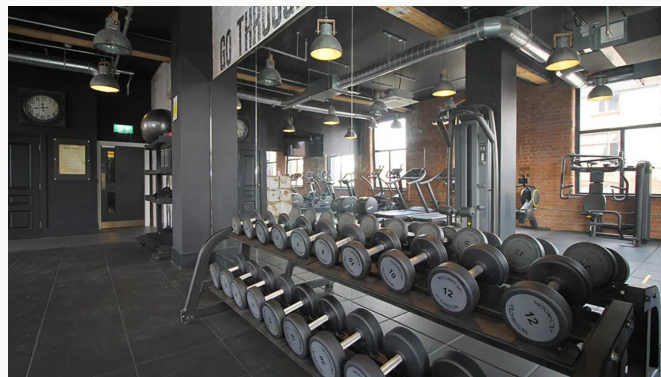
Ensuite



Office Area



Office Area



Gym



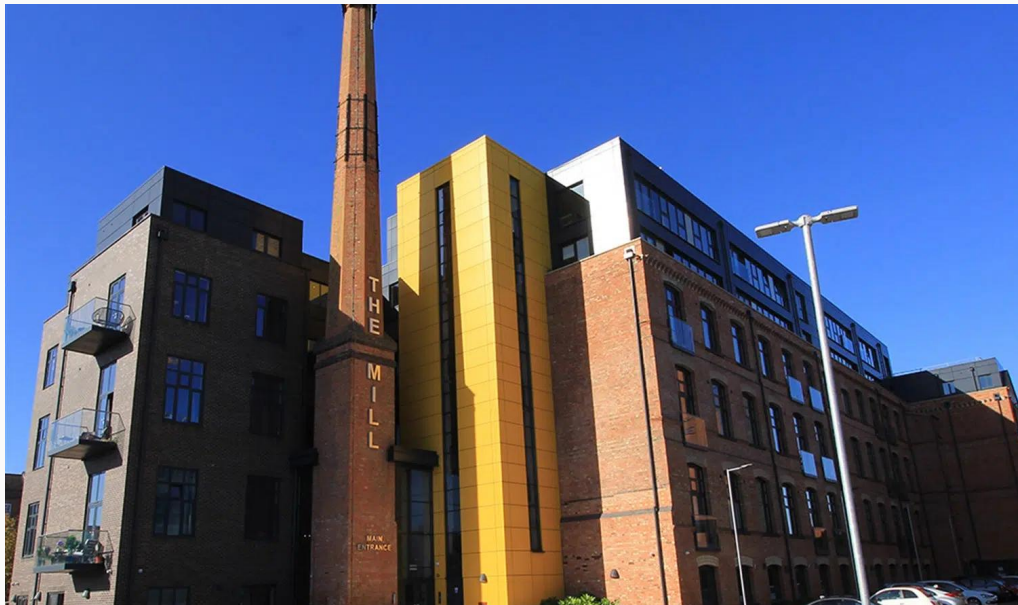
Gym



Gym



The Mill



The Mill

Available
From 02/07/2025

Comes
Unfurnished

Bedrooms
2

Receptions
1

Bathrooms
2

Parking
Allocated

Postcode
LE11 1FU

Rent
£1,350 pcm

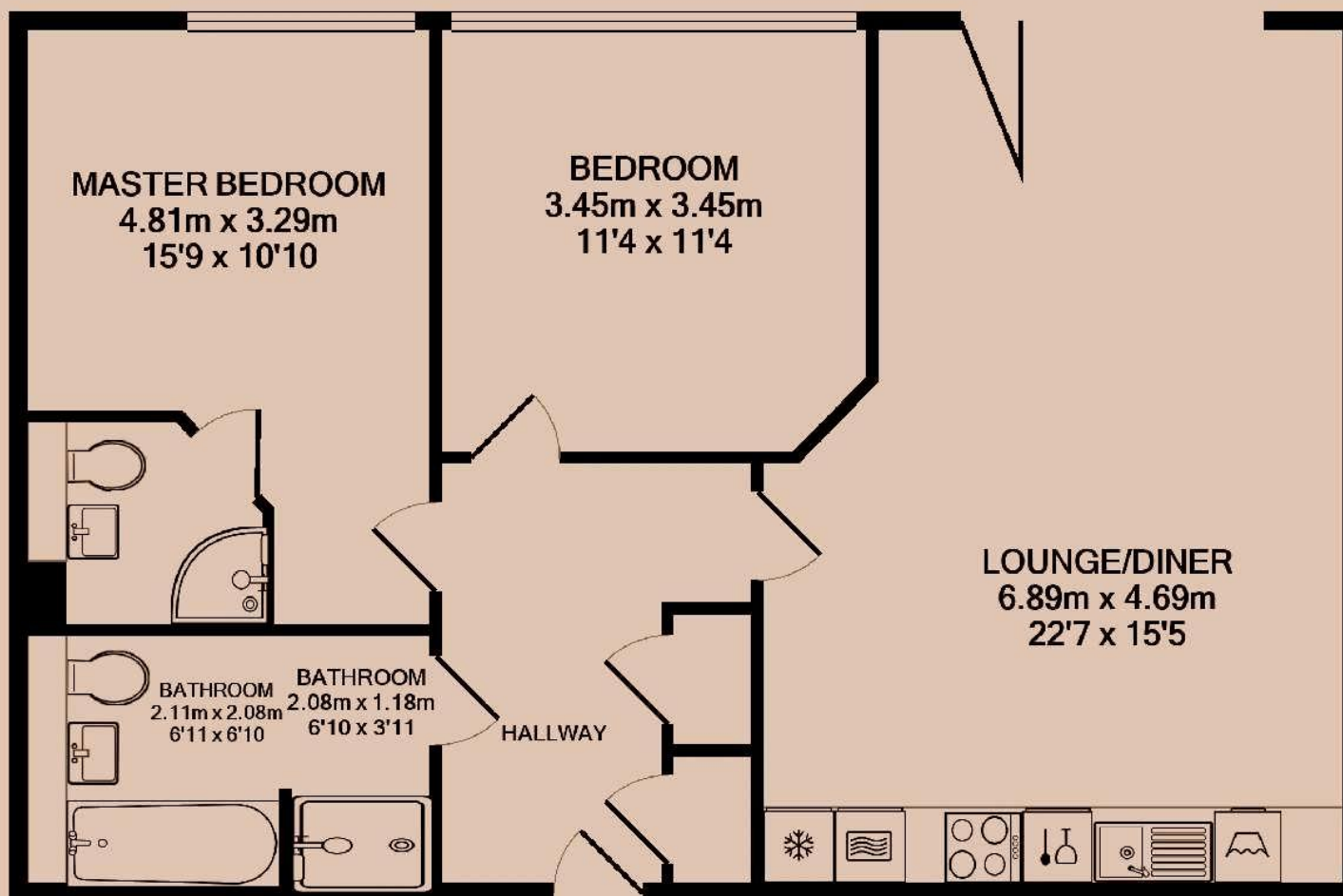
Deposit
£1,550

EPC
85 | B

Council Tax Band
C

ID
#8508

Updated
30/05/2025



Have a property like this? Let's work together.

Design and marketing are at the heart of our approach. With most people now looking for property online, we can get our clients' properties in front of as many people as the most prominent national agents. Where we differ is in the quality of our work. We create stunning digital particulars that highlight the individual attributes of every property we market, with videos and floor plans as standard.



OUR OFFICE
7 Biggin Street
Loughborough, LE11 1UA

CONTACT US
01509 320 320
let@huntleys.net

