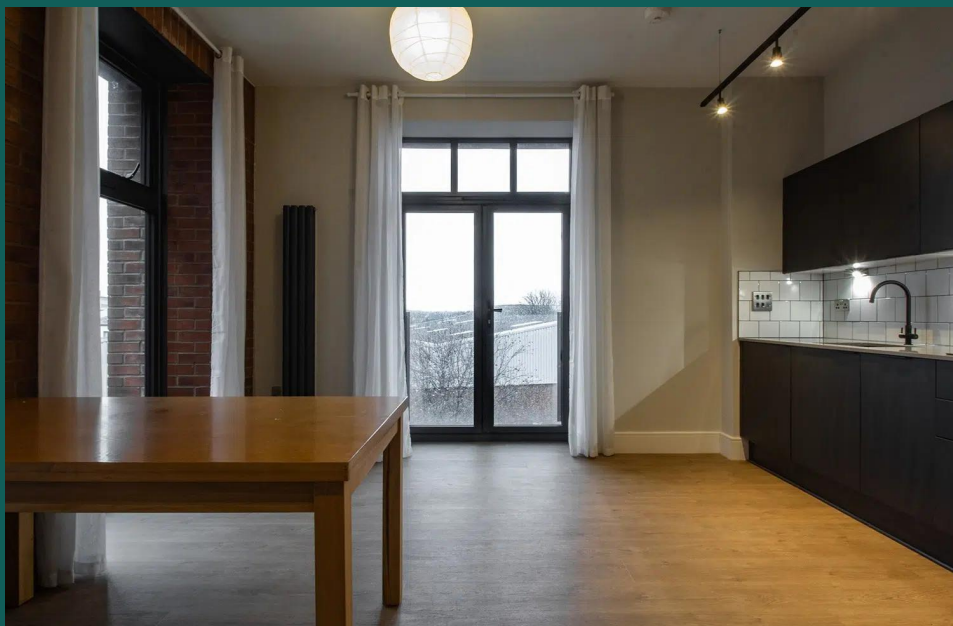




The Wharf
Loughborough

2 Bed 2nd Floor Apartment • LE11 1GN • £1,265 pcm • £1,450 Deposit



The Wharf, Loughborough

Set in the highest specification development that Loughborough has to offer. This premium, two double-bedroom second-floor apartment is soon ready for occupation. In the developer's own words, "Residents can enjoy waterside living at its best, with free access to The Wharf's gymnasium, fitness studio, communal office space, rooftop terrace and concierge service. Each apartment comes with allocated parking space(s) and The Wharf offers easy access to Loughborough's town centre and train station. The Waterside Village offers the perfect live, work and play living experience". Video tour available.

Lounge / Diner

Contemporary living area that is open plan to the kitchen. Featured Juliet Balcony, exposed brickwork, and wood effect flooring.

Kitchen

A Pullman kitchen in charcoal with matching worktop and brick-bond tiling. Hidden away behind the smart cabinets, there are all the integrated appliances, including a fridge-freezer, dual ovens, washer-dryer, easy-clean hob and a dishwasher. Open plan to the living area.

Master Bedroom

Elegant double bedroom with benefits of an ensuite shower room featuring floor-to-ceiling window. Wood effect flooring and exposed brick completes the look.

Bedroom Two

Generously proportioned second double bedroom, with dimensions almost identical to the Master bedroom.

Bathroom

This beautiful three-piece bathroom comes complete with a "rain shower" head over the bath, heated towel rail and shaving point. Classic, brick-bond tiling completes the look.

Ensuite

A three-piece en-suite shower room with a matching finish to the bathroom, heated towel rail and shaving point. Classic, brick-bond tiling completes the look.

Rooftop Terrace

For The Wharf residents to enjoy a stunning rooftop terrace overlooking Loughborough and the countryside.

Gym and Studio

Residents at The Wharf have use of a communal gymnasium, and fitness studio. Including high-spec equipment.

Parking

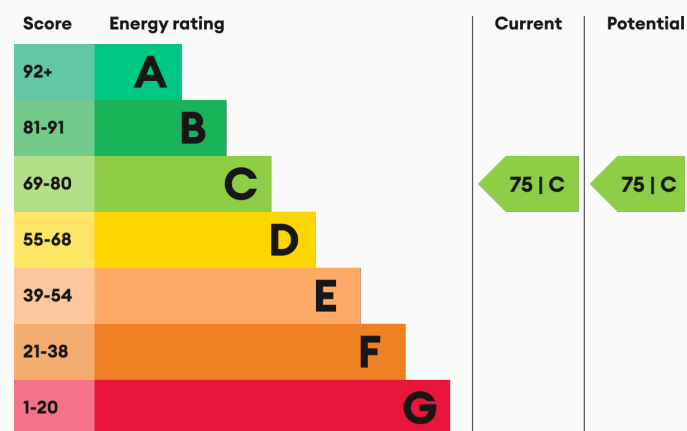
Allocated parking within The Waterside Village gated car park.

Heating

Central heating throughout.

For more information about this property, visit our website huntleys.net.

Energy Performance



We aim to make our particulars both accurate and reliable. However they are not guaranteed; nor do they form part of an offer or contract. If you require clarification on any points then please contact us, especially if you are traveling some distance to view. All measurements are to widest point.



Lounge / Kitchen



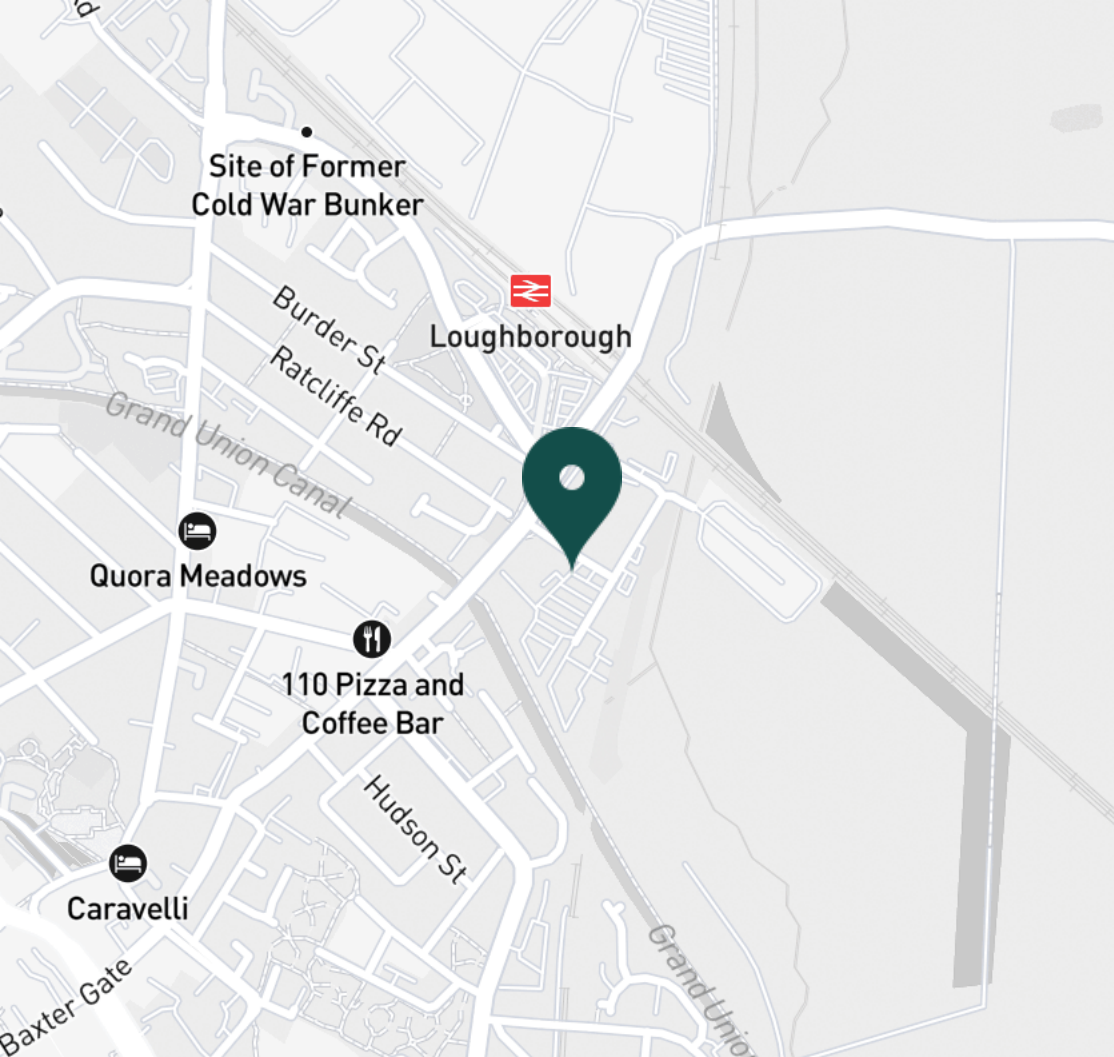
Lounge / Kitchen



Lounge / Kitchen



Lounge / Kitchen



SUPERMARKETS

| | |
|-------------------------------|--------|
| Tesco Superstore Loughborough | 0.8 mi |
| Marks & Spencer | 0.9 mi |
| Aldi Loughborough | 1.0 mi |
| Lidl Loughborough | 1.1 mi |
| Sainsburys Loughborough | 1.1 mi |

GYMS

| | |
|------------------------------|--------|
| CrossFit Loughborough | 0.4 mi |
| PureGym Loughborough | 0.6 mi |
| Anytime Fitness Loughborough | 0.7 mi |
| Dynamite Gym Ltd | 0.8 mi |
| NPC Performance Centre | 0.9 mi |

TRAIN STATIONS

| | |
|-----------------------|---------|
| Loughborough | 0.3 mi |
| Barrow upon Soar | 3.8 mi |
| Sileby | 5.9 mi |
| Syston | 10.2 mi |
| East Midlands Parkway | 10.5 mi |

NURSERY SCHOOLS

| | |
|--------------------------|--------|
| Cobden Childrens Centre | 0.6 mi |
| Babblebrooke Day Nursery | 0.6 mi |
| Lime Tree Nursery | 0.8 mi |
| Small World Nursery | 1.0 mi |
| Westwards Nursery | 1.1 mi |

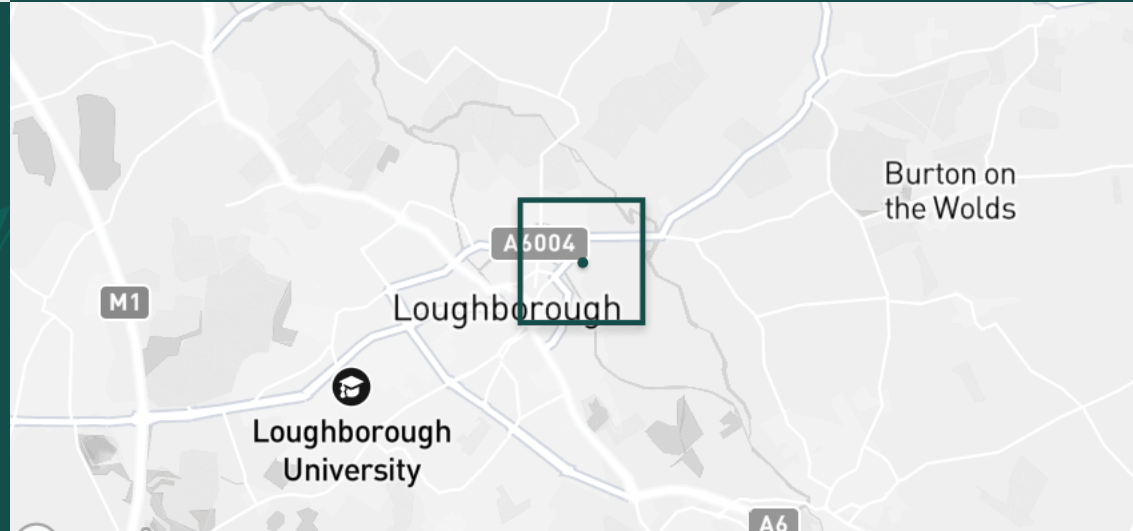
PRIMARY SCHOOLS

| | |
|---------------------------|--------|
| Rendell Primary School | 0.4 mi |
| Cobden PS | 0.8 mi |
| Fairfield Preparatory Sch | 0.9 mi |
| St Marys Catholic PS | 1.2 mi |
| Our Lady's Convent Sch | 1.3 mi |

HIGH SCHOOLS

| | |
|---------------------------|--------|
| Limehurst Academy | 0.5 mi |
| Our Lady's Convent Sch | 1.3 mi |
| Loughborough High Sch | 1.3 mi |
| RNIB College Loughborough | 1.5 mi |
| Loughborough Grammar Sch | 1.6 mi |

Discover
Loughborough



- ✓ High-spec Apartment
- ✓ Second Floor
- ✓ Ensuite
- ✓ Available Now
- ✓ Rooftop Terrace
- ✓ Gymnasium
- ✓ Concierge Service
- ✓ Allocated Parking





Sink



Juliet Balcony



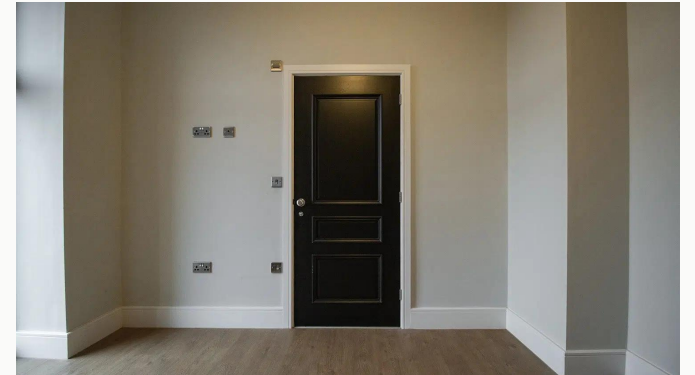
Kitchen Lights



Master Bedroom



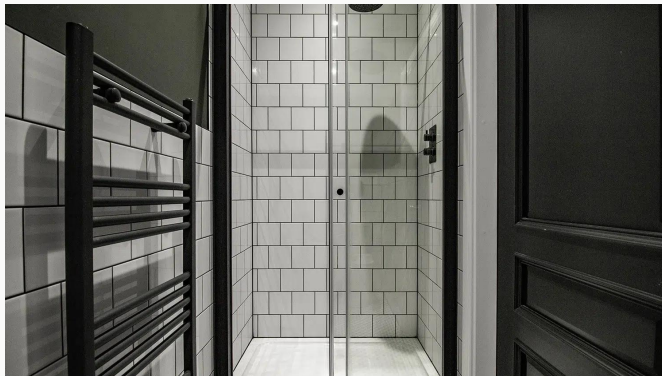
Master Bedroom



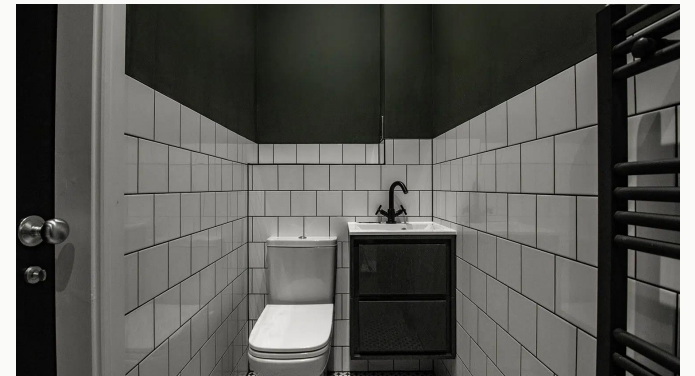
Master Bedroom



Door Fixture



Ensuite



Ensuite



Bedroom Two



Bedroom Two



Bedroom Two



Bathroom



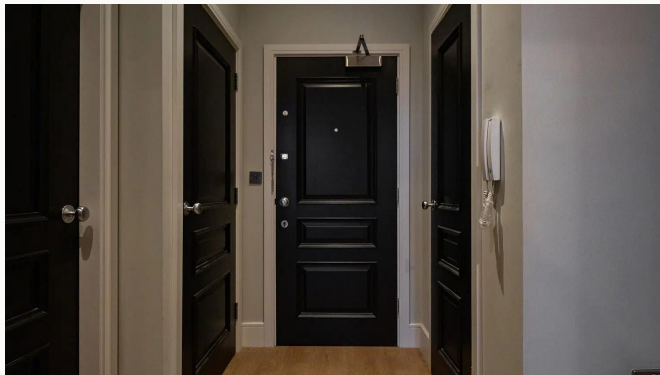
Bathroom



Shower Fixture



Hallway



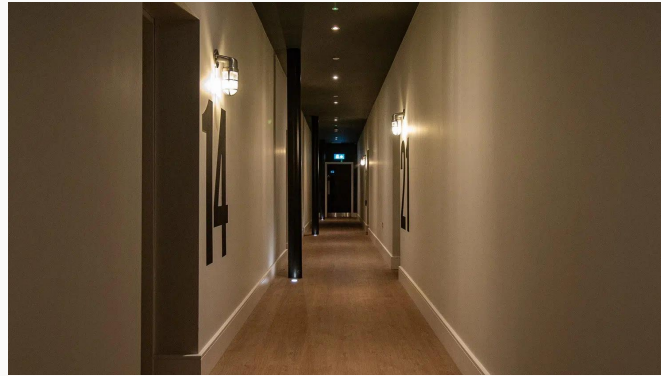
Hallway



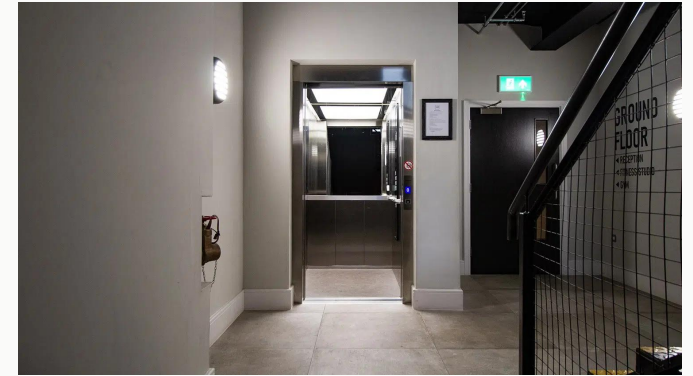
Entrance



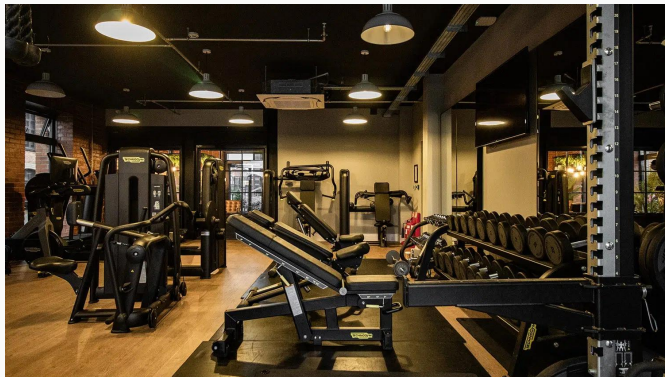
Entrance



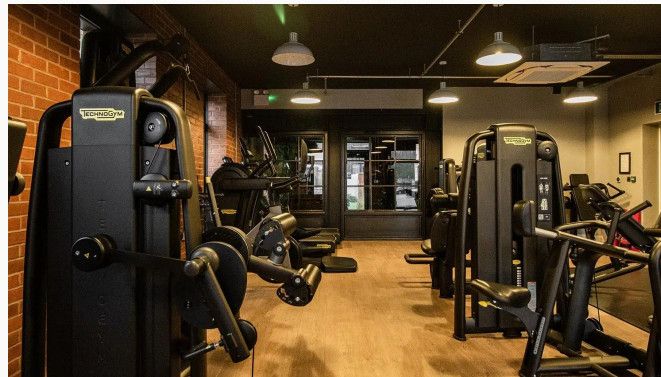
Corridor



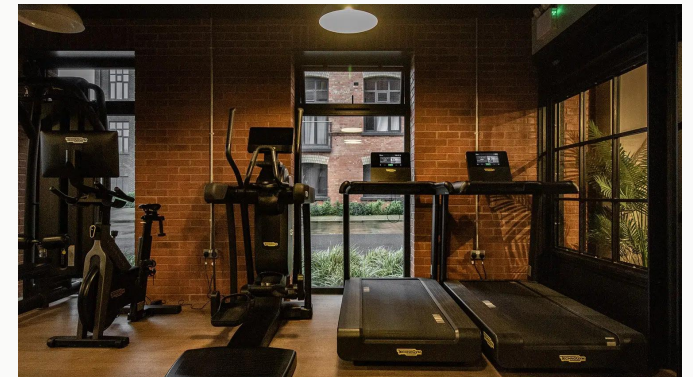
Lift



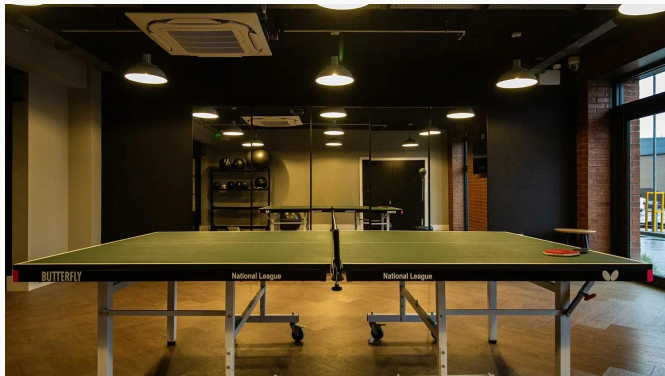
Gymnasium



Gymnasium



Gymnasium



Fitness Studio



Fitness Studio



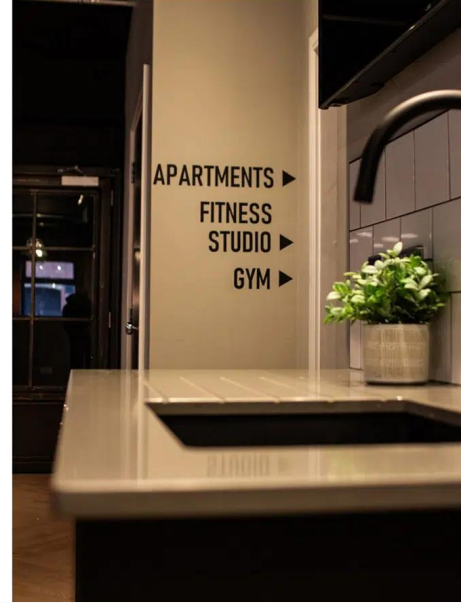
Reception



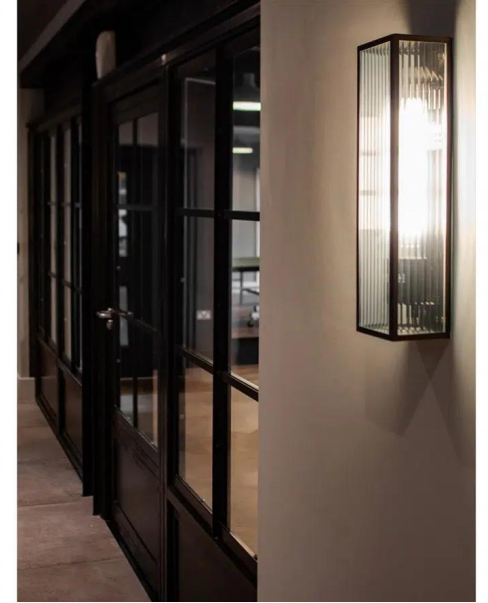
Communal Spaces



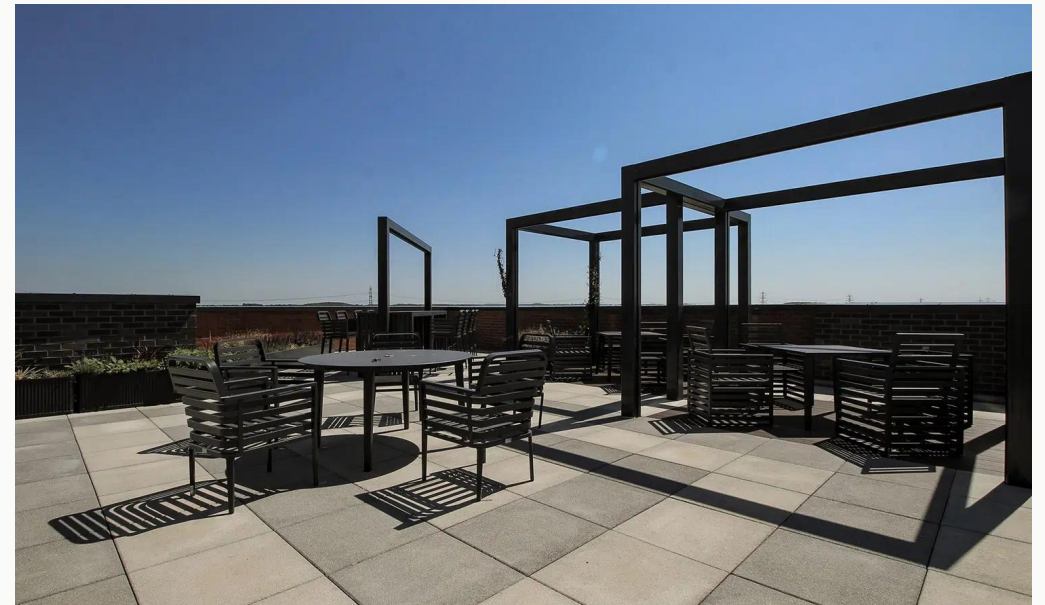
Communal Spaces



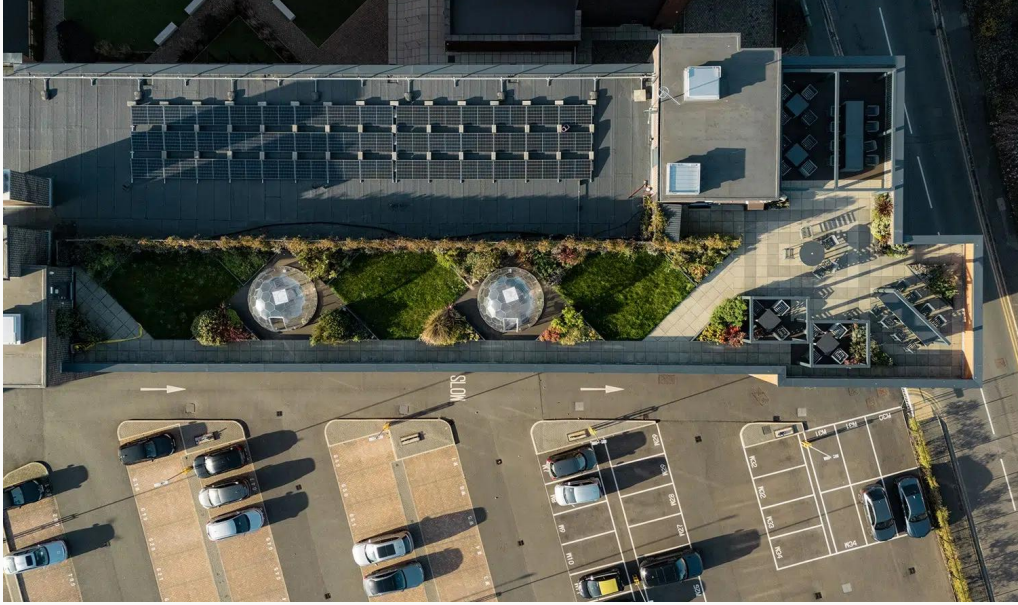
Communal Spaces



Rooftop Terrace



Rooftop Terrace



Rooftop Terrace

Available
From 28/01/2026

Comes
Unfurnished

Bedrooms
2

Receptions
1

Bathrooms
2

Parking
Allocated

Postcode
LE11 1GN

Rent
£1,265 pcm

Deposit
£1,450

EPC
75 | C

Council Tax Band
B

ID
#18703

Updated
06/03/2026



Huntleys

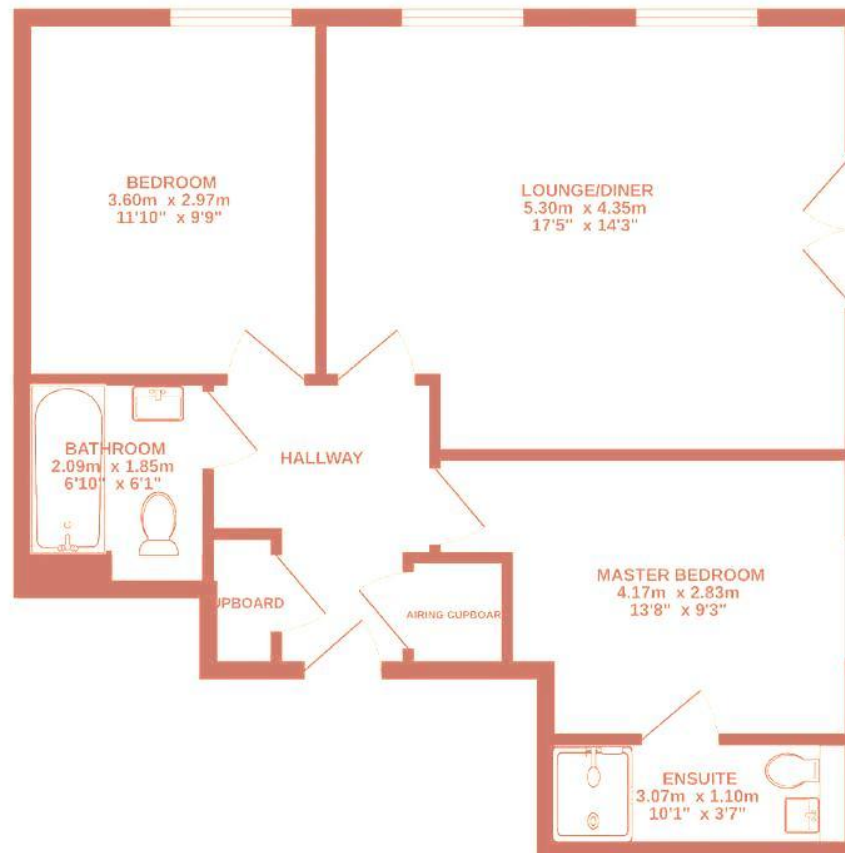
LOCATION

Loughborough, LE11

APPROX. FLOOR AREA

57.50 sq m / 619 sq ft

Illustration for identification purposes only,
measurements are approximate, not to scale



Have a property like this? Let's work together.

Design and marketing are at the heart of our approach. With most people now looking for property online, we can get our clients' properties in front of as many people as the most prominent national agents. Where we differ is in the quality of our work. We create stunning digital particulars that highlight the individual attributes of every property we market, with videos and floor plans as standard.



OUR OFFICE
7 Biggin Street
Loughborough, LE11 1UA

CONTACT US
01509 320 320
let@huntleys.net



Huntleys

