

Student

Regent Street Loughborough

2 Bed 1st Floor Apartment • LE11 5BA • £115 pppw • £500 Deposit Per Person



Regent Street, Loughborough

SIZEABLE two DOUBLE bedroom FIRST-floor maisonette. Located in the GOLDEN TRIANGLE, Fully FURNISHED. Clean and Smart. Double glazed and centrally heated. Off-road PARKING and CYCLE STORAGE. Just along from ASHBY ROAD. Available for 2025 - 2026 academic year. Sorry, bills not included.

Entrance hall

Private Ground Floor Entrance Hall can also provide secure dry storage for cycles.

Living Room 4.9m (16'1) x 3.4m (11'2)

A dual aspect living room that's easily large enough to be used as both lounge and diner.

Kitchen 3.6m (11'10) x 2.8m (9'2)

Newly fitted kitchen in 2021. Good quality kitchen with butchers-block style worktop. Includes, washer-dryer, fridge, freezer, oven and a gas hob. Large enough to include a dining area, with table and chairs.

Bedroom One 3.4m (11'2) x 3.3m (10'10)

A substantial double room with its own storage cupboard. Its ample size allows the room to be arranged to suit the occupant.

Bedroom Two 3.2m (10'6) x 2.3m (7'7)

A good size double room which can easily be arranged into two halves allowing for both sleeping and study areas.

Bathroom 2.1m (6'11) x 2.1m (6'11)

Modern three piece bathroom suite complete with shower over the bath. Clean and smart.

Parking

Off-road parking for one car.

Heating

Gas-fired central heating.

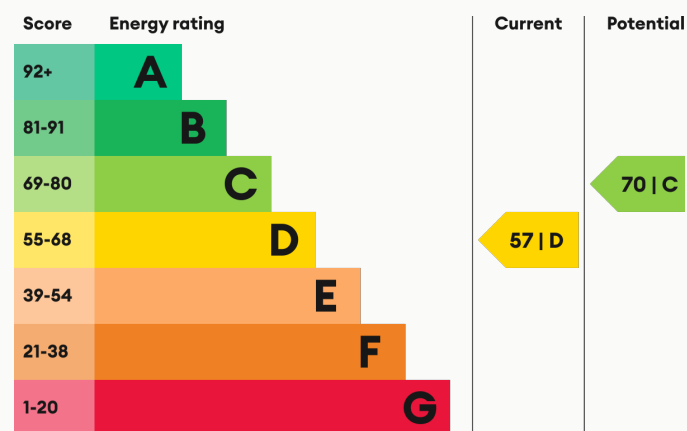
Utilities

Sorry, bills not included.

Glazing

Modern, good quality, uPVC double glazing.

Energy Performance



We aim to make our particulars both accurate and reliable. However they are not guaranteed; nor do they form part of an offer or contract. If you require clarification on any points then please contact us, especially if you are traveling some distance to view. All measurements are to widest point.



Living Area



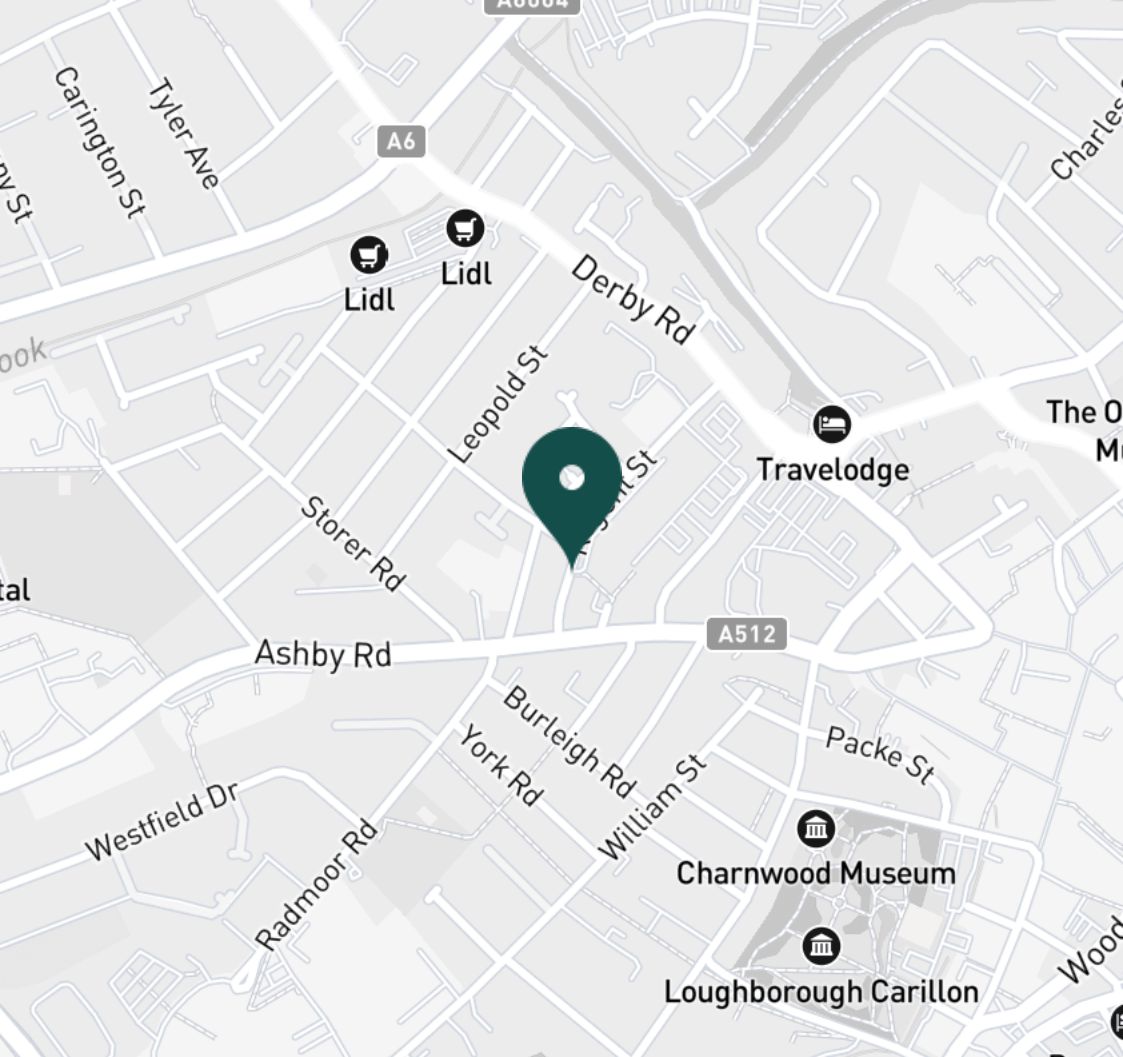
Living Area



Living Area



Master Bedroom



SUPERMARKETS

Sainsburys Loughborough	0.3 mi
Tesco Superstore Loughborough	0.3 mi
Lidl Loughborough	0.4 mi
Marks & Spencer	0.7 mi
Aldi Loughborough	0.8 mi

GYMS

Anytime Fitness Loughborough	0.3 mi
PureGym Loughborough	0.4 mi
Dynamite Gym Ltd	0.6 mi
CrossFit Loughborough	0.7 mi
Loughborough University Pool	0.7 mi

TRAIN STATIONS

Loughborough	1.2 mi
Barrow upon Soar	4.2 mi
Sileby	6.1 mi
East Midlands Parkway	9.8 mi
Syston	11.1 mi

NURSERY SCHOOLS

Busy Bees in Loughborough	0.2 mi
Kingscliffe Day Nursery	0.2 mi
Small World Nursery	0.3 mi
Babblebrooke Day Nursery	0.4 mi
Little House Day Nursery	0.8 mi

PRIMARY SCHOOLS

St Marys Catholic PS	0.1 mi
Loughborough CE PS	0.5 mi
Rendell Primary School	0.7 mi
Cobden PS	0.9 mi
Our Lady's Convent Sch	1.0 mi

HIGH SCHOOLS

RNIB College Loughborough	0.4 mi
Limehurst Academy	0.5 mi
Loughborough College	0.8 mi
Lboro Uni School Of The Arts	0.9 mi
Our Lady's Convent Sch	1.0 mi

Discover
Loughborough



✓ Fully furnished

✓ First floor

✓ Great size

✓ Just off Ashby Road

✓ Golden Triangle Location

✓ Off-Road Parking





Master Bedroom



Master Bedroom



Master Bedroom



Landing



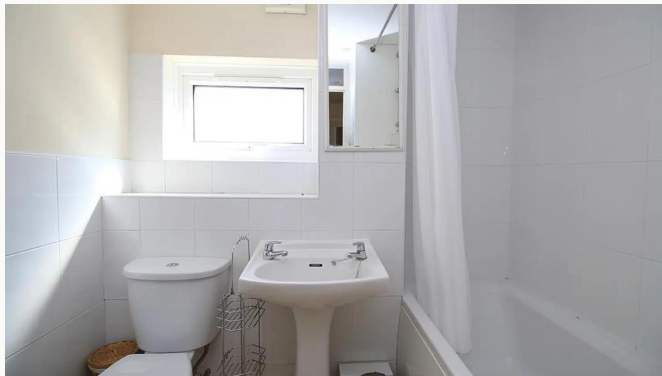
Bedroom Two



Bedroom Two



Bedroom Two



Bathroom



Bathroom



Kitchen



Kitchen



Kitchen



Entrance Hallway



Entrance Hallway



Front of Building



Feature wallpaper

Available
From 30/06/2025

Comes
Furnished

Bedrooms
2

Receptions
1

Bathrooms
1

Parking
Off road

Postcode
LE11 5BA

Rent
£115 pppw

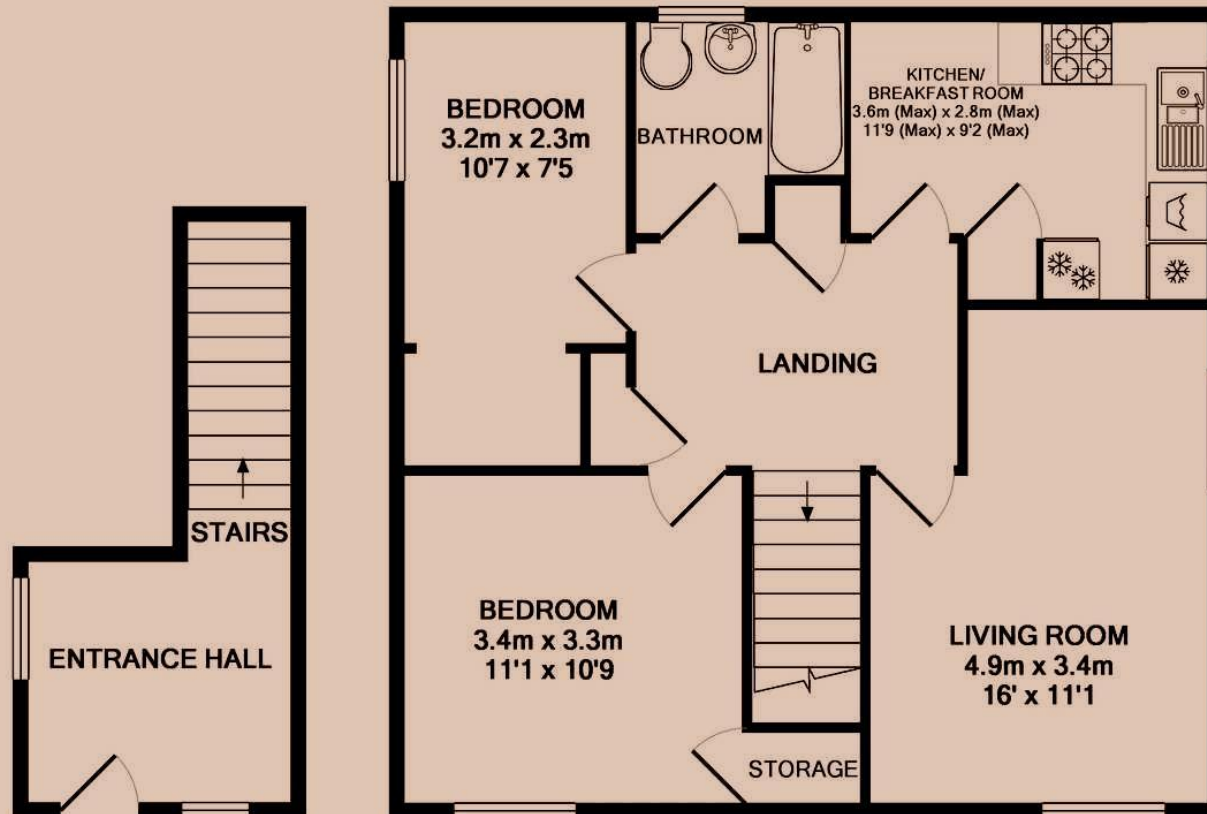
Deposit
£1,000

EPC
57 | D

Council Tax Band
A

ID
#789

Updated
01/11/2024



GROUND FLOOR

1ST FLOOR

Have a property like this? Let's work together.

Design and marketing are at the heart of our approach. With most people now looking for property online, we can get our clients' properties in front of as many people as the most prominent national agents. Where we differ is in the quality of our work. We create stunning digital particulars that highlight the individual attributes of every property we market, with videos and floor plans as standard.



OUR OFFICE
7 Biggin Street
Loughborough, LE11 1UA

CONTACT US
01509 320 320
let@huntleys.net

