



Holywell Drive
Loughborough

3 Bed Semi-Detached House • LE11 3JX • £1,250 pcm • £1,440 Deposit



Holywell Drive, Loughborough

Presented in great condition and soon available to let. A detached, three-bedroom house situated on a sought-after estate. This property comes with a sizeable lounge, kitchen, three bedrooms, and bathroom. Externally there is a good sized front and rear garden, along with a driveway leading towards the garage.

Lounge / Diner

A sizeable reception room, running the full depth of the property and open to the kitchen. This room is large enough to be used as both lounge and diner.

Kitchen

A large galley style kitchen including a breakfast bar, integrated dishwasher, oven, and hob, with space for other appliances.

Master Bedroom

The largest of the three bedrooms and overlooking the rear garden. This double bedroom comes with the wardrobe pictured.

Bedroom Two

A second double bedroom on the first floor, including the wardrobe pictured.

Bedroom Three

A third double bedroom on the first floor, overlooking Holywell Drive.

Bathroom

A modern, three piece bathroom set on the first floor. Includes a bath, sink, toilet, and shower above the bath.

Garden

A good sized natural garden to the rear of the property including a shed for storage.

Parking

Driveway parking included as well as a single garage.

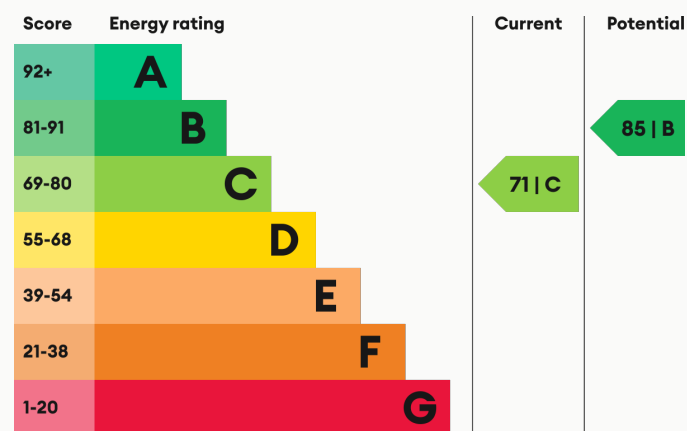
Heating

Gas-fired central heating.

Glazing

Modern, good quality, uPVC double glazing.

Energy Performance



We aim to make our particulars both accurate and reliable. However they are not guaranteed; nor do they form part of an offer or contract. If you require clarification on any points then please contact us, especially if you are traveling some distance to view. All measurements are to widest point.



Lounge



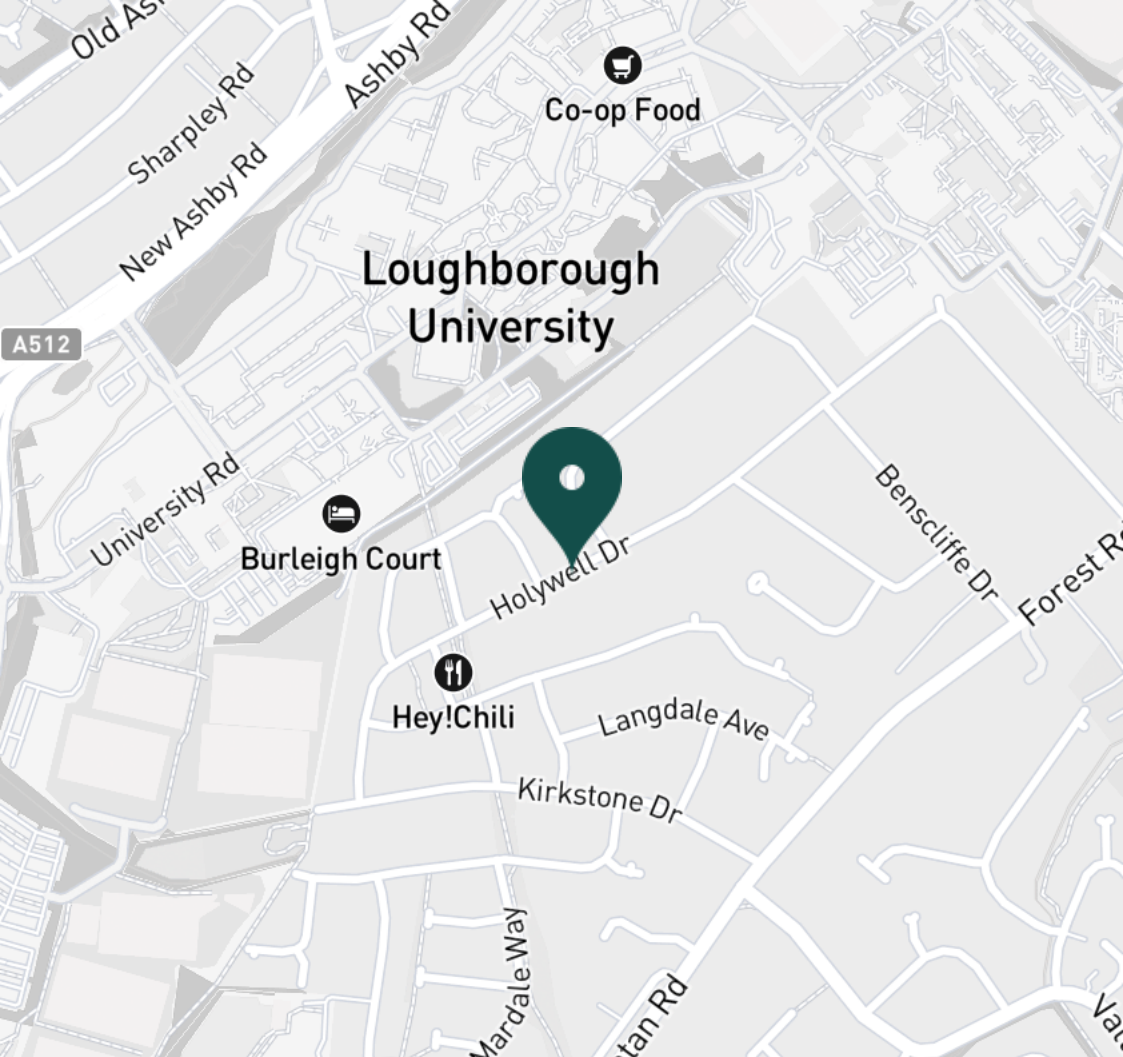
Lounge



Lounge



Kitchen



SUPERMARKETS

Tesco Extra Loughborough	1.8 mi
Co-op Food Knightthorpe Rd	1.9 mi
Sainsburys Loughborough	1.9 mi
Tesco Superstore Loughborough	2.0 mi
Marks & Spencer	2.0 mi

GYMS

Burleigh Springs Leisure Club	1.1 mi
Holywell Fitness Centre	1.2 mi
Radmoor Centre	1.3 mi
Loughborough University Pool	1.4 mi
Loughborough Sport	1.5 mi

TRAIN STATIONS

Loughborough	2.6 mi
Barrow upon Soar	4.6 mi
Sileby	6.4 mi
Syston	10.7 mi
South Wigston	11.6 mi

NURSERY SCHOOLS

Emmanuel PS	1.2 mi
Nanpantan Nursery School	1.3 mi
Parkside PS	1.4 mi
Loughborough Campus Nursery	1.5 mi
Little House Day Nursery	1.6 mi

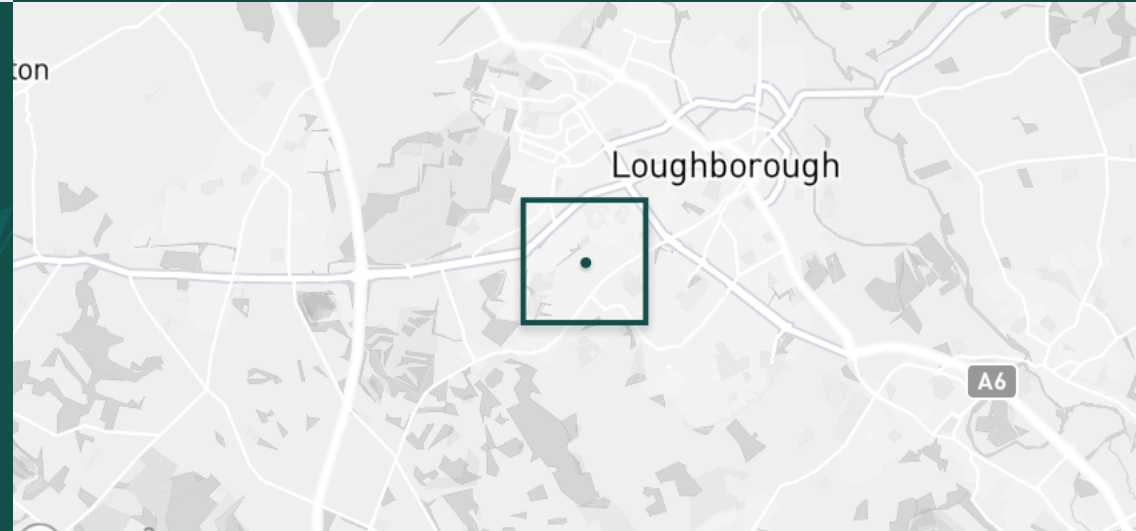
PRIMARY SCHOOLS

Holywell PS	0.7 mi
Mountfields Lodge Sch	0.9 mi
Sacred Heart Catholic PS	1.4 mi
Our Lady's Convent Sch	1.8 mi
Beacon Primary Academy	1.8 mi

HIGH SCHOOLS

Loughborough College	1.3 mi
Lboro Uni School Of The Arts	1.3 mi
Woodbrook Vale	1.4 mi
Our Lady's Convent Sch	1.8 mi
RNIB College Loughborough	2.2 mi

Discover
Loughborough



- ✓ Garage
- ✓ Garden
- ✓ Detached
- ✓ Three Bedrooms
- ✓ Modern Home
- ✓ Driveway





Kitchen



Kitchen



Master Bedroom



Master Bedroom



Master Bedroom



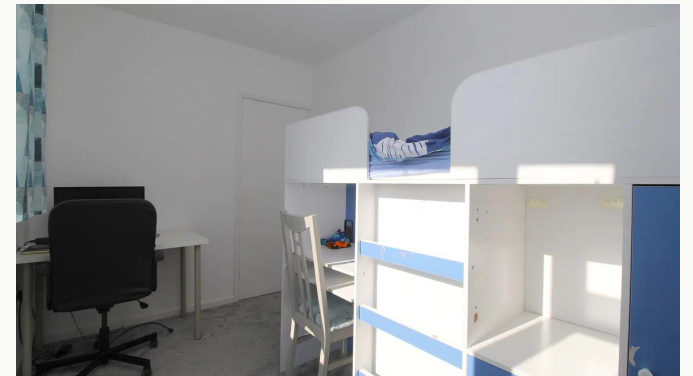
Bedroom Two



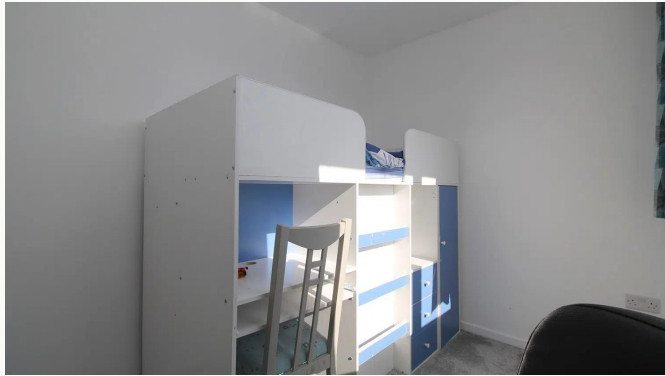
Bedroom Two



Bedroom Two



Bedroom Three



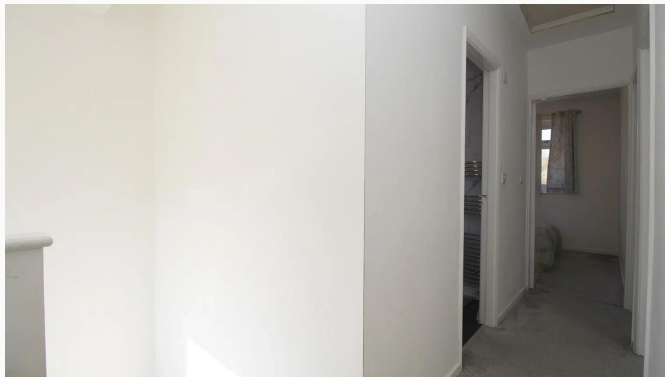
Bedroom Three



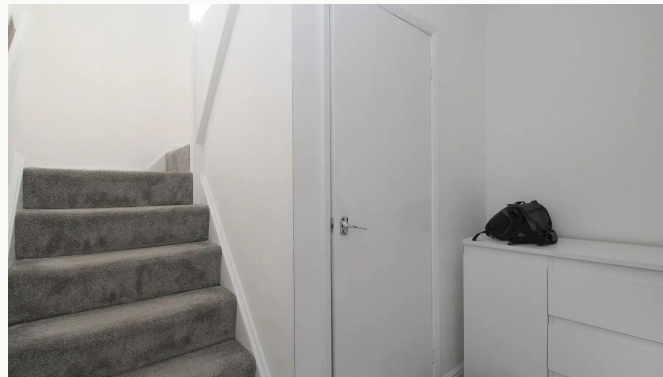
Bedroom Three



Bathroom



Landing



Hallway



Garden



Garden



Garden



Driveway

Available
From 01/04/2025

Comes
Unfurnished

Bedrooms
3

Receptions
1

Bathrooms
1

Parking
Ask Agent

Postcode
LE11 3JX

Rent
£1,250 pcm

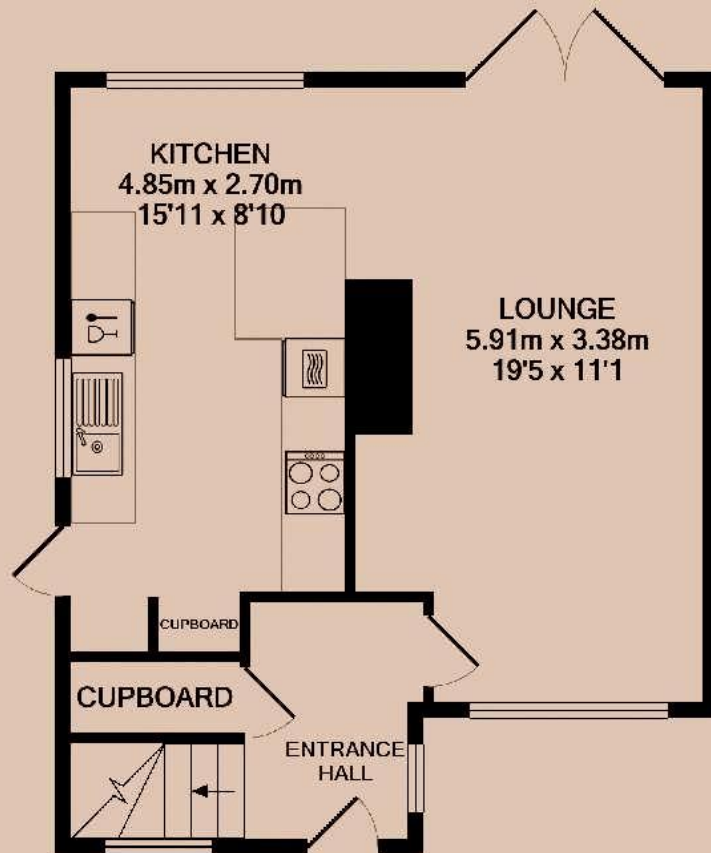
Deposit
£1,440

EPC
71 | C

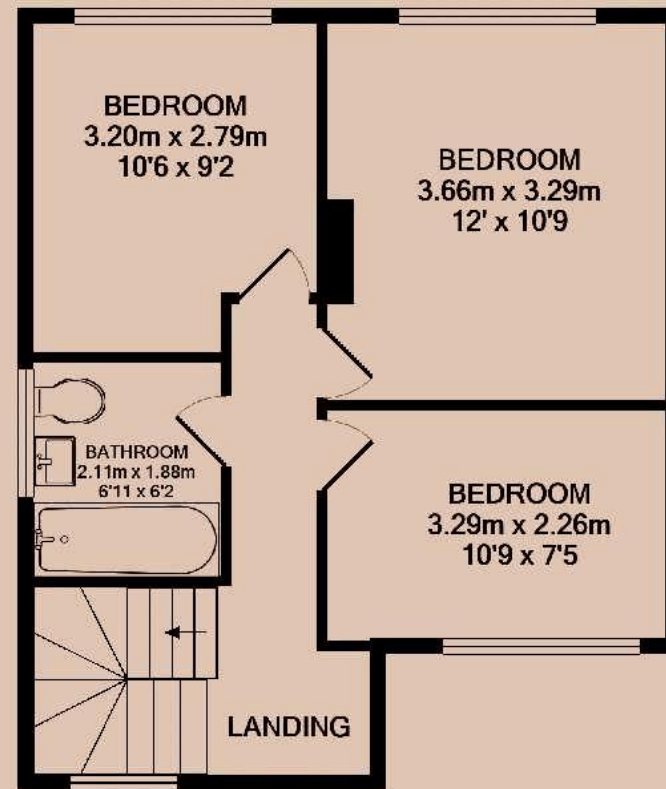
Council Tax Band
D

ID
#15815

Updated
07/03/2025



GROUND FLOOR



1ST FLOOR

Have a property like this? Let's work together.

Design and marketing are at the heart of our approach. With most people now looking for property online, we can get our clients' properties in front of as many people as the most prominent national agents. Where we differ is in the quality of our work. We create stunning digital particulars that highlight the individual attributes of every property we market, with videos and floor plans as standard.



OUR OFFICE
7 Biggin Street
Loughborough, LE11 1UA

CONTACT US
01509 320 320
let@huntleys.net



Huntleys

