

An aerial photograph of a modern brick building complex in Loughborough. The building features a prominent rooftop terrace with outdoor seating, including tables and chairs. Two large, clear glass domes are visible on the roof. The surrounding area includes other buildings, a street with a car, and a distant view of the town and hills under a clear blue sky. The text 'The Wharf Loughborough' is overlaid in a white, elegant serif font.

The Wharf Loughborough

1 Bed 4th Floor Apartment • LE11 1GN • £1,150 pcm • £1,320 Deposit



The Wharf, Loughborough

A contemporary apartment at THE WHARF, soon available to let. Set in the highest specification development that Loughborough has to offer. This premium, one bedroom fourth-floor apartment is soon ready for occupation. In the developer's own words, "Residents can enjoy waterside living at its best, with free access to The Wharf's gymnasium, fitness studio, communal office space, rooftop terrace and concierge service. Each apartment comes with allocated parking space(s) and The Wharf offers easy access to Loughborough's town centre and train station. The Waterside Village offers the perfect live, work and play living experience". PLEASE NOTE: All photos and video tour are of a show home within the same block.

Lounge / Diner

Contemporary living area that is open plan to the kitchen and runs the full depth of the apartment.

Kitchen

A Pullman kitchen in charcoal with matching worktop and brick-bond tiling. Hidden away behind the smart cabinets, there are all the integrated appliances, including a fridge-freezer, dual ovens, washer-dryer, easy-clean hob and a dishwasher - open plan to the living area.

Bedroom

Elegant and spacious double bedroom featuring floor-to-ceiling window. Wood effect flooring and exposed brick completes the look.

Bathroom

This beautiful four-piece bathroom comes complete with a separate shower, heated towel rail and shaving point. Classic, brick-bond tiling completes the look.

Rooftop Terrace

For The Wharf residents to enjoy a stunning rooftop terrace overlooking Loughborough and the countryside.

Parking

Allocated parking within The Waterside Village gated car park.

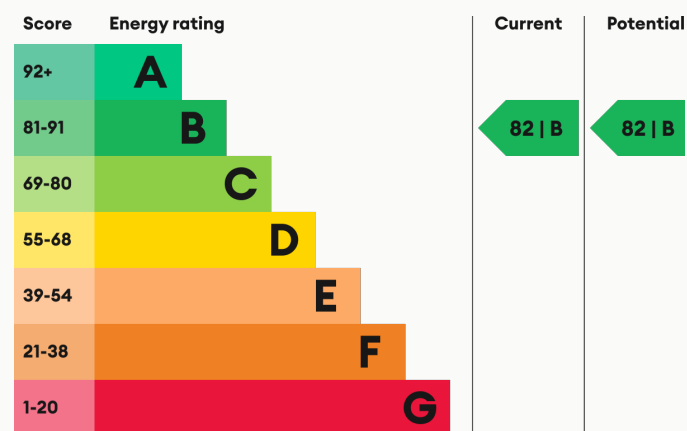
Heating

Central heating throughout.

Glazing

Modern, good quality, uPVC double glazing.

Energy Performance



We aim to make our particulars both accurate and reliable. However they are not guaranteed; nor do they form part of an offer or contract. If you require clarification on any points then please contact us, especially if you are traveling some distance to view. All measurements are to widest point.



Lounge / Diner



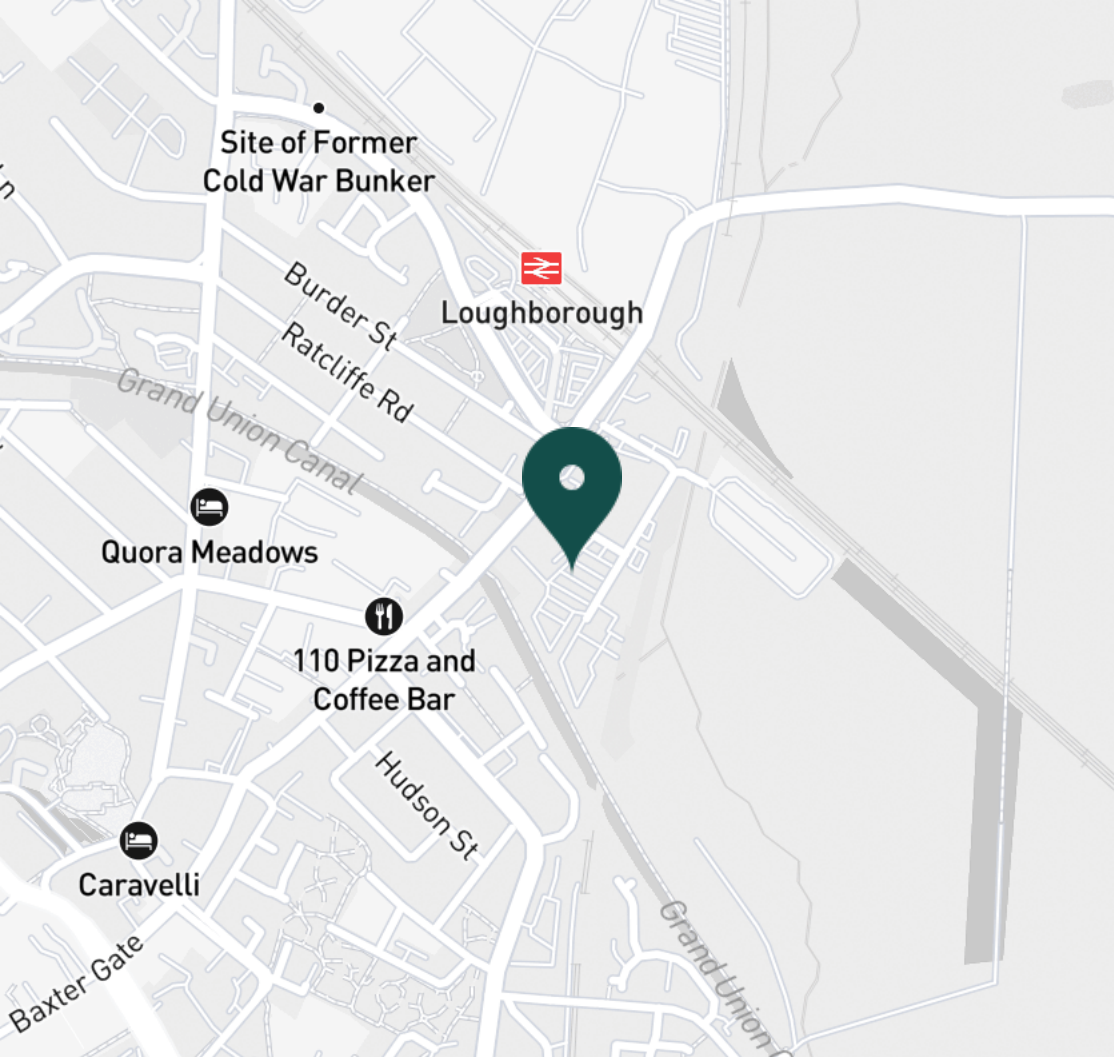
Kitchen



Kitchen



Kitchen



SUPERMARKETS

Tesco Superstore Loughborough	0.8 mi
Marks & Spencer	0.9 mi
Aldi Loughborough	1.0 mi
Lidl Loughborough	1.1 mi
Sainsburys Loughborough	1.2 mi

GYMS

CrossFit Loughborough	0.5 mi
PureGym Loughborough	0.7 mi
Anytime Fitness Loughborough	0.8 mi
Dynamite Gym Ltd	0.8 mi
NPC Performance Centre	1.0 mi

TRAIN STATIONS

Loughborough	0.3 mi
Barrow upon Soar	5.3 mi
Sileby	6.0 mi
Syston	10.3 mi
East Midlands Parkway	10.5 mi

NURSERY SCHOOLS

Cobden Childrens Centre	0.6 mi
Babblebrooke Day Nursery	0.7 mi
Lime Tree Nursery	0.8 mi
Small World Nursery	1.1 mi
Emmanuel PS	1.2 mi

PRIMARY SCHOOLS

Rendell Primary School	0.5 mi
Cobden PS	0.8 mi
Fairfield Preparatory Sch	1.0 mi
St Marys Catholic PS	1.3 mi
Loughborough Grammar Sch	1.3 mi

HIGH SCHOOLS

Limehurst Academy	0.6 mi
Loughborough Grammar Sch	1.3 mi
Our Lady's Convent Sch	1.3 mi
Loughborough High Sch	1.4 mi
RNIB College Loughborough	1.5 mi

Discover
Loughborough



- ✓ Fitness Studio
- ✓ High-spec Gymnasium
- ✓ Rooftop Terrace
- ✓ One Bedroom Apartment
- ✓ Four-piece Bathroom
- ✓ Allocated Parking





Lounge / Diner



Lounge / Diner



Lounge / Diner



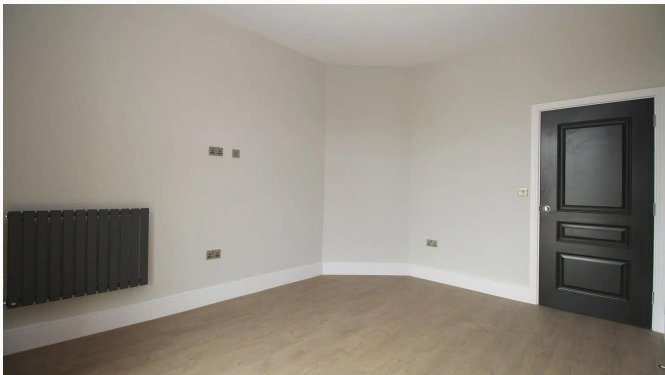
Lounge / Diner



Lounge / Diner



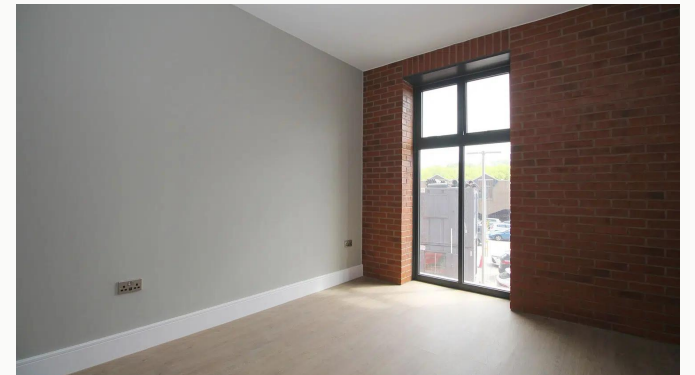
Bedroom



Bedroom



Bedroom



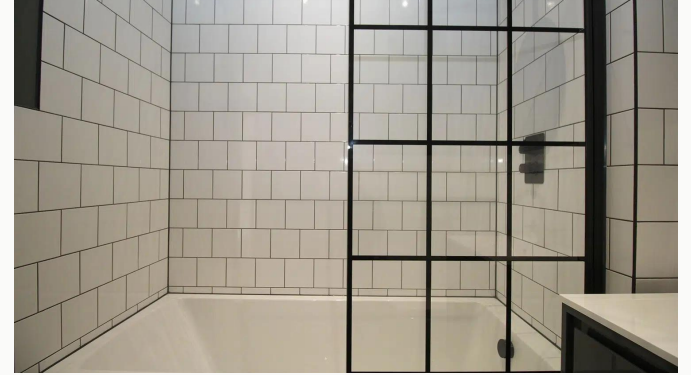
Bedroom



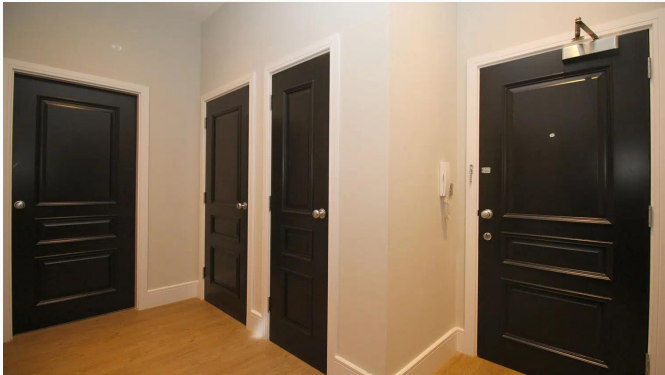
Bathroom



Bathroom



Bathroom



Hallway



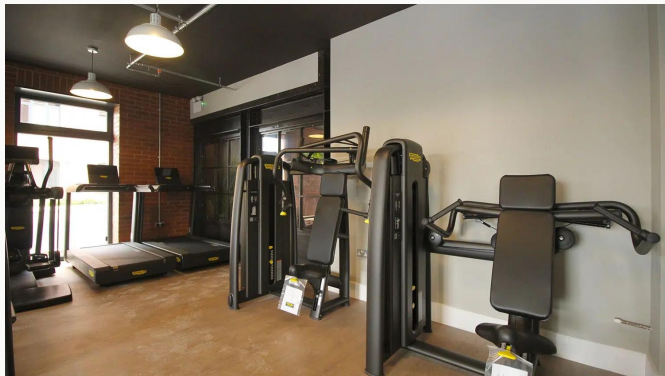
Gym



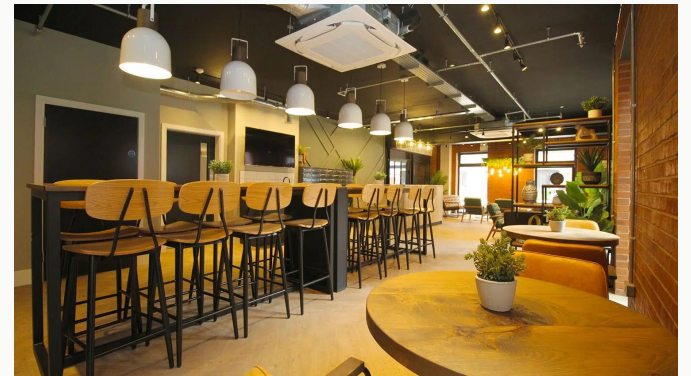
Gym



Gym



Gym



Reception



Reception



Reception



The Wharf



Rooftop Terrace



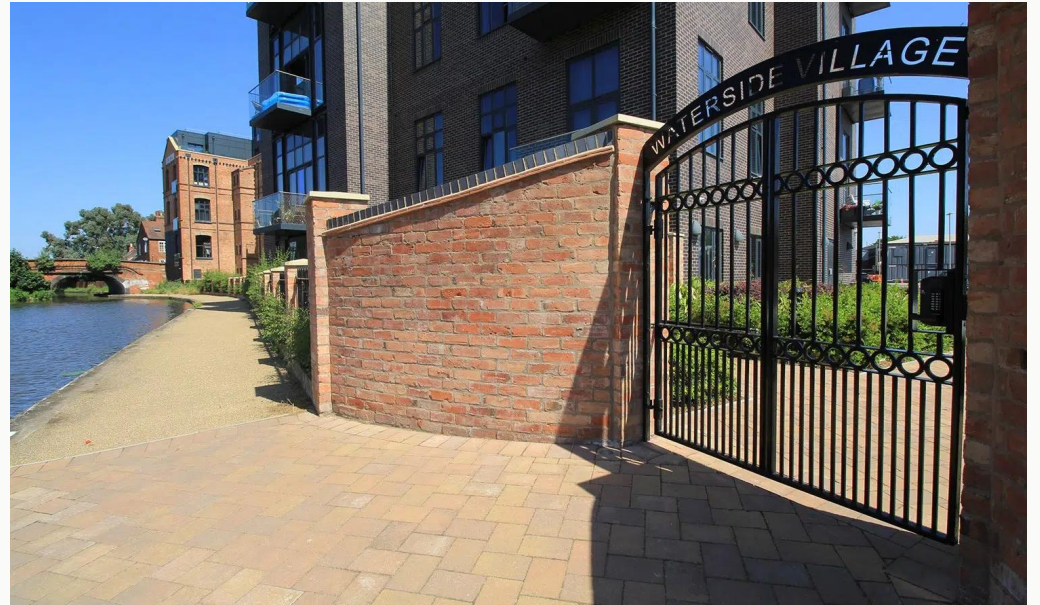
Rooftop Terrace



Rooftop Terrace



Waterside Village



Canalside

Available
From 18/07/2025

Comes
Unfurnished

Bedrooms
1

Receptions
1

Bathrooms
1

Parking
Allocated

Postcode
LE11 1GN

Rent
£1,150 pcm

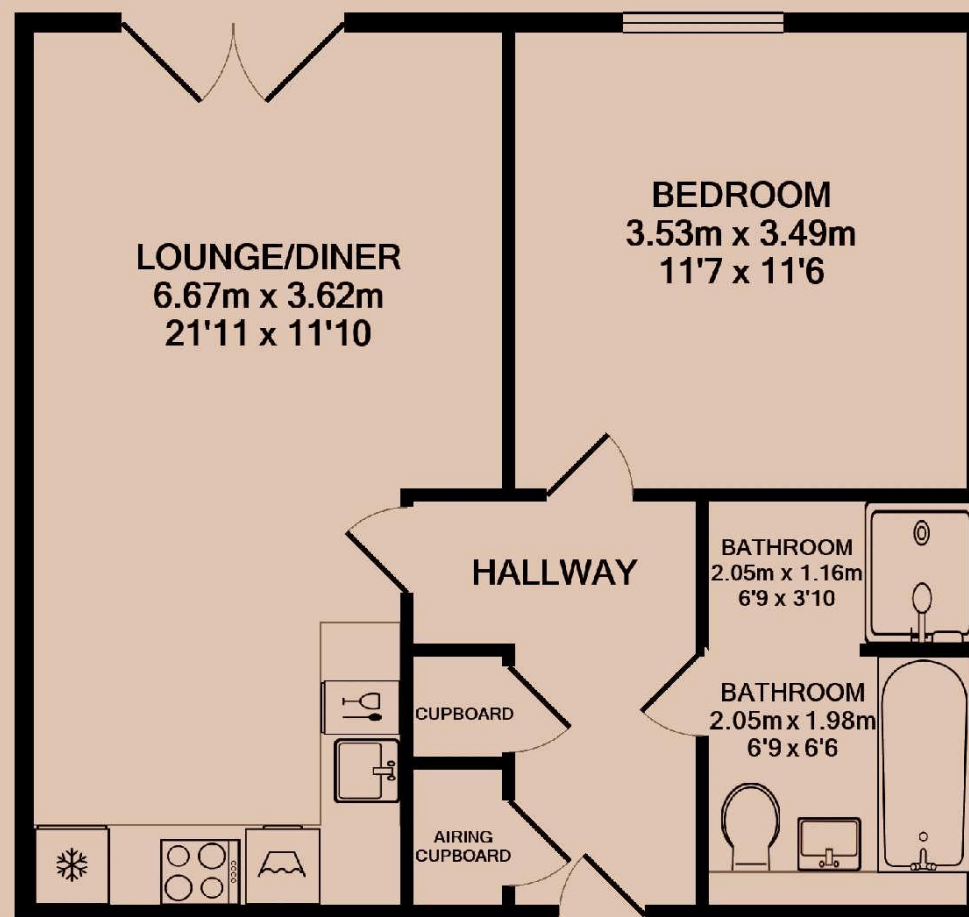
Deposit
£1,320

EPC
82 | B

Council Tax Band
B

ID
#10704

Updated
10/06/2025



Have a property like this? Let's work together.

Design and marketing are at the heart of our approach. With most people now looking for property online, we can get our clients' properties in front of as many people as the most prominent national agents. Where we differ is in the quality of our work. We create stunning digital particulars that highlight the individual attributes of every property we market, with videos and floor plans as standard.



OUR OFFICE
7 Biggin Street
Loughborough, LE11 1UA

CONTACT US
01509 320 320
let@huntleys.net



Huntleys

