



Latimer Street

Anstey

2 Bed 1st Floor Apartment • LE7 7AW • £1,125 pcm • £1,290 Deposit



Energy Performance

TBC

Latimer Street, Anstey

Developed by SOLUS Homes and situated in the heart of Anstey, Leicestershire. This brand new, first-floor, two double bedroom apartment is soon available to let. This property comprises a large living space, open to the contemporary kitchen, two double bedrooms with built-in wardrobe, and a smart three-piece bathroom. Underfloor heating throughout, with individual room control. Brand new kitchen appliances included. Allocated parking for one car. PLEASE NOTE: Photographs and video tour are of a similar apartment within the same development. Floorplan is of actual property.

Lounge / Diner

Running the full depth of the apartment, an open living space, large enough to be used as both lounge and diner. Multiple large windows allow for natural light. Open to the kitchen.

Kitchen

Set towards the end of the living area. This contemporary kitchen boasts a ceramic brick-tiled splashback and quartz worktop, this contemporary kitchen comes equipped with an integrated dishwasher, washer/dryer, fridge/freezer, oven, and induction hob.

Master Bedroom

The first of the two bedrooms, including a built-in wardrobe. This bedroom also comes with underfloor heating with individual heating control.

Bedroom Two

The second of the two bedrooms, including a built-in wardrobe. This bedroom also comes with underfloor heating with individual heating control.

Bathroom

This beautiful three piece bathroom comes complete with a "rain shower" over the bath, heated towel rail, shaving point and underfloor heating. Classic, brick-bond tiling completes the look.

Parking

Allocated parking for one car, available within the development car park.

Heating

Gas-fired central heating.

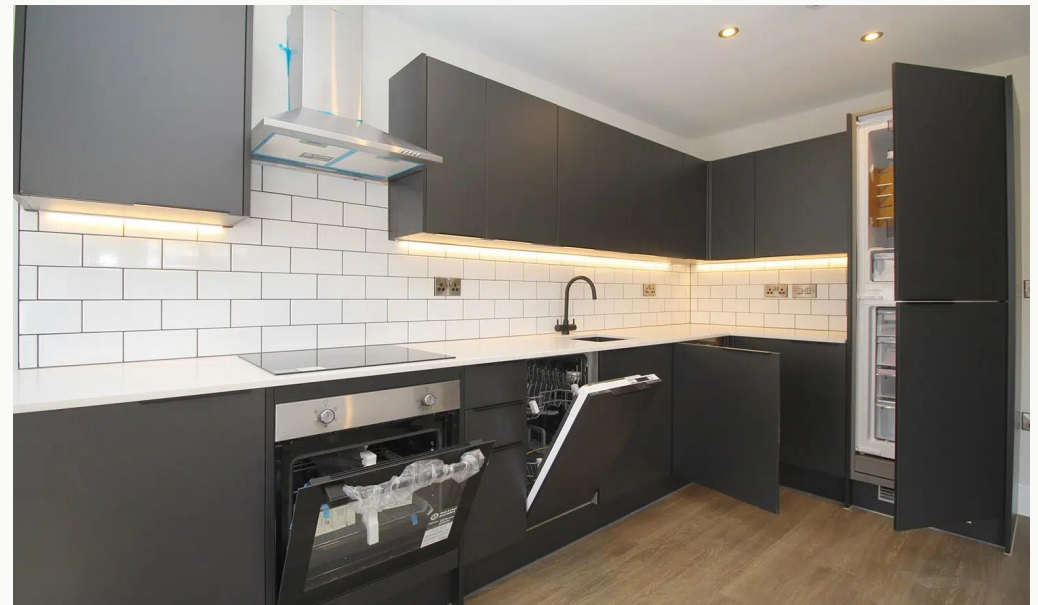
Glazing

Modern, good quality, uPVC double glazing.

We aim to make our particulars both accurate and reliable. However they are not guaranteed; nor do they form part of an offer or contract. If you require clarification on any points then please contact us, especially if you are traveling some distance to view. All measurements are to widest point.



Kitchen



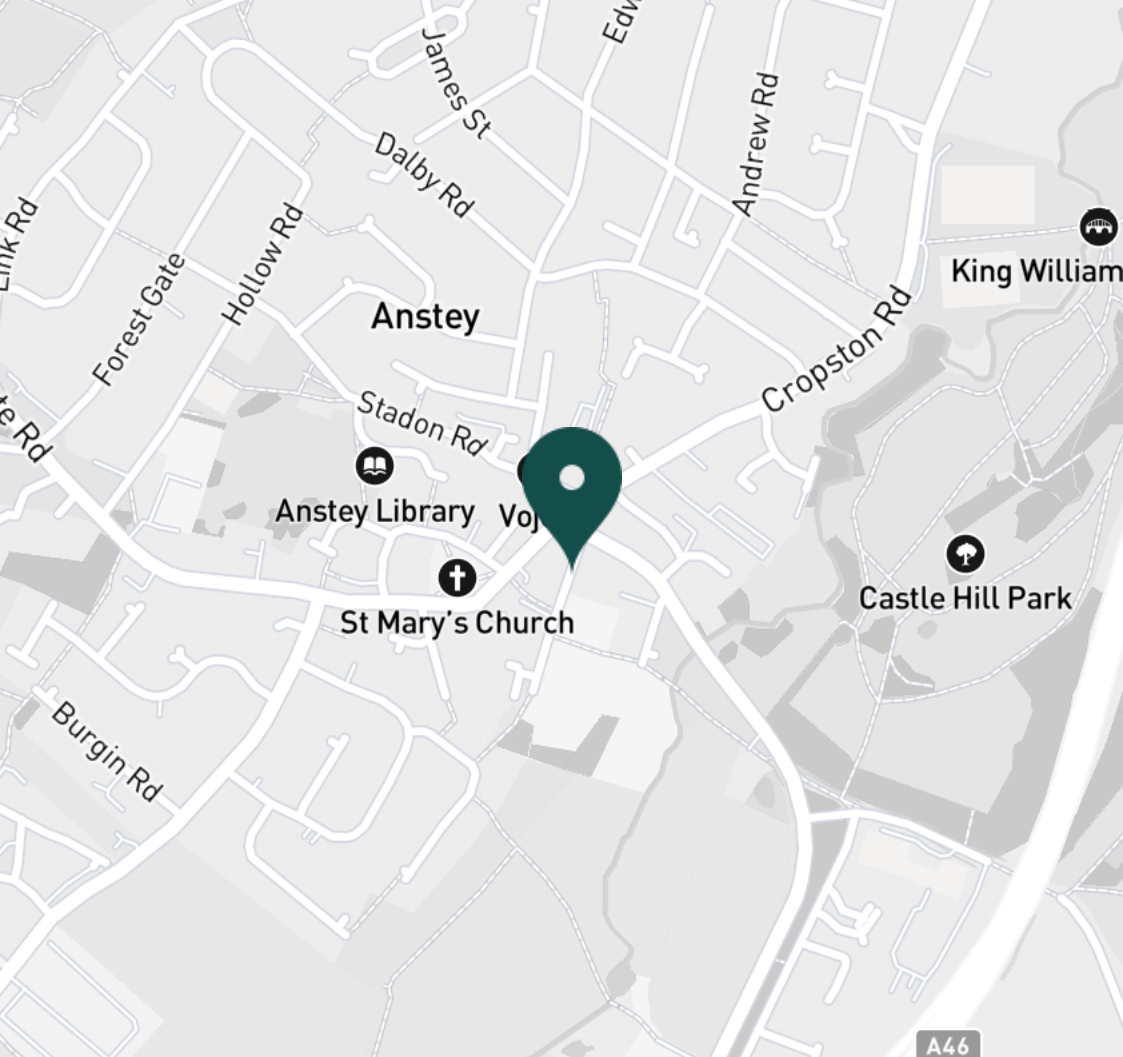
Appliances



Bedrooms



Bedrooms



SUPERMARKETS

Tesco Extra Beaumont Leys	1.6 mi
Co-op Food Groby	2.7 mi
Co-op Food Laundon Way	2.7 mi
Co-op Food Glenfield	3.2 mi
Aldi Abbey Ln	3.4 mi

GYMS

Progress Works Gym Glenfield	1.9 mi
Hot Bodys Gym Ltd	3.8 mi
DW Gym Group	4.2 mi
The Warehouse Gym	5.2 mi
Fosse Fitness 365	5.7 mi

TRAIN STATIONS

South Wigston	2.9 mi
Leicester	4.8 mi
Syston	6.4 mi
Sileby	8.8 mi
Narborough	9.2 mi

NURSERY SCHOOLS

Lilliput Montessori	0.0 mi
Cropston PreSch	1.7 mi
Thurcaston Early Learning PS	1.9 mi
Curious Kittens Childcare	2.0 mi
Mes Enfants	2.0 mi

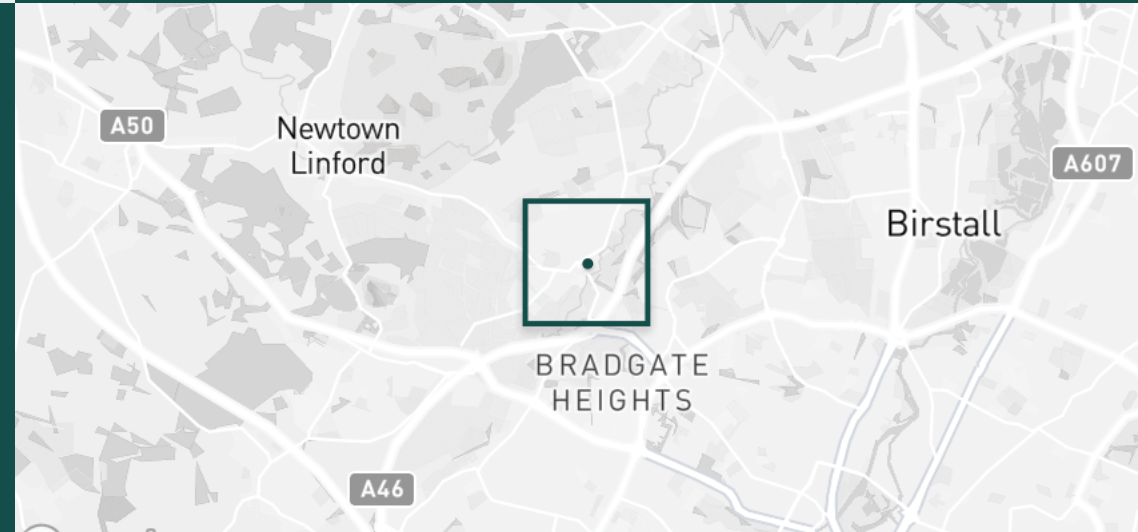
PRIMARY SCHOOLS

Richard Hill CE PS	2.1 mi
Elizabeth Woodville PS	2.7 mi
Woodstock PS	2.8 mi
Lady Jane Grey PS	2.8 mi
Groby Martinshaw PS	3.2 mi

HIGH SCHOOLS

Babington Community College	1.9 mi
English Martyrs Catholic School	2.3 mi
Brookvale Groby Learning Campus	3.5 mi
Rushey Mead Academy	4.6 mi
The Roundhill Academy	6.4 mi

Discover
Anstey

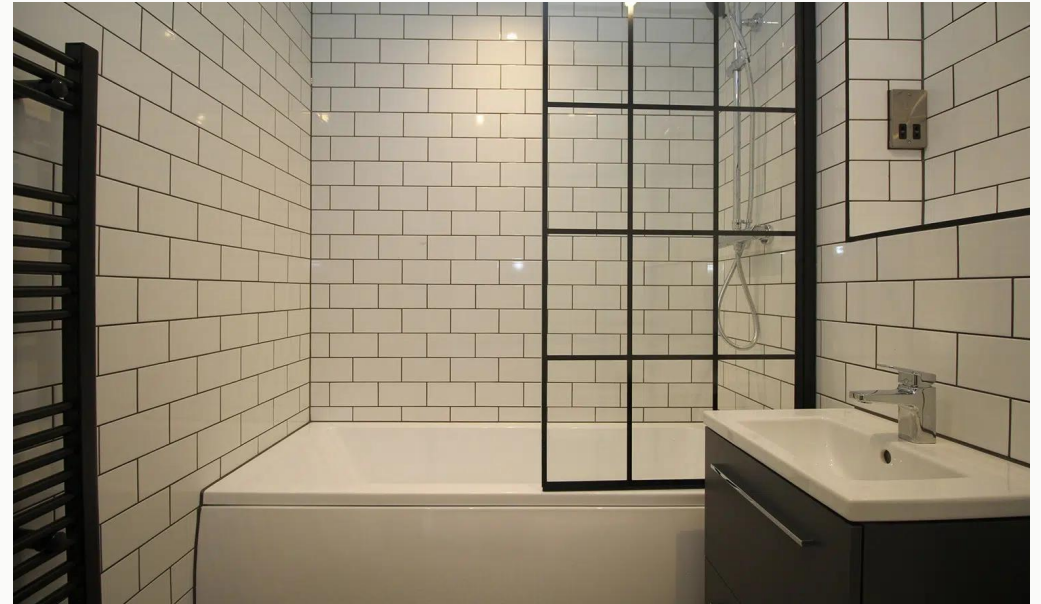


- ✓ Brand New Apartment
- ✓ Available August 2025
- ✓ Anstey Village
- ✓ High-spec
- ✓ Allocated Parking
- ✓ Appliances Included





Bedrooms



Bathroom



Bathroom



Hallway

Huntleys

[illegible]

Car Park

OPEN PLAN KITCHEN / LIVING AREA

1 PARKING SPACE PER APARTMENT

INTERNAL DOORS / WINDOWS

Doors: padded interior doors throughout.

High-quality brushed chrome ironmongery.

Antracite windows.

LIGHTING & ELECTRICAL

LED spot lights to kitchen areas.

Downlights to living areas.

LED downlights to entrance hall and bathrooms.

Sockets and lighting switch plates finished in chrome.

Dials and TV points in all living areas and bedrooms.

All apartments wired for SKY & BT to all living areas.

HEATING AND COOLING

Underfloor heating throughout all apartments, complete with individual room control.

SECURITY

24-hour security to protect your investment only.

KITCHEN SPECIFICATION

Retro-charcoal grey designer kitchen with quartz worktop.

Chrome brick-effect splash back.

Undermount sink.

Lamona electric oven (single in 1 beds & double in 2 beds)

Lamona induction hob

Lamona integrated washer dryer

Lamona integrated dishwasher

Lamona integrated fridge/freezer

FLOORS

Luxury vinyl tile to hallway, living room, kitchen and bedroom.

Ceramic tiling to all bathrooms.

BATHROOM AND EN-SUITE

Under floor heating with Ceramic designer floor tiles.

White ceramic brick tiles to wall & shower areas.

White enamel basin with white vanity unit.

Chrome mixer taps & wall-mounted shower.

Closed coupled WC with soft-close seat and dual-flush plate.

White enamel top mounted bath.

Antracite towel rail with heated wall panel.

Chrome shower door.



Latimer Street

Available
From 15/08/2025

Comes
Unfurnished

Bedrooms
2

Receptions
1

Bathrooms
1

Parking
Allocated

Postcode
LE7 7AW

Rent
£1,125 pcm

Deposit
£1,290

EPC
Ordered

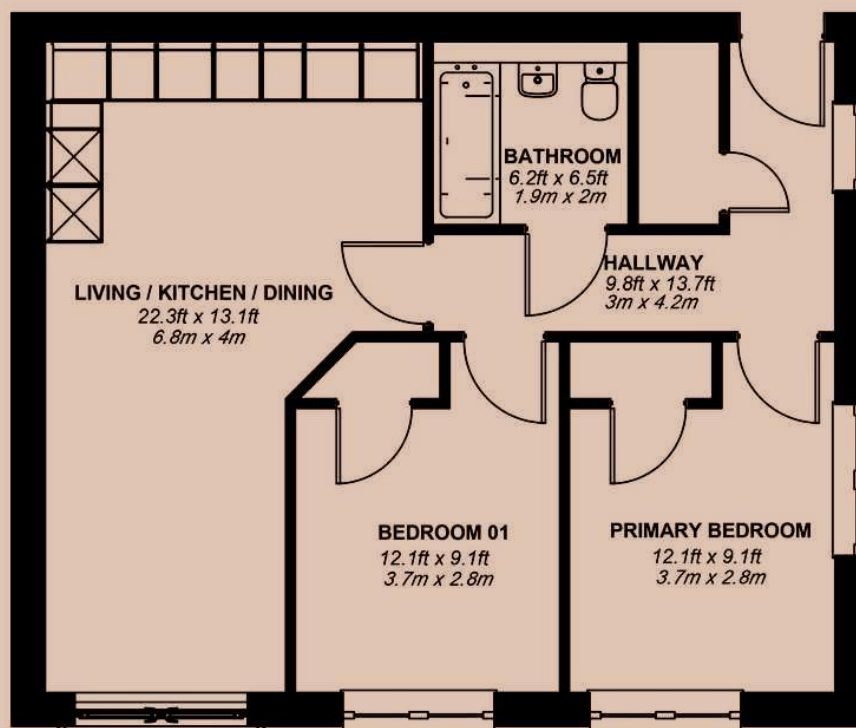
Council Tax Band
Ask Agent

ID
#17094

Updated
03/07/2025



FLAT 1, 1A
584.48 sqft
54.3 m2



Have a property like this? Let's work together.

Design and marketing are at the heart of our approach. With most people now looking for property online, we can get our clients' properties in front of as many people as the most prominent national agents. Where we differ is in the quality of our work. We create stunning digital particulars that highlight the individual attributes of every property we market, with videos and floor plans as standard.



OUR OFFICE
7 Biggin Street
Loughborough, LE11 1UA

CONTACT US
01509 320 320
let@huntleys.net

