

The image shows a bright, modern apartment interior. On the left, a dark brown leather sofa with two patterned cushions sits on a light-colored wooden coffee table. Behind the sofa is a large window with dark shutters. In the center, a tall, dark grey cabinet stands next to a black door. To the right, a kitchen area features grey cabinetry, a white subway tile backsplash, and a stainless steel range hood. The floor is made of light wood, and the ceiling has a modern track lighting system. The overall atmosphere is clean and contemporary.

The Wharf
Loughborough

2 Bed 1st Floor Apartment • LE11 1GN • £1,600 pcm • £1,840 Deposit



The Wharf, Loughborough

Presenting the largest apartment type in the block, situated on the top floor at The Wharf. Set in the highest specification development that Loughborough has to offer. This premium, fully furnished, two double-bedroom fifth-floor apartment is soon ready for occupation. In the developer's own words, "Residents can enjoy waterside living at its best, with free access to The Wharf's gymnasium, fitness studio, communal office space, rooftop terrace and concierge service. Each apartment comes with allocated parking space(s) and The Wharf offers easy access to Loughborough's town centre and train station. The Waterside Village offers the perfect live, work and play living experience". All photos, video tours & floor plans are of the actual apartment.

Lounge / Diner

Contemporary living area that is open plan to the kitchen and runs the full depth of the apartment. Featured Juliet Balcony overlooking the countryside. Includes some furniture pictured.

Kitchen

An elegant kitchen in charcoal with matching worktop and brick-bond tiling. Hidden away behind the smart cabinets, there are all the integrated appliances, including a fridge-freezer, dual ovens, washer-dryer, easy-clean hob and a dishwasher - open plan to the living area.

Master Bedroom

Elegant and spacious double bedroom with benefits of an ensuite shower room featuring floor-to-ceiling window. Wood effect flooring and exposed brick completes the look. Includes some furniture pictured.

Bedroom Two

Generously proportioned second double bedroom, floor to ceiling windows flood the room with natural light. Includes some furniture pictured.

Bathroom

This beautiful three-piece bathroom comes complete with a "rain shower" head over the bath, heated towel rail and shaving point. Classic, brick-bond tiling completes the look.

Ensuite

A three-piece en-suite shower room with a matching finish to the bathroom, heated towel rail and shaving point. Classic, brick-bond tiling completes the look. Floor to ceiling window.

Rooftop Terrace

A smart and regularly maintained garden is available for the The Wharf resident's leisure.

For more information about this property, visit our website huntleys.net.

Energy Performance

Score	Energy rating	Current	Potential
92+	A		
81-91	B		
69-80	C	75 C	75 C
55-68	D		
39-54	E		
21-38	F		
1-20	G		

We aim to make our particulars both accurate and reliable. However they are not guaranteed; nor do they form part of an offer or contract. If you require clarification on any points then please contact us, especially if you are traveling some distance to view. All measurements are to widest point.



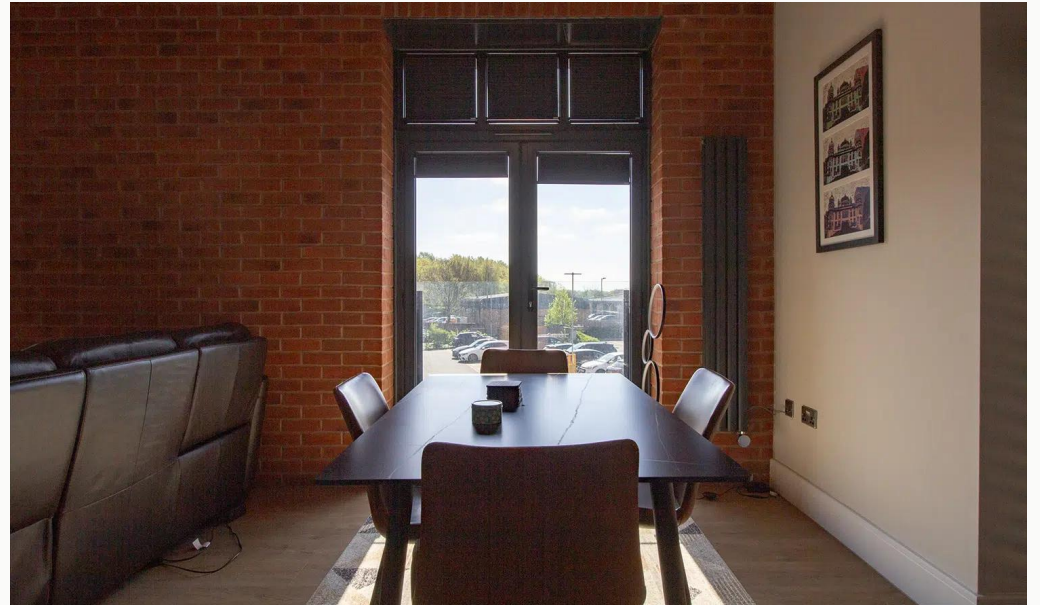
Rooftop Terrace



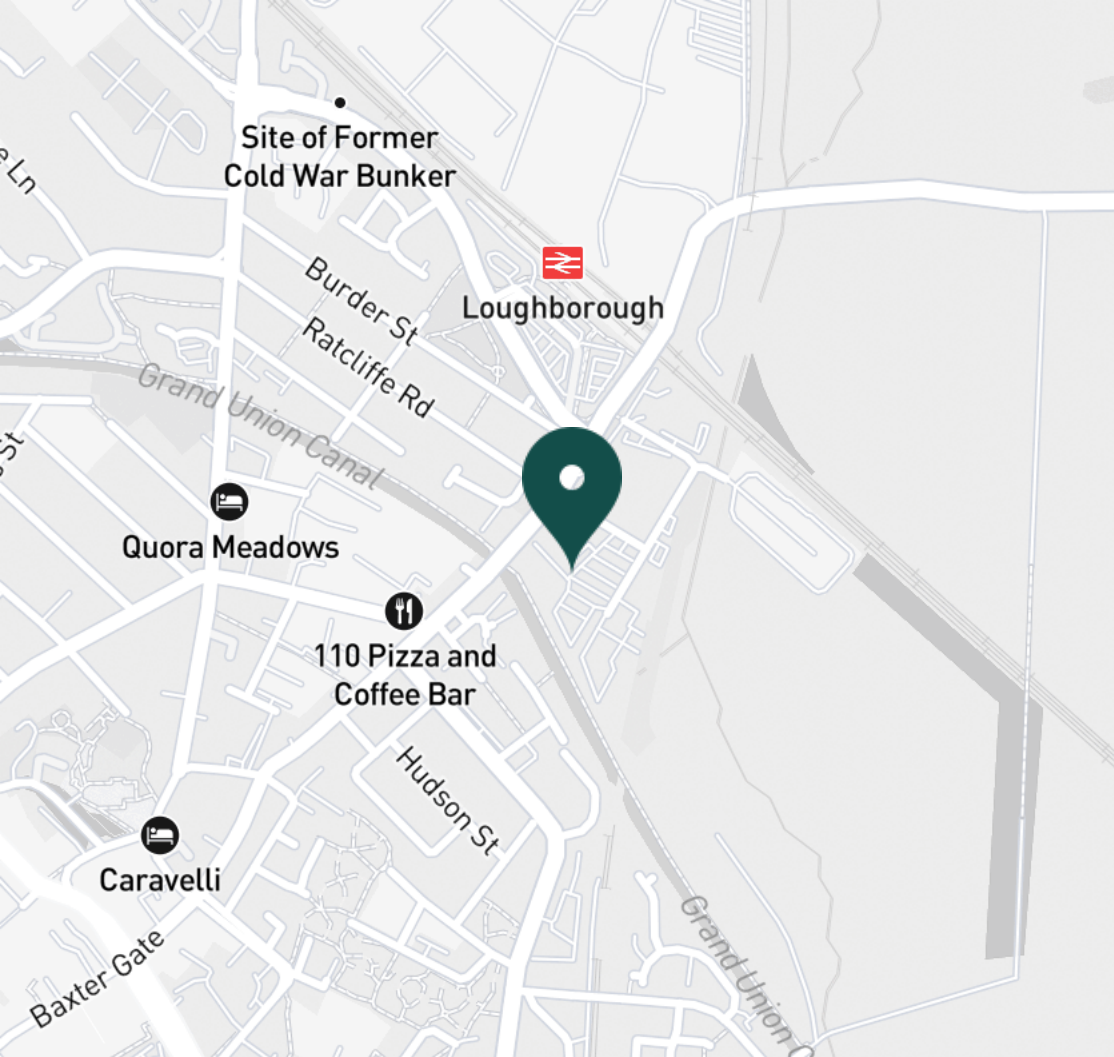
Reception



Lounge / Diner



Lounge / Diner



SUPERMARKETS

Tesco Superstore Loughborough	0.8 mi
Marks & Spencer	0.9 mi
Aldi Loughborough	1.0 mi
Lidl Loughborough	1.1 mi
Sainsburys Loughborough	1.2 mi

GYMS

CrossFit Loughborough	0.5 mi
PureGym Loughborough	0.7 mi
Anytime Fitness Loughborough	0.8 mi
Dynamite Gym Ltd	0.8 mi
NPC Performance Centre	1.0 mi

TRAIN STATIONS

Loughborough	0.3 mi
Barrow upon Soar	3.9 mi
Sileby	6.0 mi
Syston	10.3 mi
East Midlands Parkway	10.5 mi

NURSERY SCHOOLS

Cobden Childrens Centre	0.6 mi
Babblebrooke Day Nursery	0.7 mi
Lime Tree Nursery	0.9 mi
Small World Nursery	1.1 mi
Emmanuel PS	1.2 mi

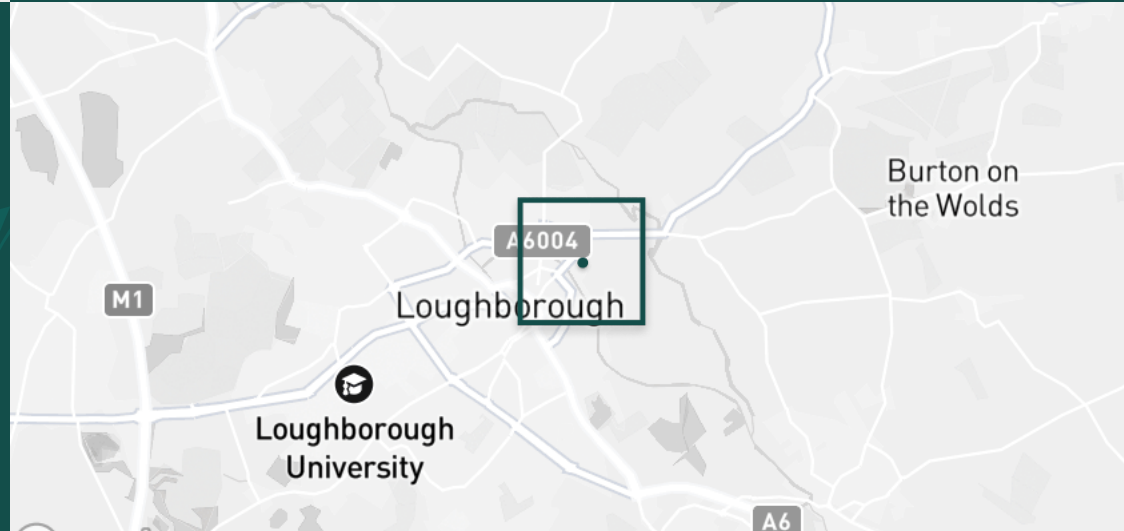
PRIMARY SCHOOLS

Rendell Primary School	0.5 mi
Cobden PS	0.8 mi
Fairfield Preparatory Sch	1.0 mi
St Marys Catholic PS	1.3 mi
Our Lady's Convent Sch	1.4 mi

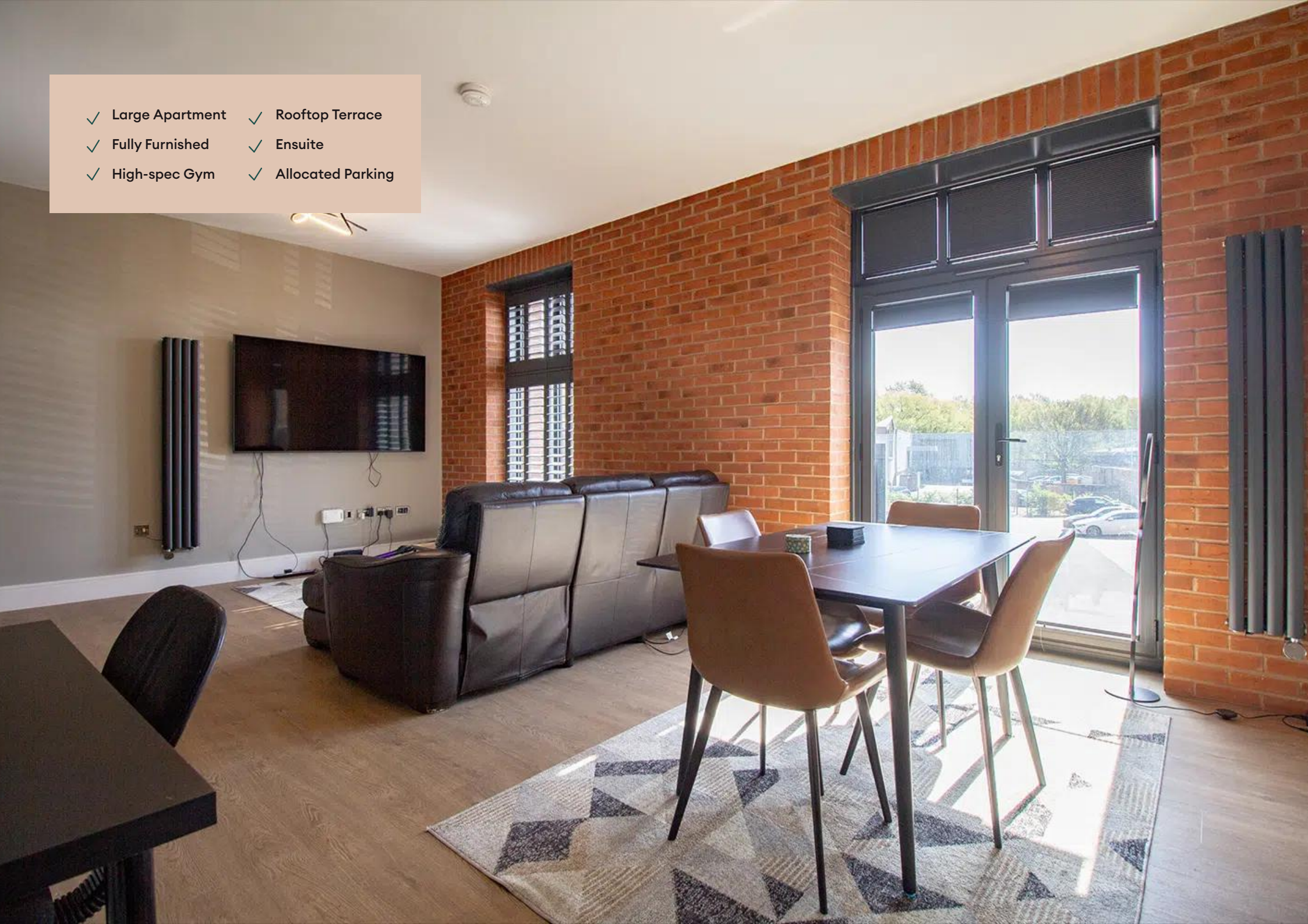
HIGH SCHOOLS

Limehurst Academy	0.6 mi
Our Lady's Convent Sch	1.4 mi
Loughborough High Sch	1.4 mi
RNIB College Loughborough	1.5 mi
Loughborough Grammar Sch	1.7 mi

Discover
Loughborough



- ✓ Large Apartment
- ✓ Fully Furnished
- ✓ High-spec Gym
- ✓ Rooftop Terrace
- ✓ Ensuite
- ✓ Allocated Parking





Lounge / Diner



Lounge / Diner



Kitchen



Kitchen



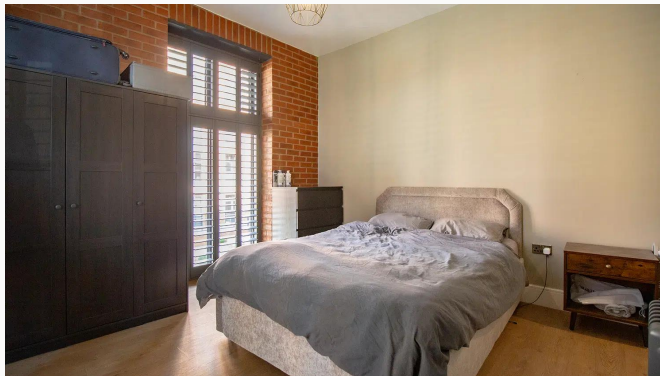
Kitchen



Kitchen



Kitchen



Master Bedroom



Master Bedroom



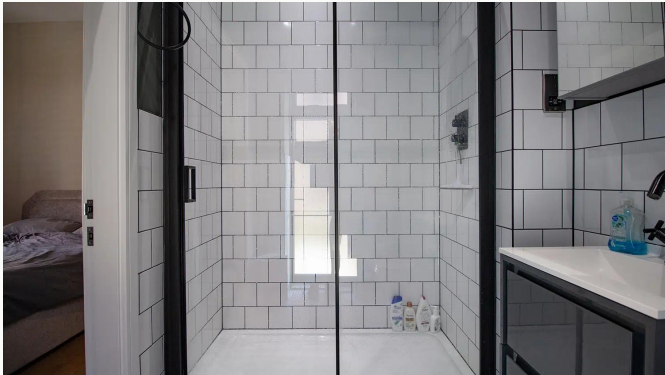
Master Bedroom



Master Bedroom



Ensuite



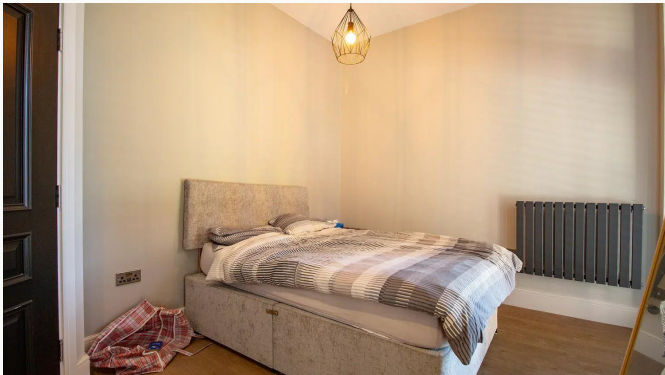
Ensuite



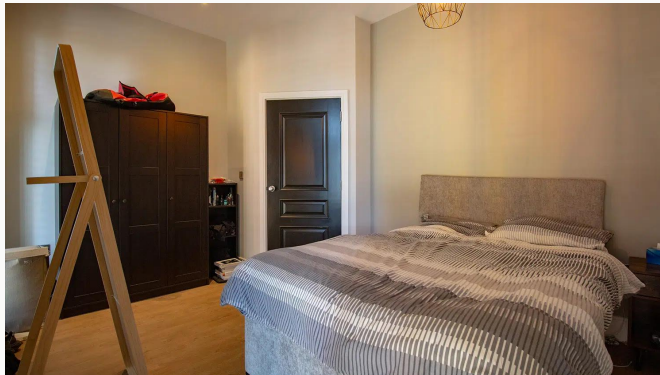
Bedroom Two



Bedroom Two



Bedroom Two



Bedroom Two



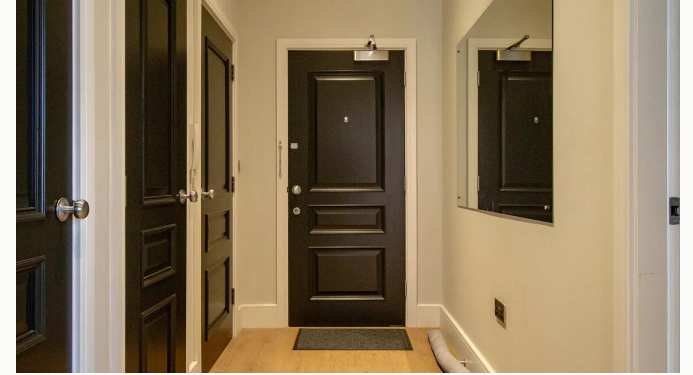
Bathroom



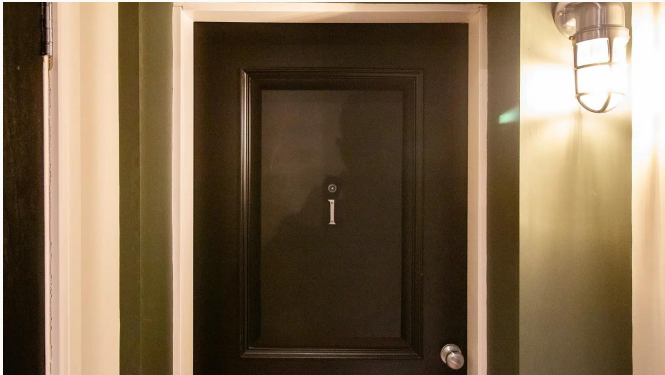
Bathroom



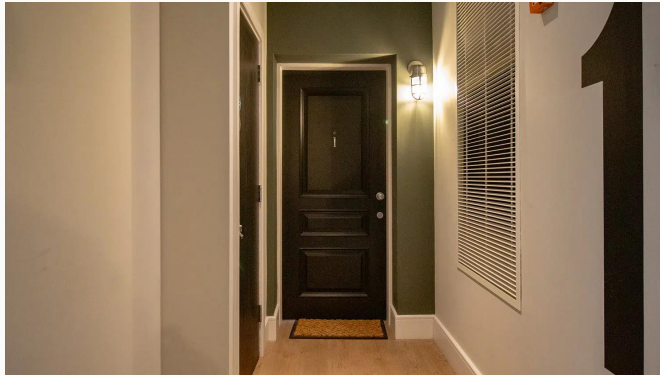
Hallway



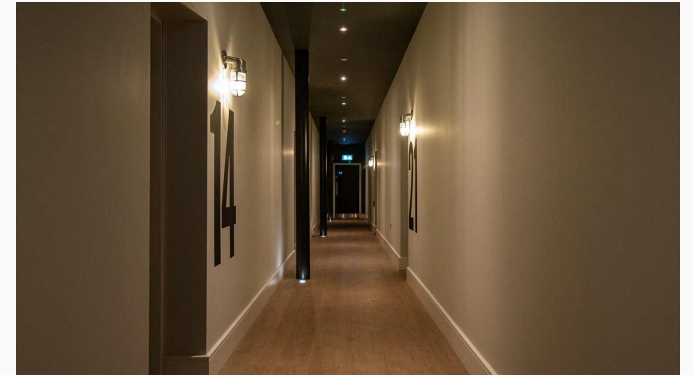
Hallway



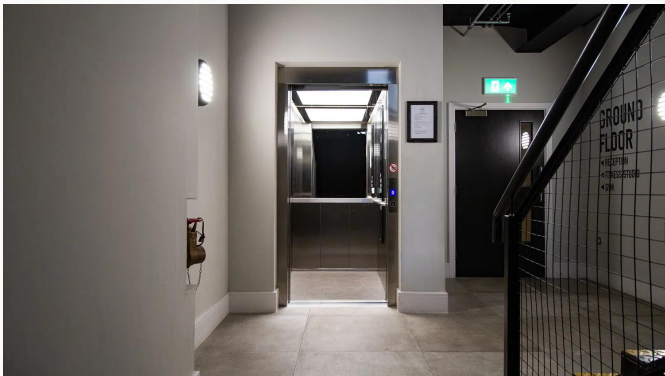
Apartment Entrance



Apartment Entrance



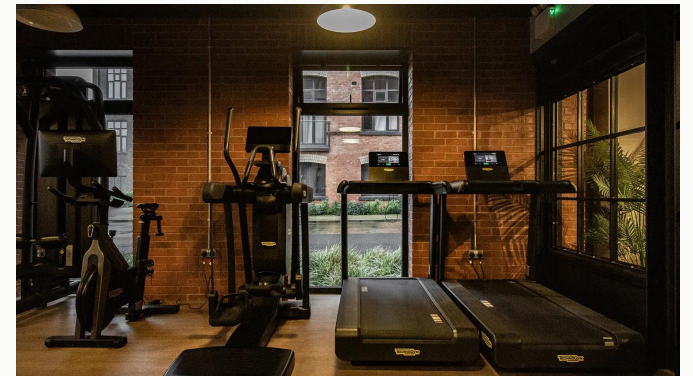
Communal Hallway



Lift



Reception



Gym



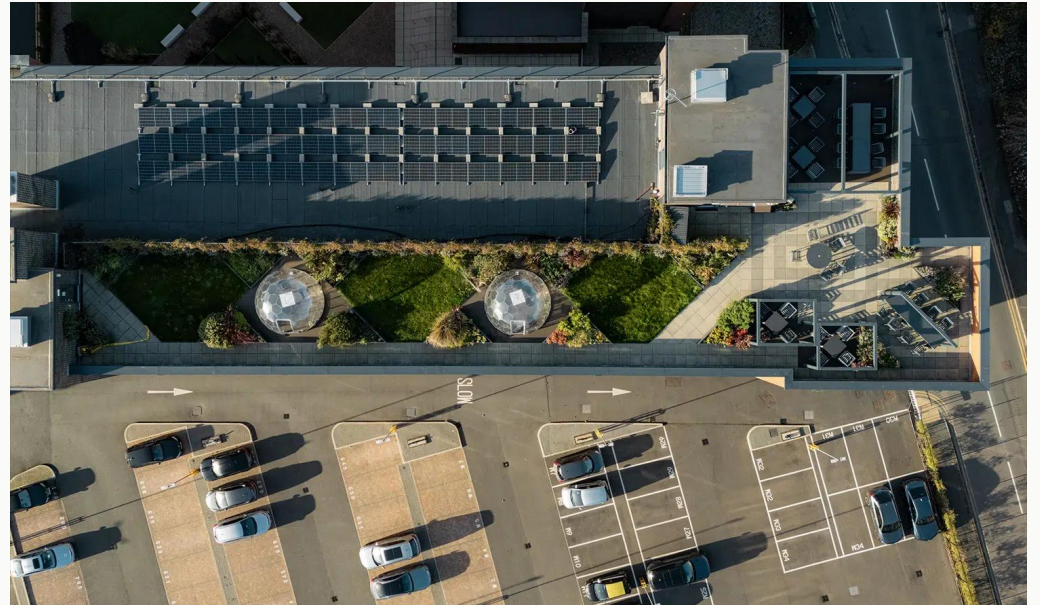
Gym



Fitness Studio



Fitness Studio



Rooftop Terrace



The Wharf

Available
From 01/07/2026

Comes
Furnished

Bedrooms
2

Receptions
1

Bathrooms
2

Parking
Allocated

Postcode
LE11 1GN

Rent
£1,600 pcm

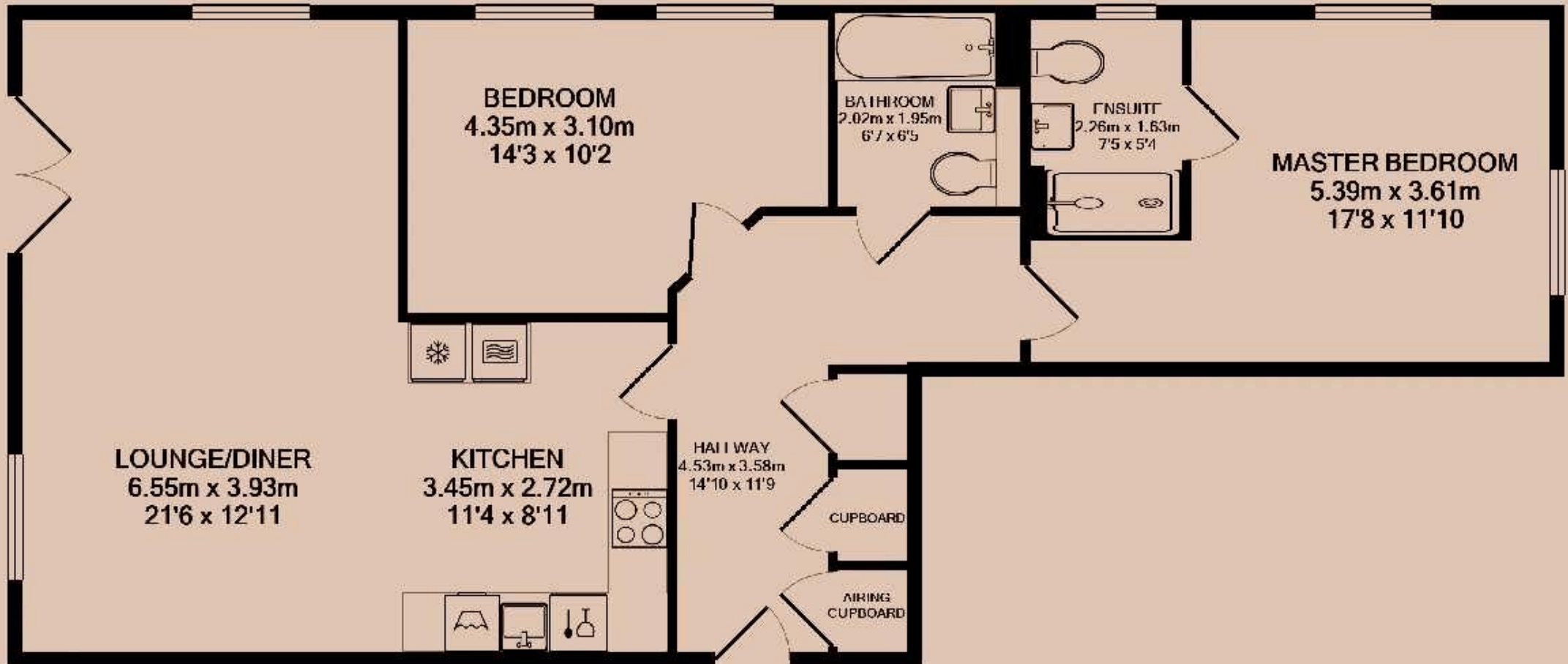
Deposit
£1,840

EPC
75 | C

Council Tax Band
B

ID
#18762

Updated
05/05/2026



Have a property like this? Let's work together.

Design and marketing are at the heart of our approach. With most people now looking for property online, we can get our clients' properties in front of as many people as the most prominent national agents. Where we differ is in the quality of our work. We create stunning digital particulars that highlight the individual attributes of every property we market, with videos and floor plans as standard.



OUR OFFICE
7 Biggin Street
Loughborough, LE11 1UA

CONTACT US
01509 320 320
let@huntleys.net

