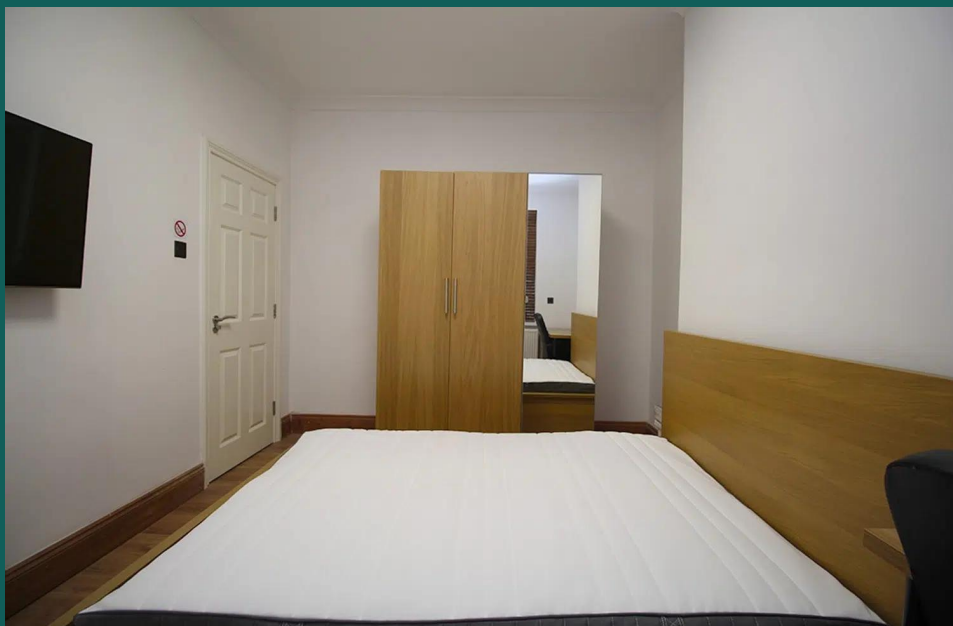


A modern bedroom with a wooden bed, wardrobe, and desk. The room features light-colored wood paneling for the bed, wardrobe, and desk. A black office chair is positioned at the desk. The walls are white, and the floor is made of light wood. A large window is visible on the right side of the room.

Ratcliff Road

Loughborough

1 Bed Ground Floor Room • LE11 1LH • £500 pcm • £570 Deposit



Ratcliff Road, Loughborough

Contemporary GROUND floor LARGE double BEDROOM in a shared house with 4K TV. Fully FURNISHED to a high standard. STYLISH kitchen with all APPLIANCES included. BILLS, CLEANING and 300mbps WIFI included. Just a short WALK into town and the TRAIN STATION.

The bedroom 4m (13'1) x 3m (9'10)

The bedroom available comes fully furnished with bed and memory foam mattress, 42 inch 4K Toshiba TV, Freeview, several fitted wardrobes and bedside cabinet, desk and chair. Plenty of power points, double glazed and centrally heated. Marked as "this one" on the floor plan.

Kitchen 3.9m (12'10) x 2.6m (8'6)

Well set out kitchen complete with all the appliances you need. Access to the rear yard.

Shower room 1.78m (5'10) x 1.58m (5'2)

Located on the first floor just down from the bedroom. This Shower room includes oversized shower, toilet, sink and heated towel rail.

Bathroom 3.1m (10'2) x 2.6m (8'6)

Located on the first floor next to the shower room. This four piece bathroom includes bath, separate shower cubical, toilet, sink, heated towel rail and cabinet.

Rear Yard

A quite and private rear yard laid to patio. Side access makes this a convenient place to store bikes.

Parking

On street parking is available with a permit.

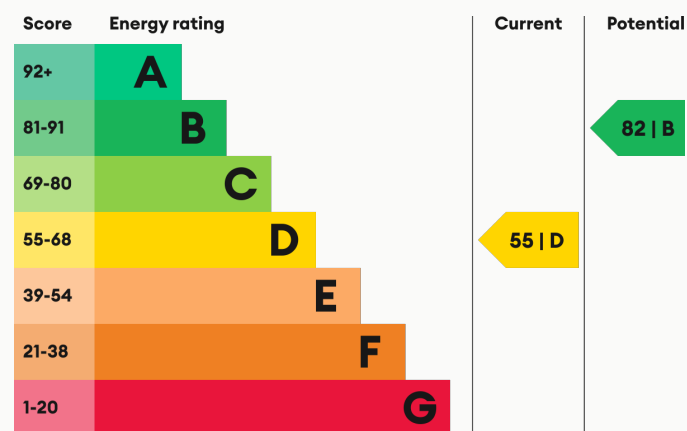
Heating

Gas fired central heating.

Glazing

Modern, good quality, uPVC double glazing.

Energy Performance



We aim to make our particulars both accurate and reliable. However they are not guaranteed; nor do they form part of an offer or contract. If you require clarification on any points then please contact us, especially if you are traveling some distance to view. All measurements are to widest point.



Bedroom



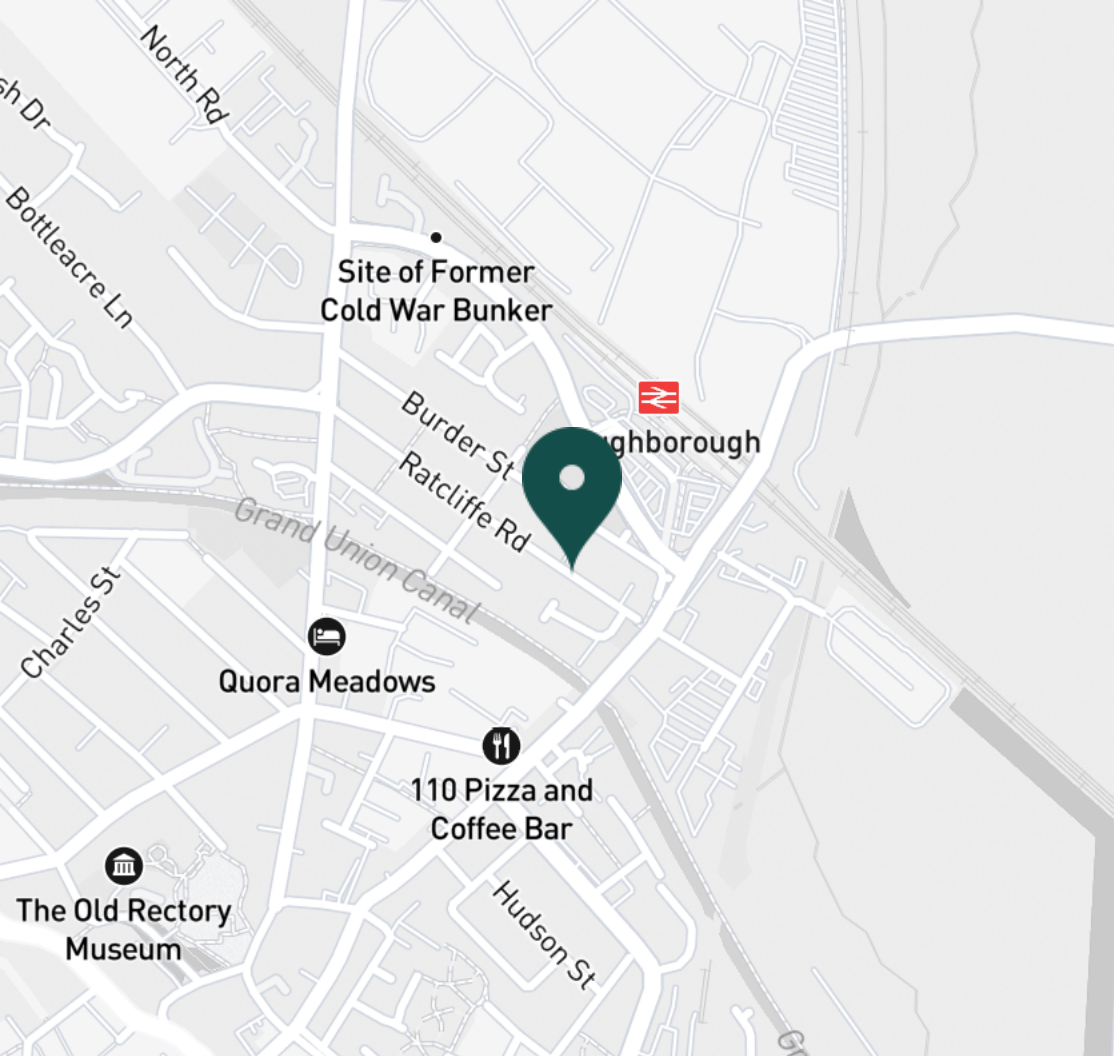
Bedroom



Bedroom



Bedroom



SUPERMARKETS

Aldi Loughborough	0.6 mi
Tesco Superstore Loughborough	0.8 mi
Marks & Spencer	0.9 mi
Lidl Loughborough	1.0 mi
Sainsburys Loughborough	1.2 mi

GYMS

CrossFit Loughborough	0.3 mi
PureGym Loughborough	0.7 mi
Anytime Fitness Loughborough	0.8 mi
Dynamite Gym Ltd	1.1 mi
NPC Performance Centre	1.3 mi

TRAIN STATIONS

Loughborough	0.6 mi
Barrow upon Soar	4.4 mi
Sileby	6.3 mi
East Midlands Parkway	10.3 mi
Syston	11.2 mi

NURSERY SCHOOLS

Babblebrooke Day Nursery	0.7 mi
Cobden Childrens Centre	0.8 mi
Small World Nursery	1.1 mi
Lime Tree Nursery	1.2 mi
Busy Bees in Loughborough	1.3 mi

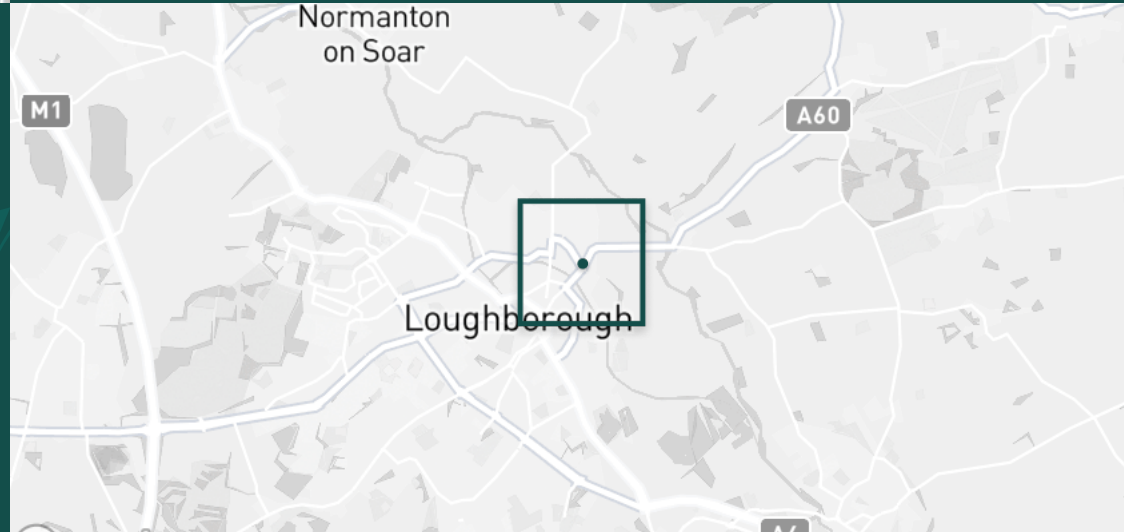
PRIMARY SCHOOLS

Rendell Primary School	0.5 mi
Cobden PS	1.2 mi
Fairfield Preparatory Sch	1.3 mi
St Marys Catholic PS	1.3 mi
Loughborough CE PS	1.5 mi

HIGH SCHOOLS

Limehurst Academy	0.6 mi
RNIB College Loughborough	1.5 mi
Loughborough Grammar Sch	1.6 mi
Loughborough High Sch	1.7 mi
Our Lady's Convent Sch	1.7 mi

Discover
Loughborough



✓ Fully Furnished

✓ 300 mbps Wi-Fi

✓ Bills included

✓ Council Tax included

✓ Students or professionals

✓ Ground floor location





Kitchen



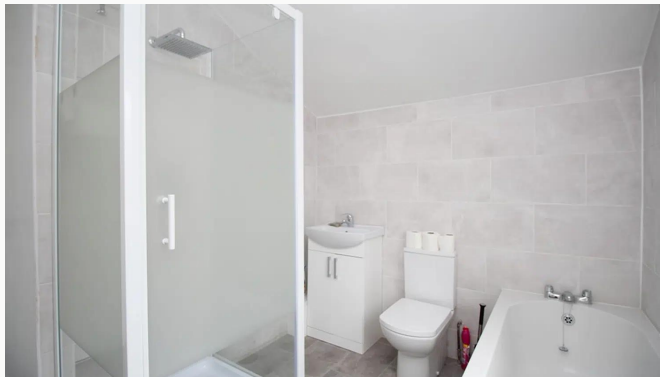
Kitchen



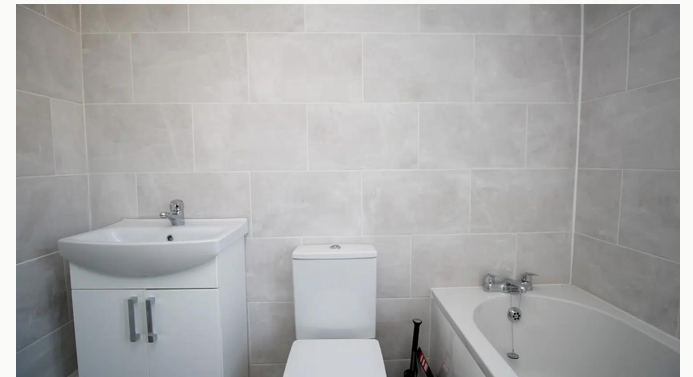
Kitchen



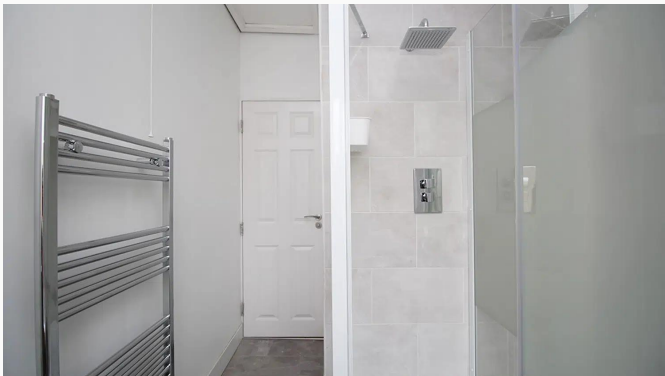
Kitchen



Bathroom



Bathroom



Bathroom



Bathroom



Bathroom



Ratcliffe Road



Ratcliffe Road



Ratcliffe Road

Available
From 27/01/2025

Comes
Furnished

Bedrooms
1

Receptions
0

Bathrooms
2

Parking
With permit

Postcode
LE11 1LH

Rent
£500 pcm

Deposit
£570

EPC
55 | D

Council Tax Band
A

ID
#2633

Updated
07/03/2025



Have a property like this? Let's work together.

Design and marketing are at the heart of our approach. With most people now looking for property online, we can get our clients' properties in front of as many people as the most prominent national agents. Where we differ is in the quality of our work. We create stunning digital particulars that highlight the individual attributes of every property we market, with videos and floor plans as standard.



OUR OFFICE
7 Biggin Street
Loughborough, LE11 1UA

CONTACT US
01509 320 320
let@huntleys.net



Huntleys

