

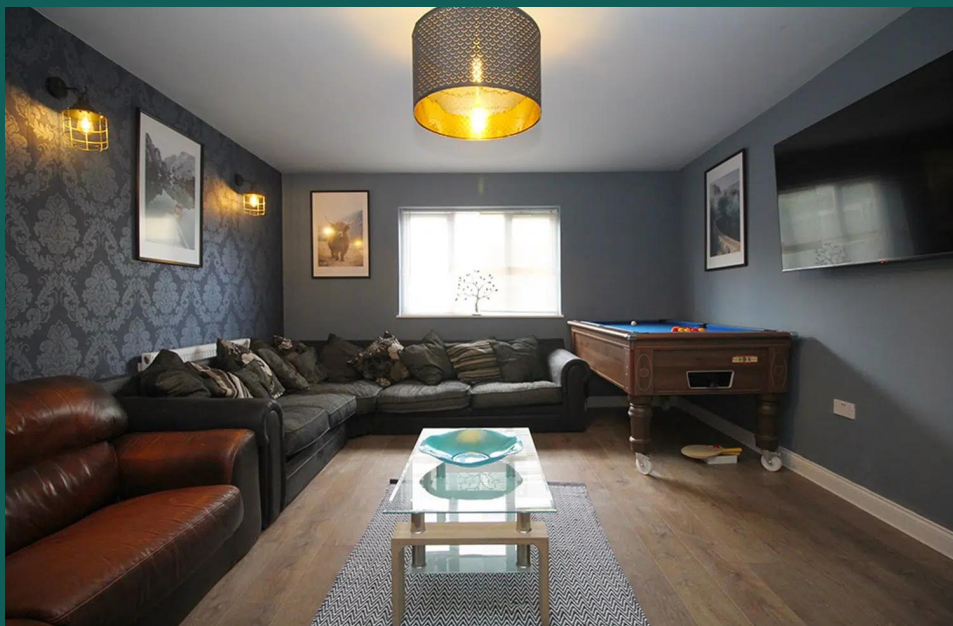
Student



Carington Street

Loughborough

9 Bed Detached House • LE11 5NF • £137 pppw • £200 Deposit Per Person



Carington Street, Loughborough

NINE DOUBLE bedrooms. TWO separate lounges, THREE washrooms, a POOL TABLE, parking for several cars, OPEN PLAN kitchen, all the kitchen APPLIANCES including AMERICAN style fridge-freezer and a DISHWASHER. One of the LARGEST student homes in LOUGHBOROUGH. BILLS INCLUDED. 2025 - 2026 Academic Year.

Kitchen Diner 4.9m (16'1) x 6.2m (20'4)

Stunning gloss white kitchen complete with two ovens and hobs, two American style fridge freezers, dishwasher and washing machine. Tumble Dryer optional.

Games room 5.2m (17'1) x 4.3m (14'1)

Contemporary lounge with enough seating for everyone. Complete with wall-mounted TV, pool table and plenty of room for the cues.

Hot Desk Room 4.3m (14'1) x 3.8m (12'6)

Another room? This place is enormous! Yes, that's right, a second lounge with patio doors overlooking the rear garden.

Bedrooms x9

All the bedrooms in this house are good sized double rooms fully furnished with double beds, side tables, desks, chairs, wardrobes and chests of draws. The rooms are decorated in various colours, all of which are double glazed and centrally heated. One of which even has an ensuite.

Bathroom 3.2m (10'6) x 2.4m (7'10)

Contemporary four piece bathroom suite complete with bath, separate electric shower and heated towel rail.

Shower room 2.8m (9'2) x 1.8m (5'11)

Contemporary three piece shower suite with electric shower and heated towel rail.

Ensuite

An ensuite shower room, accessed via one of the bedrooms.

Garden

Private and low maintenance rear garden with patio, decking and lawn. Great for BBQs in the summer. Convenient side access makes this a great place to secure bikes.

Parking

Driveway parking for approximately six cars to the front of the property with additional space available on the surrounding roads without restriction.

Utilities

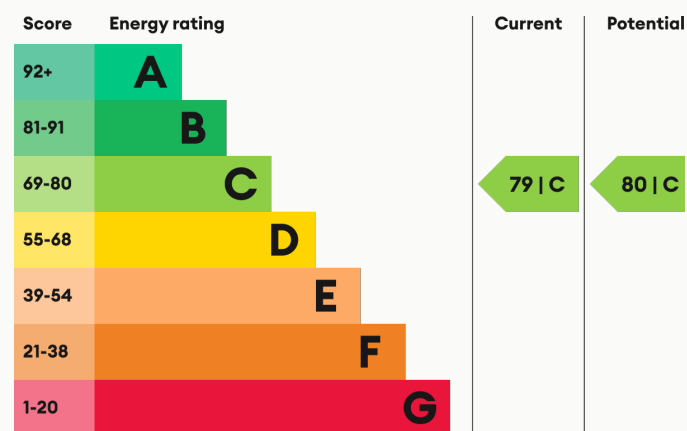
Bills Included.

Heating

Gas-fired central heating.

For more information about this property, visit our website huntleys.net.

Energy Performance



We aim to make our particulars both accurate and reliable. However they are not guaranteed; nor do they form part of an offer or contract. If you require clarification on any points then please contact us, especially if you are traveling some distance to view. All measurements are to widest point.



Lounge / pool room



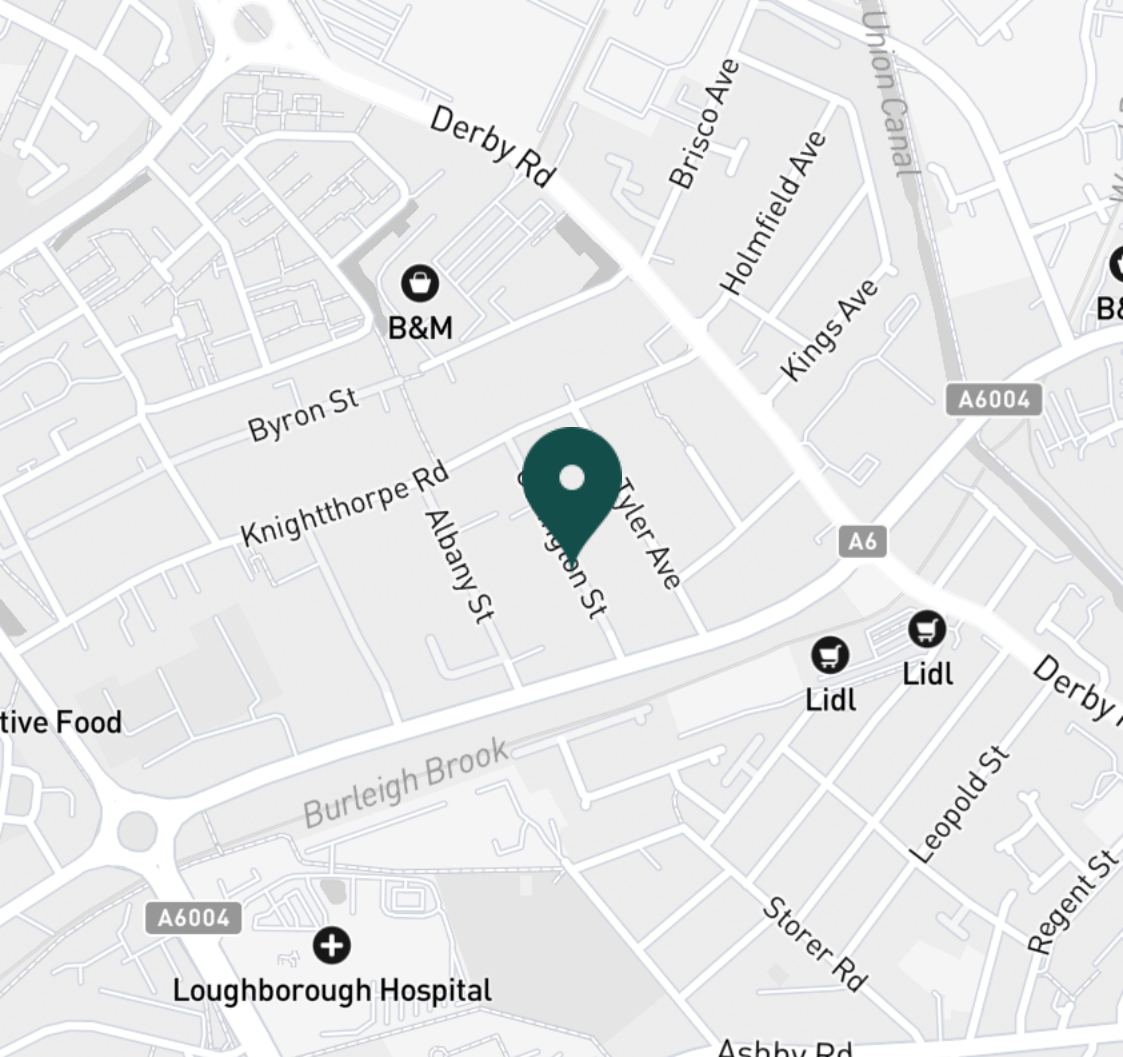
Lounge / pool room



Pool table



Hallway



SUPERMARKETS

Lidl Loughborough	0.4 mi
Aldi Loughborough	0.6 mi
Co-op Food Knightthorpe Rd	0.7 mi
Tesco Superstore Loughborough	0.7 mi
Sainsburys Loughborough	1.0 mi

GYMS

Anytime Fitness Loughborough	0.6 mi
PureGym Loughborough	0.8 mi
Loughborough University Pool	0.9 mi
Dynamite Gym Ltd	1.0 mi
Loughborough Sport	1.0 mi

TRAIN STATIONS

Loughborough	1.4 mi
Barrow upon Soar	4.7 mi
Sileby	6.5 mi
East Midlands Parkway	9.5 mi
Syston	11.4 mi

NURSERY SCHOOLS

Little House Day Nursery	0.6 mi
Busy Bees in Loughborough	0.7 mi
Babblebrooke Day Nursery	0.8 mi
Robert Bakewell Playgroup	0.8 mi
Small World Nursery	0.9 mi

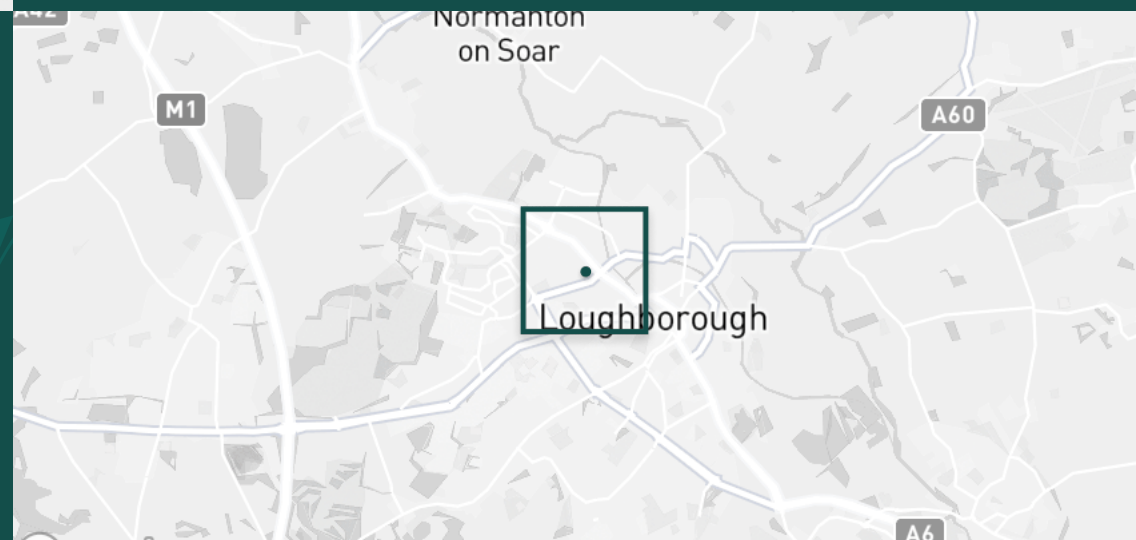
PRIMARY SCHOOLS

Robert Bakewell PS	0.9 mi
Thorpe Acre Junior Sch	0.9 mi
Rendell Primary School	1.1 mi
Ashmount Sch	1.2 mi
St Marys Catholic PS	1.2 mi

HIGH SCHOOLS

Limehurst Academy	0.8 mi
The Garendon High Sch	1.0 mi
De Lisle Catholic Science C	1.0 mi
Loughborough College	1.0 mi
Lboro Uni School Of The Arts	1.1 mi

Discover
Loughborough



- ✓ Nine Double Bedrooms
- ✓ Fully Furnished
- ✓ Bills included
- ✓ Pool Table
- ✓ 400 Mbps broadband
- ✓ Plenty of Parking





Kitchen Diner



Kitchen Diner



Kitchen Diner



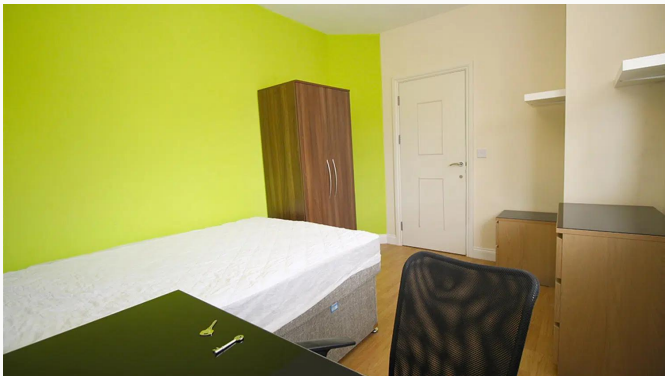
Bedroom one



Bedroom one



Bedroom Two



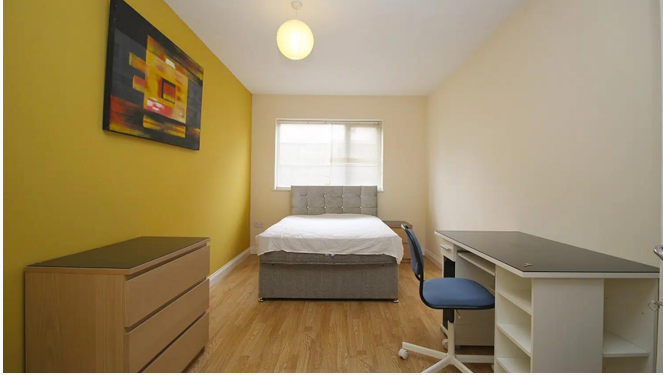
Bedroom Two



Bathroom



Bathroom



Bedroom Three



Bedroom Four



Landing



Bedroom Five



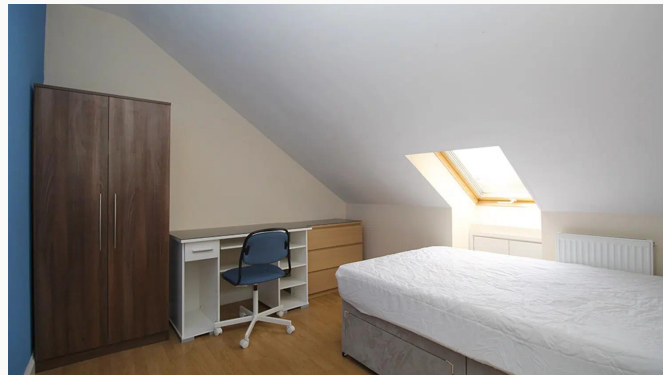
Bedroom Six



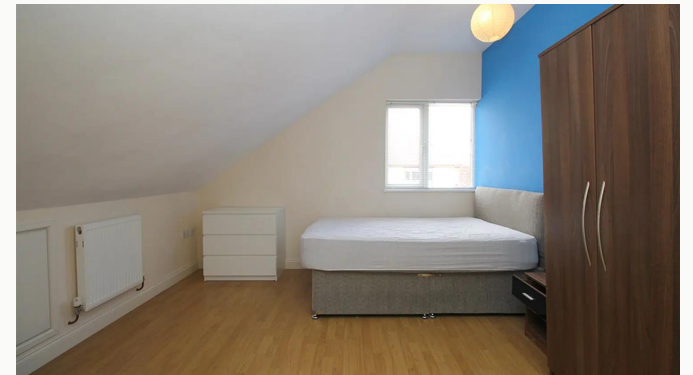
Shower room



Shower room



Bedroom Seven



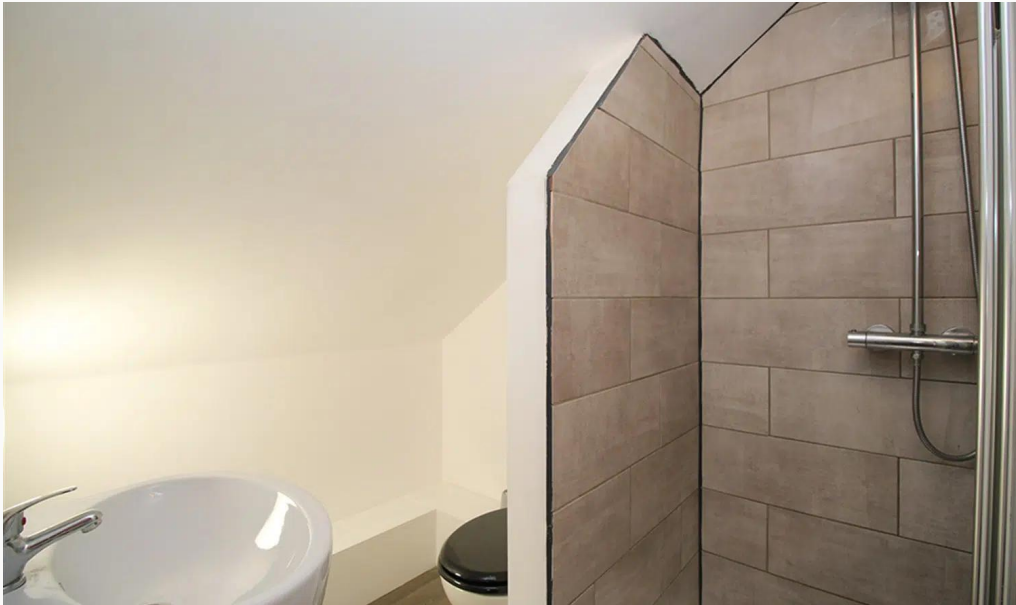
Bedroom Eight



Bedroom Eight



Bedroom Nine



Bedroom Nine ensuite

Available
From 01/07/2025

Comes
Furnished

Bedrooms
9

Receptions
2

Bathrooms
3

Parking
Driveway

Postcode
LE11 5NF

Rent
£137 pppw

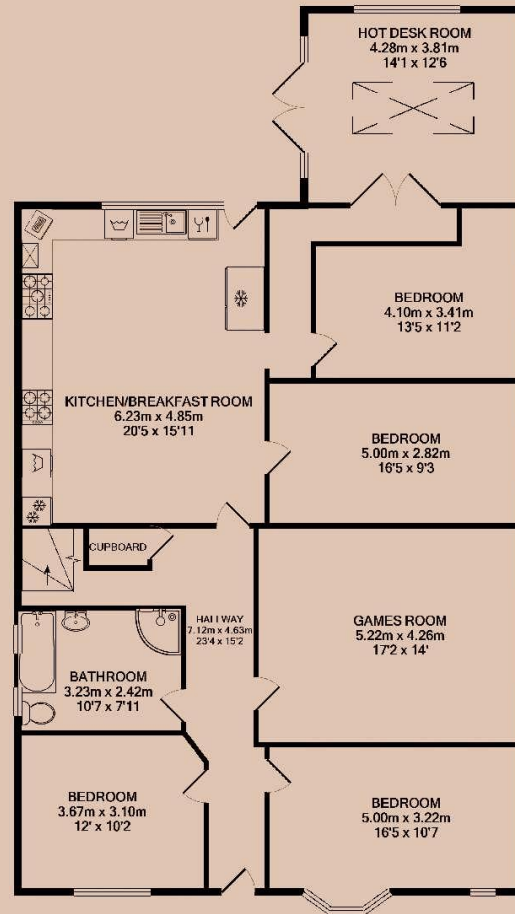
Deposit
£1,800

EPC
79 | C

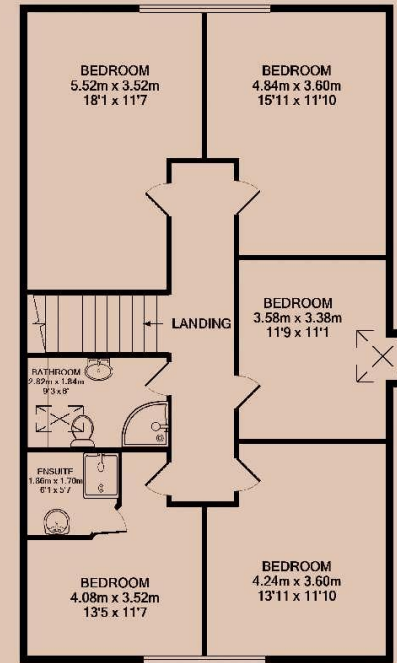
Council Tax Band
C

ID
#474

Updated
18/10/2024



GROUND FLOOR



1ST FLOOR

Have a property like this? Let's work together.

Design and marketing are at the heart of our approach. With most people now looking for property online, we can get our clients' properties in front of as many people as the most prominent national agents. Where we differ is in the quality of our work. We create stunning digital particulars that highlight the individual attributes of every property we market, with videos and floor plans as standard.



OUR OFFICE
7 Biggin Street
Loughborough, LE11 1UA

CONTACT US
01509 320 320
let@huntleys.net

