



Antill Street

Nottingham

3 Bed Terraced House • NG9 7FT • £1,150 pcm • £1,320 Deposit



Antill Street, Nottingham

Now available to let in Stapleford. A three-bedroom, unfurnished, terraced home, recently refurbished throughout. This property comes with a good sized lounge, kitchen, and bathroom. On the first floor is three bedrooms. On street parking available nearby.

Lounge

Set at the front of the property overlooking Antill Street, a good sized living area.

Kitchen

A new kitchen, overlooking the rear garden. This kitchen has space for multiple appliances.

Master Bedroom

Overlooking Antill Street, the largest of the three bedrooms. Includes built-in wardrobe space.

Bedroom Two

A second bedroom, on the first floor overlooking the rear garden.

Bedroom Three

A third bedroom on the first floor, also overlooking the rear garden.

Bathroom

Set on the ground floor, a new bathroom including a bath, sink, toilet, shower above the bath, and interactive mirror on the wall.

Garden

This garden is set to the rear of the property. Please note that the garden will be cleared. Shared access through this garden for neighbouring properties.

Parking

On Street parking available nearby.

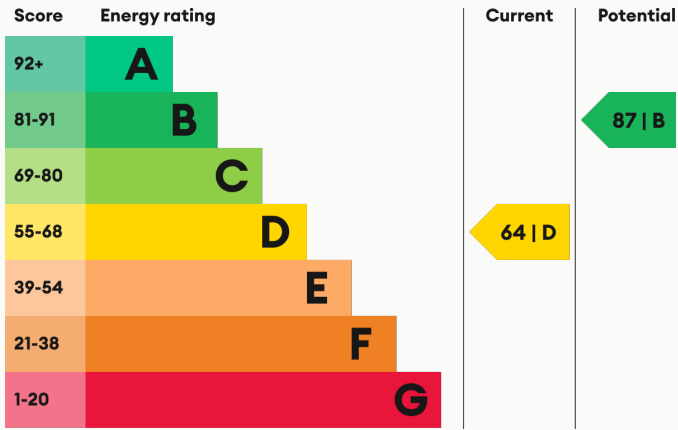
Heating

Gas-fired central heating.

Glazing

Modern, good quality, uPVC double glazing.

Energy Performance



We aim to make our particulars both accurate and reliable. However they are not guaranteed; nor do they form part of an offer or contract. If you require clarification on any points then please contact us, especially if you are traveling some distance to view. All measurements are to widest point.



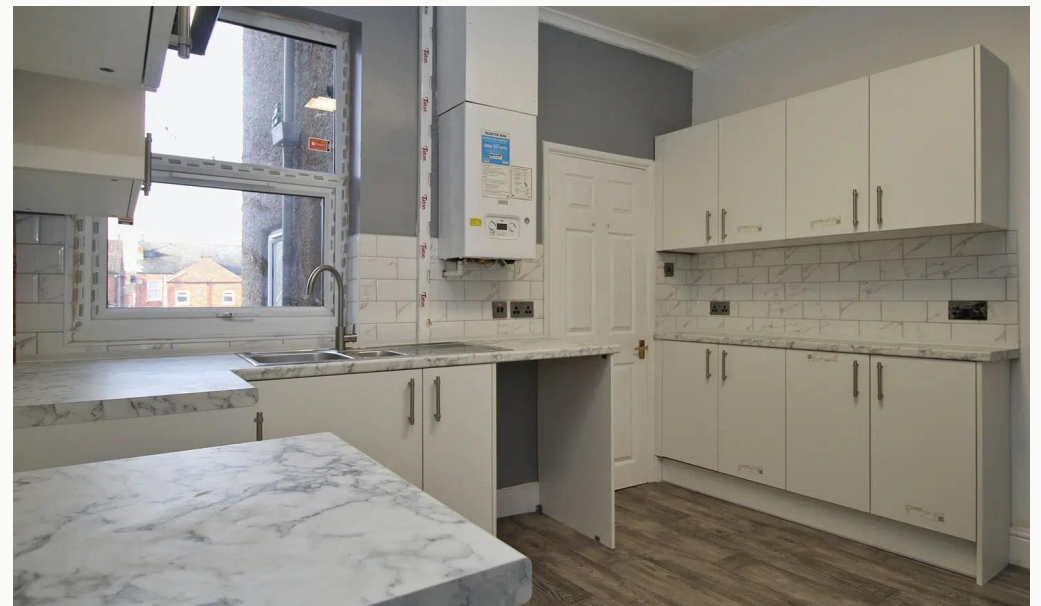
Lounge



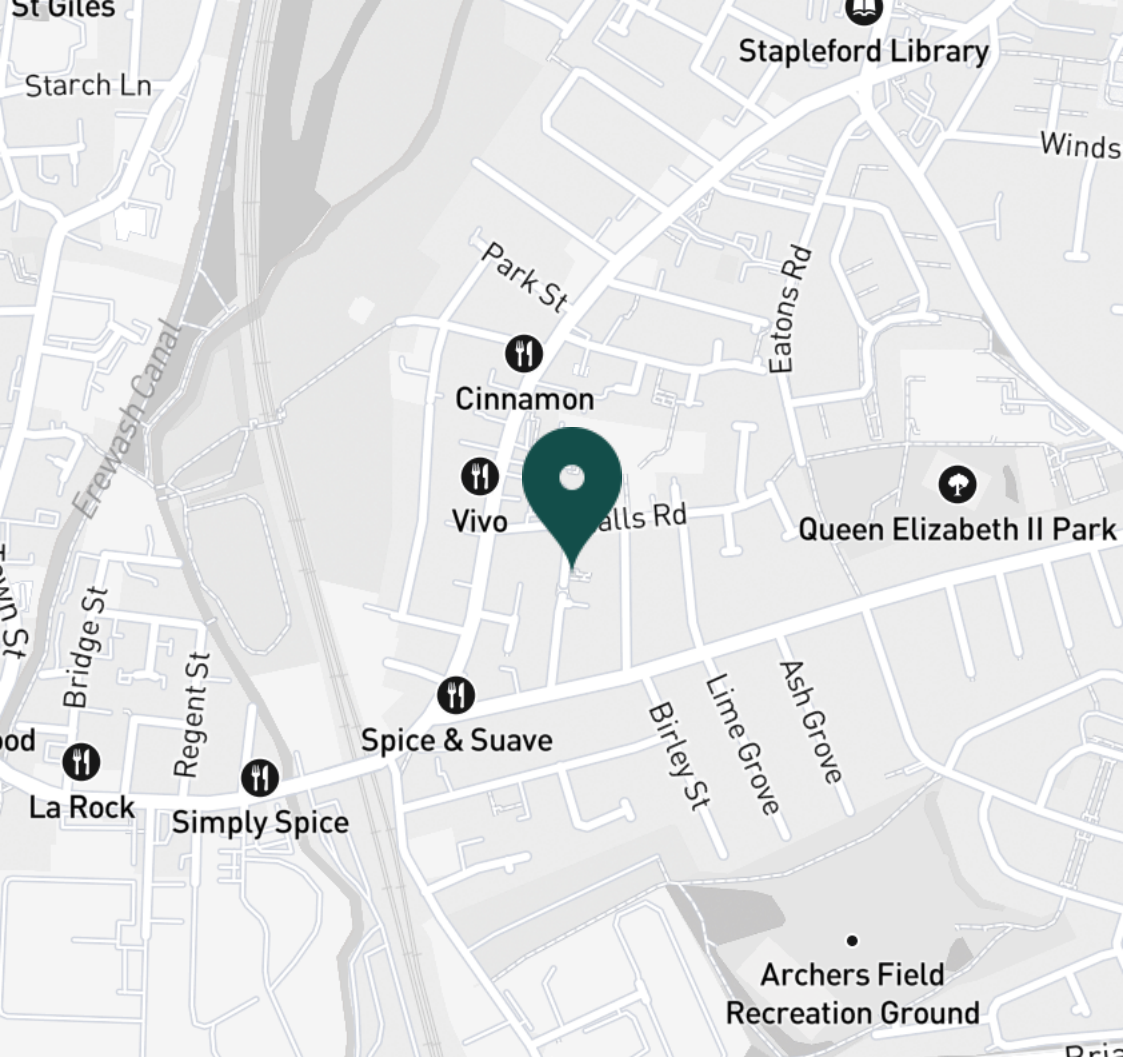
Lounge



Lounge



Kitchen



SUPERMARKETS

Lidl Sandiacre	0.6 mi
Tesco Extra Toton	2.1 mi
Lidl Chilwell	2.8 mi
Aldi Long Eaton	2.9 mi
Asda Long Eaton	2.9 mi

GYMS

Muscle Tone Gym	0.1 mi
Bramcote Leisure Centre	2.3 mi
West Park Leisure Centre	2.9 mi
Village Gym Nottingham	2.9 mi
ILKESTON GYM AND FITNESS	4.5 mi

TRAIN STATIONS

Long Eaton	3.5 mi
Beeston	4.9 mi
Spondon	7.6 mi
Nottingham	8.4 mi
East Midlands Parkway	9.3 mi

NURSERY SCHOOLS

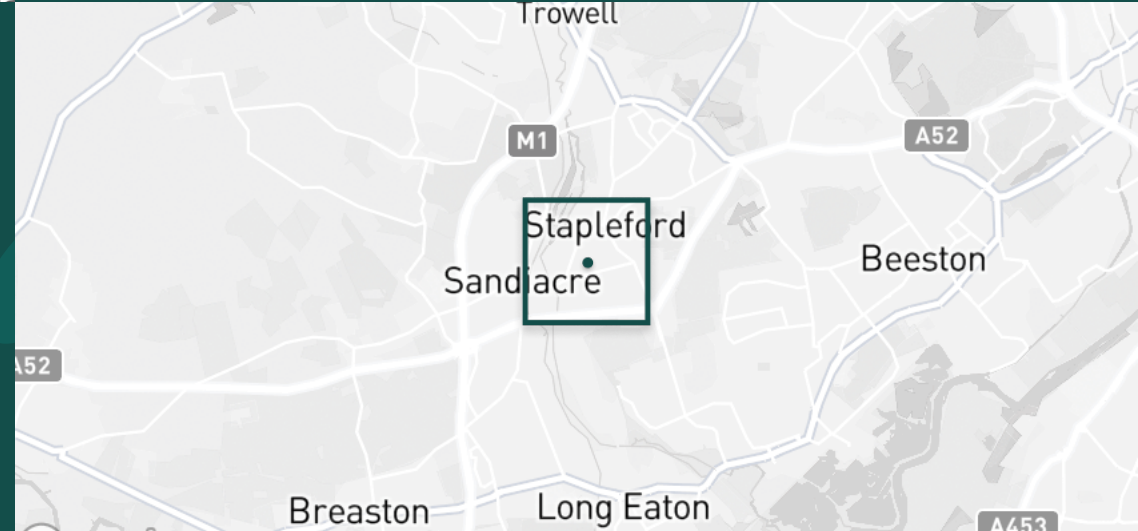
Handkerchief Day Nursery	8.4 mi
Moors Farm Day Nursery	11.2 mi
The Honey Bee Day Nursery	12.8 mi
Robert Bakewell Playgroup	12.9 mi
Babblebrooke Day Nursery	13.7 mi

PRIMARY SCHOOLS

Kegworth Primary School	8.6 mi
Hemington PS	8.9 mi
St Edwards CE PS	9.4 mi
Orchard Community Sch	9.7 mi
Sutton Bonington PS	10.4 mi

HIGH SCHOOLS

Limehurst Academy	13.8 mi
Loughborough High Sch	14.8 mi
Hind Leys Community College	14.8 mi
East Leak Academy	14.8 mi
Shepshed High Sch	14.9 mi



- ✓ Recently Refurbished
- ✓ New Kitchen
- ✓ Three Bedrooms
- ✓ New Bathroom
- ✓ Available Now
- ✓ New Carpets





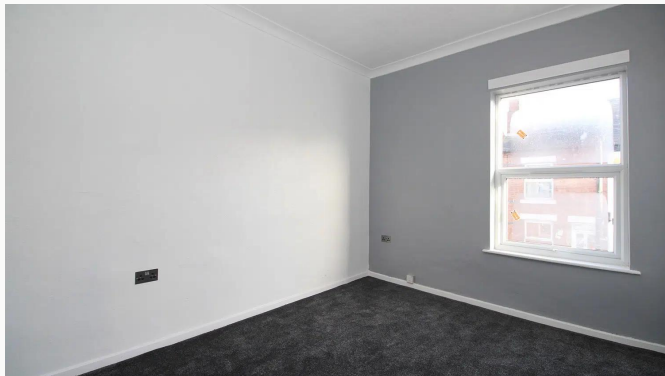
Kitchen



Kitchen



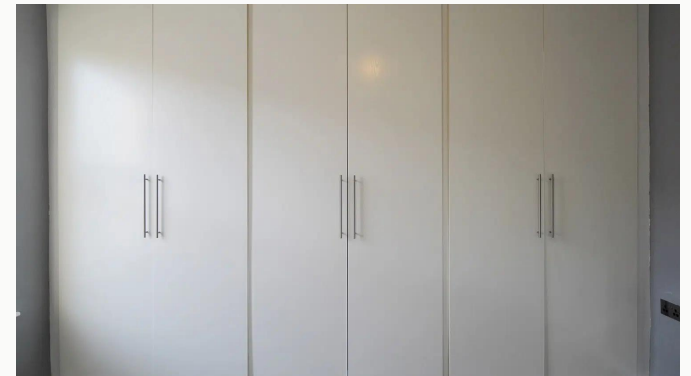
Master Bedroom



Master Bedroom



Master Bedroom



Wardrobes



Wardrobes



Bedroom Two



Bedroom Two



Bedroom Three



Bedroom Three



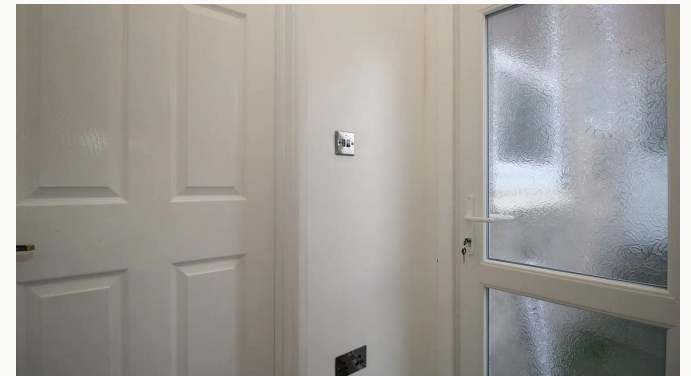
Landing



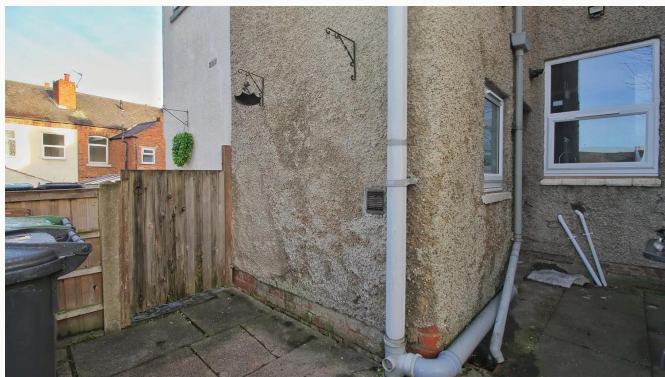
Bathroom



Bathroom



Rear Porch



Garden



Garden



Aerial View

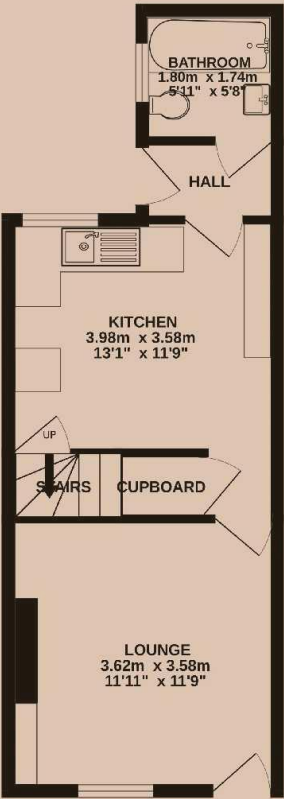


Antill Street

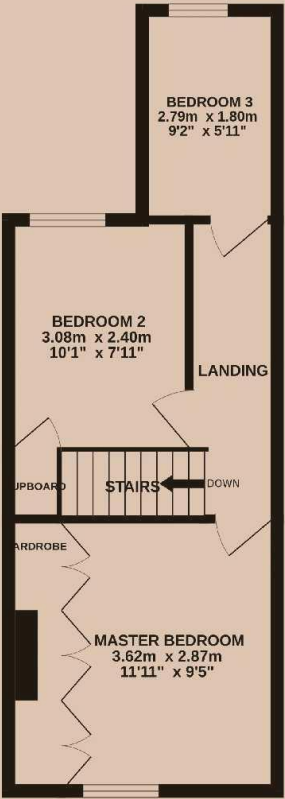
Available From 15/12/2025	Comes Unfurnished	Bedrooms 3	Receptions 1	Bathrooms 1	Parking On Street	Postcode NG9 7FT
Rent £1,150 pcm	Deposit £1,320	EPC 64 D	Council Tax Band A	ID #18458	Updated 15/12/2025	



GROUND FLOOR
31.8 sq.m. (342 sq.ft.) approx.



1ST FLOOR
31.8 sq.m. (343 sq.ft.) approx.



Have a property like this? Let's work together.

Design and marketing are at the heart of our approach. With most people now looking for property online, we can get our clients' properties in front of as many people as the most prominent national agents. Where we differ is in the quality of our work. We create stunning digital particulars that highlight the individual attributes of every property we market, with videos and floor plans as standard.



OUR OFFICE
7 Biggin Street
Loughborough, LE11 1UA

CONTACT US
01509 320 320
let@huntleys.net

