

A photograph of a bedroom. On the left, there is a large window with white curtains and a dark patterned valance. Below the window is a dark wooden desk with a black chair. In the center-right, there is a wooden bed frame with a white mattress. To the right of the bed is a small black bedside table. The room has light-colored walls, a white ceiling with a single light fixture, and light wood flooring. The text 'Wordsworth Road' is written in a large, white, italicized serif font across the middle of the image, with 'Loughborough' written below it in a smaller, white, sans-serif font.

Wordsworth Road
Loughborough

1 Bed Room In A Shared House • LE11 4LQ • £600 pcm • £690 Deposit



Wordsworth Road, Loughborough

ONE of TWO fully furnished room in a shared house FOR STUDENTS. This room is presented in fantastic condition with bills included. The communal rooms have recently been renovated and are now ready for occupation. All photographs are of actual property. Communal areas shared between two occupants on the first floor of this property.

Lounge

A neutral, communal living room including a table, chairs, sofa, and television.

Kitchen

A communal modern L-shaped kitchen, including a fridge/freezer, oven, and hob.

The Bedroom

A sizeable double bedroom, including furniture pictured and built-in storage.

Shower Room

A modern washroom, including a walk-in shower, sink, toilet, and washing machine.

Parking

Driveway parking with further parking available on nearby roads.

Heating

Electric Heating Throughout

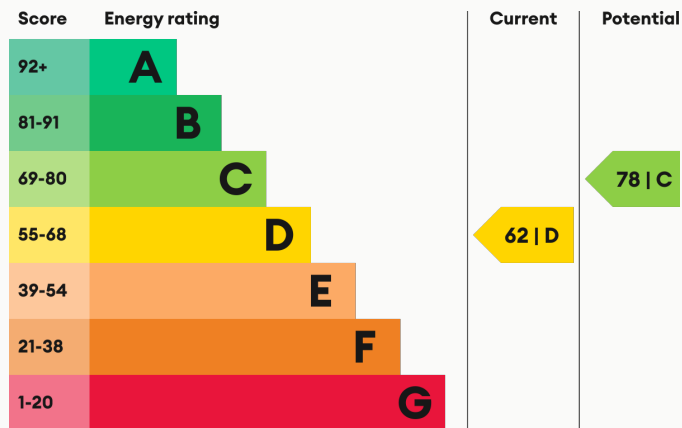
Utilities

Bills Included.

Glazing

Modern, good quality, uPVC double glazing.

Energy Performance



We aim to make our particulars both accurate and reliable. However they are not guaranteed; nor do they form part of an offer or contract. If you require clarification on any points then please contact us, especially if you are traveling some distance to view. All measurements are to widest point.



Bedroom



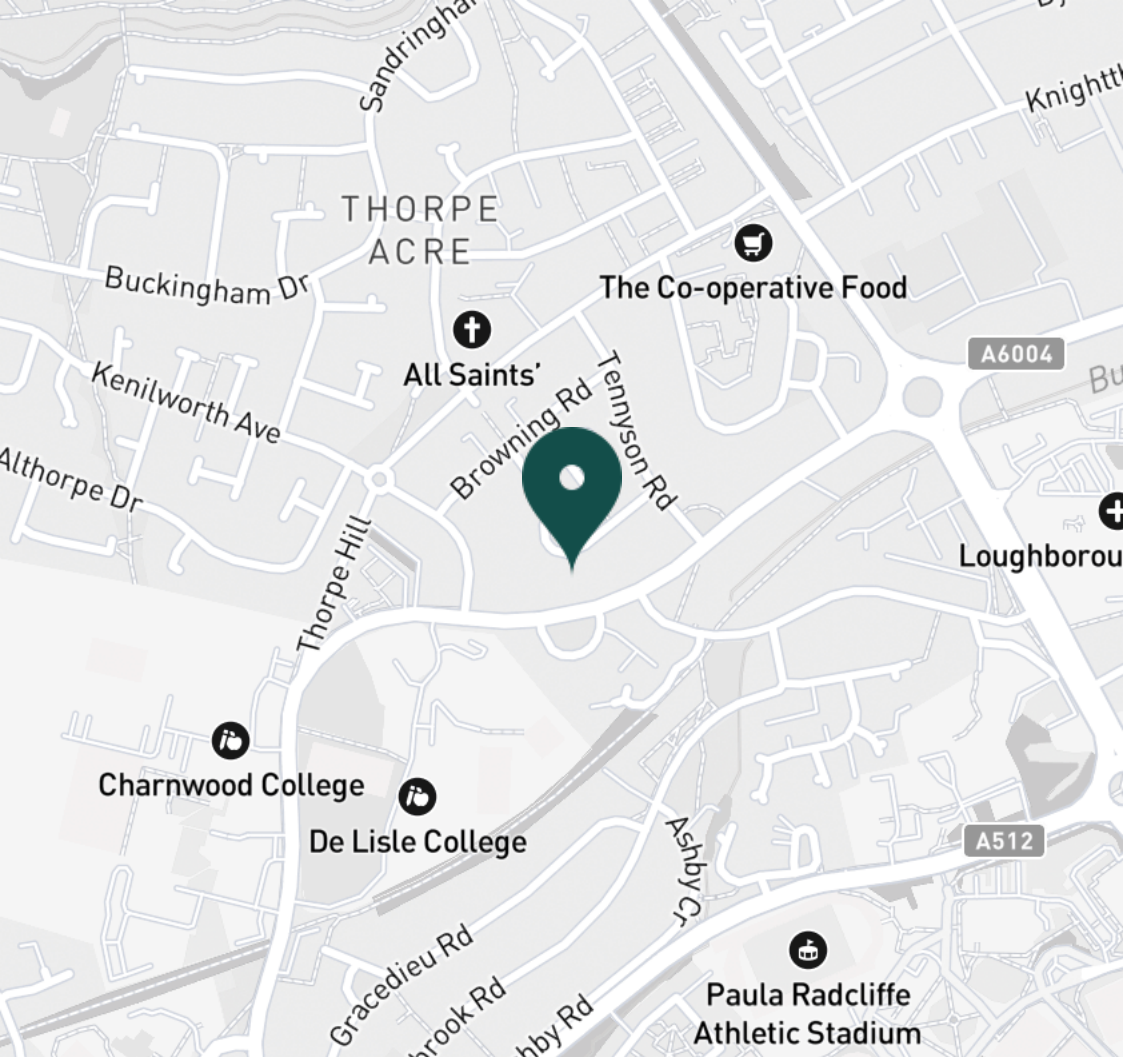
Bedroom



Kitchen



Kitchen



SUPERMARKETS

Co-op Food Knightthorpe Rd	0.3 mi
Morrisons Loughborough	0.8 mi
Lidl Loughborough	1.0 mi
Aldi Loughborough	1.2 mi
Tesco Superstore Loughborough	1.3 mi

GYMS

Loughborough University Pool	0.9 mi
Loughborough Sport	1.0 mi
Radmoor Centre	1.0 mi
Anytime Fitness Loughborough	1.2 mi
PureGym Loughborough	1.4 mi

TRAIN STATIONS

Loughborough	2.0 mi
Barrow upon Soar	4.8 mi
Sileby	6.7 mi
East Midlands Parkway	9.8 mi
Syston	11.0 mi

NURSERY SCHOOLS

Little House Day Nursery	0.4 mi
Charnwood College Playgroup	0.6 mi
Kingscliffe Day Nursery	1.0 mi
Loughborough Campus Nursery	1.0 mi
Robert Bakewell Playgroup	1.0 mi

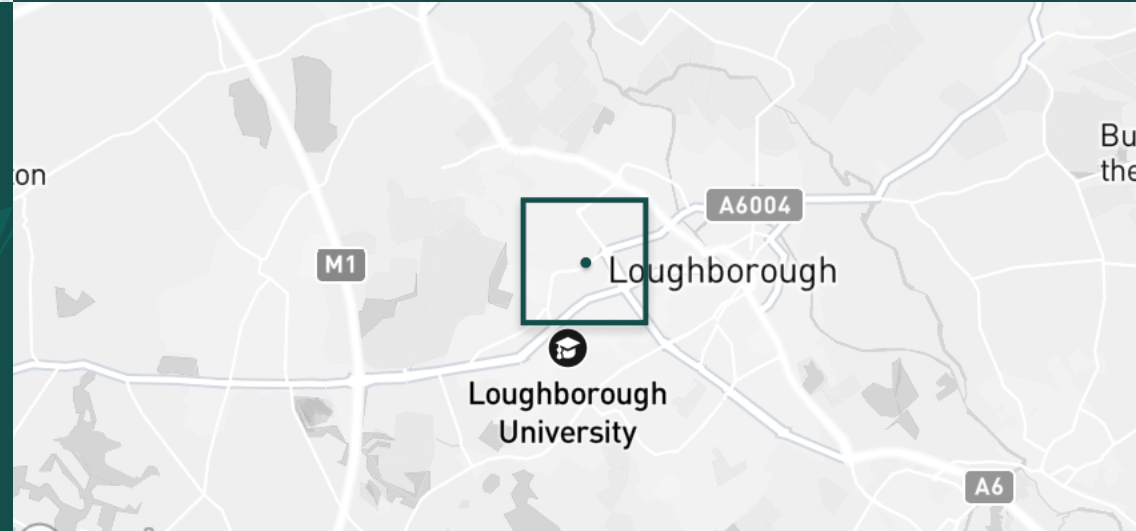
PRIMARY SCHOOLS

Thorpe Acre Junior Sch	0.3 mi
Ashmount Sch	0.6 mi
Booth Wood PS	0.7 mi
Robert Bakewell PS	1.1 mi
St Marys Catholic PS	1.1 mi

HIGH SCHOOLS

The Garendon High Sch	0.4 mi
De Lisle Catholic Science C	0.4 mi
Charnwood College	0.6 mi
Ashmount Sch	0.6 mi
Loughborough College	1.0 mi

Discover
Loughborough

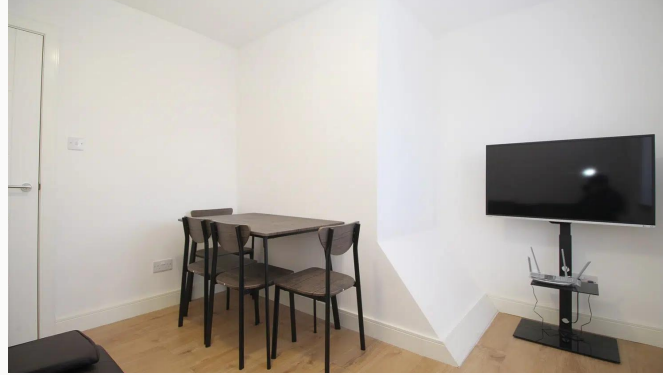


- ✓ Room in a Shared House
- ✓ Available August 2026
- ✓ Bills Included
- ✓ FOR STUDENTS
- ✓ Modern Kitchen
- ✓ Furnished Room





Lounge



Lounge



Lounge



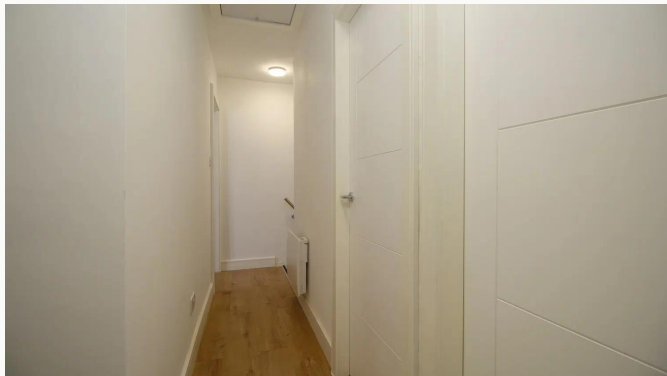
Shower Room



Shower Room



Shower Room



Hallway



Wordsworth



Entrance

Available
From 01/08/2026

Comes
Furnished

Bedrooms
1

Receptions
1

Bathrooms
1

Parking
Driveway

Postcode
LE11 4LQ

Rent
£600 pcm

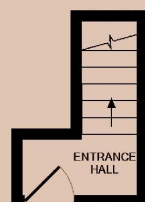
Deposit
£690

EPC
62 | D

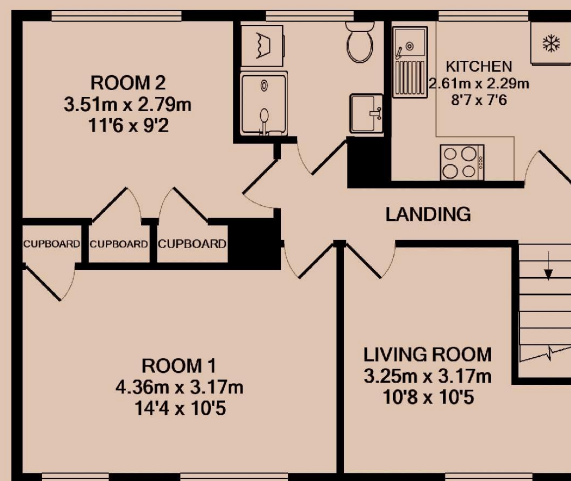
Council Tax Band
B

ID
#17725

Updated
08/05/2026



ENTRANCE FLOOR



GROUND FLOOR

Have a property like this? Let's work together.

Design and marketing are at the heart of our approach. With most people now looking for property online, we can get our clients' properties in front of as many people as the most prominent national agents. Where we differ is in the quality of our work. We create stunning digital particulars that highlight the individual attributes of every property we market, with videos and floor plans as standard.



OUR OFFICE
7 Biggin Street
Loughborough, LE11 1UA

CONTACT US
01509 320 320
let@huntleys.net

